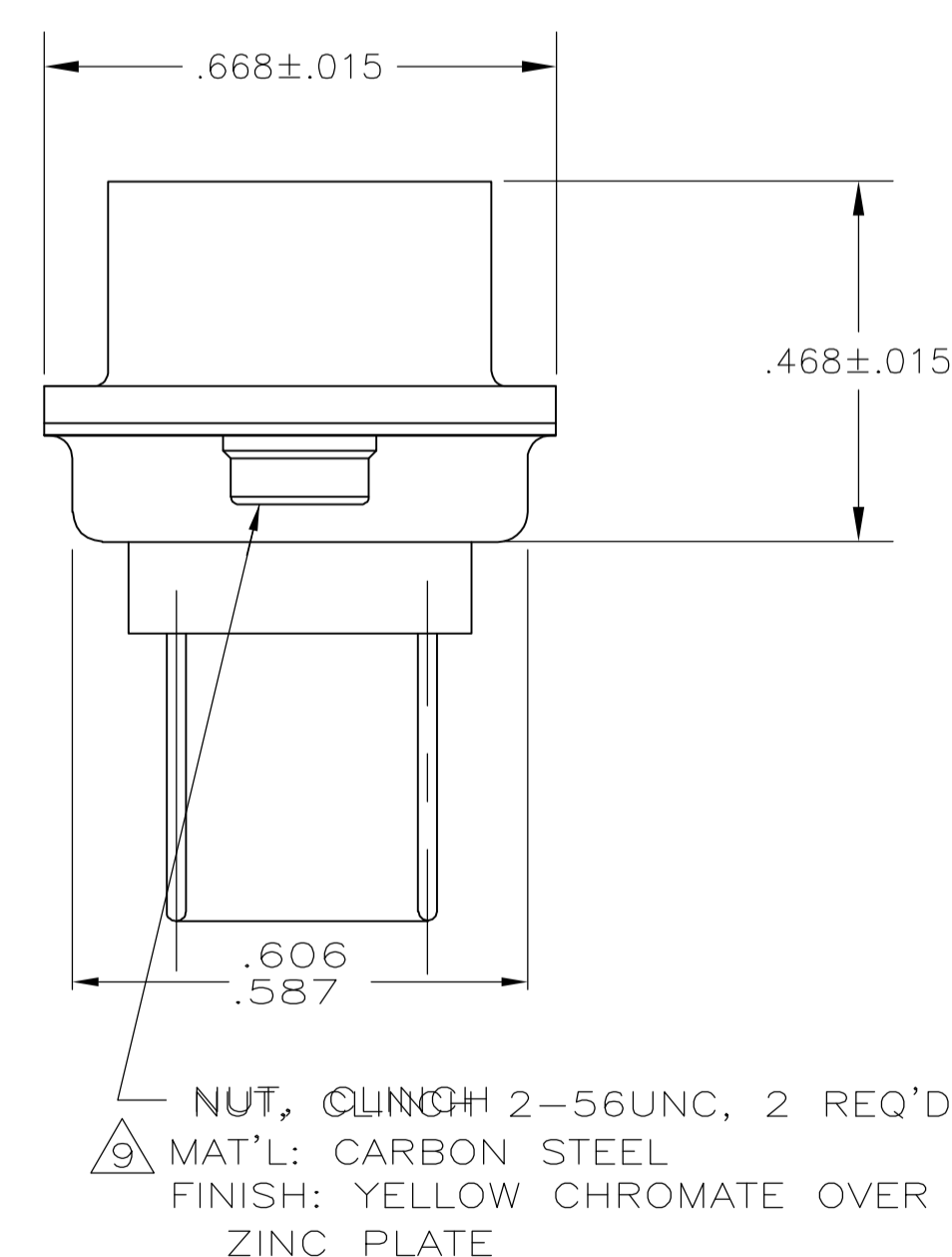
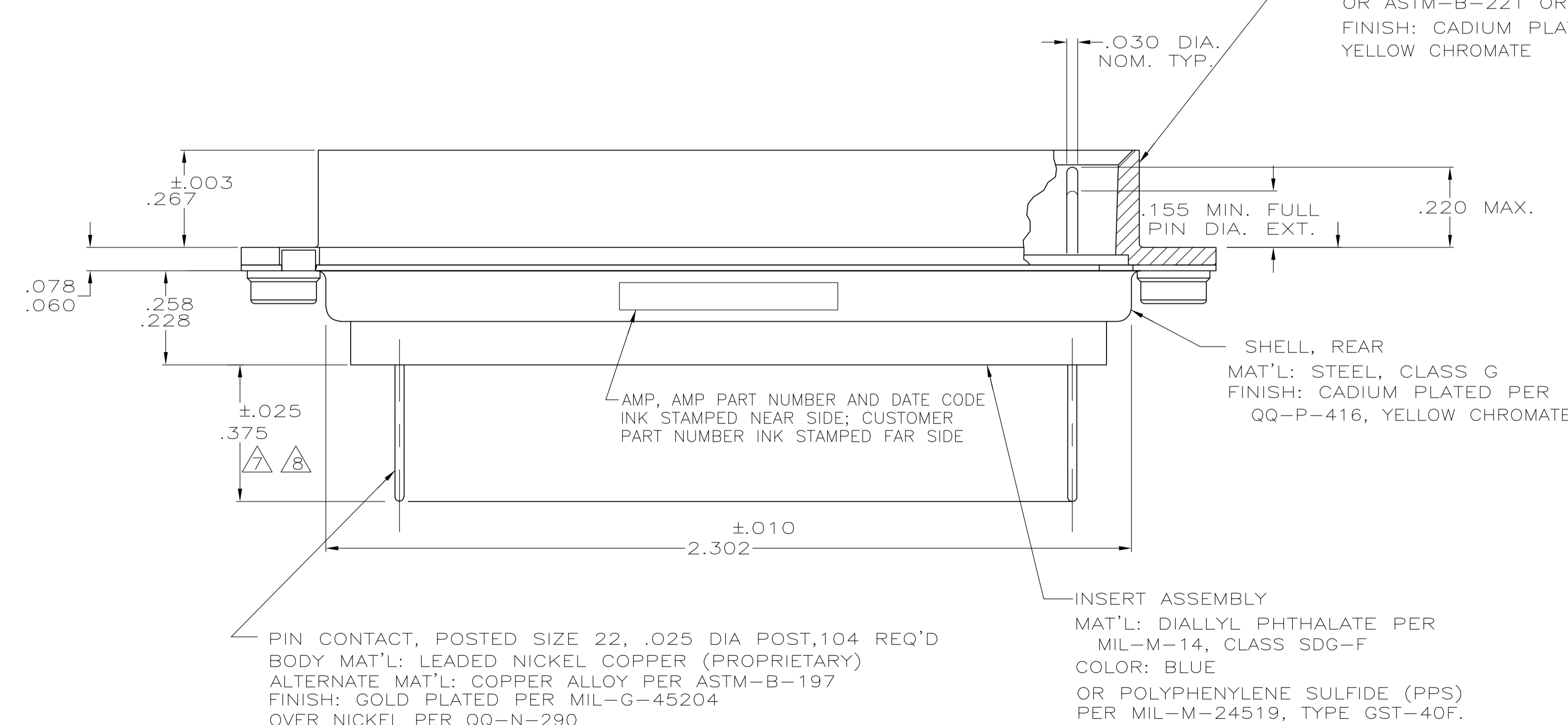
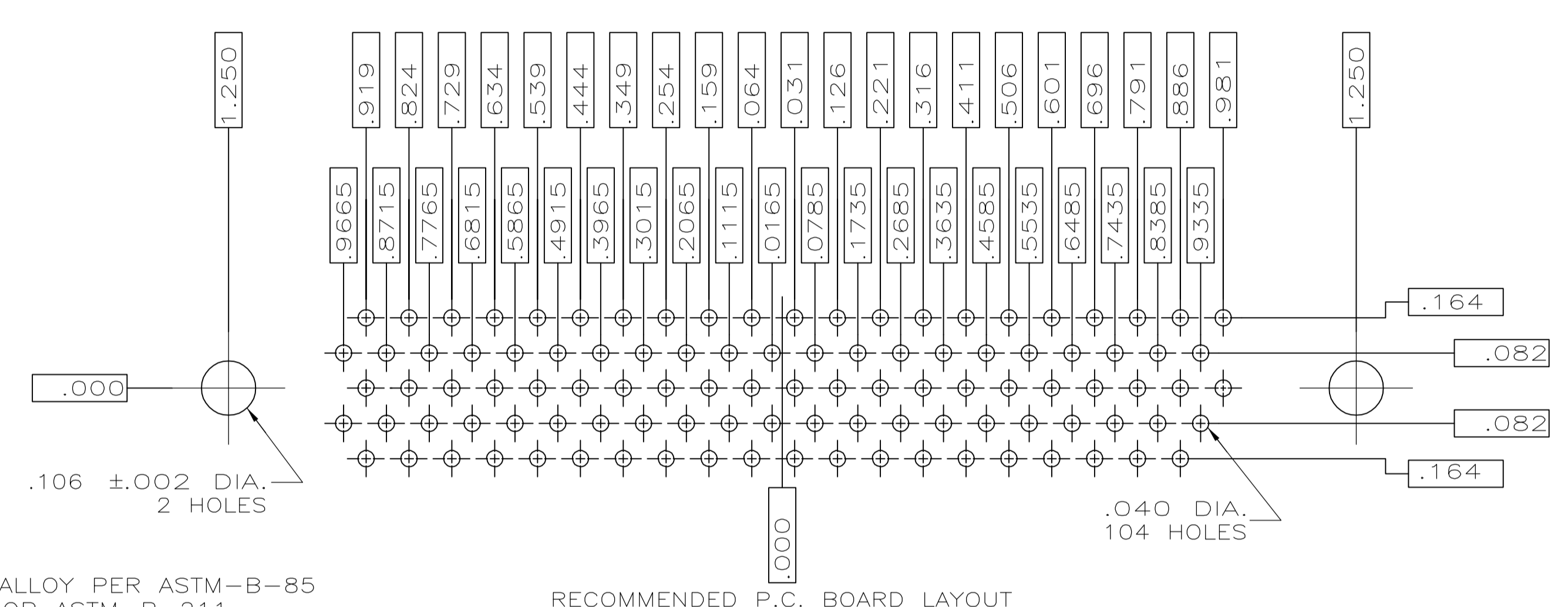
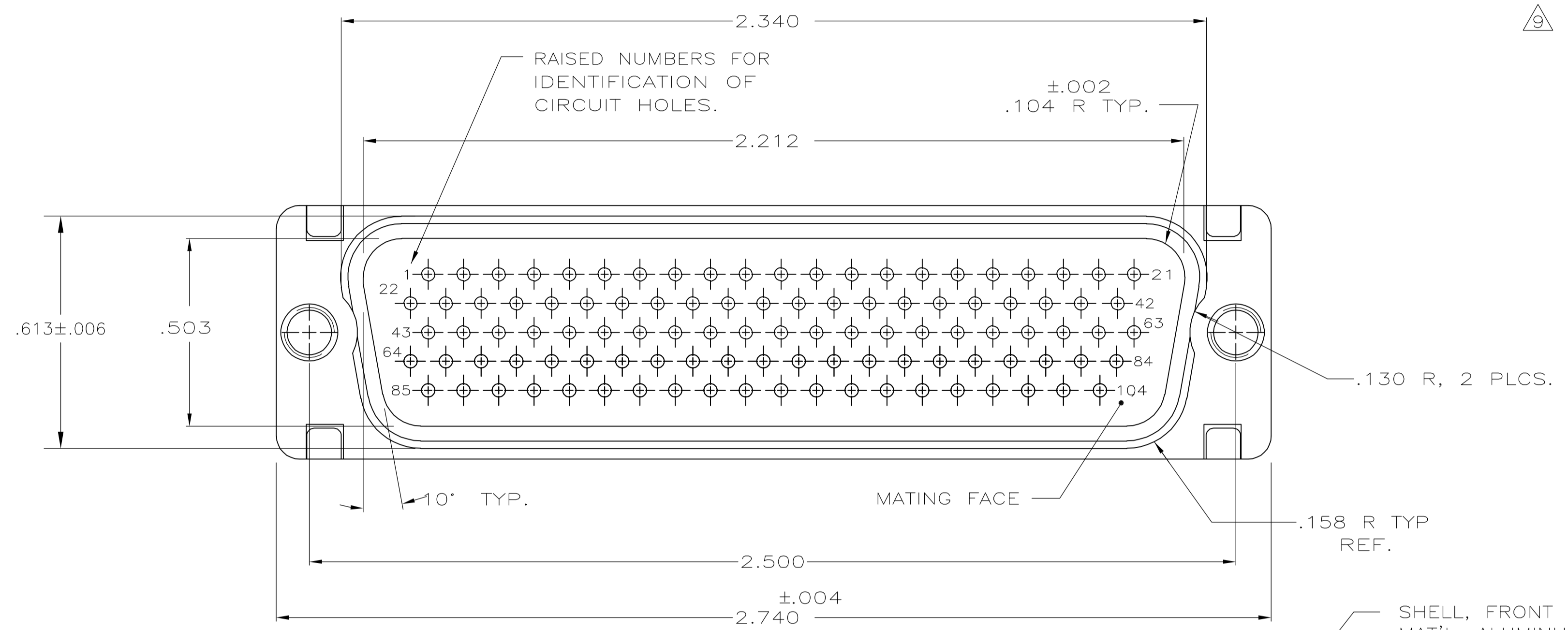


1. THIS PLUG WILL MATE WITH ANY 104 POSN., SIZE 6 RECEPTACLE IN AMPLIMITE SERIES.
 2. SST RETENTION CLIPS ARE INCLUDED IN INSERTS.
 3. THIS PLUG IS DESIGNED TO CONFORM TO THE LATEST ISSUE OF MIL-C-24308.
 4. REPLACEMENT CONTACT P/N 1-207683-2
 5. TO INSTALL OR REMOVE CONTACTS USE INSERTION/EXTRACTION TOOL P/N 91067-1 OR MIL NUMBER M81969/1-04.
- ⚠ AS SHOWN EXCEPT WITH .120 DIAMETER MOUNTING HOLES IN PLACE OF CLINCH NUTS
- ⚠ SOLDER DIP PER MIL-STD-2000 COMPOSITION Sn63 CONFORMING TO QQ-S-571. COVERAGE SHALL BE COMPLETE TO A DISTANCE OF .030 MAX. FROM REAR INSERT.
- ⚠ DIMENSION APPLIES PRIOR TO SOLDER DIPPING. ALLOW ADDITIONAL .030 POST PROJECTION AFTER SOLDER DIPPING.
- ⚠ CLINCH NUT PROVIDED ON 213045-1 ONLY.



PIN CONTACT, POSTED SIZE 22, .025 DIA POST, 104 REQ'D
 BODY MAT'L: LEADED NICKEL COPPER (PROPRIETARY)
 ALTERNATE MAT'L: COPPER ALLOY PER ASTM-B-197
 FINISH: GOLD PLATED PER MIL-G-45204
 OVER NICKEL PER QQ-N-290

INSERT ASSEMBLY
 MAT'L: DIALYL PHTHALATE PER MIL-M-14, CLASS SDG-F
 COLOR: BLUE
 OR POLYPHENYLENE SULFIDE (PPS) PER MIL-M-24519, TYPE GST-40F.

SHELL, REAR
 MAT'L: STEEL, CLASS G
 FINISH: CADIUM PLATED PER QQ-P-416, YELLOW CHROMATE

SHELL, FRONT
 MAT'L: ALUMINUM ALLOY PER ASTM-B-85 OR ASTM-B-221 OR ASTM-B-211
 FINISH: CADIUM PLATED PER QQ-P-416, YELLOW CHROMATE

AS SHOWN	213045-2
DESCRIPTION	PART NO

THIS DRAWING IS A CONTROLLED DOCUMENT.		DW	J.A. Baker	05-08-95	Tyco Electronics Corporation Harrisburg, PA 17105-3608
DIMENSIONS: INCHES		CHK	F. KINSEY	05-08-95	
TOLERANCES UNLESS OTHERWISE SPECIFIED:		APVD	F. KINSEY	05-08-95	NAME F. KINSEY
0 PLC ± -		PRODUCT SPEC	F. KINSEY		
1 PLC ± -		APPLICATION SPEC			SIZE A1
2 PLC ± -		RESTRICTED TO			
3 PLC ± .005		WEIGHT			SCALE 1:1
4 PLC ± -		CUSTOMER DRAWING			
ANGLES ± 0° 30'		DATE	00779	213045	SHEET 1 of 1
MATERIAL		REV			