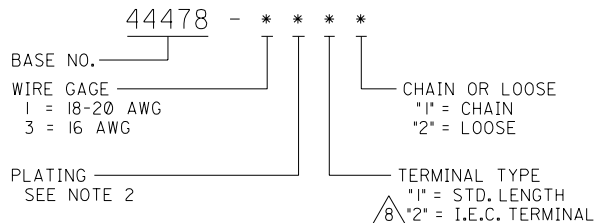


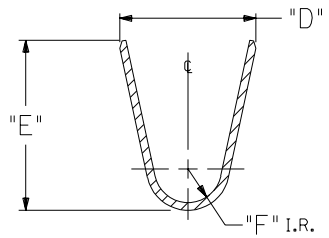
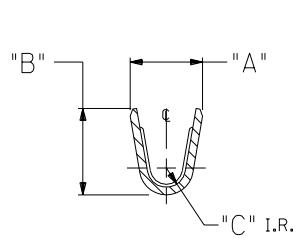
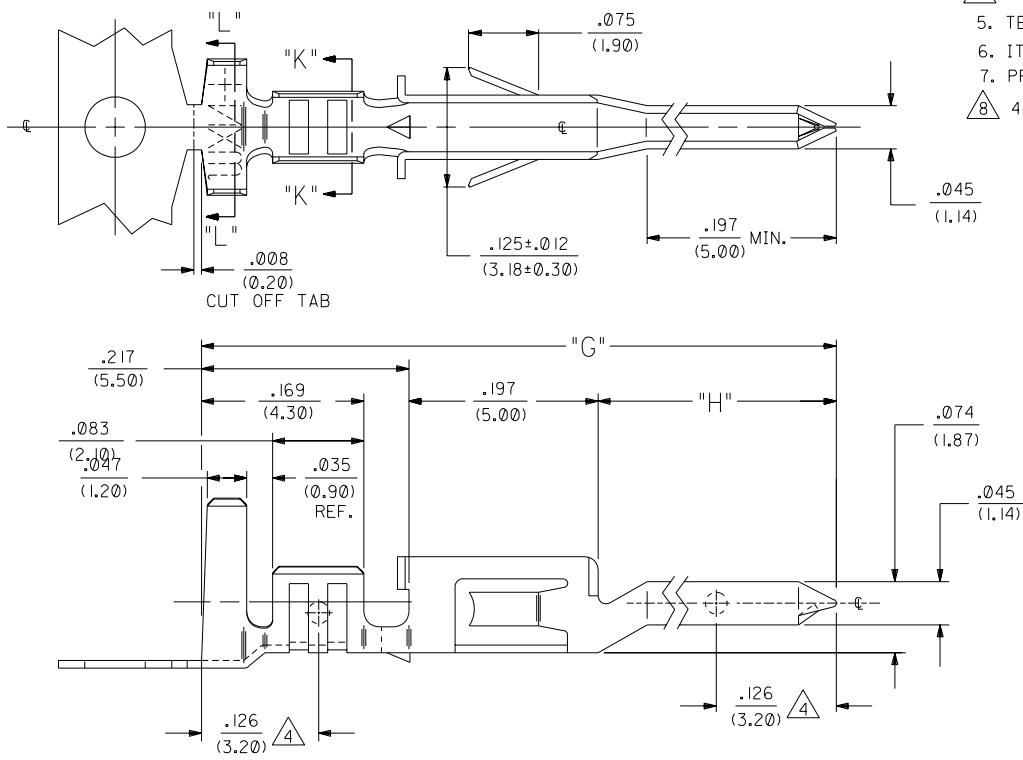
ITEM NO.	FORM	WIRE GAGE	RANGE OF INSULATION DIA.	QUANTITY PER REEL (FORMED)	DIM. "A"	DIM. "B"	DIM. "C"	DIM. "D"	DIM. "E"	DIM. "F"	DIM. "G"	DIM. "H"
44478-1111	CHAIN	18-20 GA.	.051-.122 (1.30-3.10)	4,000	.075±.012 (1.90±.30)	.091±.016 (2.30±.40)	.020 (.50)	.142±.012 (3.60±.30)	.177±.016 (4.50±.40)	.035 (.90)	.661±.016 (16.80±.40)	.248 (6.30)
44478-1112	LOOSE				.091±.012 (2.30±.30)	.106±.016 (2.70±.40)	.024 (.60)	.142±.012 (3.60±.30)	.177±.016 (4.50±.40)	.035 (.90)		
44478-3111	CHAIN	16 GA.	.122 (3.10) MAX.	4,000	.091±.012 (2.30±.30)	.106±.016 (2.70±.40)	.024 (.60)	.142±.012 (3.60±.30)	.177±.016 (4.50±.40)	.035 (.90)		
44478-3112	LOOSE				.091±.012 (2.30±.30)	.106±.016 (2.70±.40)	.024 (.60)	.142±.012 (3.60±.30)	.177±.016 (4.50±.40)	.035 (.90)		
44478-1211	CHAIN	18-20 GA.	.051-.122 (1.30-3.10)	4,000	.075±.012 (1.90±.30)	.091±.016 (2.30±.40)	.020 (.50)	.142±.012 (3.60±.30)	.177±.016 (4.50±.40)	.035 (.90)		
44478-1212	LOOSE				.091±.012 (2.30±.30)	.106±.016 (2.70±.40)	.024 (.60)	.142±.012 (3.60±.30)	.177±.016 (4.50±.40)	.035 (.90)		
44478-3211	CHAIN	16 GA.	.122 (3.10) MAX.	4,000	.091±.012 (2.30±.30)	.106±.016 (2.70±.40)	.024 (.60)	.142±.012 (3.60±.30)	.177±.016 (4.50±.40)	.035 (.90)		
44478-3212	LOOSE				.091±.012 (2.30±.30)	.106±.016 (2.70±.40)	.024 (.60)	.142±.012 (3.60±.30)	.177±.016 (4.50±.40)	.035 (.90)		
44478-1121	CHAIN	18-20 GA.	.051-.122 (1.30-3.10)	4,000	.075±.012 (1.90±.30)	.091±.016 (2.30±.40)	.020 (.50)	.142±.012 (3.60±.30)	.177±.016 (4.50±.40)	.035 (.90)	.917±.016 (23.30±.40)	.504 (12.80)
44478-1122	LOOSE				.091±.012 (2.30±.30)	.106±.016 (2.70±.40)	.024 (.60)	.142±.012 (3.60±.30)	.177±.016 (4.50±.40)	.035 (.90)		
44478-3121	CHAIN	16 GA.	.122 (3.10) MAX.	4,000	.091±.012 (2.30±.30)	.106±.016 (2.70±.40)	.024 (.60)	.142±.012 (3.60±.30)	.177±.016 (4.50±.40)	.035 (.90)		
44478-3122	LOOSE				.091±.012 (2.30±.30)	.106±.016 (2.70±.40)	.024 (.60)	.142±.012 (3.60±.30)	.177±.016 (4.50±.40)	.035 (.90)		
44478-1221	CHAIN	18-20 GA.	.051-.122 (1.30-3.10)	4,000	.075±.012 (1.90±.30)	.091±.016 (2.30±.40)	.020 (.50)	.142±.012 (3.60±.30)	.177±.016 (4.50±.40)	.035 (.90)		
44478-1222	LOOSE				.091±.012 (2.30±.30)	.106±.016 (2.70±.40)	.024 (.60)	.142±.012 (3.60±.30)	.177±.016 (4.50±.40)	.035 (.90)		
44478-3221	CHAIN	16 GA.	.122 (3.10) MAX.	4,000	.091±.012 (2.30±.30)	.106±.016 (2.70±.40)	.024 (.60)	.142±.012 (3.60±.30)	.177±.016 (4.50±.40)	.035 (.90)		
44478-3222	LOOSE				.091±.012 (2.30±.30)	.106±.016 (2.70±.40)	.024 (.60)	.142±.012 (3.60±.30)	.177±.016 (4.50±.40)	.035 (.90)		

LEGEND:



NOTES:

- MATERIAL: ALLOY C197, .008/(0.20) THICK.
- *1= PLATING: POSTPLATE .000100/(.00254) MIN. BRIGHT TIN OVER .000030/(.00076) MIN. NICKEL OVERALL.
*2= PLATING: POSTPLATE .000030/(.000076) MIN. SELECT GOLD AND .000100/(0.00254) MIN. MATTE TIN OVER .000050/(.00127) MIN. NICKEL OVERALL.
- THE PRIMARY SHIPPING CARTON WILL BE LABELED "COMPLIANT TO RoHS DIRECTIVE 2002/95/EC AND ELV ANNEX II OF DIRECTIVE 2000/53/EC." CARTONS WITHOUT THIS LABEL MAY CONTAIN PRODUCT WITH TIN-LEAD PLATING.
- PART DESIGNED IN METRIC.
- MEASURING POINT FOR PLATING THICKNESS.
- TERMINAL IS FOR USE WITH MOLEX PLUG HOUSINGS 5559, 30068, AND 42475.
- ITEM NUMBERS PRECEDED BY AN "X" IN THE CHART ARE NOT AVAILABLE.
- PRODUCT SPECIFICATION AND PROCESSING PARAMETERS: SEE PS-44476-001.
- 44478-**2* TERMINALS ARE FOR 5.0mm MIN. CLEARANCE I.E.C. 950 SPEC.



F	REMOVED TIN LEAD ECN *UCP2004-1767 04/03/15 MSC
E	REVISED LOCK TABS UCR2002-0222 01/09/06 BANDURA
D	REVISED PER UCR1999-0880 99/06/21 MBANDURA
CI	REVISED UCR1999-0181 98/09/17 L.E.M.
C	ADD I.E.C. VERSION ECN UCR1999-0107 POLGAR 98-08-10
B	REVISION ECN U70887 WANG 97/2/76
A1	REV. 24AWG. TO 20 ECN U60135 95-08-03 A.GUZIJK
A	FINAL RELEASE ECN U51222 95-06-06 A.GUZIJK
2	REMOVE 14 GA. WIRE ECN U51668 95-05-19 A.GUZIJK
1	** REL. PER ECN U40480 GEP 7-25-94

MFG, SH, REV, LTR, REVISIONS

REVISION ONLY ON CAD SYSTEM

TITLE: TERMINAL, MALE, CRIMP, MINI-FIT JR, H.C.S.SERIES

MOLEX INCORPORATED SHEET NO. DATE
LITSE,ILL. 60532 U.S.A. 1 OF 1 7/25/94

PART NO. SD-44478-****
DRAWG. NO.

SEE CHART.

DRW'G. BY: GEP CHK'D. BY: RJF
APP'D. BY: RJF SCALE: 10:1

THIS DRAWING CONTAINS INFORMATION THAT IS PROPRIETARY TO MOLEX INC. AND SHOULD NOT BE USED WITHOUT WRITTEN PERMISSION.