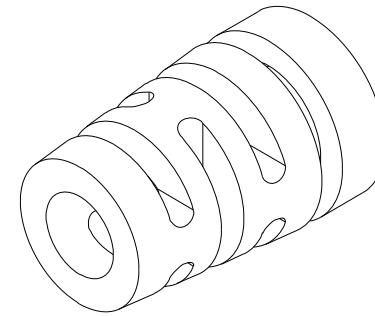
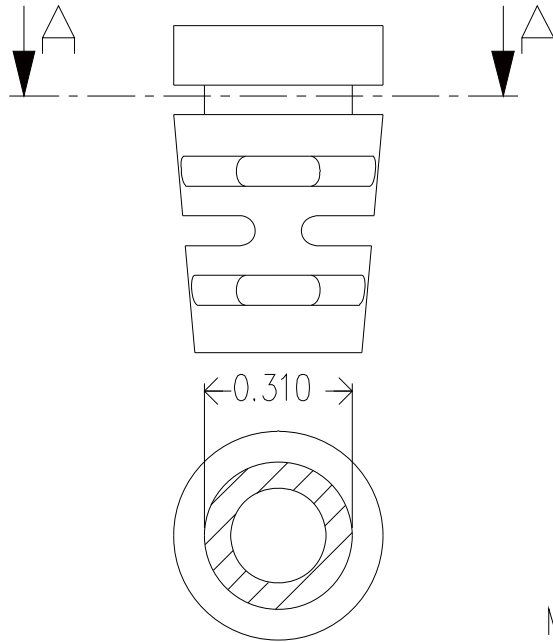
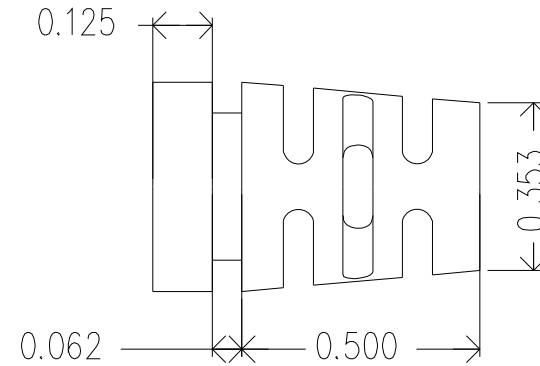
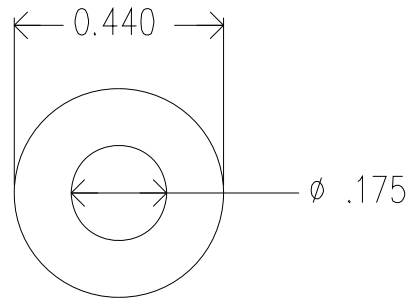


REVISIONS				
ZONE	REV.	DESCRIPTION	DATE	APPROVED



Mold Material, ISC P/N: 5000214, M1472, PVC, BLK, RoHS

Dimensions are subject to change.  
PROPRIETARY AND CONFIDENTIAL  
THE INFORMATION CONTAINED IN THIS DRAWING IS THE SOLE PROPERTY OF ISC ENGINEERING. ANY REPRODUCTION IN PART OR AS A WHOLE WITHOUT THE WRITTEN PERMISSION OF ISC ENGINEERING IS PROHIBITED.

DIMENSIONS ARE IN INCHES		NAME	DATE
TOLERANCES:		DRAWN	R FIERRO 03/10/04
FRACTIONAL $\pm$		CHECKED	
ANGULAR: MACH $\pm$		ENG APPR.	
BEND $\pm$		MFG APPR.	
TWO PLACE DECIMAL $\pm$		Q.A.	
THREE PLACE DECIMAL $\pm$		COMMENTS:	
MATERIAL	--		
FINISH	--		
NEXT ASSY	USED ON		
APPLICATION		DO NOT SCALE DRAWING	

ISC Engineering 4351 Schaefer Ave, Chino, CA 91710 Ph: 909-596-3315 Fax: 909-596-3335 www.iscengineering.com www.overmoldtooling.com		
Standard Strain Relief 1461080-175-B-310-440-0		
SIZE A	DWG. NO. 1467099	REV.
SCALE: 5:1	WEIGHT:	SHEET 1 OF 1

