

## BOX2-P14

Handheld plastic enclosure for up to three Size1 and Size2 PCBs



### AVAILABLE STYLES:

GREY

PART#: BOX2-P14-GY

BLACK

PART#: BOX2-P14-BK

TRANSPARENT RED

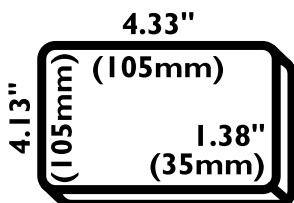
PART#: BOX2-P14-RT

TRANSPARENT BLUE

PART#: BOX2-P14-BT

### BOX2-P14 Features:

- Electronic instrument enclosure fits a combination of up to three Size1 & Size2 PCBs.
- ABS plastic construction with removable end panels.
- Recessed top for adhesive overlay or membrane keypad.
- Smooth top for clear display readability with transparent enclosures.
- Textured finish hides fingerprints.
- Self-tapping screws provided for securing enclosure.



# SIZE 2



## BOX2-P14 Details:

The BOX2-P14 is a handheld electronic instrument enclosure constructed from ABS plastic. A combination of up to three Size1 PCBs (80 x 50mm / 3.15 x 1.97") and Size2 PCBs (100 x 80mm / 3.94 x 3.15") can be installed with the built-in PCB standoffs, with configuration options shown below.

The plastic enclosure is easy to drill and features a textured finish that hides fingerprints and provides additional grip. Two removable end panels can be drilled for connectors.

The enclosure's top panel features a recessed top for an adhesive overlay or membrane keypad. The recessed top on the transparent red and blue enclosure have a clear smooth finish designed for easy viewing of displays.



Lap joint construction provides an IP54 protection rating against dust accumulation and splashing water. Self-tapping screws provided to close the enclosure. Black and transparent blue enclosures come with black screws while grey and transparent red come with nickel finish screws. PCB standoffs use standard 4-40 0.25" machine screws (not provided).

## PCB Configuration Options:



**Option #1 - Two PCBs**  
Two Size2 PCBs



**Option #2 - Three PCBs**  
Two Size1 PCBs +  
Single Size2 PCB

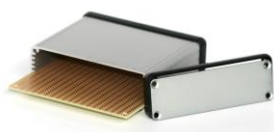


**Option #3 - Two PCBs**  
Single Size1 PCB +  
Single Size2 PCB

## Related Products:



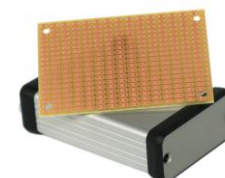
BOX1-P14



KBOX2-AL-PR2H



KIT-1553B



KBOX1-AC-PR2H

## Color Options:



**Black**  
(BOX2-P14-BK)



**Grey**  
(BOX2-P14-GY)

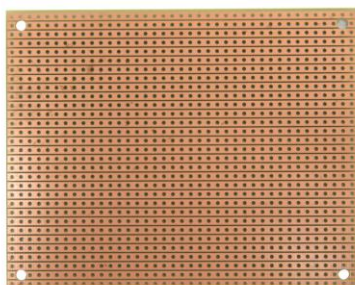


**Transparent Red**  
(BOX2-P14-RT)

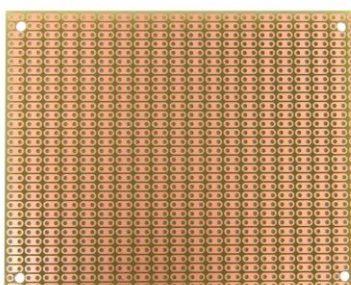


**Transparent Blue**  
(BOX2-P14-BT)

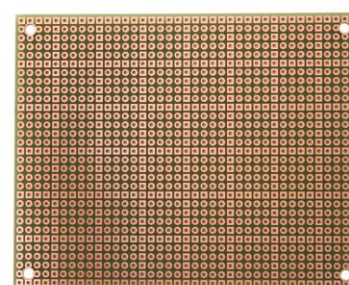
## Compatible BusBoard PCBs:



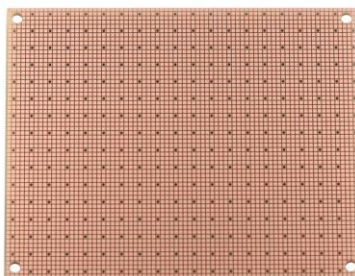
**StripBoard**  
*ST1*  
*ST2*



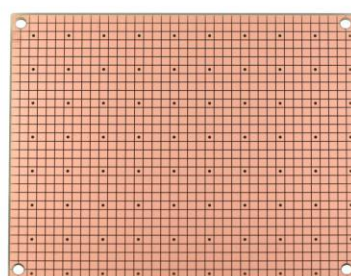
**2-Hole ProtoBoard**  
*PR2H1*  
*PR2H2*



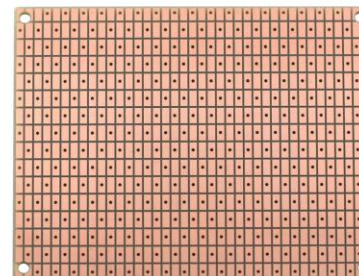
**PadBoard**  
*PAD1*  
*PAD2*



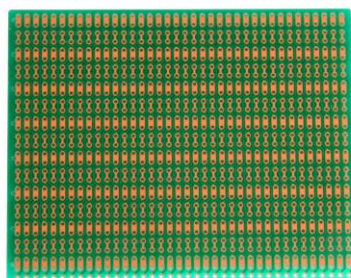
**50mil SMTpads**  
*SP1-50x50-G*  
*SP2-50x50-G*  
*SP2-50x50-2S*



**100mil SMTpads**  
*SP1-100x100-G*  
*SP2-100x100-G*



**200mil SMTpads**  
*SP1-200x100-G*  
*SP2-200x100-G*



**BusBoard**  
*BB2*

## BOX2-P14 Details:

