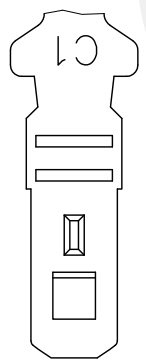


Wire Range	Insulation Diameter	Reel Q'ty
AWG #24~#30	1.45 (.057) MAX.	10,000 PCS.

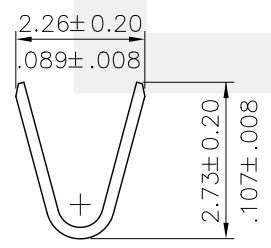
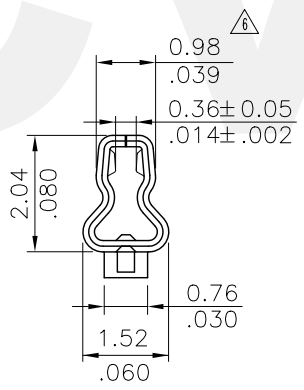
Ordering Code:

CI01 T01 1 P E 0
 ① ② ③ ④ ⑤ ⑥

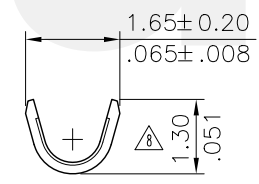
- ① Series No.
- ② Type: T01= AWG #24~ #30
- ③ Plating: 1= 2.03 μ m(80 μ ") Min. Tin over 0.76 μ m(30 μ ") Nickel
- ④ Material: P= Phosphor Bronze
- ⑤ Plating method: E= Pre-tinned
- ⑥ Option: 0= Standard



BACK VIEW



SEC.:A-A



SEC.:B-B

RoHS Compliant

SYM	NAME	DATE	REVISIONS	APPROVED BY:	DATE	UNIT:	TITLE:	MATERIAL:	FINISH:	DRAWING NO.	PART NO.	SCALE	SHEET	OF	1
⑨	Erin	5/7-12'	ECR12021-0/ECN12074-0			mm / inch	2.00MM(.079")			CI0104SQ	CI01T011PEO	6 / 1	1	1	
⑧	Hank	5/10-11'	ECR11032-0	DRAWN BY:	Erin	TOLERANCE UNLESS OTHERWISE SPECIFIED	CRIMP TERMINAL								
⑦	Sun	8/14-09'	ECR09090-1/ECN09414	ENGINEER:	Eisley	.X ± 0.20/.008									
⑥	Sandy	1/20-09'	ECN09011	CHECKED BY:	Eisley	.XX ± 0.10/.004									
				APPROVED BY:	David	.XXX ± 0.05/.002									

CVILUX CORP
 2012.05.28
 ISSUED

瀚荃股份有限公司
 CviLux Corporation