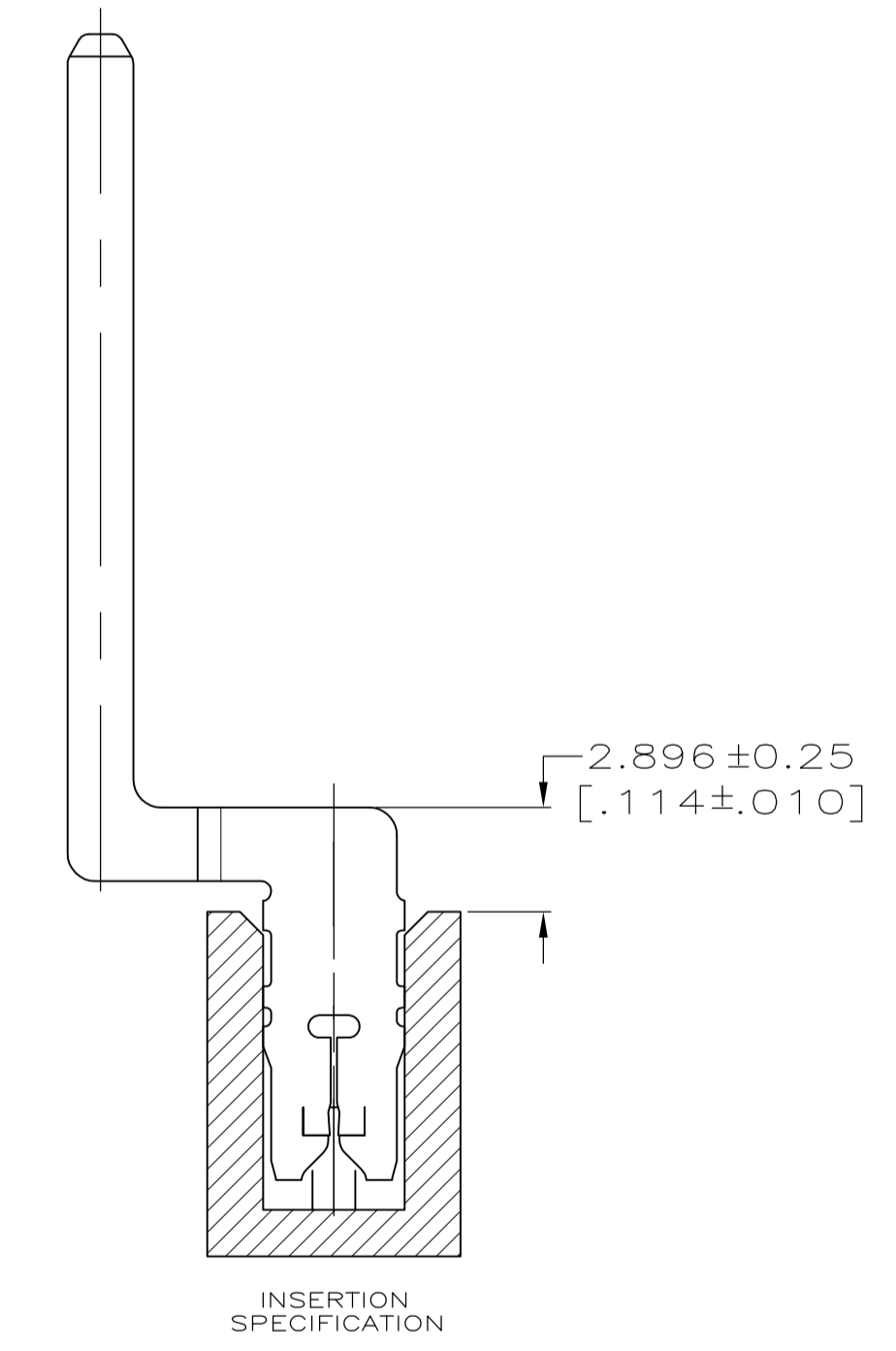
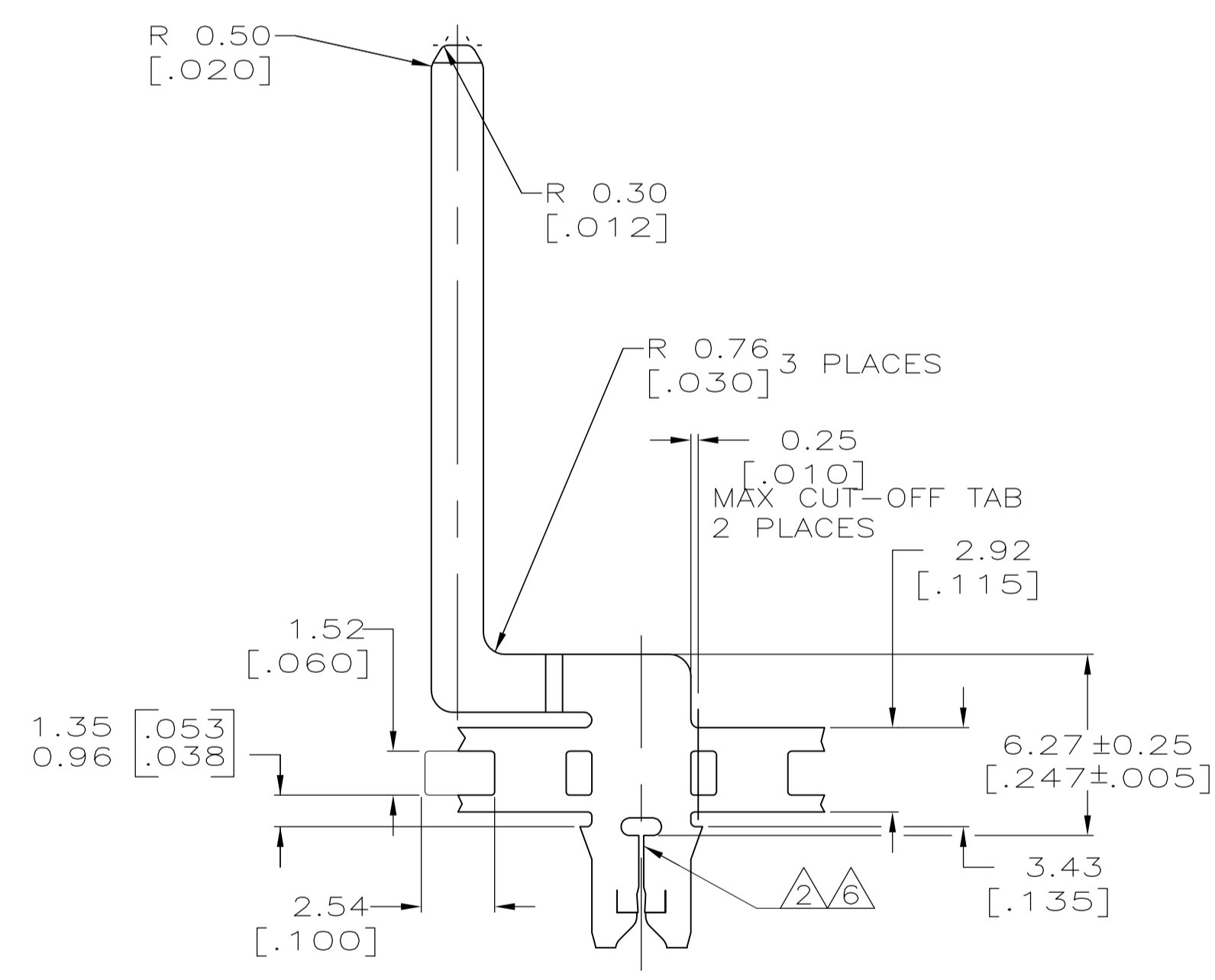
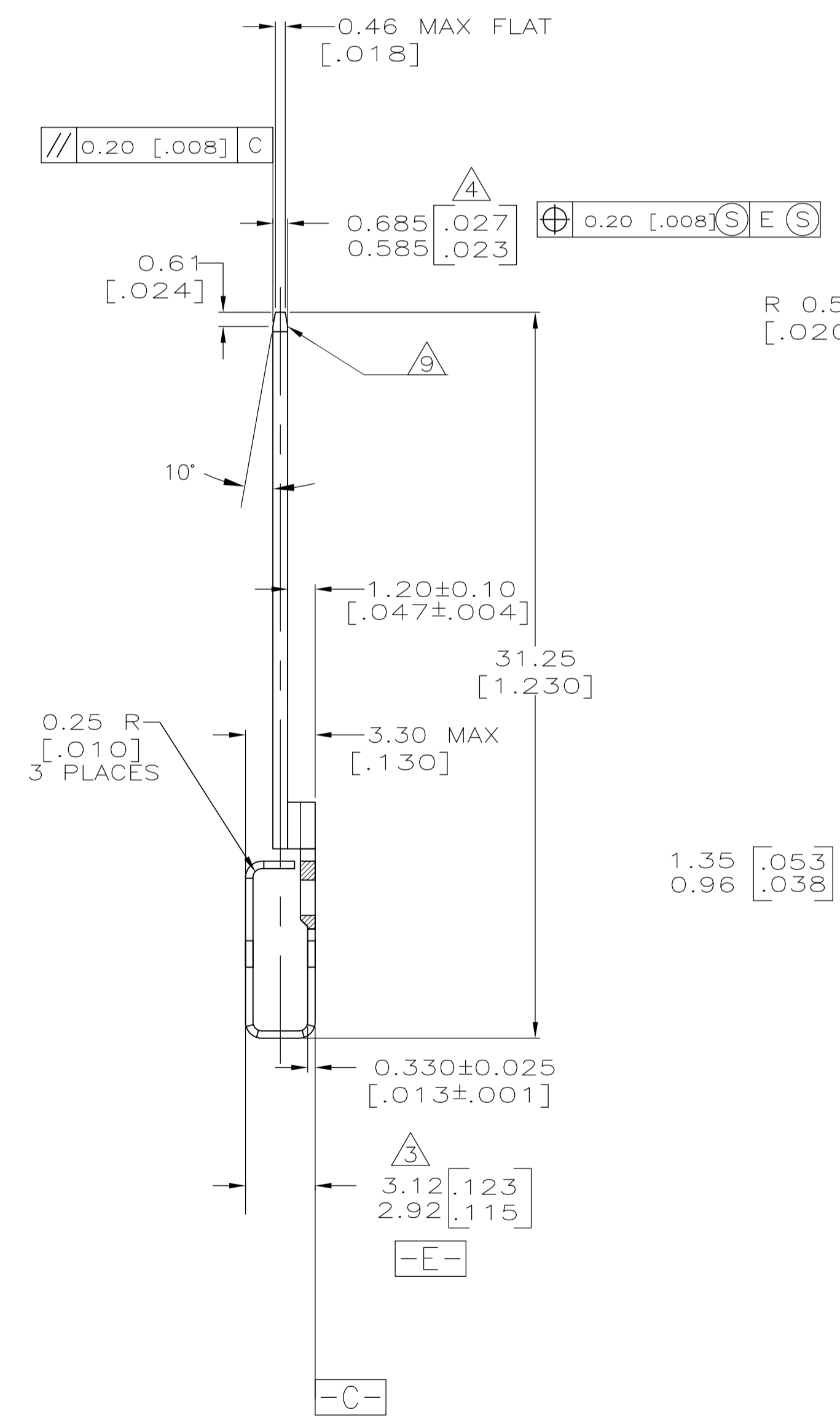
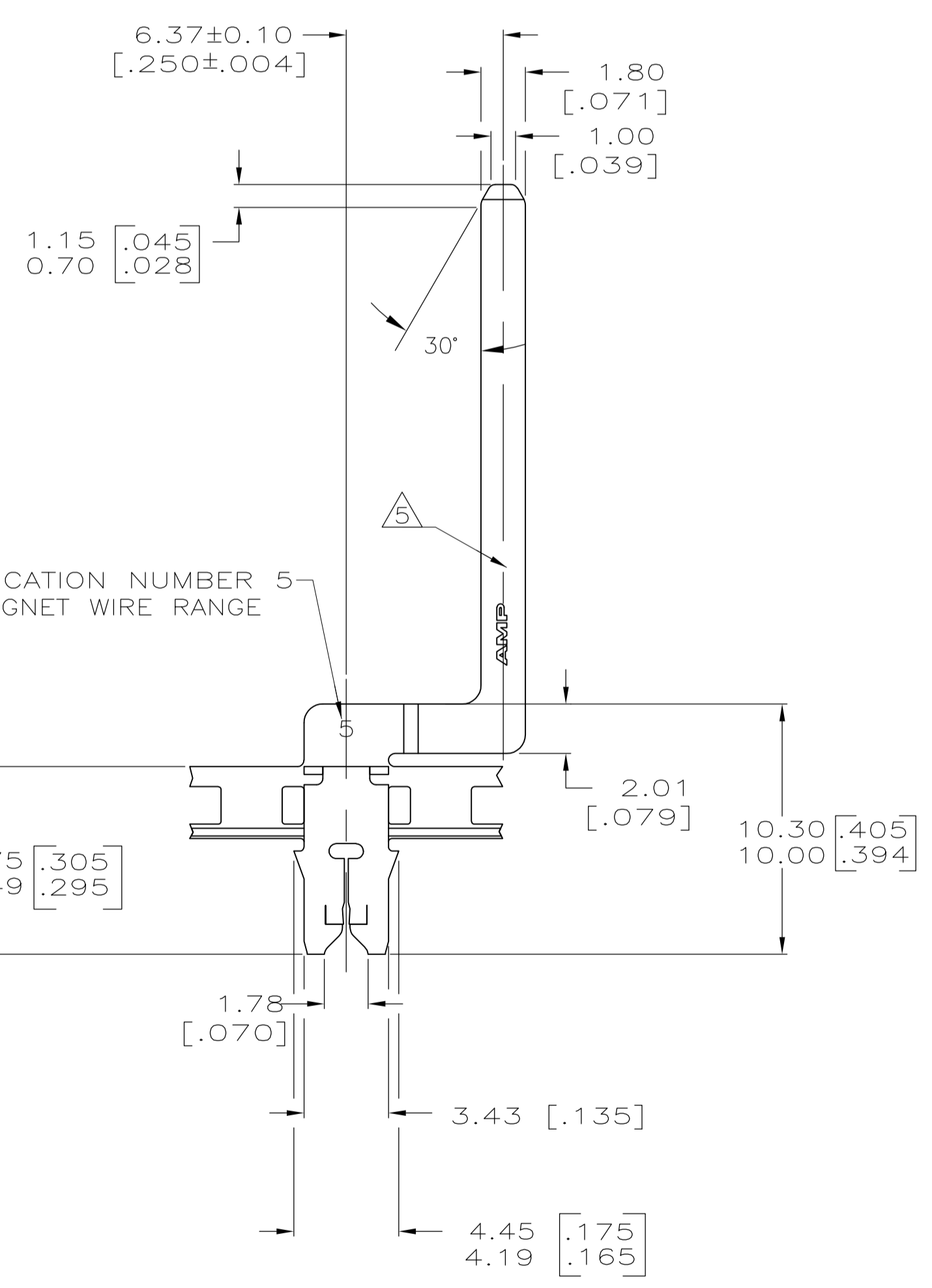
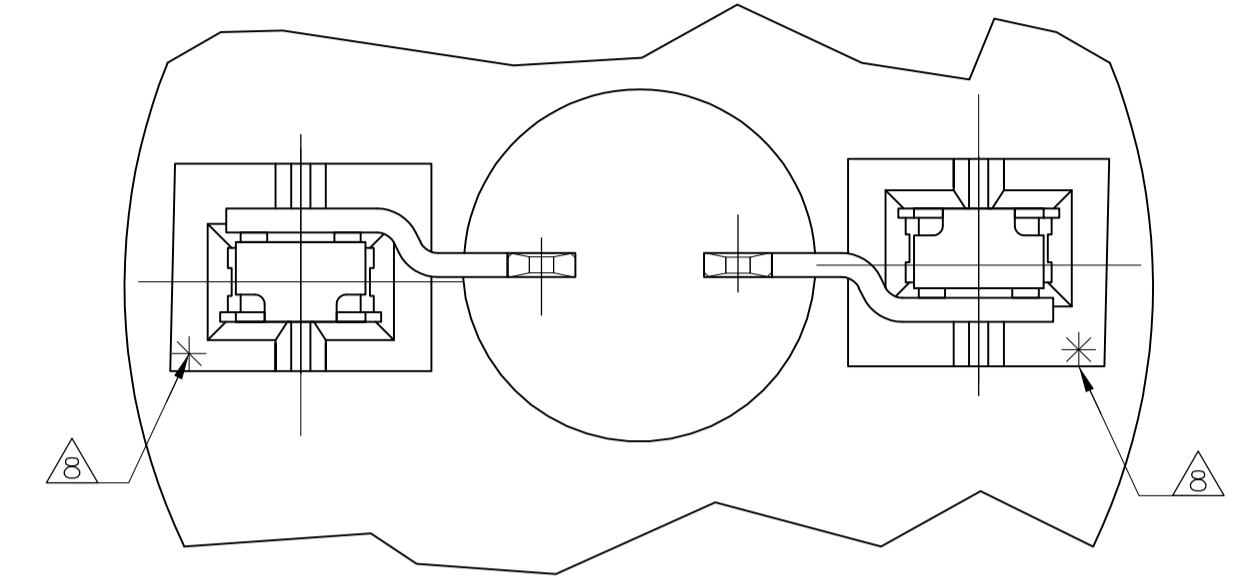
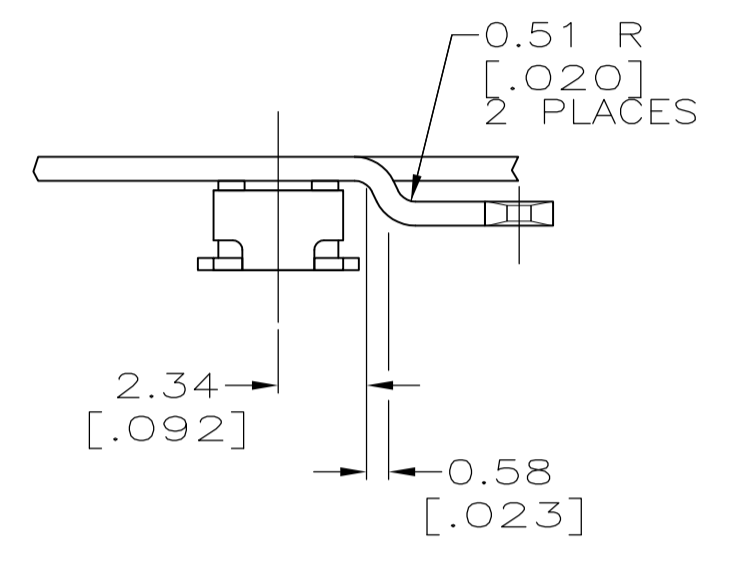


LOC		DIST		REVISIONS			
AF	50	REV	DATE	BY	APPV	DATE	BY
		K	09SEP14	FINISH INFO UPDATED	PKS	RRP	

- 1 CONTINUOUS STRIP ON REELS WITH TERMINALS LOCATED ON 12.7±0.08 [.500±.003] CENTERS.
- △2 SLOT TERMINATES EITHER A SINGLE OR DOUBLE MAGNET WIRES TO THE SAME TYPE AND SIZE, COPPER RANGE: 0.23-0.32mm [#31-#28] AWG.
- △3 BOX TO MEET THIS DIMENSION WHEN INSERTED INTO A CAVITY 3.12 [.123] DEEP.
- △4 SYMMETRY TO BE MEASURED AT THE "NOSE" OF THE BOX.
- △5 MEASURE PLATING THICKNESS ON THE TAB; FORMED SIDE OF THE TERMINAL.
- △6 SLOT MUST ACCEPTS AN 0.122 [.0048] DIA PIN GAGE; SLOT MUST NOT ACCEPT AN 0.20 [.008] DIA PIN GAGE. MEASURE ONE BEAM AT A TIME.
- △7 TIN PLATED OVER NICKEL PER QQ-N-290.
- △8 POINT OF MEASUREMENT, LOCATED APPROXIMATELY AS SHOWN
- △9 NO BURRS PERMITTED ON TIP OF TAB.



63773-1
PART NO.

THIS DRAWING IS A CONTROLLED DOCUMENT.		DIN R GRZYBOWSKI 09NOV95		TE Connectivity	
DIMENSIONS: MM [INCHES]		CHK M.S.FEHER 09NOV95			
TOLERANCES UNLESS OTHERWISE SPECIFIED:		APVD TL SHUTTER 09NOV95		NAME	
0 PLC ± -		PRODUCT SPEC		TAB	
1 PLC ± -		108-2012		1.80[.071] CONNECTING,	
2 PLC ± ± 0.15[.006]		APPLICATION SPEC		MAG-MATE	
3 PLC ± ± -		114-2046		SIZE CAGE CODE DRAWING NO	
4 PLC ± ± -		WEIGHT -		A1 00779 C=63773	
ANGLES ± ± -		CUSTOMER DRAWING		RESTRICTED TO	
MATERIAL BRASS		FINISH -		SCALE 5:1 SHEET 1 OF 1 REV K	