

MATERIALS AND FINISHES:

BODY, CAP AND C'NUT: STAINLESS STEEL
 PLATED: PASSIVATED

CONTACT: BRASS
 PLATED: GOLD (50μ-in MIN) OVER NICKEL (100μ-in MIN)

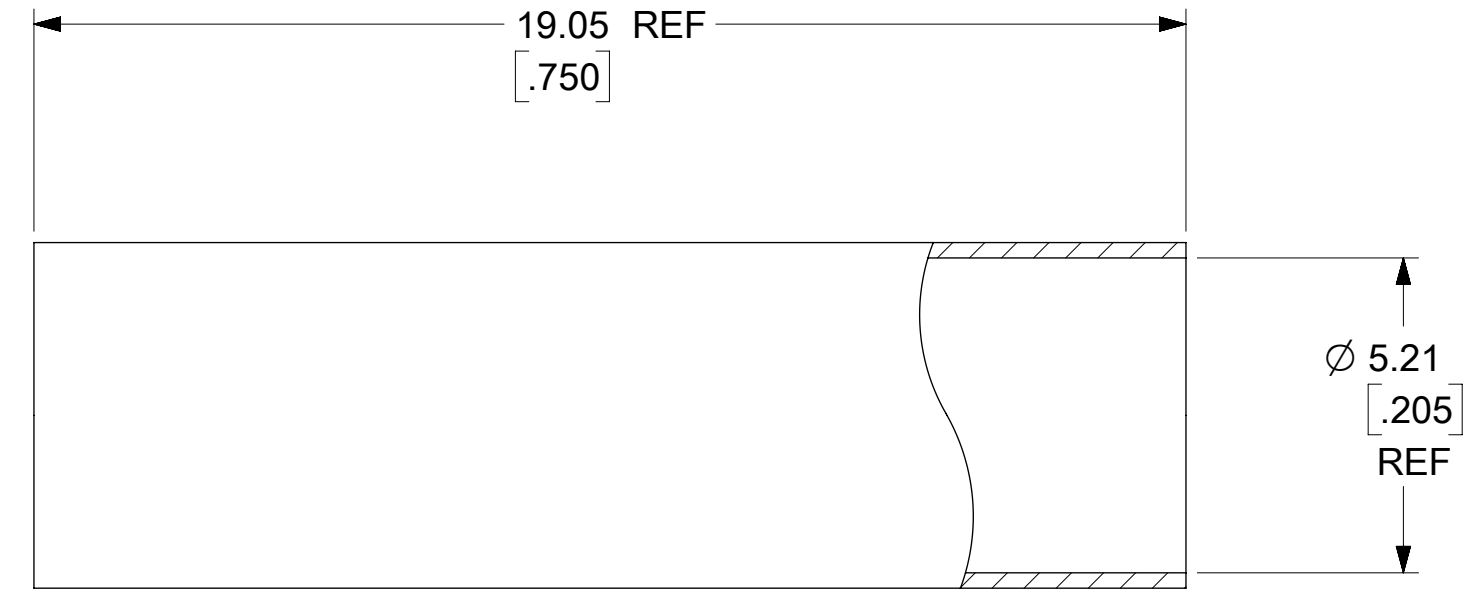
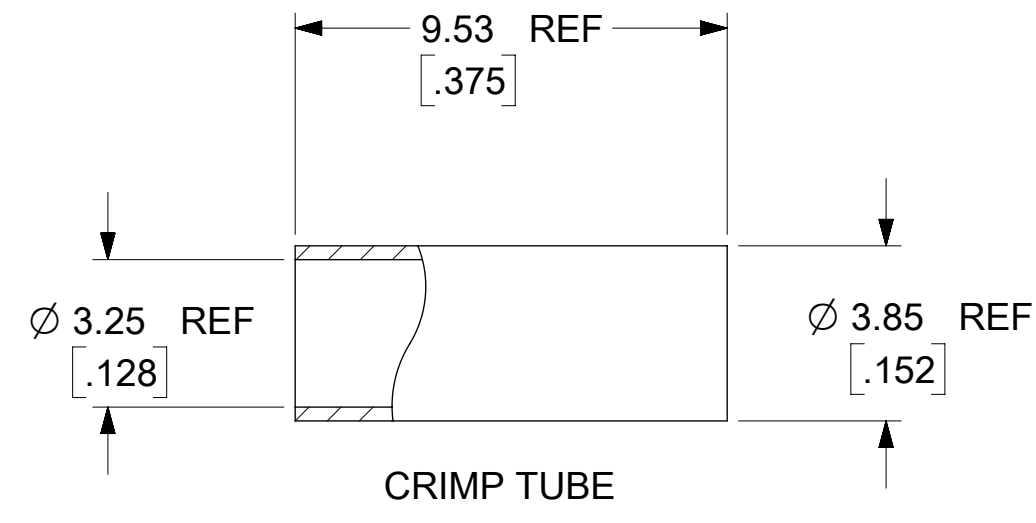
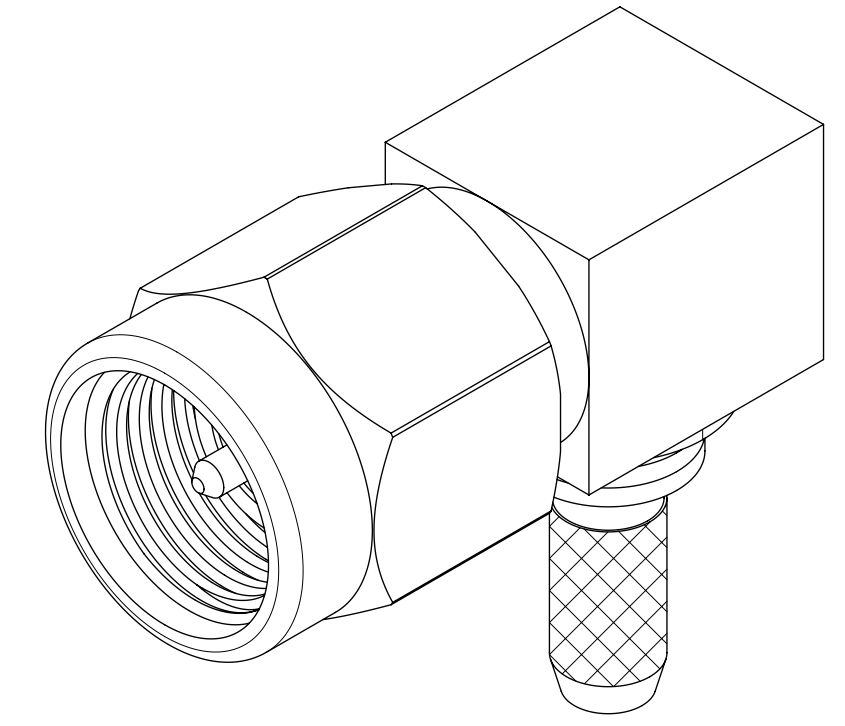
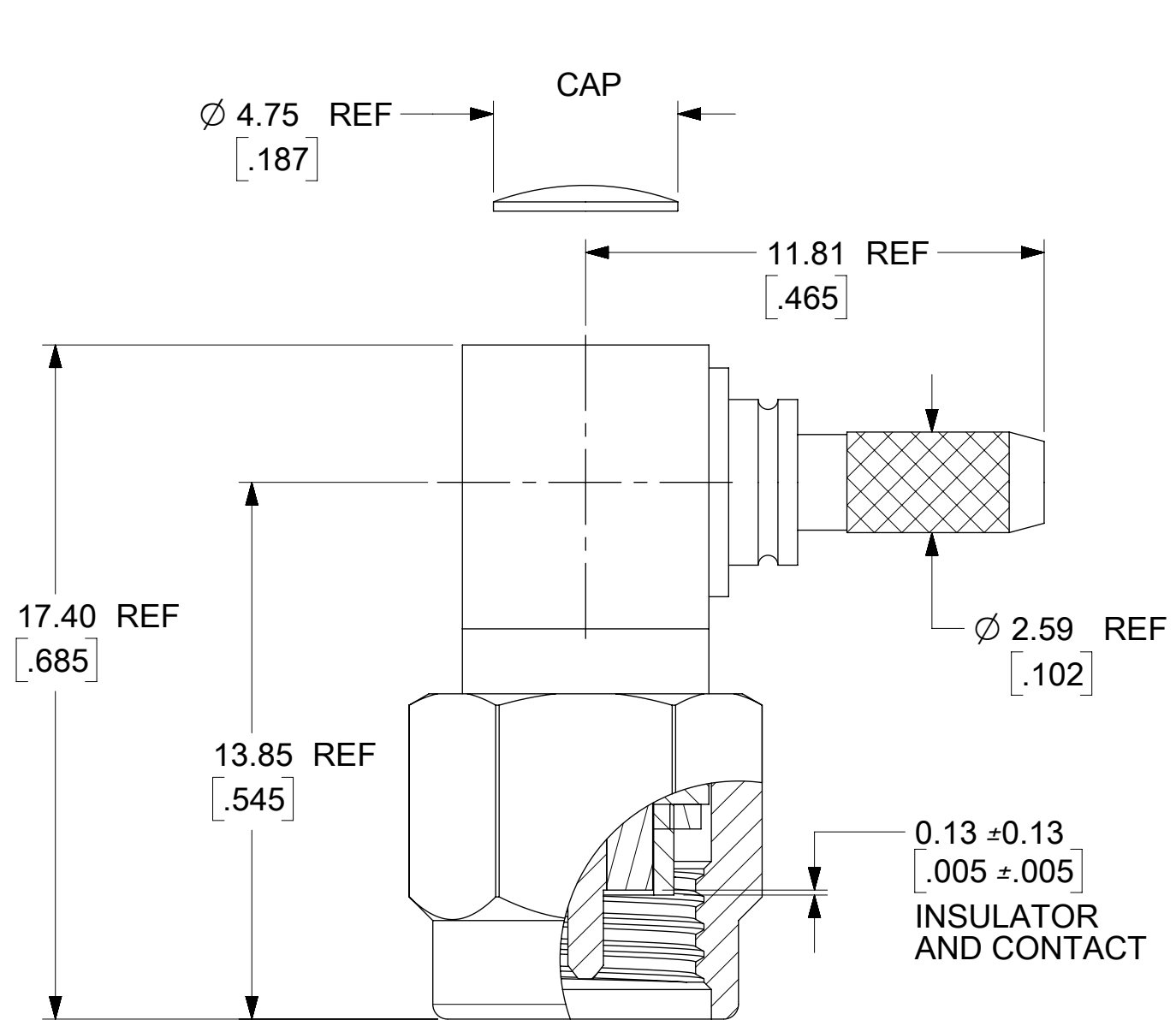
CRIMP TUBE: BRASS
 PLATED: NICKEL (100μ-in MIN)

INSULATOR: POLYETHYLENE UHMW PE
 SURFACE RESISTIVITY 10xE16 OHM/SQ
 VOLUME RESISTIVITY 10xE16 OHM CM

SHRINK TUBE: VERSAFIT 3/16-0
 COLOR: BLACK

C'RING: BERYLLIUM COPPER

GASKET: SILICONE RUBBER



PART # 73251-1360

ES-89675-1600	CABLE ASSY INSTRUCTIONS
PS-89675-1300	ELECTRO/MECH PERFORMANCE
MIL-STD-348, FIG. 310-1	INTERFACE
SPECIFICATION	DESCRIPTION

DOCUMENT STATUS	P1	RELEASE DATE	2019/06/21 20:29:25
-----------------	----	--------------	---------------------

SYMBOLS DIMENSION UNITS SCALE CURRENT REV DESC: EC NO: 619476 DRWN: BSHAH 2019/06/19 CHK'D: SSSHAH 2019/06/21 APPR: AROBERTSON 2019/06/21 INITIAL REVISION: DRWN: GMH 2000/06/26 APPR: GMH 2000/06/26 DRAFT WHERE APPLICABLE MUST REMAIN WITHIN DIMENSIONS THIRD ANGLE PROJECTION DRAWING SERIES C-SIZE 73251	THIS DRAWING CONTAINS INFORMATION THAT IS PROPRIETARY TO MOLEX ELECTRONIC TECHNOLOGIES, LLC AND SHOULD NOT BE USED WITHOUT WRITTEN PERMISSION			
	GENERAL TOLERANCES (UNLESS SPECIFIED)		PRODUCT CUSTOMER DRAWING DOCUMENT NUMBER SD-73251-136 MATERIAL NUMBER SEE NOTE	
	MM	INCH		DOC TYPE
	± 0.13	± 0.01		PSD
± 0.25	±	DOC PART	001	
±	±	REVISION	B1	
±	±	SHEET NUMBER	1 OF 2	

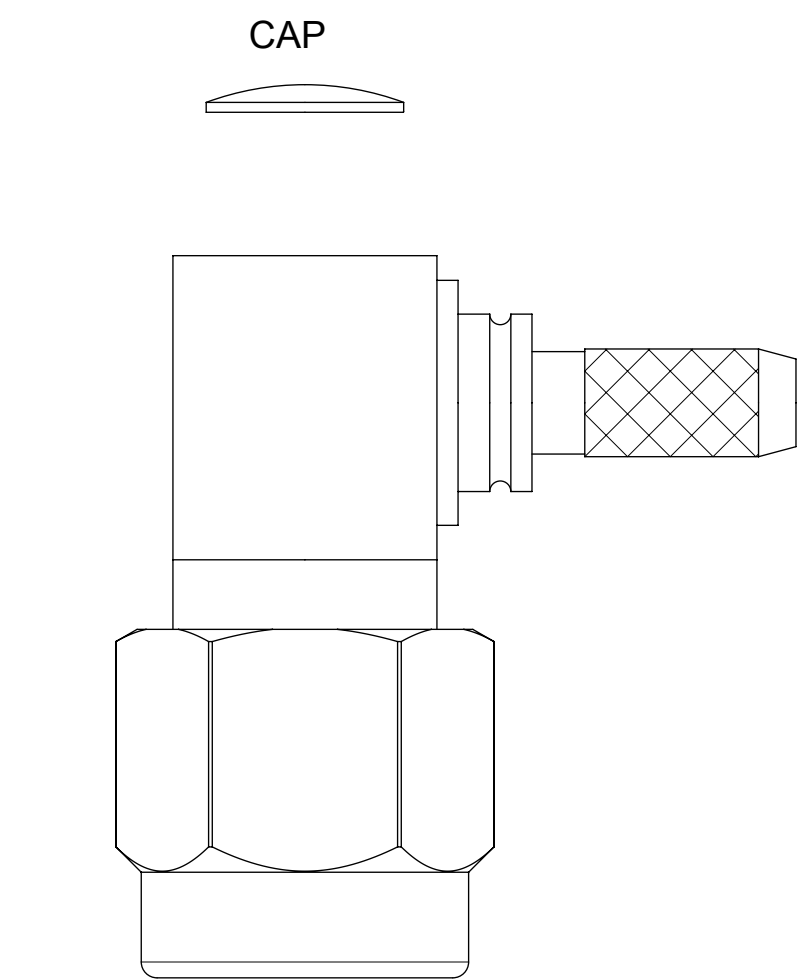


SMA PLUG RA FOR RG316
 SMA-PC/RA

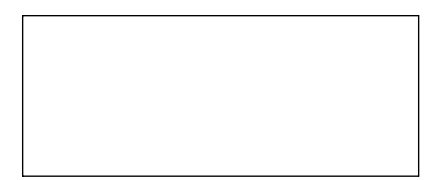
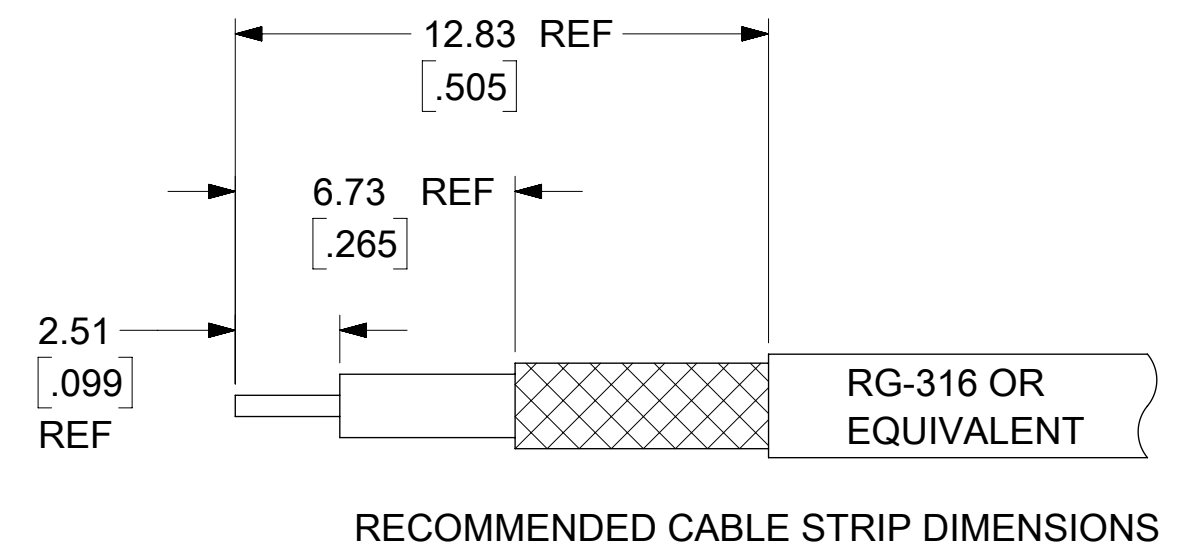
SD-73251-136

PSD 001 B1

1 OF 2



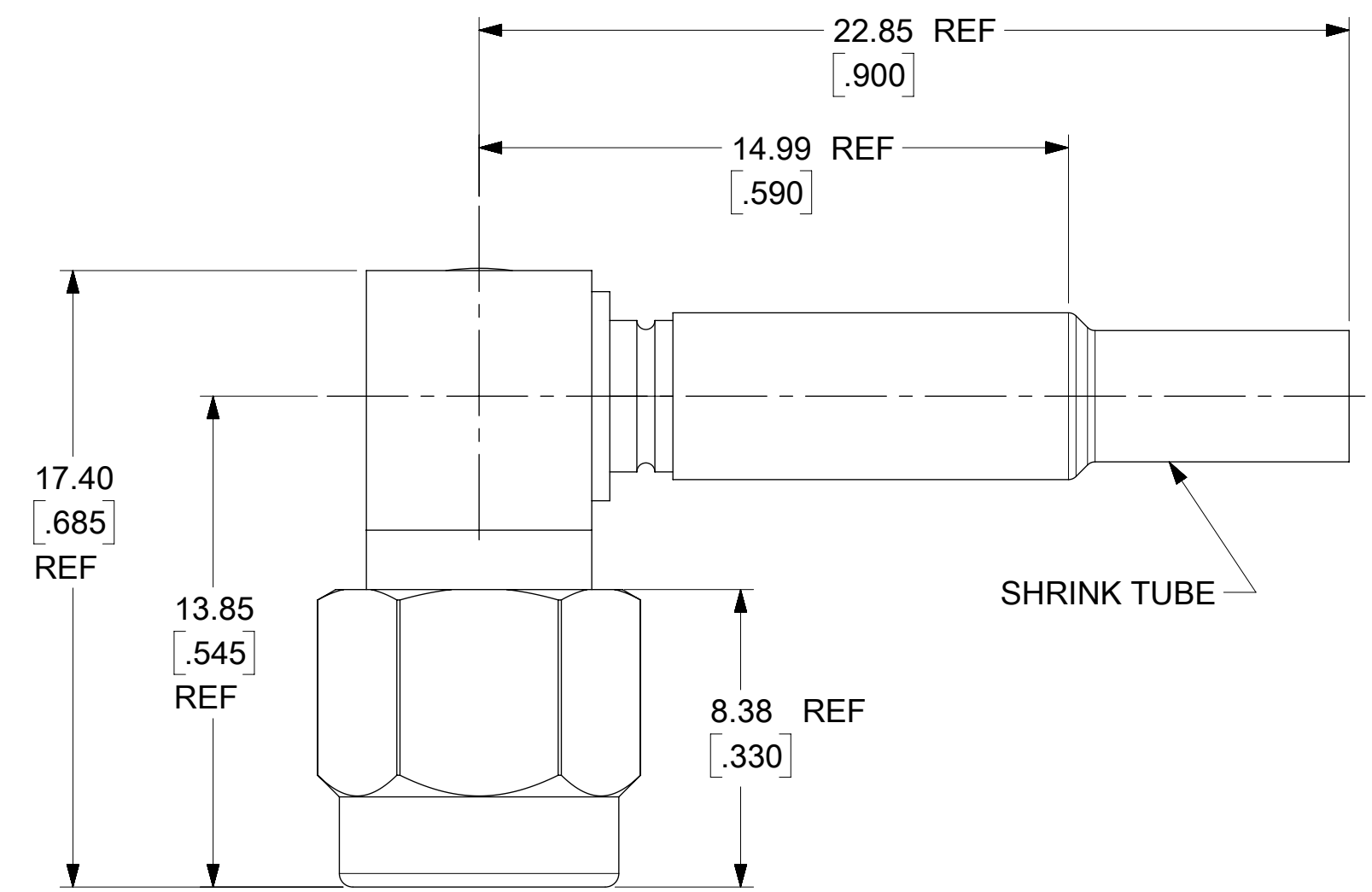
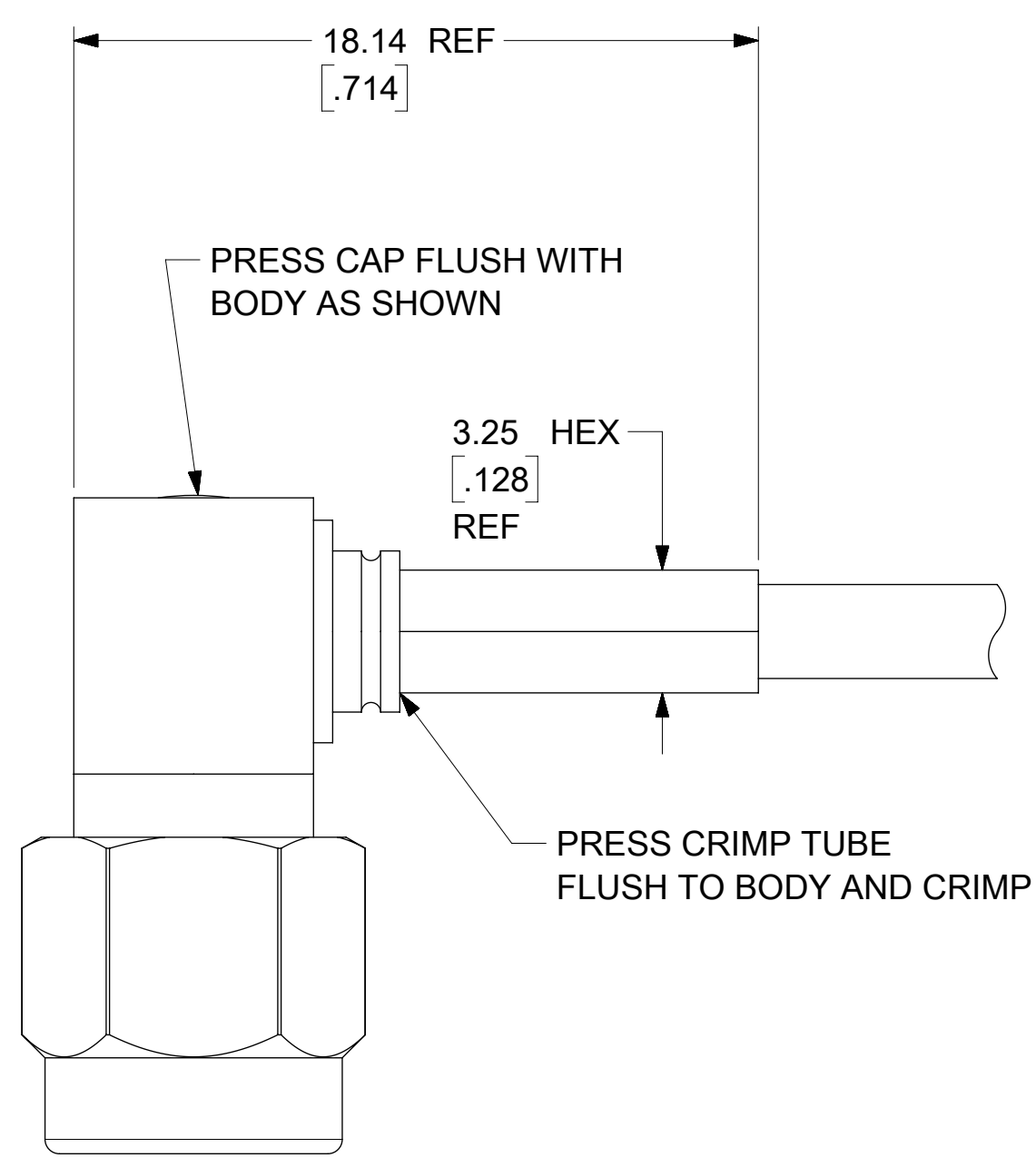
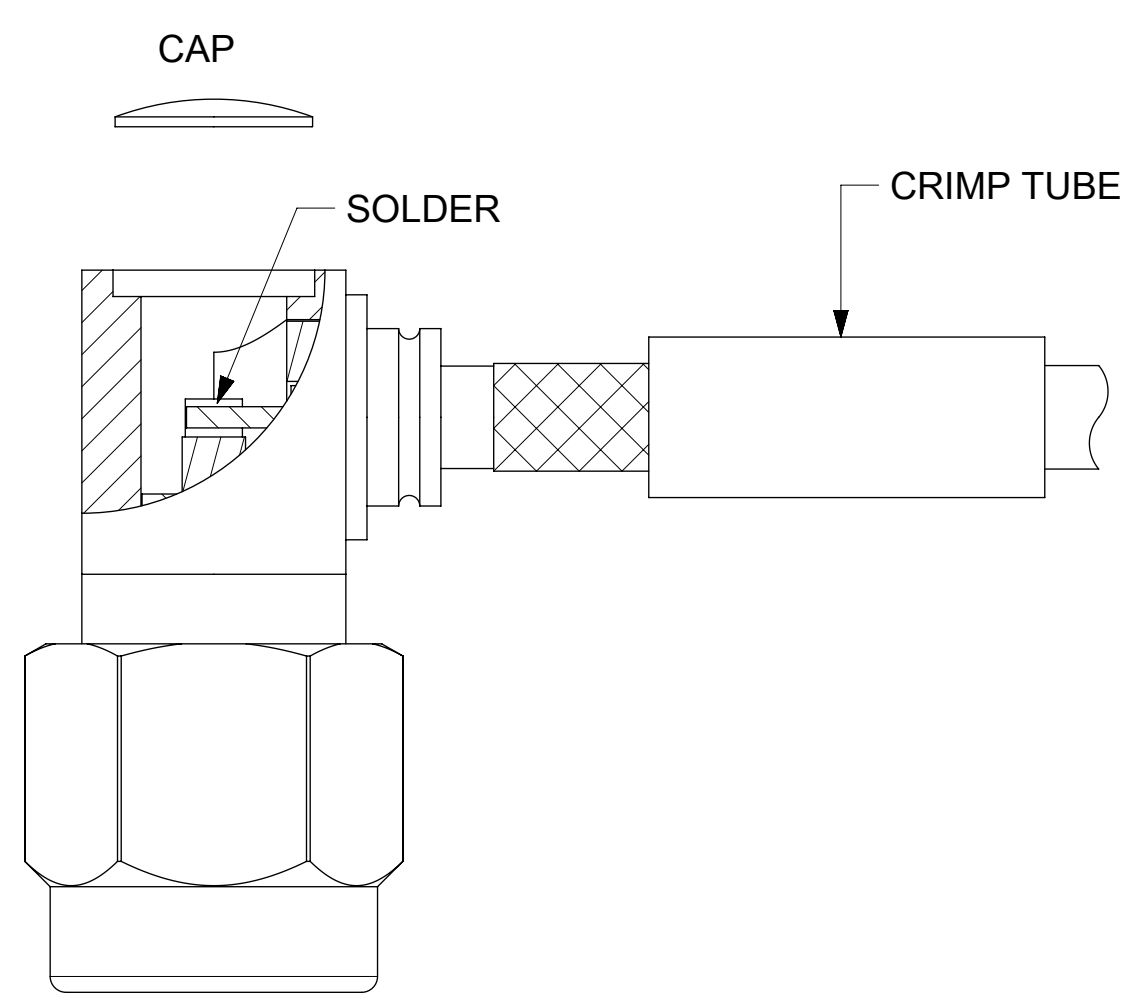
SMA PLUG R/A



CRIMP TUBE



SHRINK TUBE



SYMBOLS										THIS DRAWING CONTAINS INFORMATION THAT IS PROPRIETARY TO MOLEX ELECTRONIC TECHNOLOGIES, LLC AND SHOULD NOT BE USED WITHOUT WRITTEN PERMISSION									
DIMENSION UNITS					SCALE					CURRENT REV DESC:									
mm					NTS					EC NO: 619476									
GENERAL TOLERANCES (UNLESS SPECIFIED)										DRWN: BSHAH 2019/06/19									
ANGULAR TOL ± 0.5°										CHK'D: SSSHAH 2019/06/21									
4 PLACES ±										APPR: AROBERTSON 2019/06/21									
3 PLACES ±										INITIAL REVISION:									
2 PLACES ± 0.13										DRWN: RFC_PLMIMP 2017/12/12									
1 PLACE ± 0.25										APPR: RFC_PLMIMP 2017/12/12									
0 PLACES ±										DOCUMENT NUMBER									
DRAFT WHERE APPLICABLE MUST REMAIN WITHIN DIMENSIONS					THIRD ANGLE PROJECTION					DRAWING					SERIES				
					C-SIZE					73251					SD-73251-136				
															PSD 001 B1				
															SHEET NUMBER				
															2 OF 2				



SMA PLUG RA FOR RG316
SMA-PC/RA

PRODUCT CUSTOMER DRAWING

DOCUMENT NUMBER SD-73251-136 DOC TYPE PSD DOC PART 001 REVISION B1

MATERIAL NUMBER CUSTOMER SHEET NUMBER 2 OF 2