

MICRO SWITCH

A DIVISION OF HONEYWELL INTERNATIONAL REGULATORS COMPANY
TROY, N.Y. 12182
FED. MFR. CODE 91929

SWITCH-ENCLOSED

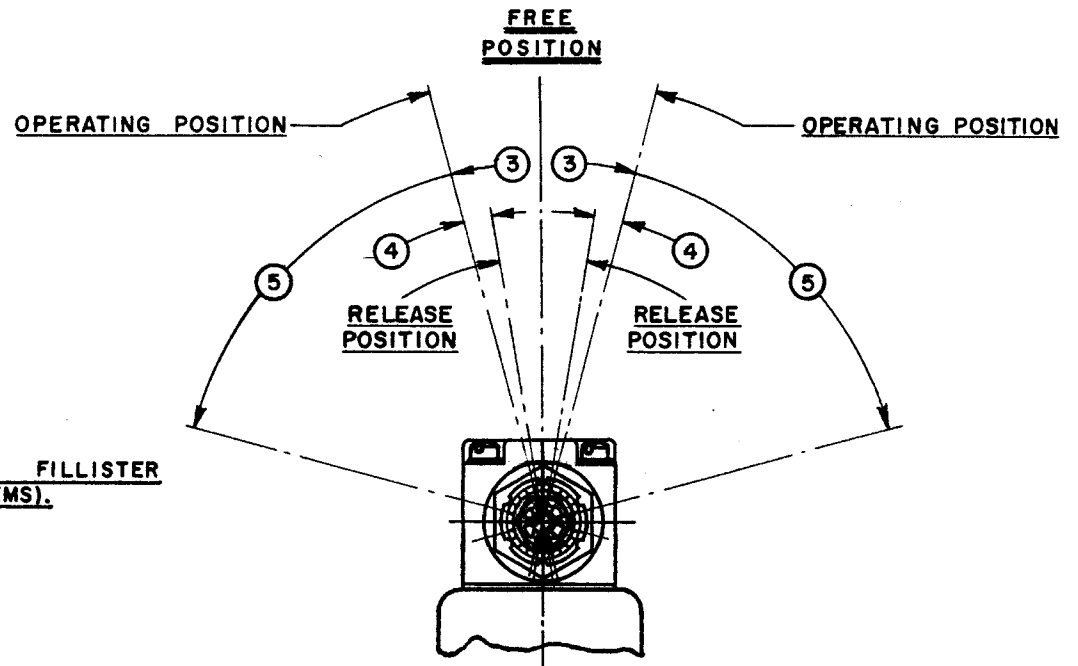
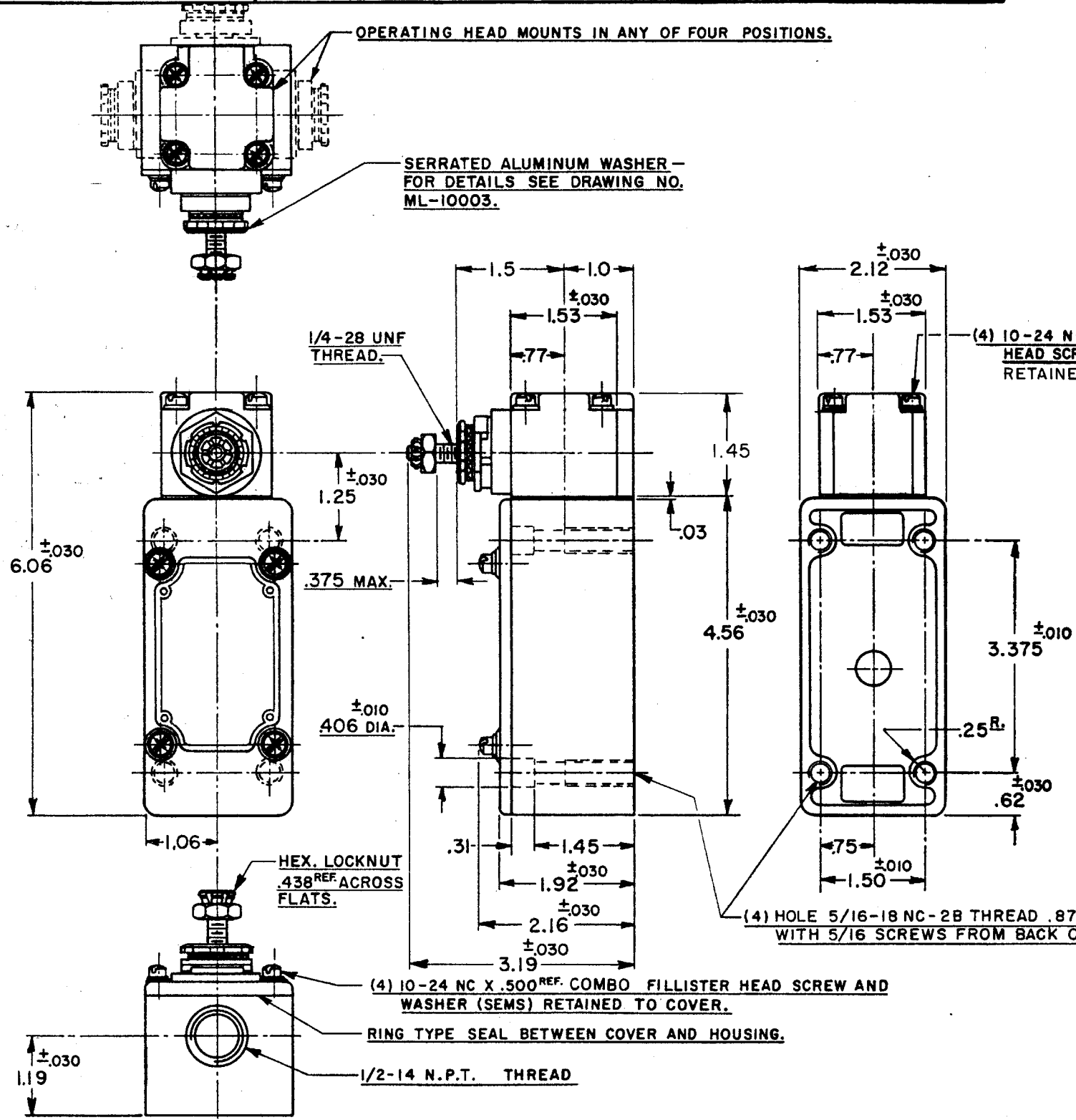
CATALOG LISTING

51ML22

THIS DRAWING COVERS A PROPRIETARY ITEM AND IS THE PROPERTY OF MICRO SWITCH, A DIVISION OF HONEYWELL. THIS DRAWING IS NOT TO BE COPIED OR USED WITHOUT THE APPROVAL OF MICRO SWITCH.



74-96.3
 DRAWN J A P 26 SEPT 83
 CHECK C E L 30 SEPT 83
 CHECK C E L 30 SEPT 83
 ISSUE 10
 DRAWING NUMBER M
 RELEASE NO. SR 4813
 REPLACES 51ML22



- NOTES
- 1 - IT IS ESSENTIAL TO PREVENT ENTRANCE OF HARMFUL AGENTS THRU THE CONDUIT OPENING TO OBTAIN THE FULL BENEFIT OF THE SEALED CONSTRUCTION PROVIDED IN THIS UNIT
 - 2 - SWITCH IS ASSEMBLED FOR ACTUATION IN CLOCKWISE DIRECTION
 - 3 - TO CONVERT SWITCH FOR ACTUATION IN THE COUNTER-CLOCKWISE DIRECTION ONLY, REMOVE THE HEAD AND SLIDE THE CAM TOWARD THE REAR OF THE HEAD SUFFICIENTLY TO DISENGAGE FROM THE FLATS ON THE SHAFT. ROTATE THE CAM 180° AND RE-ENGAGE THE CAM WITH THE FLATS ON THE SHAFT
 - 4 - SHAFT MAY BE ADJUSTED TO ACTUATE THE SWITCH IN THE CLOCKWISE DIRECTION ONLY, OR THE COUNTER-CLOCKWISE DIRECTION ONLY.

CHARACTERISTICS	
OPERATING TORQUE	25 OZ. IN. MAX.
FULL OVERTRAVEL TORQUE	35 OZ. IN. MAX.
RELEASE TORQUE	4 OZ. IN. MIN.
PRETRAVEL	③ 12° MAX.
DIFFERENTIAL TRAVEL	④ 5° MAX.
OVERTRAVEL	⑤ 60° MIN.
SWITCH-BASIC REPLACEMENT	1MK5

ELECTRICAL DATA	
CONTACT ARRANGEMENT	S. P. D. T.
BREAK DISTANCE	.020 MIN.
20 A-120, 240, 480 OR 600 VAC; 3/4 HP-120 VAC, 1 1/2 H.P.-240 VAC; 1/2 A-115 VDC, 1/4 A-230 VDC PILOT DUTY RATING: 600 VAC MAX.	

SCALE 1/2 TO 1	
DO NOT SCALE PRINT	
UNLESS OTHERWISE SPECIFIED	
DIMENSIONS ARE IN INCHES	
TOLERANCES ARE:	
ONE PLACE (.)	±.030
TWO PLACE (.00)	±.015
THREE PLACE (.000)	±.005
ANGLES	±
WEIGHT	

