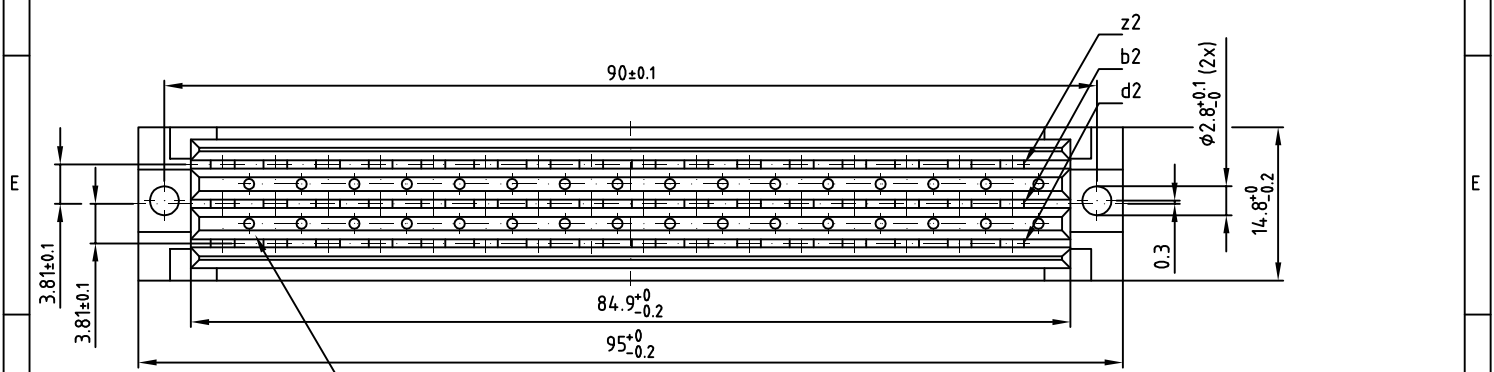
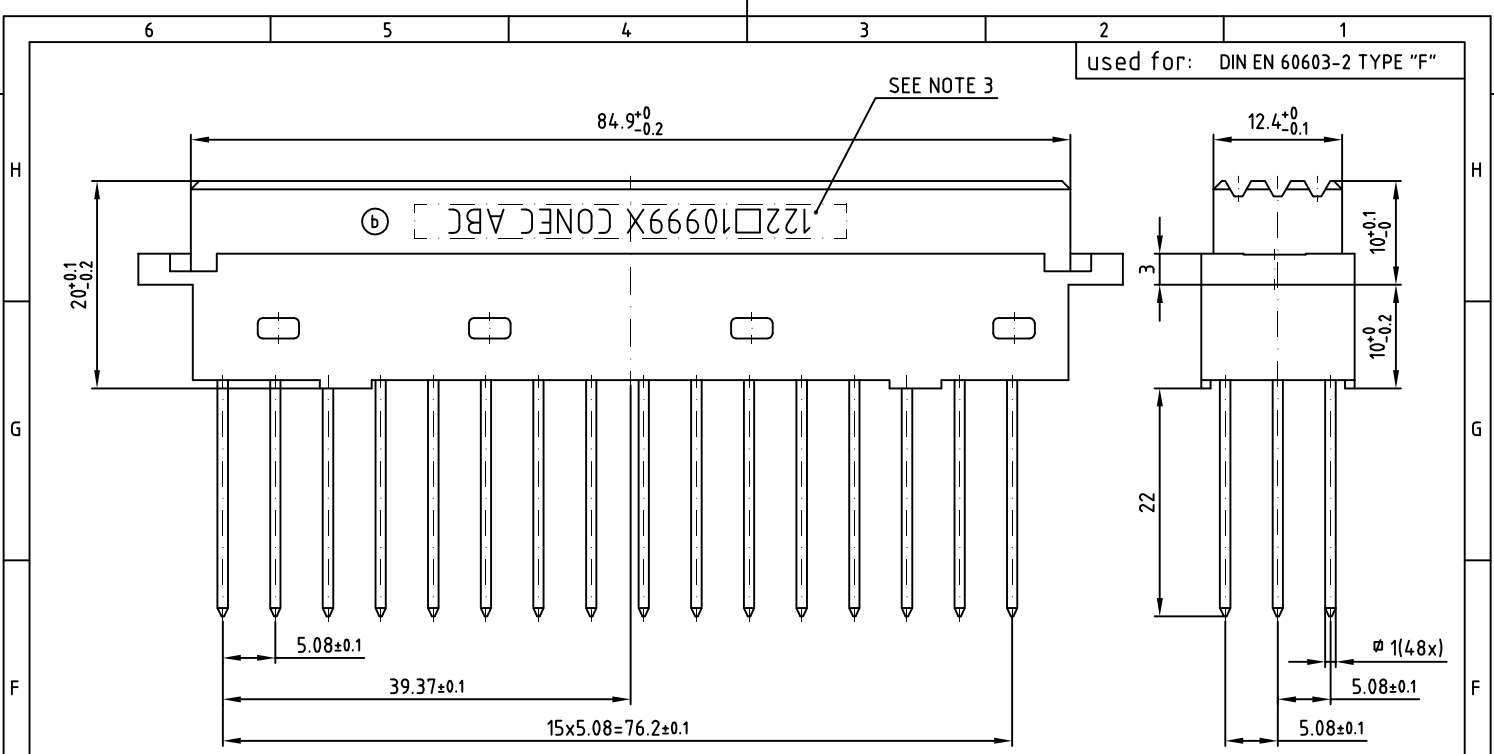
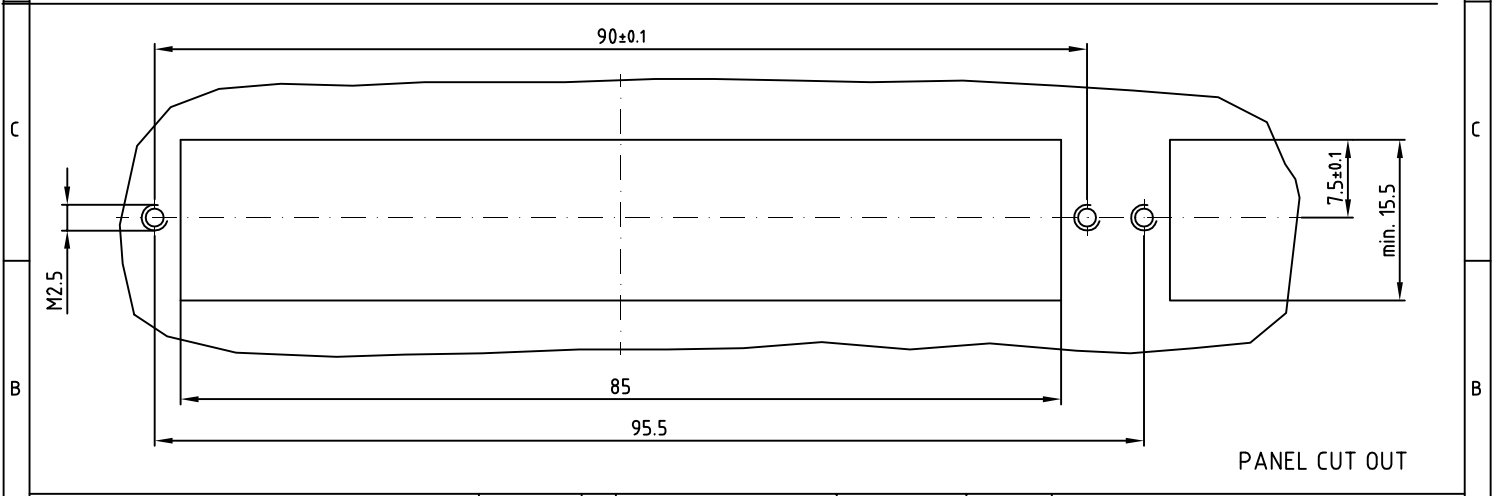


used for: DIN EN 60603-2 TYPE "F"



- NOTES:
- INSULATORS: PBT UL 94 V-0, GREY
 - CONTACTS: COPPER ALLOY; PLATING (SEE PART NO.):
 - PLEASE ADD A for GOLD over NICKEL; 50 MATING CYCLES
 - PLEASE ADD B for GOLD over NICKEL; 400 MATING CYCLES
 - PLEASE ADD C for GOLD over NICKEL; 500 MATING CYCLES
 - CONNECTOR IS PART MARKED: $\text{12210999X CONEC ABC}$



THIS DRAWING MAY NOT BE COPIED OR REPRODUCED IN ANY WAY, AND MAY NOT BE PASSED ON TO A THIRD PARTY, WITHOUT WRITTEN PERMISSION. OWNERSHIP AND COPYRIGHT OF CONEC GmbH DO NOT ALTER CAD DRAWING BY HAND	tolerance			 dim. in mm	scale: 2:1
					material: SEE NOTES
					title: FEMALE CONNECTOR TYPE "F" 48pos. WIRE WRAP
					dwg no: 12K1A469
RoHS compliant			2007 date drawn 11.06. Lehmenkühler appd. 11.06. Mickenbecker norm. DIN EN 60603-2 d-old	DIN-A 3 sh: 1/1	
3 x b Ä5829 28.09.2015 K.H. a Original				part no: 12210999X	