

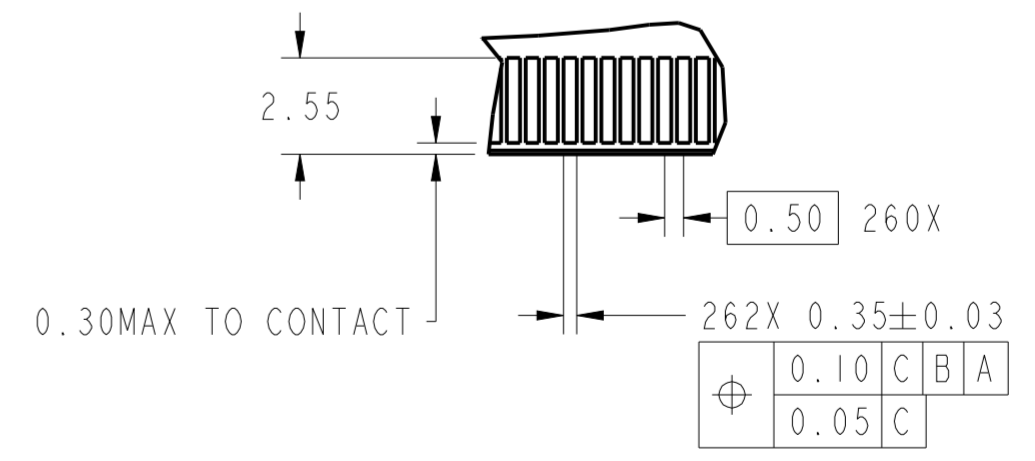
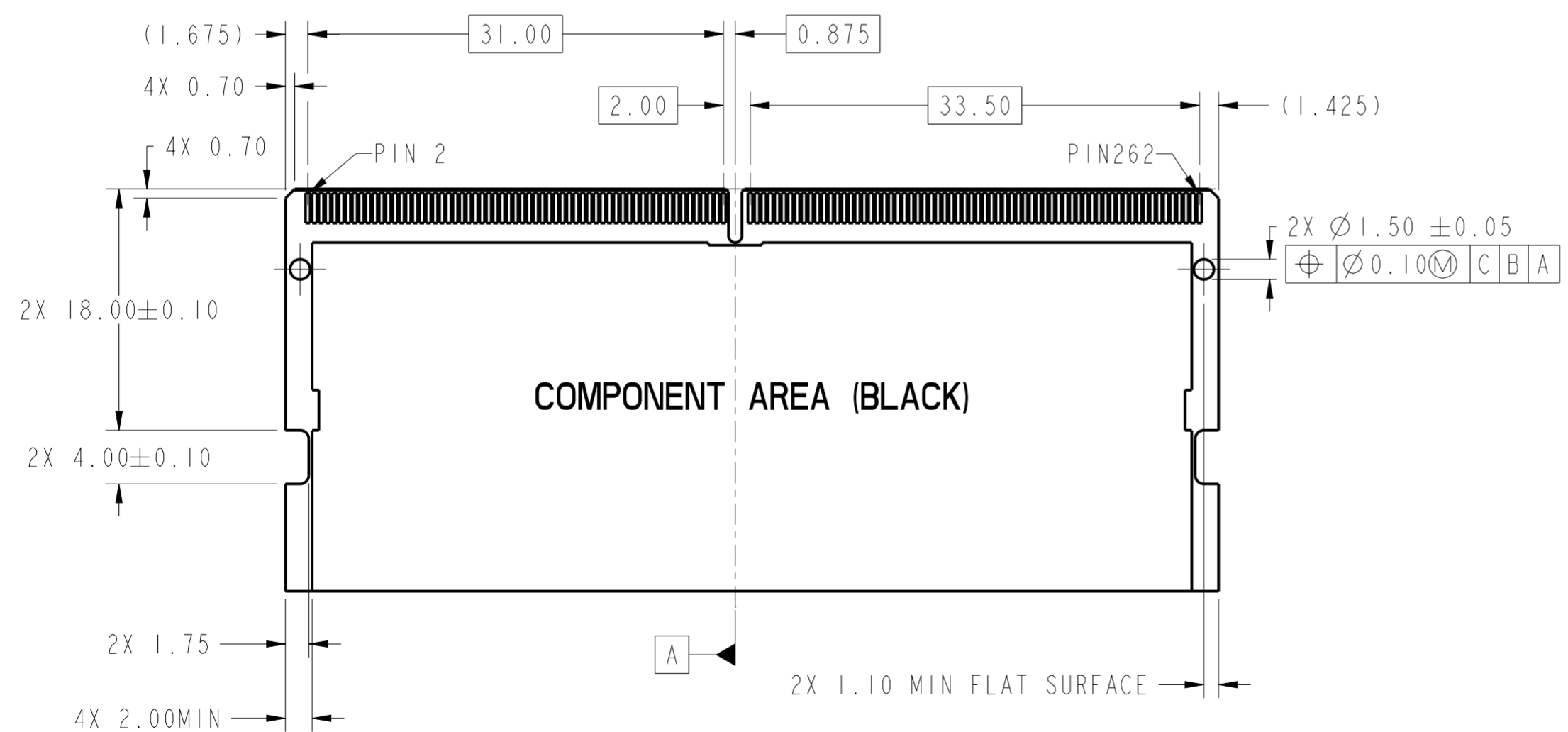
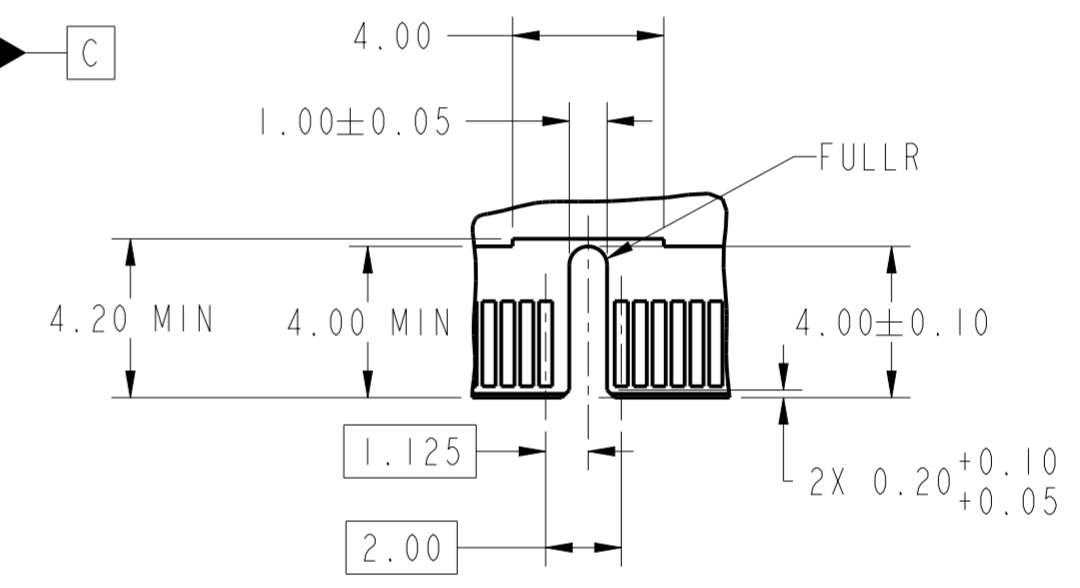
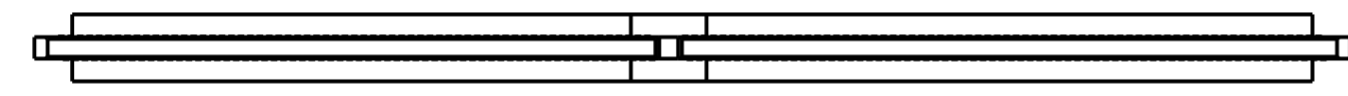
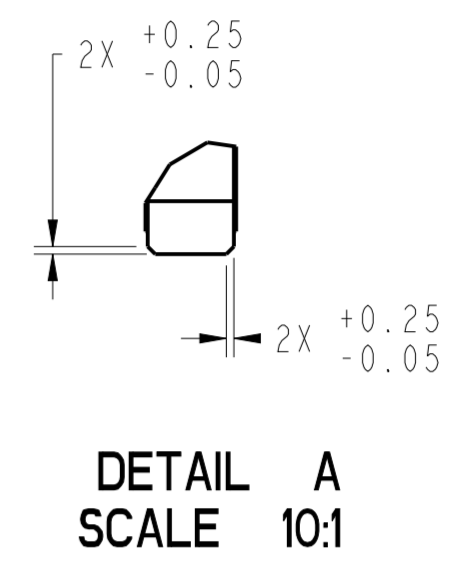
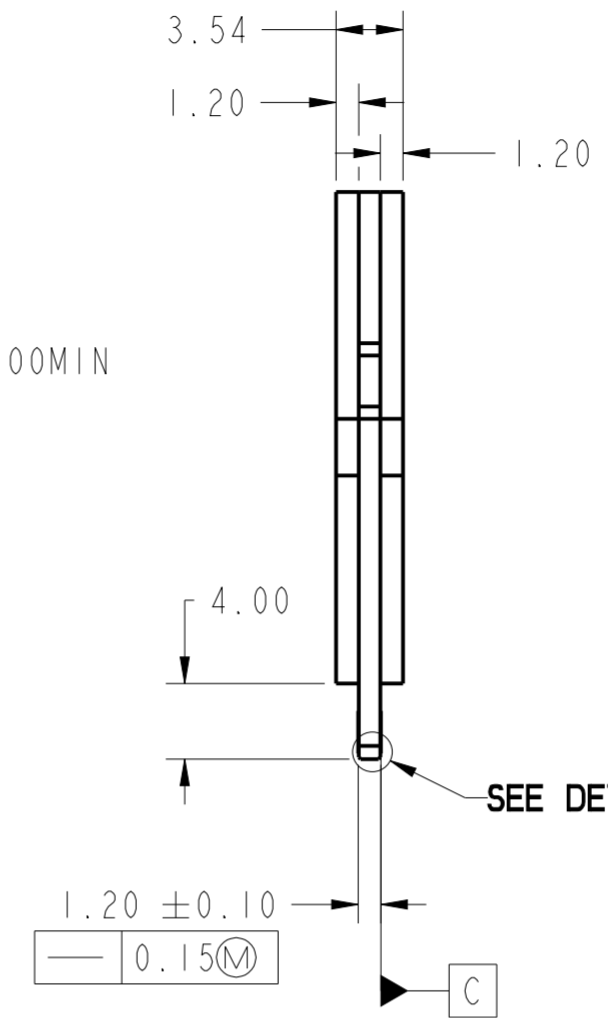
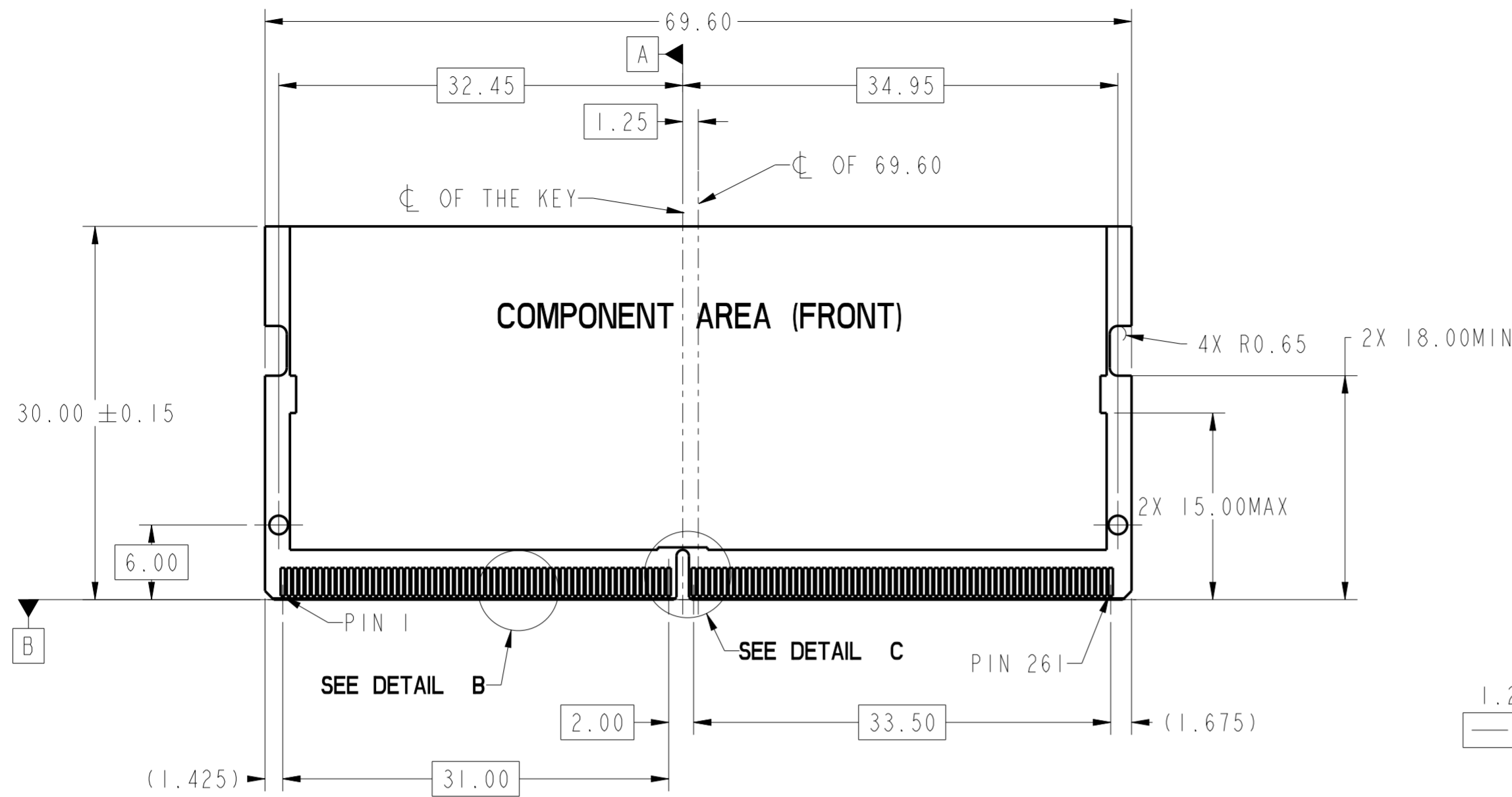
MATING/UNMATING VIEW

- MATING: ① INSERTING (25°) → ② ROTATING → ③ FIXED
- UNMATING: ④ UNFIXED → ⑤ ROTATING → ⑥ WITHDRAWING

spec ref	dr	Ji-Lu Lu	2020/11/26	projection	MM	size	A2	scale	1:1
tolerance std	eng	-	2021/01/11			ecn no	-	rel level	Preliminary
ISO 406	chr	-	-			product family	-		
ISO 1101	appr	-	-	Amphenol FCI	DDR5 SODIMM R/A 262PIN	cat. no.	10155967	rev	1
surface	linear	0.X	±0.30	CONNECTOR 0.50mm PITCH		Product-Customer Drw		sheet 1 of 4	
ISO 1302	angular	0°	±2°						

Amphenol FCI

© 2016 AFCI

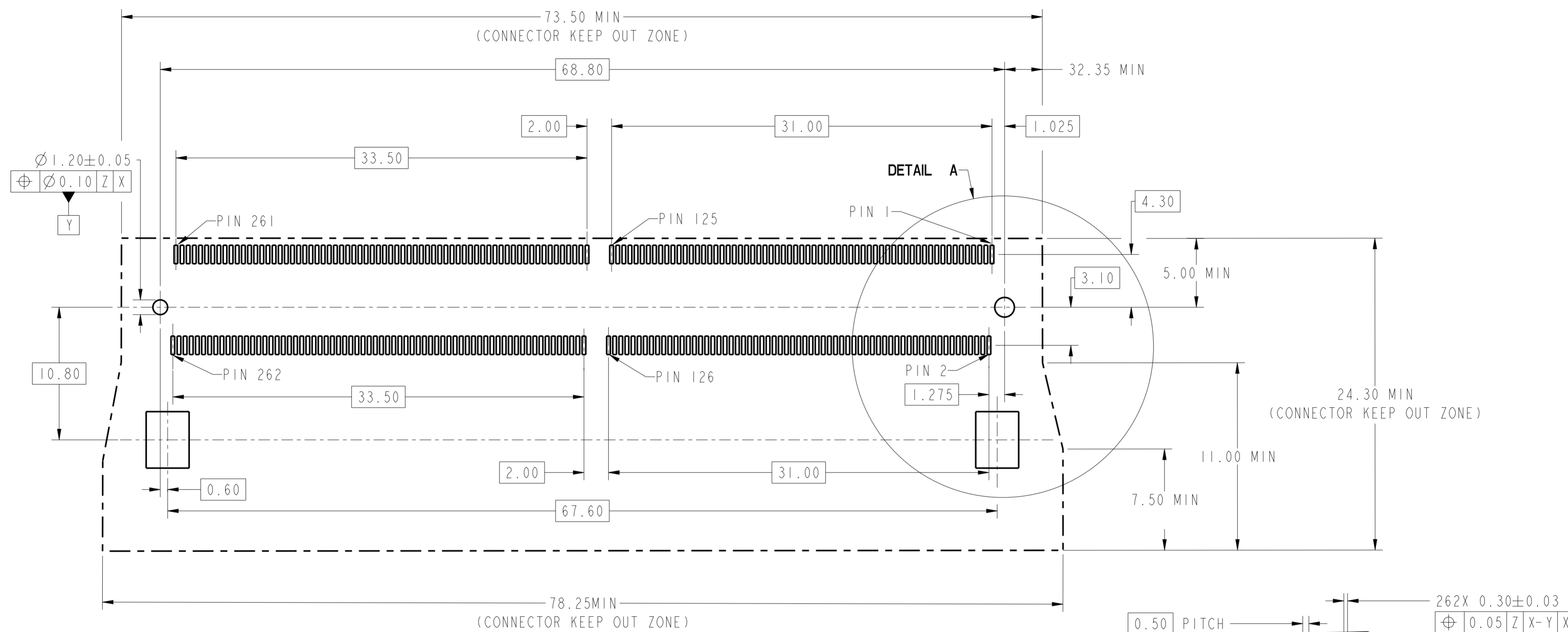


**RECOMMEND CARD**

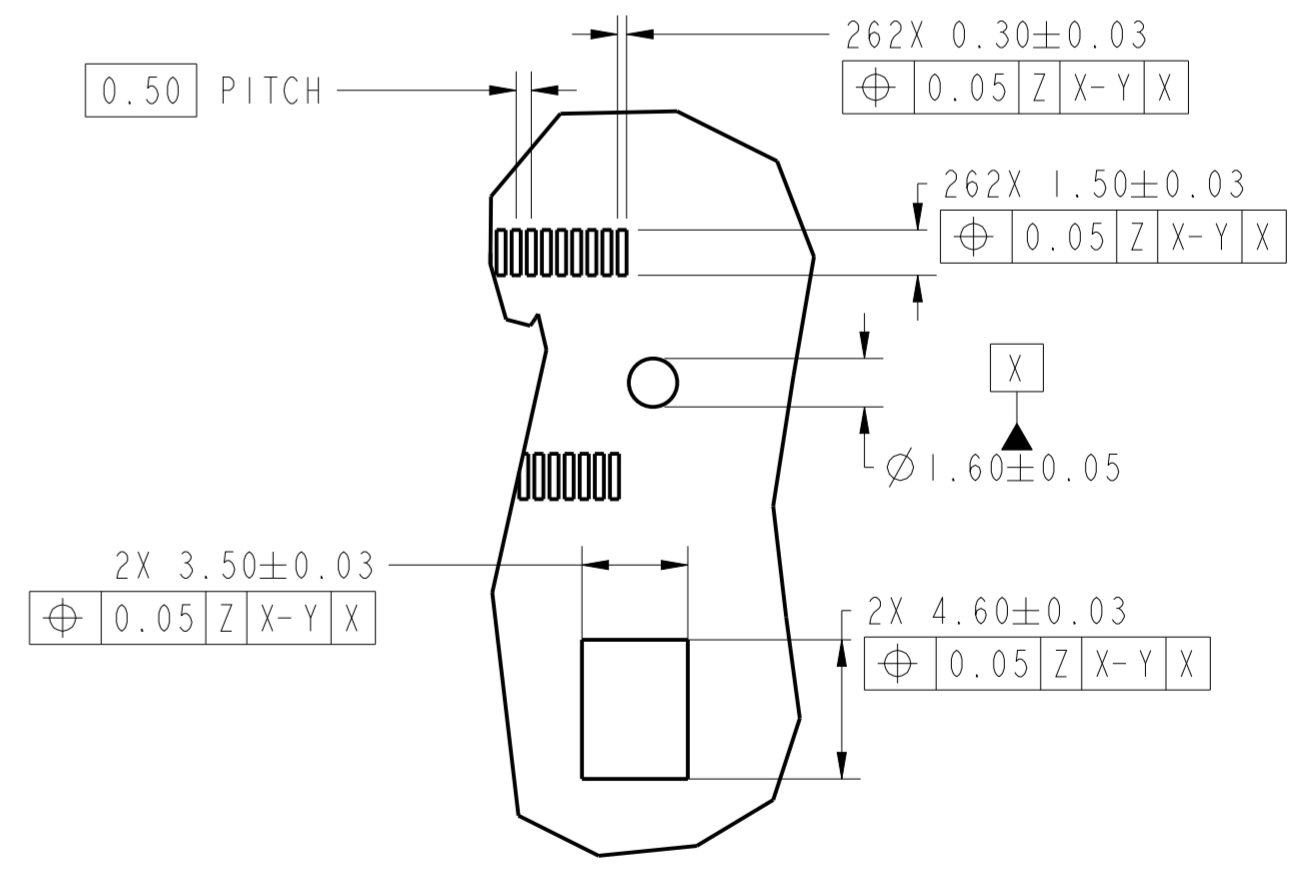
spec ref	dr	Ji-Lu	2020/1/26	projection	MM	size	A2	scale	1:1	
tolerance std	eng	-	2021/01/11			ecn no	-	rel level	Preliminary	
ISO 406	chr	-	-			product family	-		rel level	Preliminary
ISO 1101	appr	-	-	<b>Amphenol FCI</b>		title	<b>DDR5 SODIMM R/A 262PIN</b>		cat. no.	10155967
surface	linear	0.X	±0.30	<b>Amphenol FCI</b>		connector	<b>CONNECTOR 0.50mm PITCH</b>		Product-Customer Drw	sheet 2 of 4
ISO 1302	angular	0°	±2°	<b>Amphenol FCI</b>		dwg no	<b>10155967</b>		rev	1

Amphenol FCI

© 2016 APCI



RECOMMEND PCB LAYOUT  
THE TOLERANCE UNLESS SPECIFIED IS ±0.05MM



DETAIL A  
SCALE 4:1

spec ref	dr	Ji-Lu	2020/1/26	projection	MM	size	A2	scale	1:1
tolerance std	eng	-	2021/01/11			ecn no	-	rel level	Preliminary
ISO 406 ISO 1101	chr	-	-			product family	-		
TOLERANCES UNLESS OTHERWISE SPECIFIED	appr	-	-	<b>Amphenol FCI</b>		<b>DDR5 SODIMM R/A 262PIN</b>		cat. no.	-
surface	linear	0.X	±0.30	<b>CONNECTOR 0.50mm PITCH</b>		dwg no	10155967	rev	1
ISO 1302	angular	0°	±2°	<b>Product-Customer Draw</b>		sheet 3 of 4			

Amphenol FCI

© 2016 APCI

- NOTES:
1. MATERIAL:
    - 1.1 HOUSING:HIGH TEMPERATURE MATERIAL ,COLOR:BLACK.
    - 1.2 CONTACT:COPPER ALLOY.
    - 1.3 SOLDER TAIL AND HOLD DOWN:STAINLESS STEEL.
  2. FINISH:
    - 2.1 CONTACT: GOLD FLASH PLATING ON SOLDER TAIL.  
GOLD PLATING (THICKNESS SEE PART NUMBER DESCRIPTION)  
ON CONTACT AREA.
    - 2.2 SOLDER TAIL:  
MATTE TIN PLATING ALL OVER,NICKEL UNDERPLATED ALL OVER.
  3. DATE CODE : SSYYWWD  
S: MANUFACTURING SITE  
VALLEY GREEN =V  
DONGGUAN= DG  
MALAYSIA= M  
YY:YEAR  
WW:WEEK  
D: DAY (MONDAY=1)
  4. PRODUCT SPECIFICATION:GS-12-XXXX
  5. PACKAGE SPECIFICATION:GS-14-XXXX
  6. PRODUCT MARKING, (PART NUMBER&LOT CODE),ON THIS SURFACE
  7. LEAD FREE PRODCUT MEETS THE EUROPEAN UNION DRECTIVES&OTHER  
COUNTRY REGULATIONS AS DESCRIBED IN GS-47-0004
  8. THE CONNECTOR WILL WITHSTAND EXPOSURE TO 260°C PEAK TEMPERATURE  
FOR 10-30 SECONDS IN CONVECTION,INFAR-RED ,OR VAPOR PHASE  
REFLOW OVEN

PART NUMBER DESCRIPTION:

10155967-0 0 X R H L F



Amphenol  
FCi

© 2016 APCI

spec ref		dr	Ji-Lu	2020/1/26	projection	MM	size	A2	scale	1:1		
tolerance std		eng	-	2021/01/11		←	ecn no		-			
ISO 406 ISO 1101		chr	-				rel level		Preliminary			
TOLERANCES UNLESS OTHERWISE SPECIFIED		appr	-		product family		-		-			
surface	linear	0.X	±0.30		Amphenol FCi	title	DDR5 SODIMM R/A 262PIN		dwg no	10155967	rev	1
		0.XX	±0.20				CONNECTOR 0.50mm PITCH					
		0.XXX	±0.10				cat. no.					
ISO 1302	angular	0°	±2°									