

PART
NAME

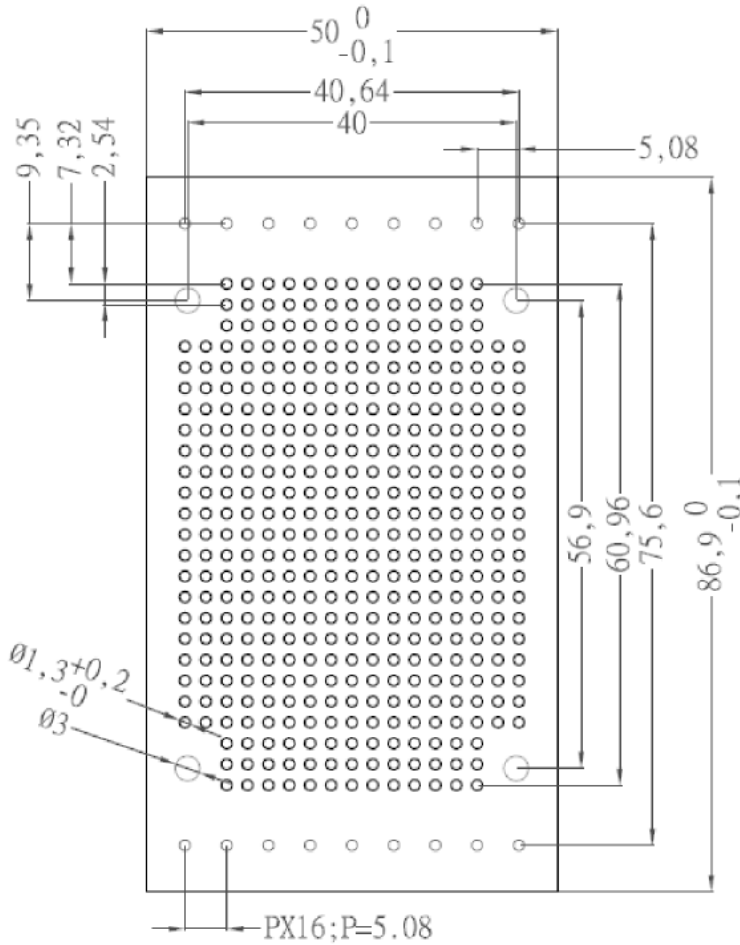
PCB FOR DIN RAIL MOUNT BOX

PART
No.

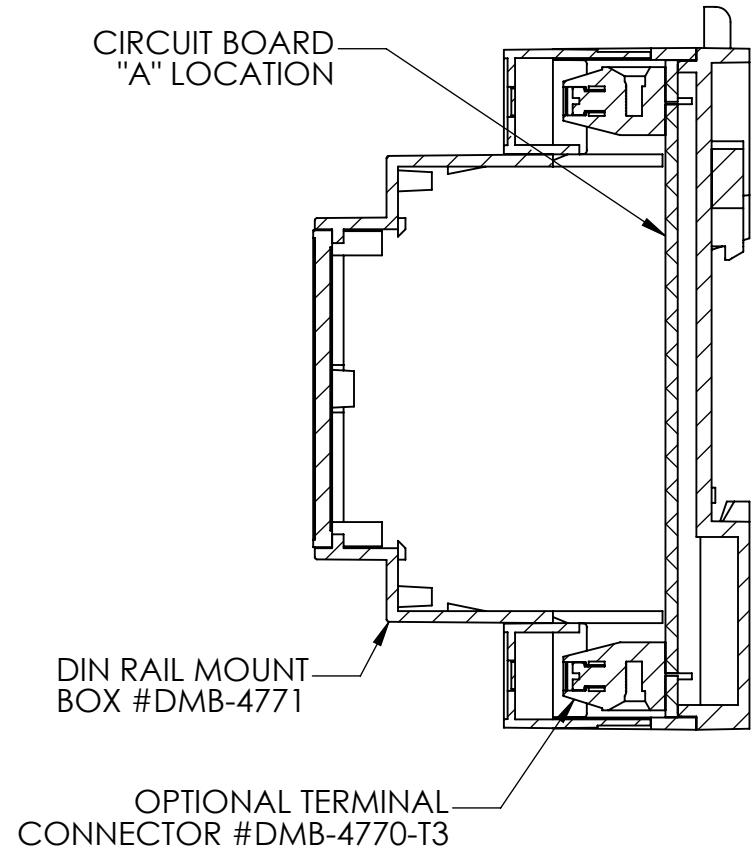
DMB-4771-CB

REV.
DATE

8-2-12



PCB THICKNESS: 1.6mm



NOTES:
DIMENSIONS IN MM.

DESIGNED TO FIT CIRCUIT BOARD
"A" LOCATION OF THE DIN RAIL
MOUNT MULT-BOARD BOX.

PRE PLATED HOLES FOR EASY
SOLDERING.

TERMINALS CAN BE USED IN
MULTIPLES OF (3)