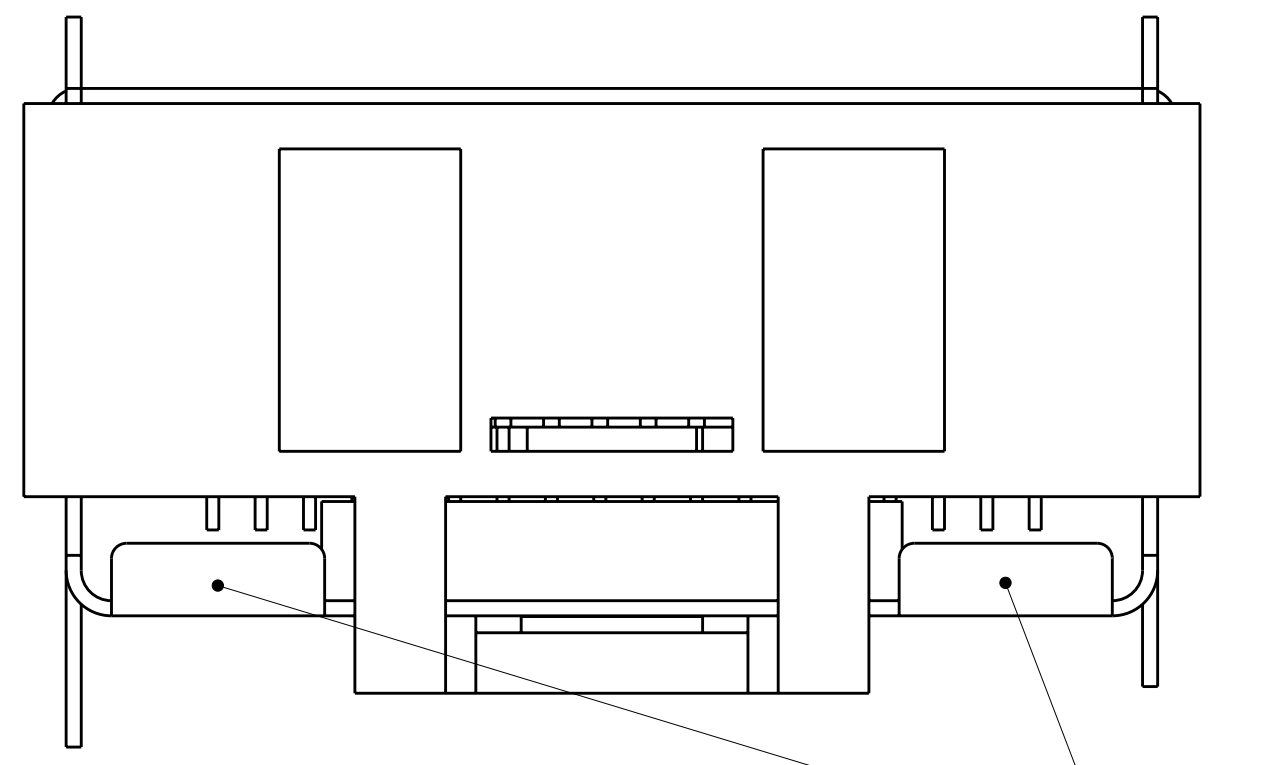
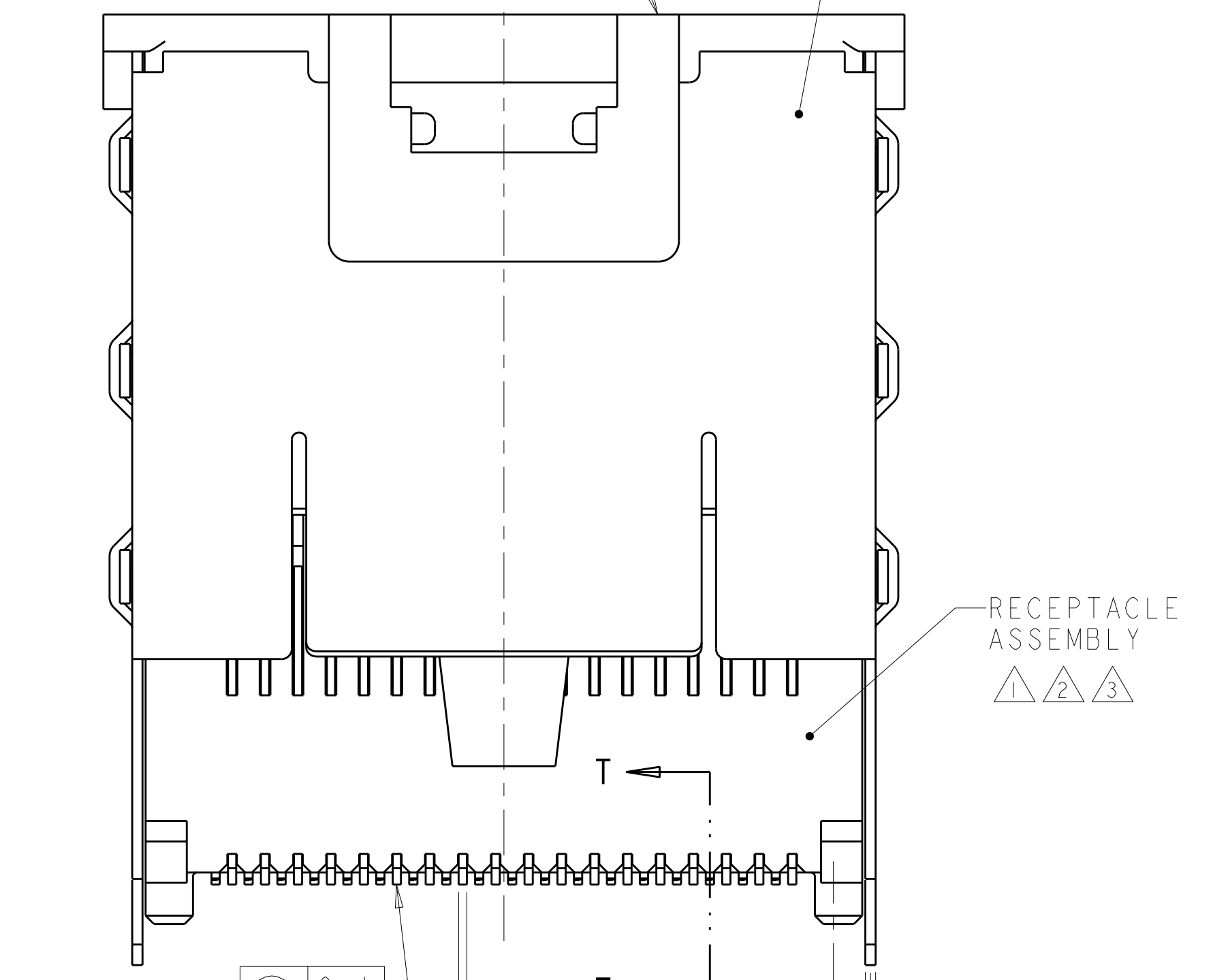


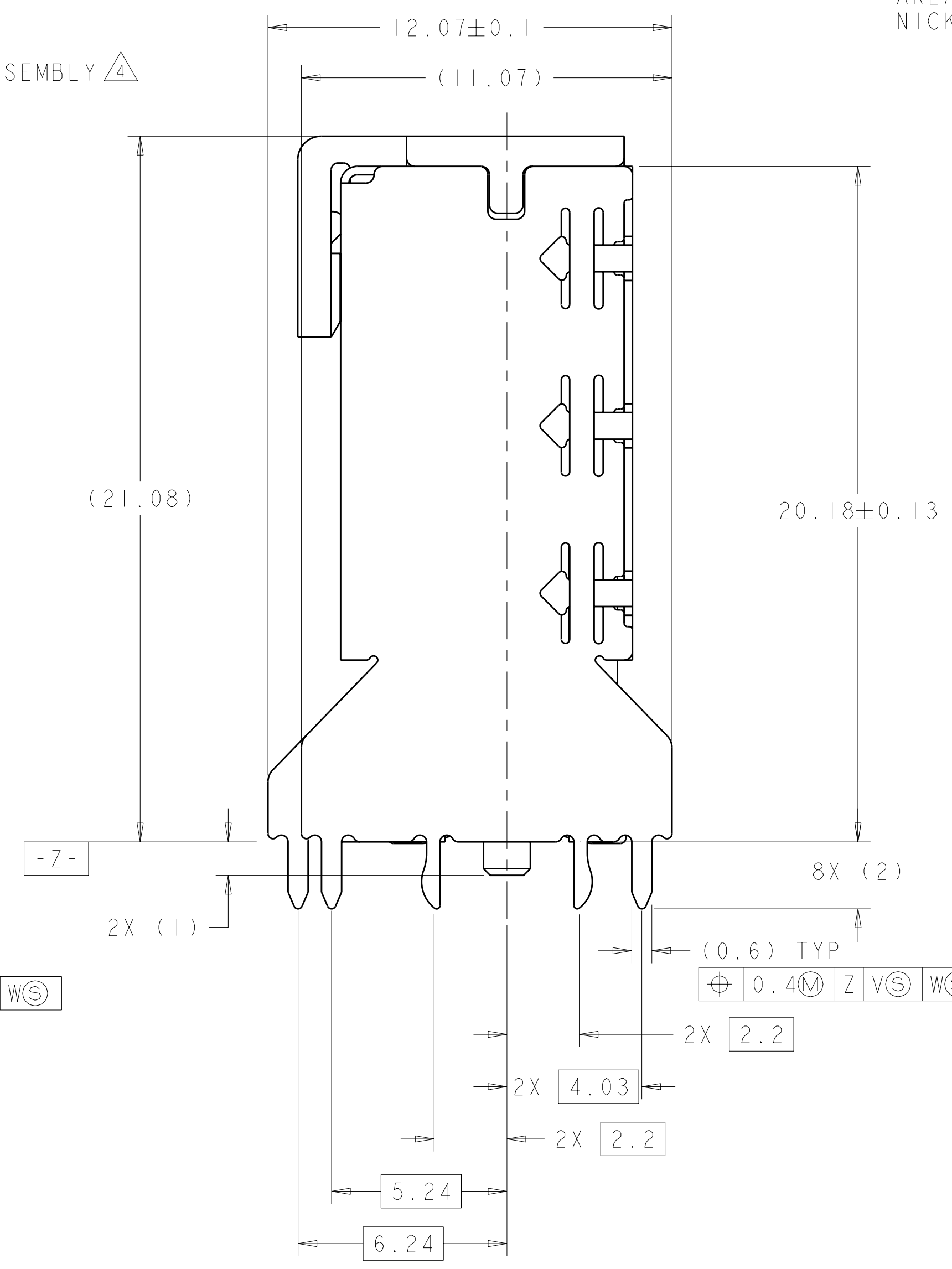
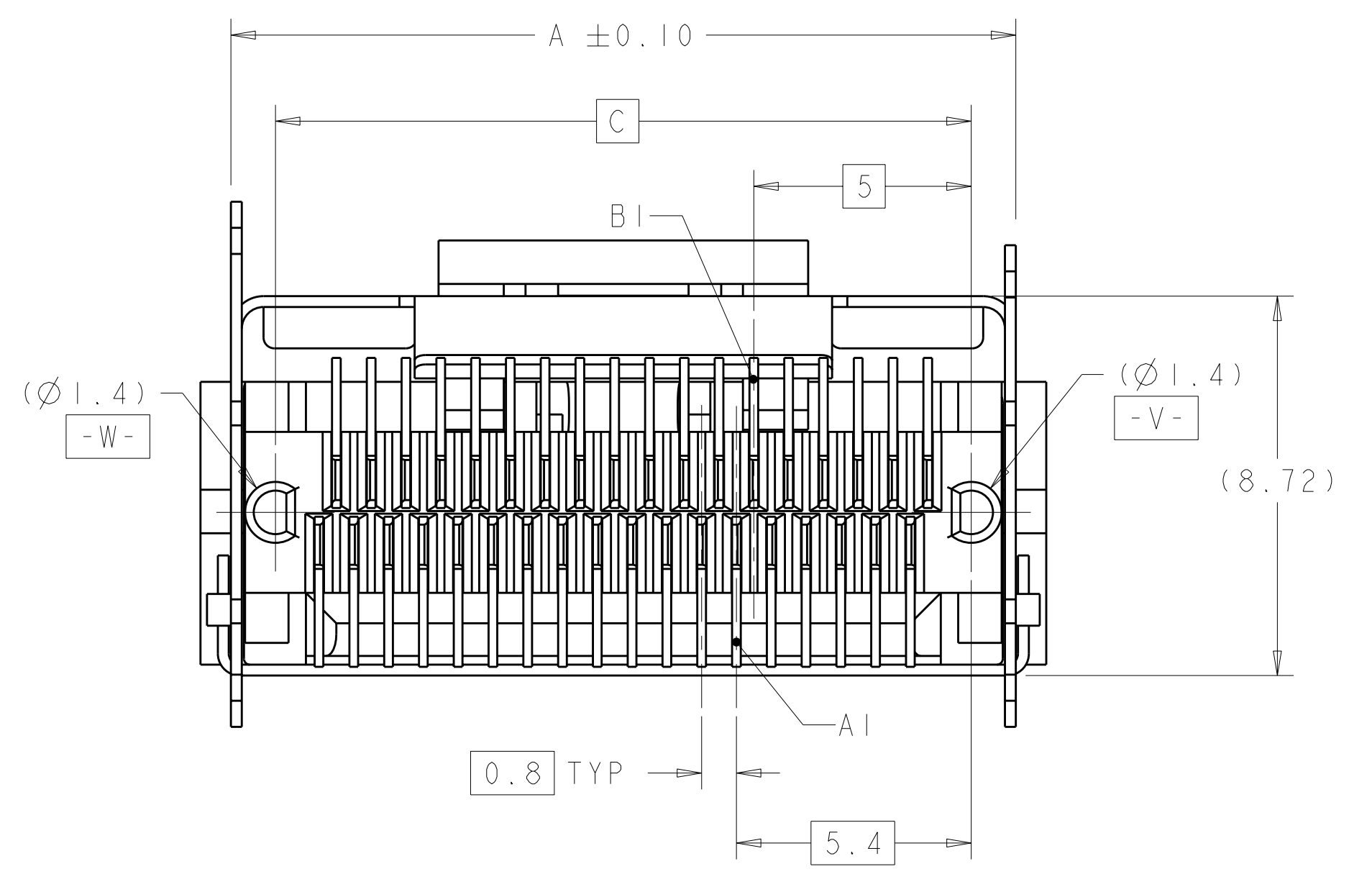
| LOC | | DIST | | REVISIONS | | | |
|-----|----|------|-----|----------------------------|-----------|-----|------|
| GP | 00 | P | LTR | DESCRIPTION | DATE | DWN | APVD |
| | | A | | RELEASED PER ECO-08-011133 | 14MAY2008 | ZMR | DLG |



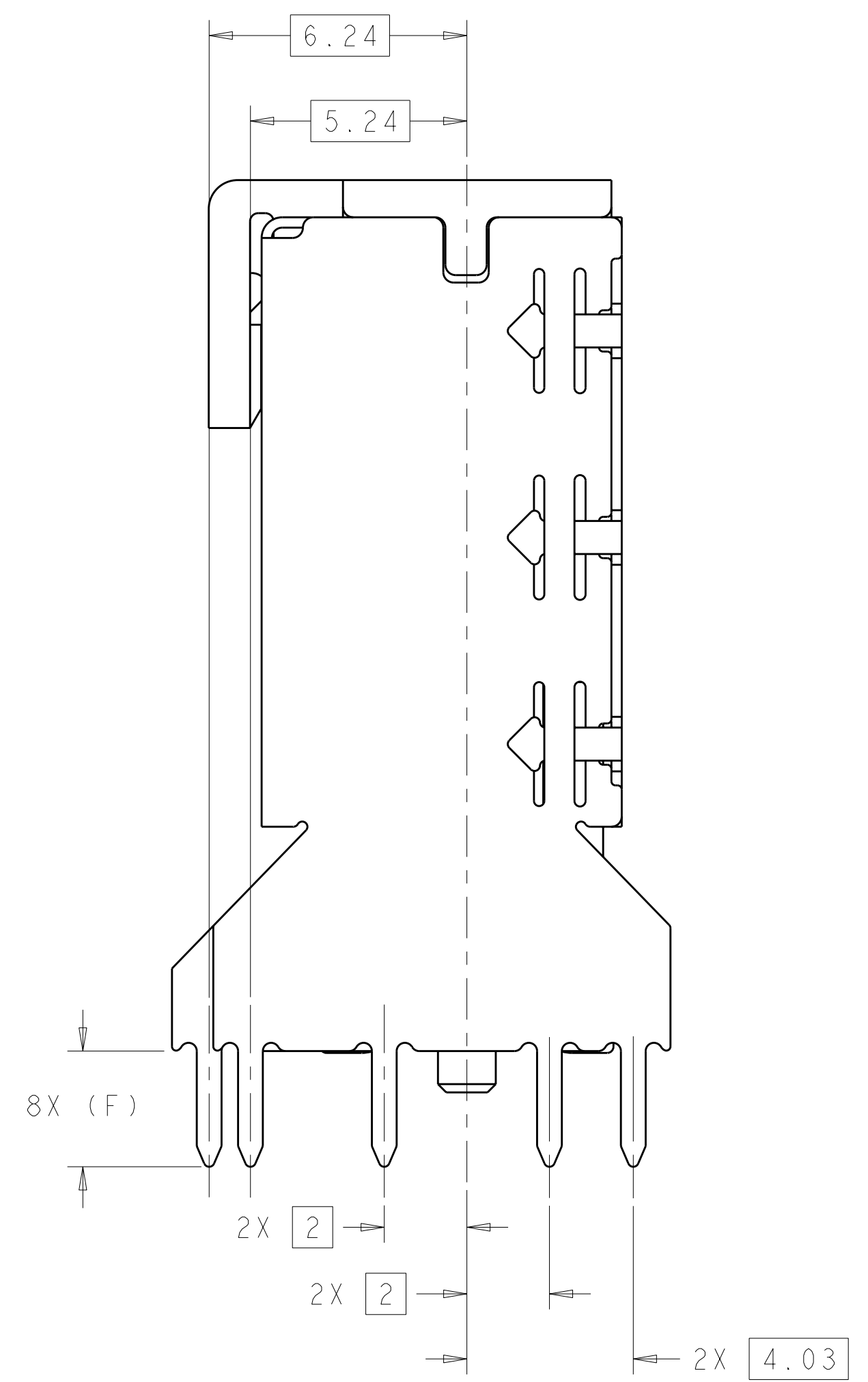
KEYING
 PICK AND PLACE DEVICE
 VERTICAL SHIELD ASSEMBLY



RECEPTACLE ASSEMBLY
 ALL CONTACT SOLDER TAIL SURFACES
 (0.1) ALL CONTACT SOLDER TAIL SURFACES
 (0.2) B PLC
 (0.25) TYP
 (0.4) Z V S W S
 (0.9) TYP

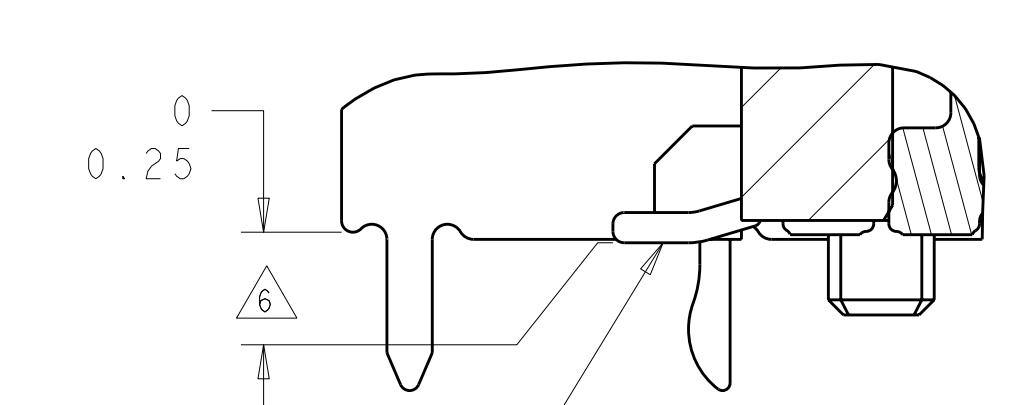


1888174-2 AS SHOWN



1888174-4 AND 1888174-6 AS SHOWN

- 1 MATERIAL: LCP, BLACK.
- 2 MATERIAL: PHOSPHOR BRONZE PER ASTM B 103.
- 3 FINISH: 0.76µm MIN GOLD PLATE PER ASTM B 488, APPLIES TO INTERFACE AREA AND 2.03µm MIN TIN PLATE SOLDER TAILS, ALL OVER 3.81µm MIN NICKEL PLATE PER QQ-N-290.
- 4 MATERIAL: NICKEL-SILVER PER ASTM B 122.
- 5 DATUM AND BASIC DIMENSION ESTABLISHED BY CUSTOMER.
- 6 CONTACT TAILS TO BE 0.25 MAX BELOW OR FLUSH WITH DATUM Z.
- 7 REFER TO CUSTOMER DRAWING 1888020 FOR CONNECTOR DETAILS.
- 8 FINISH: 0.38µm MIN GOLD PLATE PER ASTM B 488, APPLIES TO INTERFACE AREA AND 2.03µm MIN TIN PLATE SOLDER TAILS, ALL OVER 3.81µm MIN NICKEL PLATE PER QQ-N-290.

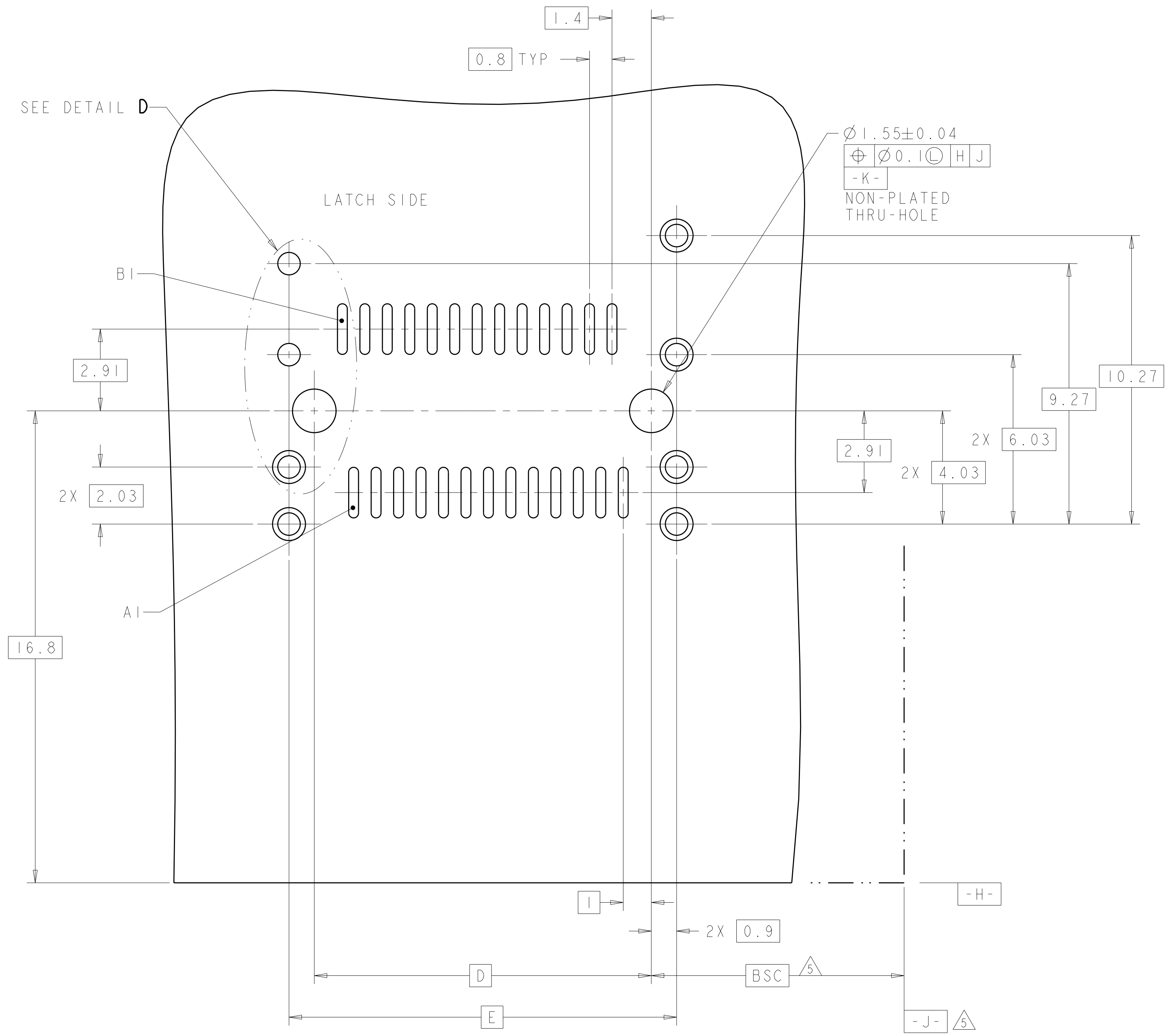


VERTICAL CONTACT
 SECTION T-T
 SCALE 10:1

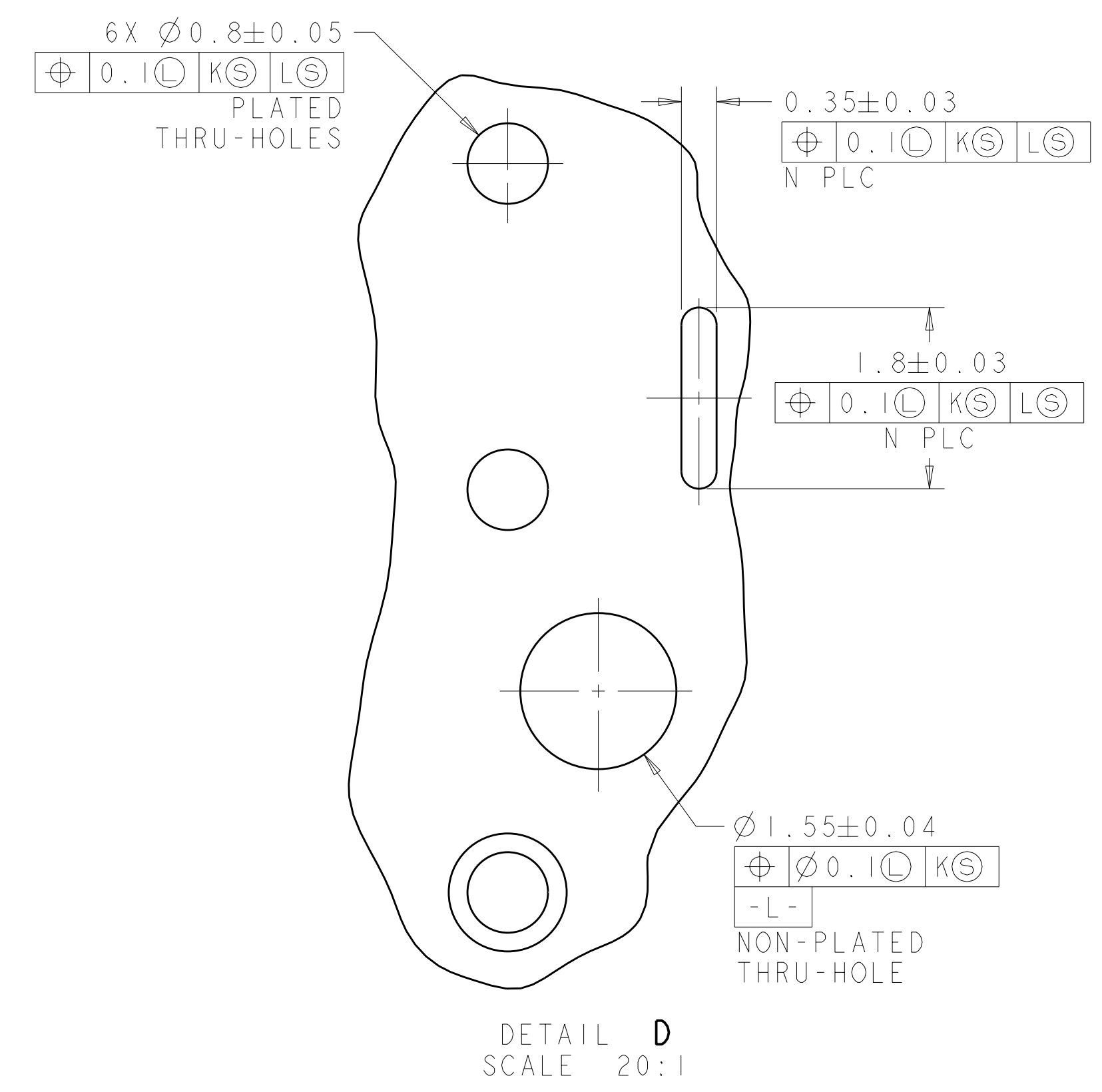
| FINISH | SHIELD TYPE | N | F | E | D | C | B | A | POSN | PART NUMBER |
|-----------|-------------|-----------|------|-----|------|----|-------|----|-----------|-------------|
| | | THRU-HOLE | 36 | 3.5 | 17.8 | 16 | 16 | 36 | 18.05 | 36 |
| THRU-HOLE | 36 | 2.8 | 17.8 | 16 | 16 | 36 | 18.05 | 36 | 1888174-8 | |
| PRESS-FIT | 36 | - | 17.8 | 16 | 16 | 36 | 18.05 | 36 | 1888174-7 | |
| THRU-HOLE | 36 | 3.5 | 17.8 | 16 | 16 | 36 | 18.05 | 36 | 1888174-6 | |
| THRU-HOLE | 36 | 2.8 | 17.8 | 16 | 16 | 36 | 18.05 | 36 | 1888174-4 | |
| PRESS-FIT | 36 | - | 17.8 | 16 | 16 | 36 | 18.05 | 36 | 1888174-2 | |

| | | | | | | | |
|------------------------------------|--|--|--|--|--|---|--|
| DIMENSIONS: mm | | TOLERANCES UNLESS OTHERWISE SPECIFIED: 9 PLC ± 8 PLC ± 5 PLC ± 4 PLC ± ANGLES ± | | DWN M.E. SHIRK 200CT05 CHK R.R. HENRY 200CT05 APVD R.R. HENRY 200CT05 | | Tyco Electronics Harrisburg, PA 17105-3608 | |
| MATERIAL 1 2 4 FINISH SEE TABLE | | WEIGHT - CUSTOMER DRAWING | | NAME EVERCLEAR Mini-SAS VERTICAL INTERNAL RECEPTACLE ASSY WITH DUAL KEYED SHELL | | SIZE CAGE CODE DRAWING NO RESTRICTED TO A 100779 C=1888174 | |
| SCALE 8:1 | | SHEET 1 OF 2 | | REV A | | DATE 14MAY2008 | |

| LOC | DIST | REVISIONS | | | |
|-----|------|-------------|------|-----|------|
| P | LTB | DESCRIPTION | DATE | DWN | APVD |
| GP | 00 | SEE SHEET 1 | - | - | - |
| | | | | | |
| | | | | | |



RECOMMENDED PCB LAYOUT
 SCALE 10:1



| | | | |
|---|--|--|--|
| <small>THIS DRAWING IS UNPUBLISHED. RELEASED FOR PUBLICATION BY TYCO ELECTRONICS CORPORATION. IT IS SUBJECT TO CHANGE WITHOUT NOTICE AND WITHOUT OBLIGATION. SHOULD BE CONTACTED FOR THE LATEST REVISION.</small> | | DWN M. E. SHIRK 200CT05 CHK R. R. HENRY 200CT05 APVD R. R. HENRY 200CT05 | Tyco Electronics Harrisburg, PA 17105-3608 |
| DIMENSIONS: mm | TOLERANCES UNLESS OTHERWISE SPECIFIED: 9 PLC ± 8 PLC ± 5 PLC ± 4 PLC ± ANGLES ± FINISH ± | NAME PRODUCT SPEC 108-2234 APPLICATION SPEC | NAME EVERCLEAR Mini-SAS VERTICAL INTERNAL RECEPTACLE ASSY WITH DUAL KEYED SHELL |
| MATERIAL | FINISH | WEIGHT | RESTRICTED TO |
| - | - | - | - |
| CUSTOMER DRAWING | | SCALE 8:1 | SHEET 2 OF 2 REV A |