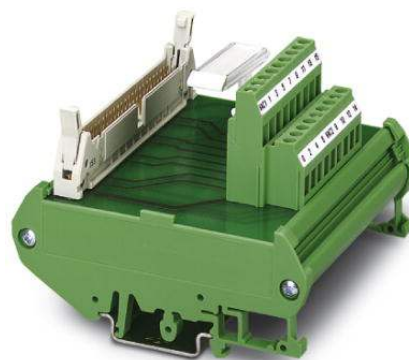


FLKM 50/16/SLC500

Order No.: 2293488



<http://eshop.phoenixcontact.de/phoenix/treeViewClick.do?UID=2293488>

VARIOFACE termination board, to transmit max. 16 channels, only in connection with FLKM 50-PA-SLC 500 OUT/2 A



Commercial data

| | |
|--------------------------|--------------------|
| EAN | 4017918108885 |
| Pack | 1 pcs. |
| Customs tariff | 85369010 |
| Weight/Piece | 0.1723 KG |
| Catalog page information | Page 165 (IF-2007) |

Product notes

WEEE/RoHS-compliant since:
07/12/2006



<http://www.download.phoenixcontact.com>
Please note that the data given here has been taken from the online catalog. For comprehensive information and data, please refer to the user documentation. The General Terms and Conditions of Use apply to Internet downloads.

Technical data

General data

| | |
|---|-----------|
| Nominal voltage U_N | < 50 V AC |
| | 60 V DC |
| Max. current carrying capacity per branch | 1 A |

| | |
|---|-----------------------|
| Max. total current of voltage supply | 2 A (per channel) |
| Width | 90 mm |
| Height | 68 mm |
| Depth | 90 mm |
| Status display | No |
| Ambient temperature (operation) | -20 °C ... 50 °C |
| Ambient temperature (storage/transport) | -20 °C ... 70 °C |
| Test voltage | 500 V (50 Hz, 1 min.) |
| Mounting position | Any |
| Standards/regulations | IEC 60664 |
| | DIN EN 50178 |
| | IEC 62103 |
| Pollution degree | 2 |
| Surge voltage category | II |

Connection data

| | |
|--|--|
| Connection 1 | Field level |
| Connection in acc. with standard | IEC / EN |
| Type of connection | Screw connection |
| Conductor cross section solid min. | 0.2 mm ² |
| Conductor cross section solid max. | 4 mm ² |
| Conductor cross section stranded min. | 0.2 mm ² |
| Conductor cross section stranded max. | 2.5 mm ² |
| Conductor cross section AWG/kcmil min. | 24 |
| Conductor cross section AWG/kcmil max | 12 |
| Stripping length | 8 mm |
| Screw thread | M3 |
| Connection 2 | Control system level |
| Number of connections | 1 |
| Type of connection | Flat-ribbon cable plug connector in acc. with IEC 60603-13 |
| Number of positions | 50 |

Certificates / Approvals

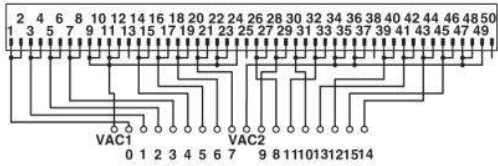


Certification

CUL, GOST, UL

Diagrams/Drawings

Circuit diagram



Connection scheme FLKM 50/16/SLC500

Address

PHOENIX CONTACT Deutschland GmbH
Flachmarktstr. 8
32825 Blomberg, Germany
Phone +49 5235 3 12000
Fax +49 5235 3 41200
<http://www.phoenixcontact.de>



© 2010 Phoenix Contact
Technical modifications reserved;