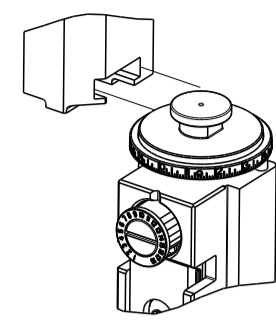


| PART NUMBER | REVISION | DESCRIPTION | FEED TYPE |
|-------------|----------|---------------------------------|-----------|
| 2151426-2 | J | FINE CRIMP HEIGHT ADJUST | PNEUMATIC |
| 7-2151426-2 | J | PNEUMATIC AND CRIMP TOOLING KIT | PNEUMATIC |
| 7-2151426-7 | J | CRIMP TOOLING KIT | - |

ATLANTIC VERSION TERMINATOR INTERFACE ADAPTER



| APPLICATOR DATA | | |
|-----------------|----------------|------|
| CRIMP | SIZE | TYPE |
| WIRE | 3.43 mm [.135] | F |
| INSUL | 5.33 mm [.210] | O |

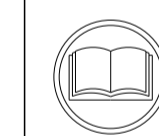
APPLICATOR INSTRUCTIONS
408-35042

| TERMINAL DATA: TE TERMINAL TE CRIMP SPECIFICATION | | | |
|---|------------------------------|-------------|-------------|
| TERMINAL NAME: MALE TYPE XII CONTACT | | | |
| WIRE STRIP LENGTH | INSULATION DIAMETER RANGE | | |
| 6.35-7.93 mm [.250-.312 IN] | Ø3.56-4.19 mm [.140-.165 IN] | | |
| TERMINAL APPLICATION SPECIFICATION | 114-10005 | | |
| TERMINALS APPLIED | | | |
| TE TERMINAL | TE TERMINAL | TE TERMINAL | TE TERMINAL |
| 66740-9 | 66255-5 | 1-66255-2 | 66256-9 |
| 1-66740-1 | 66255-6 | 66256-4 | 172740-2 |
| 1-66740-2 | 66255-8 | 66256-5 | 1-172740-1 |
| 2-66740-0 | 66255-9 | 66256-7 | 1-172740-2 |
| 66740-5 | | | |

| TERMINAL DATA: TE TERMINAL TE CRIMP SPECIFICATION | | | |
|---|------------------------------|-------------|-------------|
| TERMINAL NAME: MALE TYPE XII CONTACT | | | |
| WIRE STRIP LENGTH | INSULATION DIAMETER RANGE | | |
| 6.35-7.93 mm [.250-.312 IN] | Ø3.56-4.19 mm [.140-.165 IN] | | |
| TERMINAL APPLICATION SPECIFICATION | | | |
| TERMINALS APPLIED | | | |
| TE TERMINAL | TE TERMINAL | TE TERMINAL | TE TERMINAL |
| 66740-9 | 66255-5 | 1-66255-2 | 66256-9 |
| 1-66740-1 | 66255-6 | 66255-4 | 172740-2 |
| 1-66740-2 | 66255-8 | 66256-5 | 1-172740-1 |
| 2-66740-0 | 66255-9 | 66256-7 | 1-172740-2 |
| 66740-5 | | | |

| WIRE SIZE | CRIMP HEIGHT mm [INCH] | CRIMP HEIGHT REFERENCE SETTING |
|-----------|----------------------------|--------------------------------|
| 12 AWG | 2.51+/-0.08 [.099+/- .003] | 4.3 |
| 14 AWG | 2.36+/-0.08 [.093+/- .003] | 5.9 |
| 16 AWG | 2.16+/-0.08 [.085+/- .003] | 7.8 |

| WIRE SIZE | CRIMP HEIGHT mm [INCH] | CRIMP HEIGHT REFERENCE SETTING |
|-----------|----------------------------|--------------------------------|
| 2.50mm2 | 2.42+/-0.08 [.095+/- .003] | 5.4 |



- 1 RECOMMENDED SPARE PARTS
- 2 REFER TO SUPPLIED INSTRUCTION SHEET FOR CLEANING, LUBRICATION AND STORAGE OF APPLICATOR.
- 3 APPLY PART NUMBER 2-23419-6 LOCTITE TO THREADS OF ITEM 242.
- 4 CRIMP HEIGHT REFERENCE SETTING WAS THE SETTING USED WHEN THE APPLICATOR WAS QUALIFIED AT THE FACTORY. ADJUSTMENT MAY BE NECESSARY WHEN RUNNING APPLICATOR IN THE FIELD.
- 5 TERMINAL PITCH NOT COMPATIBLE WITH MECHANICAL FEED.
- 6 TERMINAL LUBRICANT IS RECOMMENDED.
7. UNLESS SPECIFIED OTHERWISE TORQUE VALUES SHALL BE USED PER DOCUMENT, 101-35000.
- 8 THIS CRIMP PARAMETER IS PROVIDED TO MEET A CUSTOM AND UNIQUE CUSTOMER REQUIREMENT. IT HAS BEEN EVALUATED AND IS CONDITIONALLY SPECIFIED BY TE CONNECTIVITY. THIS CUSTOMIZED CRIMP PARAMETER IS NOT LISTED AS AN APPROVED APPLICATION WITHIN A TE CONNECTIVITY APPLICATION SPECIFICATION; HOWEVER, IT HAS BEEN VALIDATED ACCORDING TO TE CONNECTIVITY SPECIFICATIONS 109-18079 (TEST GROUP 1) AND 114-18022. **TE CONNECTIVITY EXPRESSLY DISCLAIMS ANY AND ALL WARRANTIES THAT THE PRODUCT WILL PERFORM SIMILARLY TO VALIDATED AND APPROVED APPLICATIONS, AS STATED WITHIN TE CONNECTIVITY APPLICATION SPECIFICATIONS, INCLUDING BUT NOT LIMITED TO IMPLIED WARRANTIES OF MERCHANTABILITY OR FITNESS FOR PARTICULAR PURPOSE.** AS SUCH, IT IS HIGHLY RECOMMENDED THAT THE CUSTOMER PERFORM FURTHER DETAILED EVALUATION TO ASSESS PRODUCT PERFORMANCE IN THE SPECIFIC APPLICATION.

***WARNING**
ON INSTALLATION, SET WIRE DISC TO CRIMP HEIGHT REFERENCE SETTING FOR LARGEST WIRE SIZE. CRIMP HEIGHT REFERENCE SETTINGS GREATER THAN THE VALUE SHOWN MAY CAUSE DAMAGE TO THE CRIMP TOOLING, REFER TO THE INSTRUCTION SHEET FOR PROPER SETUP AND ADJUSTMENTS.

| LOC | DIST | REVISIONS | | | | | |
|-----|------|-----------|-----|---------------|-----------|-----|------|
| A | 66 | P | LTN | DESCRIPTION | DATE | OWN | APVD |
| | | G1 | | ECR-20-003838 | 13MAR2020 | FZ | RK |
| | | G2 | | ECR-20-008218 | 09JUN2020 | JWC | TE |
| | | H | | ECR-22-135710 | 11APR2022 | ROY | TLE |
| | | J | | ECR-23-165307 | 02FEB2023 | LG | JAH |

| | | | | | | |
|---|-----|-----|-------------|-------------------------------------|-------------------------------|---|
| - | 1 | 1 | 2119641-1 | FEED CAM, AIR FEED | 248 | |
| - | 1 | 1 | 2119082-7 | CAM, SNAIL, INSULATION ADJUSTMENT | 244 | |
| - | 1 | 1 | 2079764-1 | WASHER, WAVE SPRING, CREST-TO-CREST | 243 | |
| - | 1 | 1 | 2119083-1 | RETAINER, INSULATION DIAL | 242 | |
| - | 1 | 1 | 7-18023-7 | SCR, SKT HD CAP M3 X 4.0 | 241 | |
| - | 1 | 1 | 2844940-6 | AIR FEED MODULE | 238 | |
| - | REF | REF | 994970-2 | COUNTER, MAGNETIC | 164 | |
| - | 1 | 1 | 2119955-1 | ASSY, LUBRICATOR, SIDE FEED | 113 | |
| - | 1 | 1 | 2844908-1 | SCREW, LOCKING | 99 | |
| - | 1 | 1 | 2844907-1 | POST, LOCKING | 98 | |
| - | 1 | 1 | 455888-5 | SPACER, CRIMPER | 82 | |
| - | 2 | 2 | 2079383-4 | SCR, BHSC, RoHS (M4 X 8) | 79 | |
| - | 1 | 1 | 1803096-1 | EXTENSION PLATE | 78 | |
| - | 1 | 1 | 1-22278-0 | SPRING, COMPRESSION | 77 | |
| - | 1 | 1 | 854769-1 | HOLDER, INS | 74 | |
| - | 1 | 1 | 1803607-3 | DOCUMENTATION PACKAGE | 71 | |
| - | 1 | 1 | 2119791-6 | DEPRESSOR, WIRE | 70 | |
| - | 1 | 1 | 2119943-1 | WASHER, SPACER | 69 | |
| - | 1 | 1 | 2119740-1 | TAG, IDENTIFICATION | 67 | |
| - | 2 | 2 | 2168078-1 | SCREW, DRIVE, RH, RoHS, 2 x .188 | 66 | |
| - | 1 | 1 | 2168083-2 | SCR, SKT HD CAP, RoHS, M4 X 8.0 | 60 | |
| - | 1 | 1 | 5-18022-5 | SCR, HEX HD CAP, M4 X 6.0 | 59 | |
| - | 1 | 1 | 21028-2 | PIN, SLOTTED SPRING .062 X .250 | 58 | |
| - | 1 | 1 | 1-1338683-1 | FEED PAWL | 56 | |
| - | 4 | 4 | 2168083-3 | SCR, SKT HD CAP, RoHS, M4 X 12.0 | 54 | |
| - | 2 | 2 | 2168083-3 | SCR, SKT HD CAP, RoHS, M4 X 12.0 | 53 | |
| - | 1 | 1 | 5018030-1 | NUT, HEX, REG, RoHS, M3 | 52 | |
| - | 1 | 1 | 811242-6 | BUMPER, HOLD DOWN | 51 | |
| - | 1 | 1 | 690753-2 | SPACER, TONKER | 50 | |
| - | 1 | 1 | 18023-9 | SCR, SKT HD CAP M4 X 6.0 | 49 | |
| - | 1 | 1 | 1803583-9 | APPLICATOR BASIC ASSEMBLY, SF | 46 | |
| - | 1 | 1 | 1803515-1 | RAM ASSEMBLY, SF ATLANTIC | 44 | |
| - | 1 | 1 | 1803602-1 | SCR, BHSC, RoHS (M8 X 25) | 41 | |
| - | 1 | 1 | 3-1752356-3 | SUPPORT, TERMINAL | 34 | |
| - | 2 | 2 | 2079383-8 | SCR, BHSC, RoHS (M4 X 16) | 33 | |
| - | 2 | 2 | 2-2844962-4 | SPACER, CYLINDRICAL, STRIP GUIDE | 30 | |
| - | 1 | 1 | 2844992-1 | ASSEMBLY, STRIP GUIDE | 29 | |
| - | 1 | 1 | 1-455888-0 | SPACER, CRIMPER | 28 | |
| - | 1 | 1 | 1320928-4 | STRIP GUIDE | 24 | |
| - | 1 | 1 | 2168083-2 | SCR, SKT HD CAP, RoHS, M4 X 8.0 | 21 | |
| - | 2 | 2 | 1-18028-2 | WASHER, FLAT, REG M4 | 20 | |
| - | 1 | 1 | 2119533-1 | STRIPPER, SIDE FEED | 19 | |
| - | 1 | 1 | 2119806-1 | INSERT, SHEAR | 13 | |
| - | 1 | 1 | 4-22280-9 | SPRING, COMPRESSION | 12 | |
| - | 1 | 1 | 1-356885-5 | STOP, SHEAR | 11 | |
| - | 1 | 1 | 2-2119805-1 | SHEAR HOLDER, FRONT | 10 | |
| - | 1 | 1 | 454276-5 | FLOATING SHEAR, FRONT | 9 | |
| - | 1 | 2 | 1 | 2-2391968-5 | ANVIL, COMBINATION | 8 |
| - | 1 | 1 | 5-240641-9 | SPACER | 7 | |
| - | - | - | - | - | 6 | |
| - | 1 | 1 | 1-2119780-3 | DEPRESSOR, SHEAR | 5 | |
| - | 1 | 1 | 4-238011-5 | BLOCK, CRIMPER SPACER | 4 | |
| - | 1 | 2 | 1 | 7-2119784-9 | CRIMPER, INSULATION O PREMIUM | 3 |
| - | - | - | - | - | 2 | |
| - | 1 | 2 | 1 | 2-1803767-5 | CRIMPER, WIRE F | 1 |
| - | - | - | - | - | 0 | |

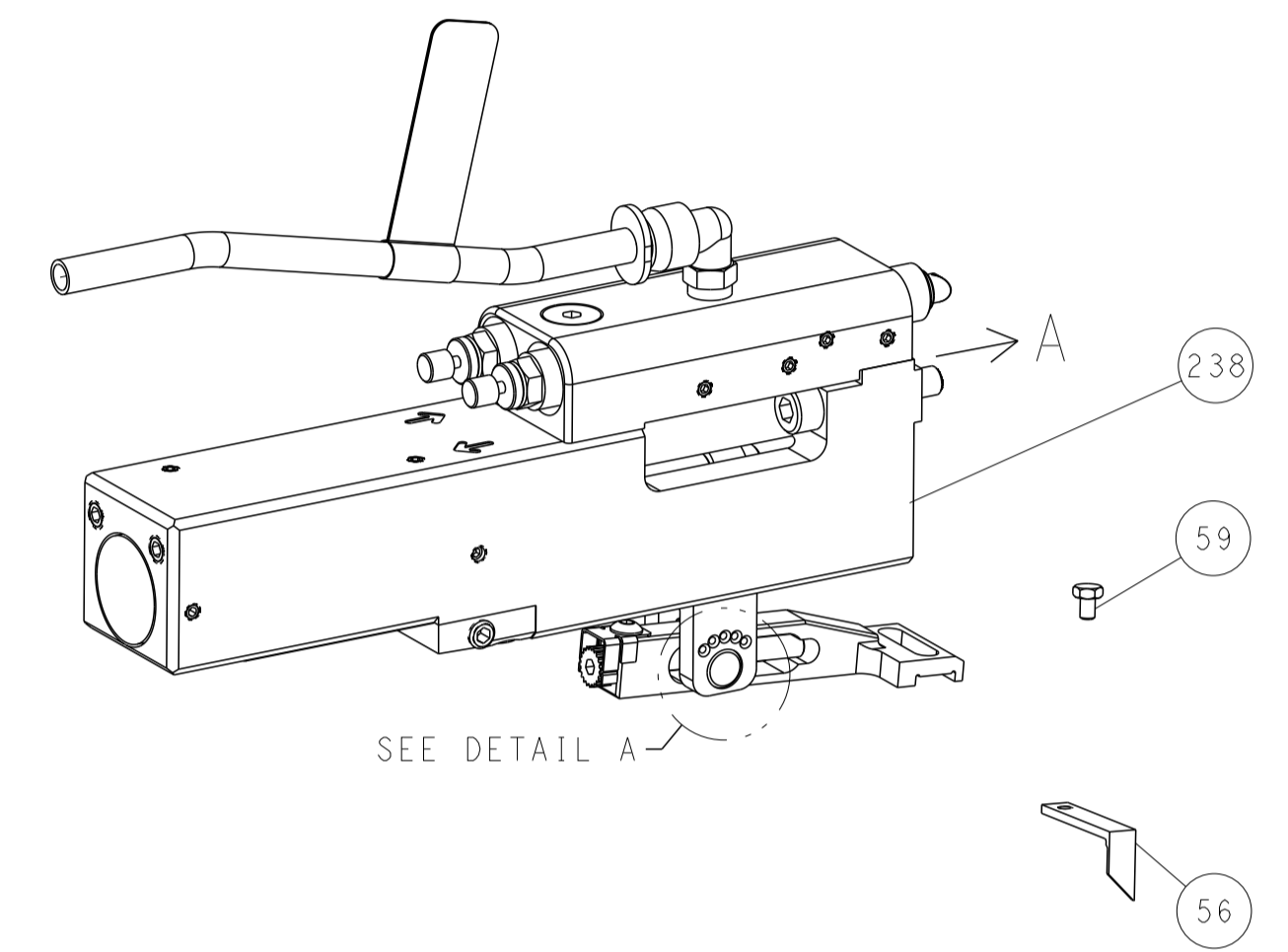
| DIMENSIONS: | | TOLERANCES UNLESS OTHERWISE SPECIFIED: | | MATERIAL: | | FINISH: | | WEIGHT: | | SCALE: | | SHEET: | | REV: | |
|-----------------|---------|--|---------|---------------------------|---------|----------------------------|--------|----------|-------|-----------|-----|--------|----|------|----|
| mm | 0 PLC ± | 1 PLC ± | 2 PLC ± | 3 PLC ± | 4 PLC ± | ANGLES | FINISH | WEIGHT | SCALE | SHEET | REV | NO | NO | NO | NO |
| APPLICATOR DATA | | TE CONNECTIVITY | | HARRISBURG, PA 17105-3608 | | OCEAN SIDE FEED APPLICATOR | | A1 00779 | | C=2151426 | | 1 OF 4 | | J | |

ATLANTIC VERSION
Shown on sheets 1 of 4 & 2 of 4
(Pacific version shown on sheets 3 of 4 & 4 of 4)

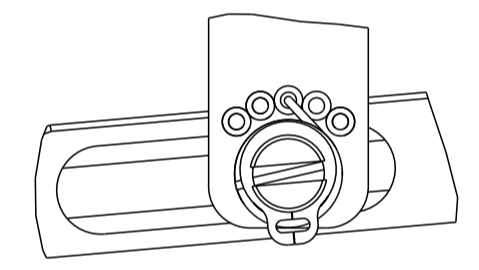
| LOC | DIST | REVISIONS | | | | | |
|-----|------|-----------|-----|-------------|------|-----|------|
| | | P | LTN | DESCRIPTION | DATE | OWN | APVD |
| A | 66 | - | - | SEE SHEET 1 | - | - | - |

FEED TYPE

PNEUMATIC

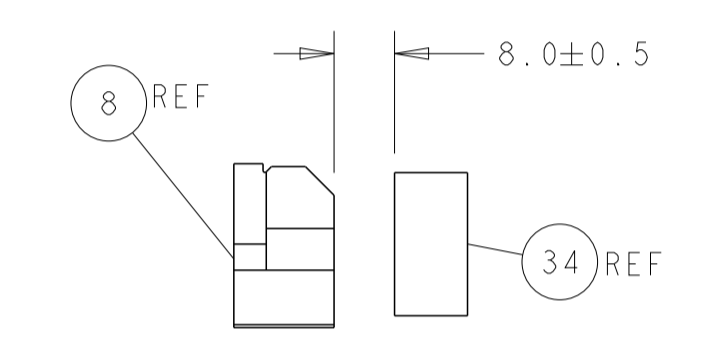
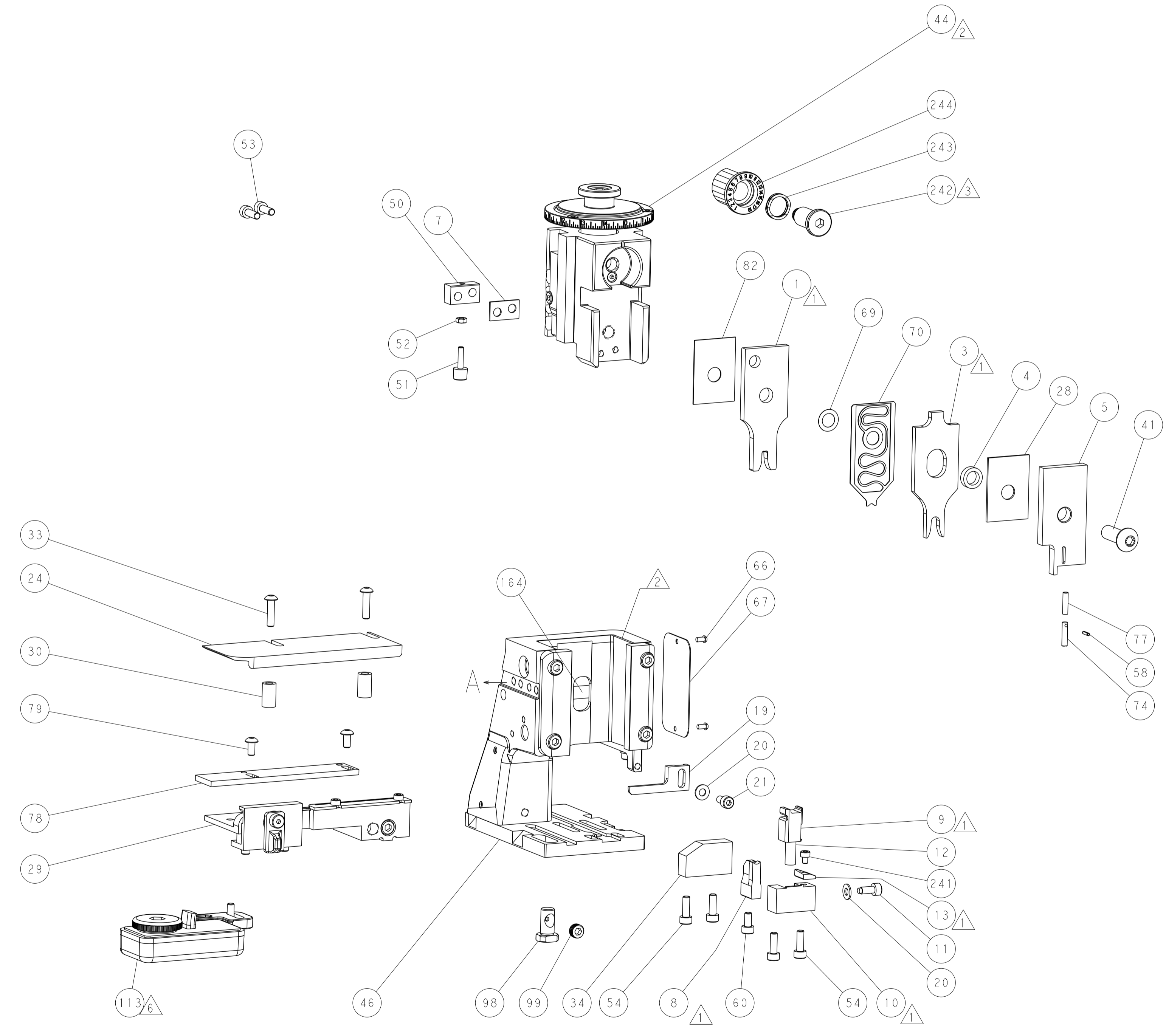
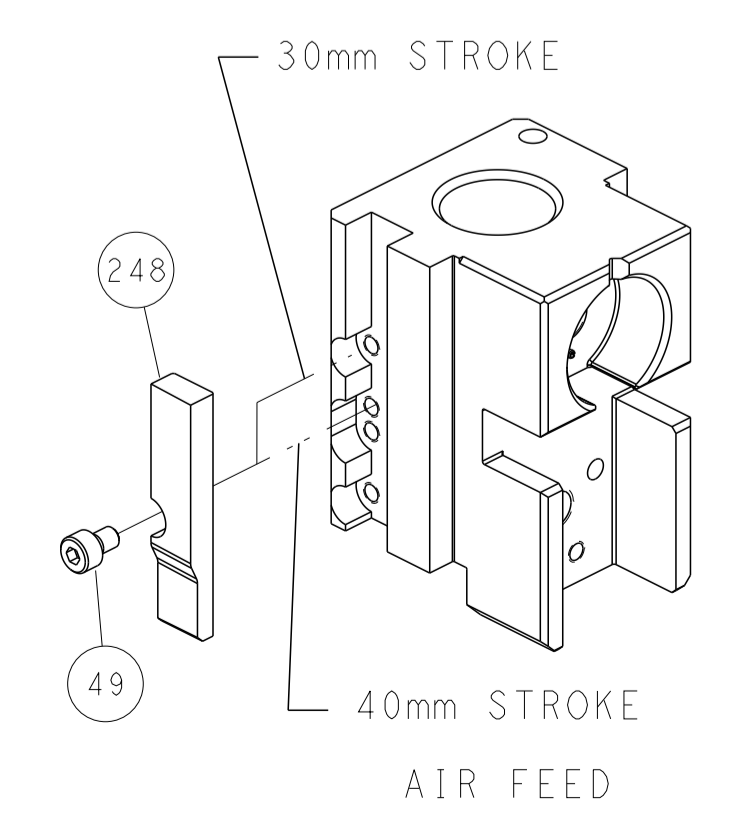


FEED SPRING SETTING POSITION
(SHOWN FROM REAR SIDE)

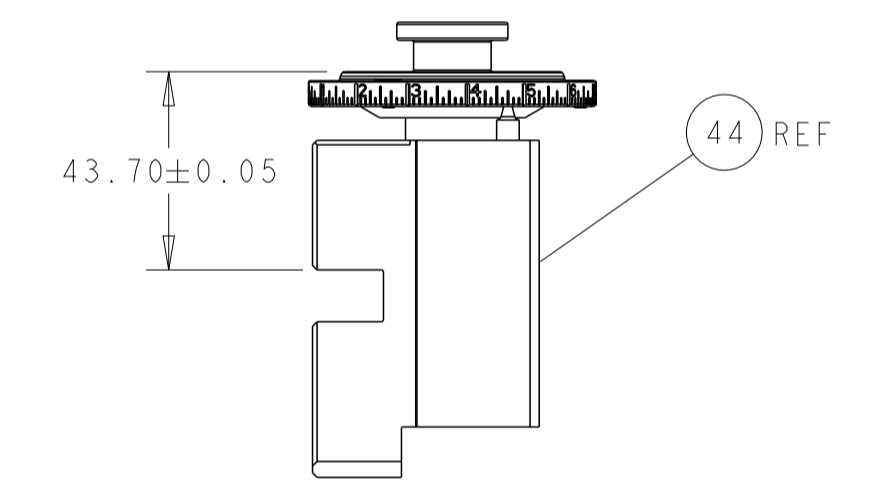


DETAIL A

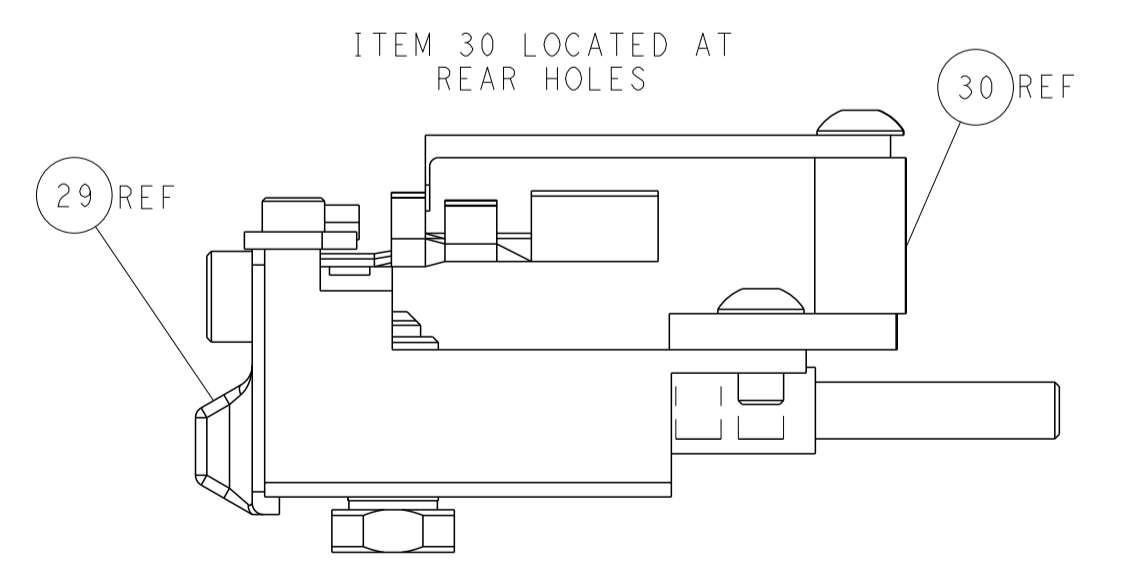
CAM POSITION



TERMINAL SUPPORT LOCATION



RAM SET-UP



FEED TRACK POSITION
GUIDE BY INSULATION BARREL

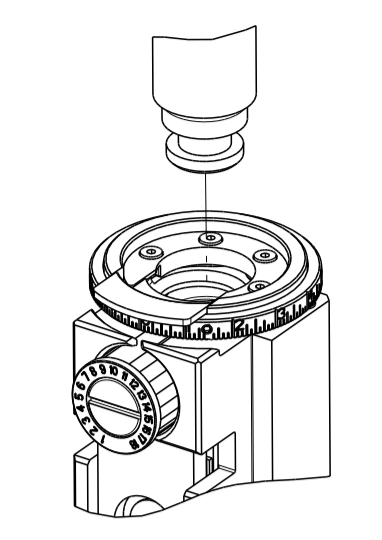
ATLANTIC VERSION
 Shown on sheets 1 of 4 & 2 of 4
 (Pacific version shown on sheets 3 of 4 & 4 of 4)

| | | | |
|---|--|-------------------------------|--|
| <small>THIS DRAWING IS UNPUBLISHED. RELEASED FOR PUBLICATION. IT IS THE PROPERTY OF TYCO ELECTRONICS CORPORATION. IT IS TO BE USED ONLY FOR THE PURPOSES AND IN THE QUANTITIES SPECIFIED IN THE ORDER. IT IS TO BE RETURNED TO TYCO ELECTRONICS CORPORATION IF NOT SO USED.</small> | | DWN Y. YIN 04JAN2013 | TE Connectivity Harrisburg, PA 17105-3608 |
| DIMENSIONS: mm | | CHK G. BAILEY 04JAN2013 | NAME Ocean Side Feed Applicator |
| TOLERANCES UNLESS OTHERWISE SPECIFIED: 0 PLC ± 1 PLC ± 2 PLC ± 3 PLC ± 4 PLC ± ANGLES ± FINISH ± | | APVD S. XI 04JAN2013 | SIZE A1 |
| MATERIAL: | | WEIGHT: | CAGE CODE 00779 |
| DRAWING NO 00779 | | SCALE 1:2 | SHEET 2 OF 4 REV J |

THIS DRAWING IS UNPUBLISHED. RELEASED FOR PUBLICATION
COPYRIGHT 20 BY TYCO ELECTRONICS CORPORATION. ALL RIGHTS RESERVED.

Table with 4 columns: PART NUMBER, REVISION, DESCRIPTION, FEED TYPE. Row 1: 2-2151426-2, J, FINE CRIMP HEIGHT ADJUST, PNEUMATIC. Row 2: 7-2151426-7, J, CRIMP TOOLING KIT, -

PACIFIC VERSION TERMINATOR INTERFACE ADAPTER



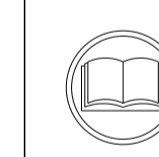
APPLICATOR DATA table with columns: CRIMP, SIZE, TYPE. Values: CRIMP WIRE 3.43 mm [.135], TYPE F; INSUL 5.33 mm [.210], TYPE O. Below is APPLICATOR INSTRUCTIONS 408-35042 with a book icon.

Terminal Data table for TE TERMINAL TE CRIMP SPECIFICATION. Includes columns for Terminal Name, Wire Strip Length (6.35-7.93 mm [.250-.312 IN]), and Insulation Diameter Range (3.56-4.19 mm [.140-.165 IN]).

Terminal Data table for TE TERMINAL TE CRIMP SPECIFICATION. Includes columns for Terminal Name, Wire Strip Length (6.35-7.93 mm [.250-.312 IN]), and Insulation Diameter Range (3.56-4.19 mm [.140-.165 IN]).

WIRE SIZE table with columns: WIRE SIZE, CRIMP HEIGHT mm [INCH], CRIMP HEIGHT REFERENCE SETTING. Values: 12 AWG, 2.51 +/- 0.08 [.099 +/- .003], 4.3; 14 AWG, 2.36 +/- 0.08 [.093 +/- .003], 5.9; 16 AWG, 2.16 +/- 0.08 [.085 +/- .003], 7.8.

WIRE SIZE table with columns: WIRE SIZE, CRIMP HEIGHT mm [INCH], CRIMP HEIGHT REFERENCE SETTING. Values: 2.50mm2, 2.42 +/- 0.08 [.095 +/- .003], 5.4.



- 1 RECOMMENDED SPARE PARTS
2 REFER TO SUPPLIED INSTRUCTION SHEET FOR CLEANING, LUBRICATION AND STORAGE OF APPLICATOR.
3 APPLY PART NUMBER 2-23419-6 LOCTITE TO THREADS OF ITEM 242.
4 CRIMP HEIGHT REFERENCE SETTING WAS THE SETTING USED WHEN THE APPLICATOR WAS QUALIFIED AT THE FACTORY. ADJUSTMENT MAY BE NECESSARY WHEN RUNNING APPLICATOR IN THE FIELD.
5 TERMINAL PITCH NOT COMPATIBLE WITH MECHANICAL FEED.
6 TERMINAL LUBRICANT IS RECOMMENDED.
7. UNLESS SPECIFIED OTHERWISE TORQUE VALUES SHALL BE USED PER DOCUMENT, 101-35000.

*WARNING ON INSTALLATION, SET WIRE DISC TO CRIMP HEIGHT REFERENCE SETTING FOR LARGEST WIRE SIZE. CRIMP HEIGHT REFERENCE SETTINGS GREATER THAN THE VALUE SHOWN MAY CAUSE DAMAGE TO THE CRIMP TOOLING, REFER TO THE INSTRUCTION SHEET FOR PROPER SETUP AND ADJUSTMENTS.

PACIFIC VERSION Shown on sheets 3 of 4 & 4 of 4 (Atlantic version shown on sheets 1 of 4 & 2 of 4)

Table with columns: REVISIONS, DATE, DWN, APVD. Row 1: P, LYN, SEE SHEET 1, - , - , -

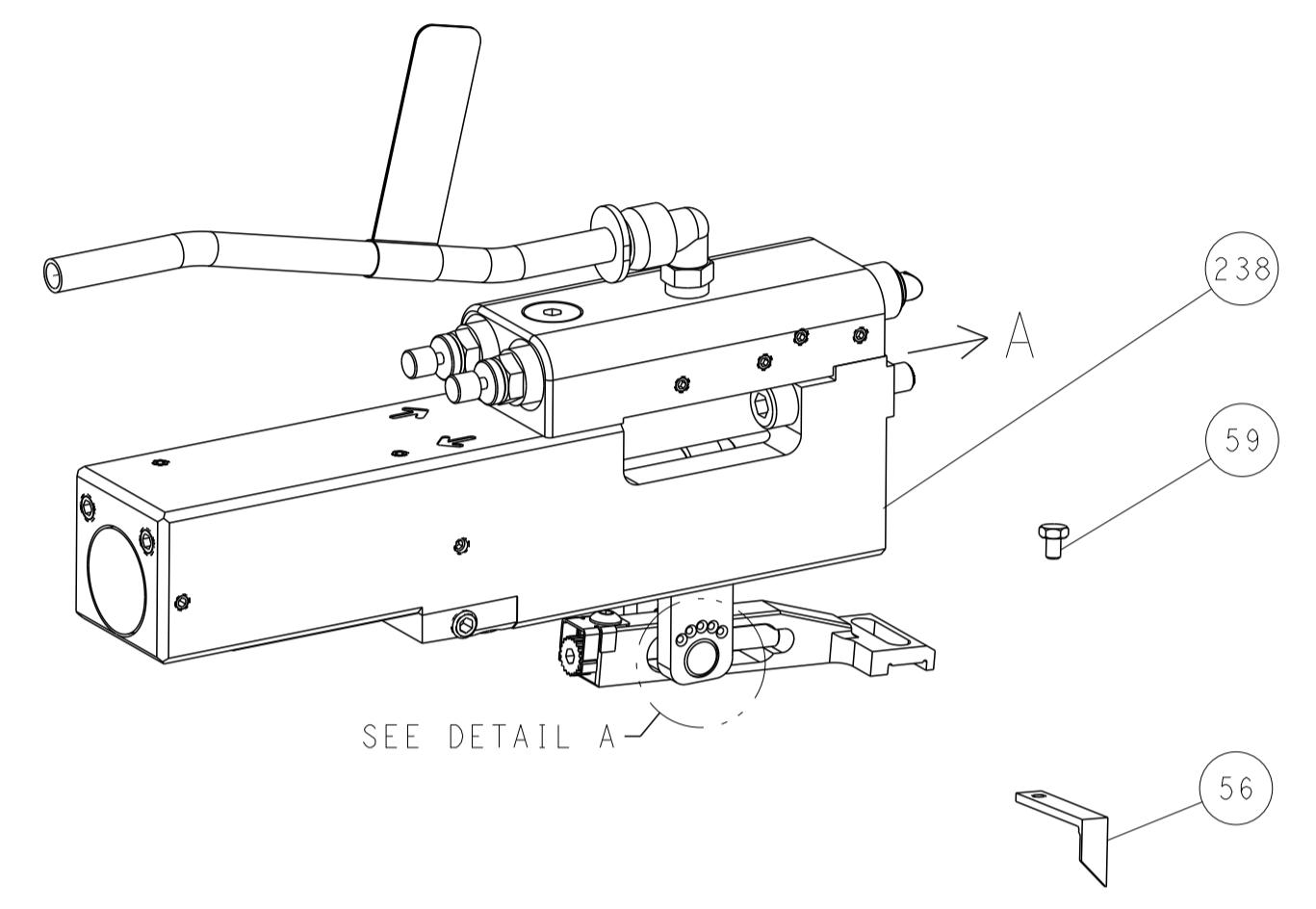
Main assembly drawing table with columns: QUANTITY, PART NO, DESCRIPTION, ITEM NO. Lists various components like CAM, SNAIL, INSULATION ADJUSTMENT, WASHER, WAVE SPRING, CREST-TO-CREST, etc.

Technical drawing header/form including dimensions, tolerances, dimensions, material, weight, and customer information. Includes STC logo and 'Ocean Side Feed Applicator' text.

| LOC | DIST | REVISIONS | | | | | |
|-----|------|-----------|-----|-------------|------|-----|------|
| A | 66 | P | LYN | DESCRIPTION | DATE | OWN | APVD |
| | | - | | SEE SHEET 1 | - | - | - |
| | | | | | | | |
| | | | | | | | |

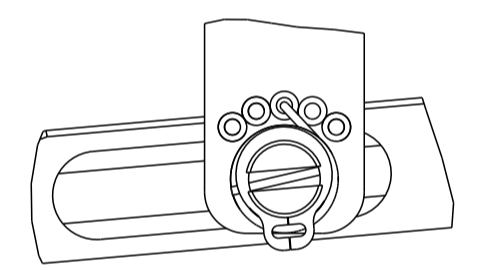
FEED TYPE

PNEUMATIC



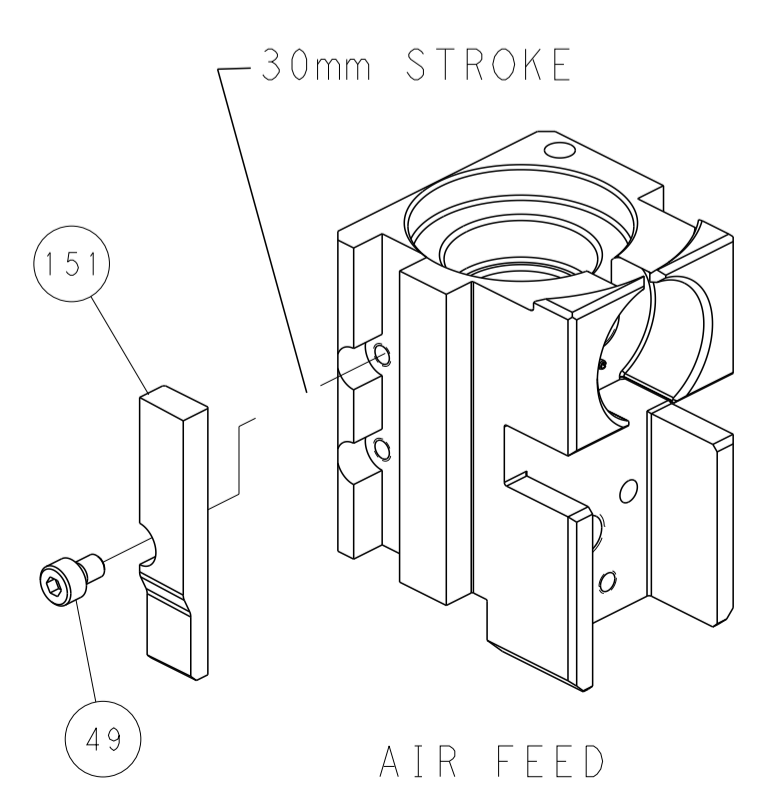
SEE DETAIL A

FEED SPRING SETTING POSITION (SHOWN FROM REAR SIDE)

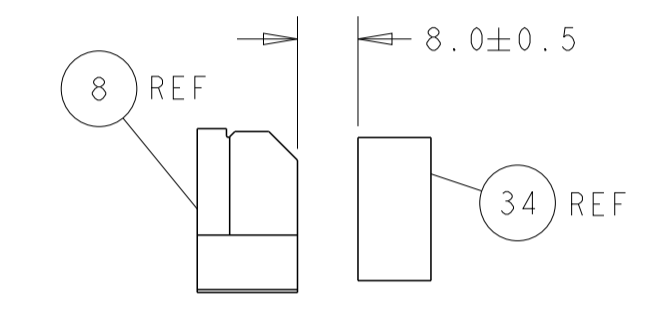
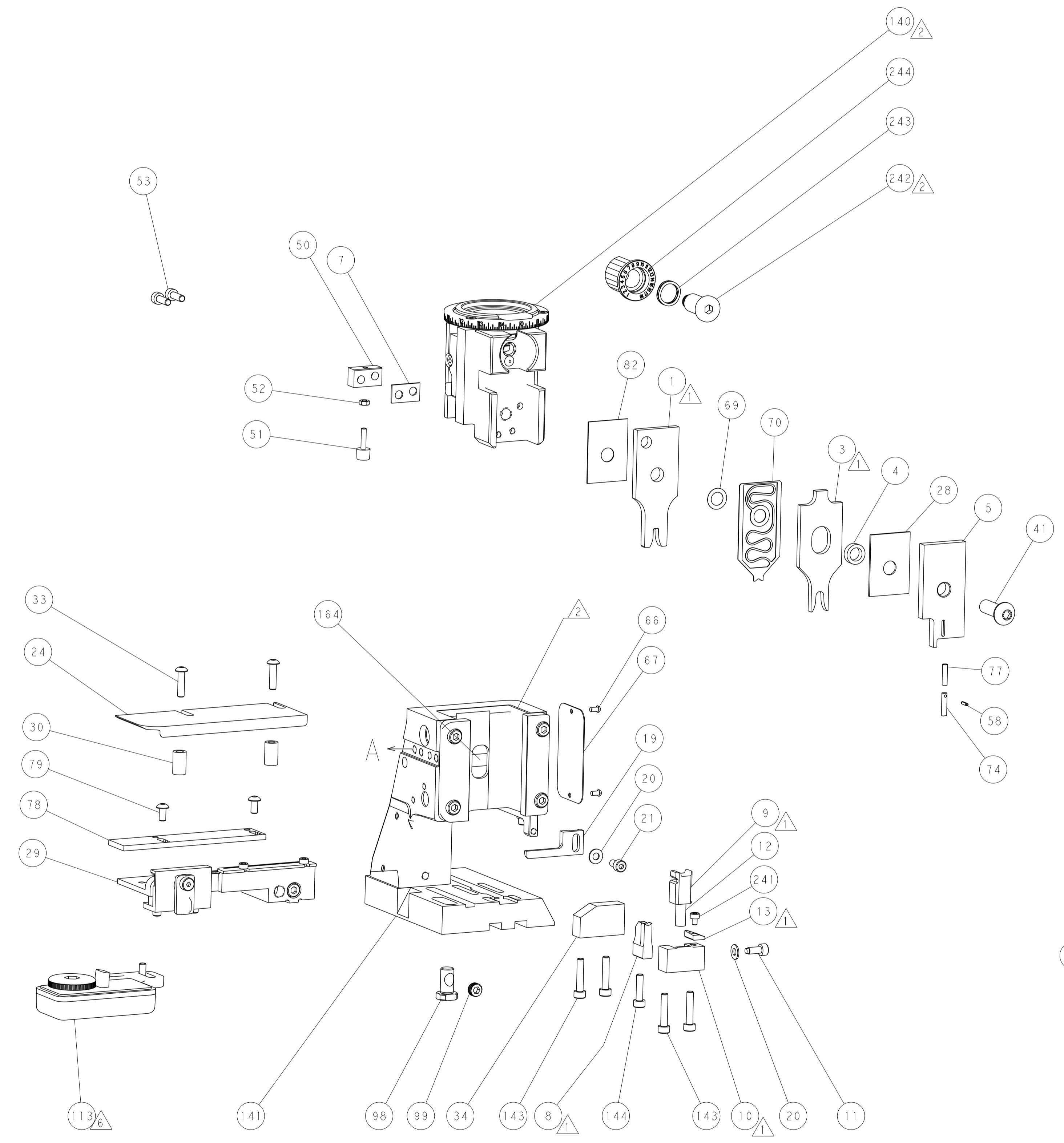


DETAIL A

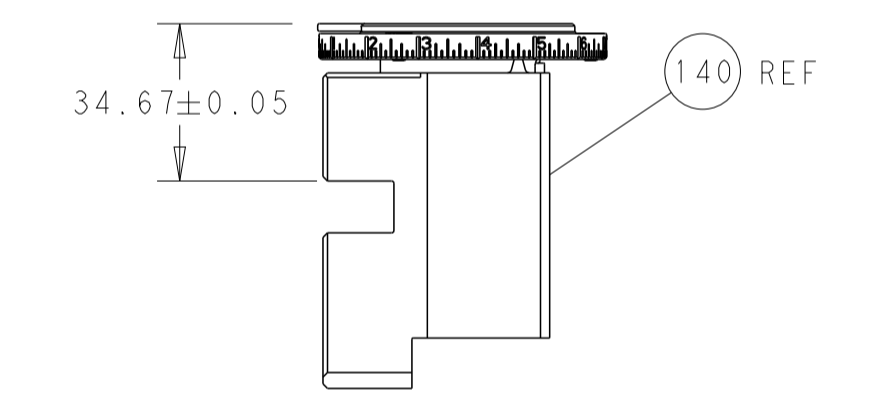
CAM POSITION



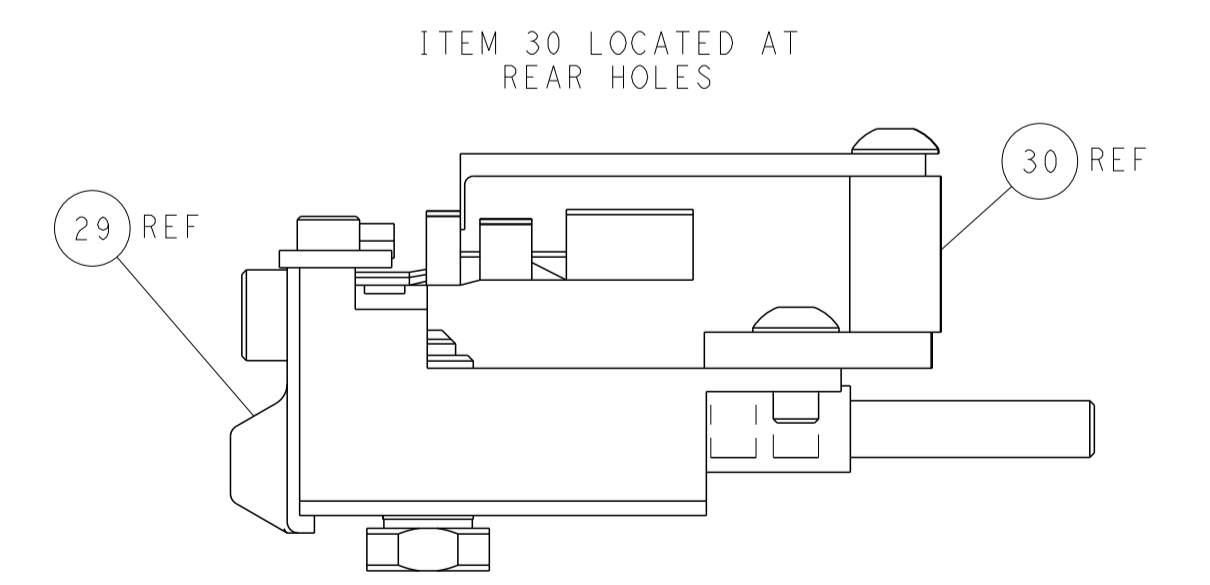
AIR FEED



TERMINAL SUPPORT LOCATION



RAM SET-UP



FEED TRACK POSITION GUIDE BY INSULATION BARREL

PACIFIC VERSION
 Shown on sheets 3 of 4 & 4 of 4
 (Atlantic version shown on sheets 1 of 4 & 2 of 4)

| | | | | |
|---|---|--|--|---|
| <small>THIS DRAWING IS UNPUBLISHED. RELEASED FOR PUBLICATION 20. COPYRIGHT 20 BY TYCO ELECTRONICS CORPORATION. ALL RIGHTS RESERVED.</small> | | DWN: Y. YIN 04JAN2013 CHK: G. BAILEY 04JAN2013 APVD: S. XI 04JAN2013 | NAME: Ocean Side Feed Applier SIZE: A1 CAGE CODE: 00779 DRAWING NO: 2151426 SCALE: 1:2 | RESTRICTED TO: J |
| DIMENSIONS: mm TOLERANCES UNLESS OTHERWISE SPECIFIED: 0 PLC ± 1 PLC ± 2 PLC ± 3 PLC ± 4 PLC ± ANGLES ± MATERIAL: - FINISH: - | WEIGHT: - Customer Accessible Production Drawing | SHEET 4 OF 4 | REV J | SHEETS 1 & 2 ARE NOT REQUIRED FOR PACIFIC VERSION |