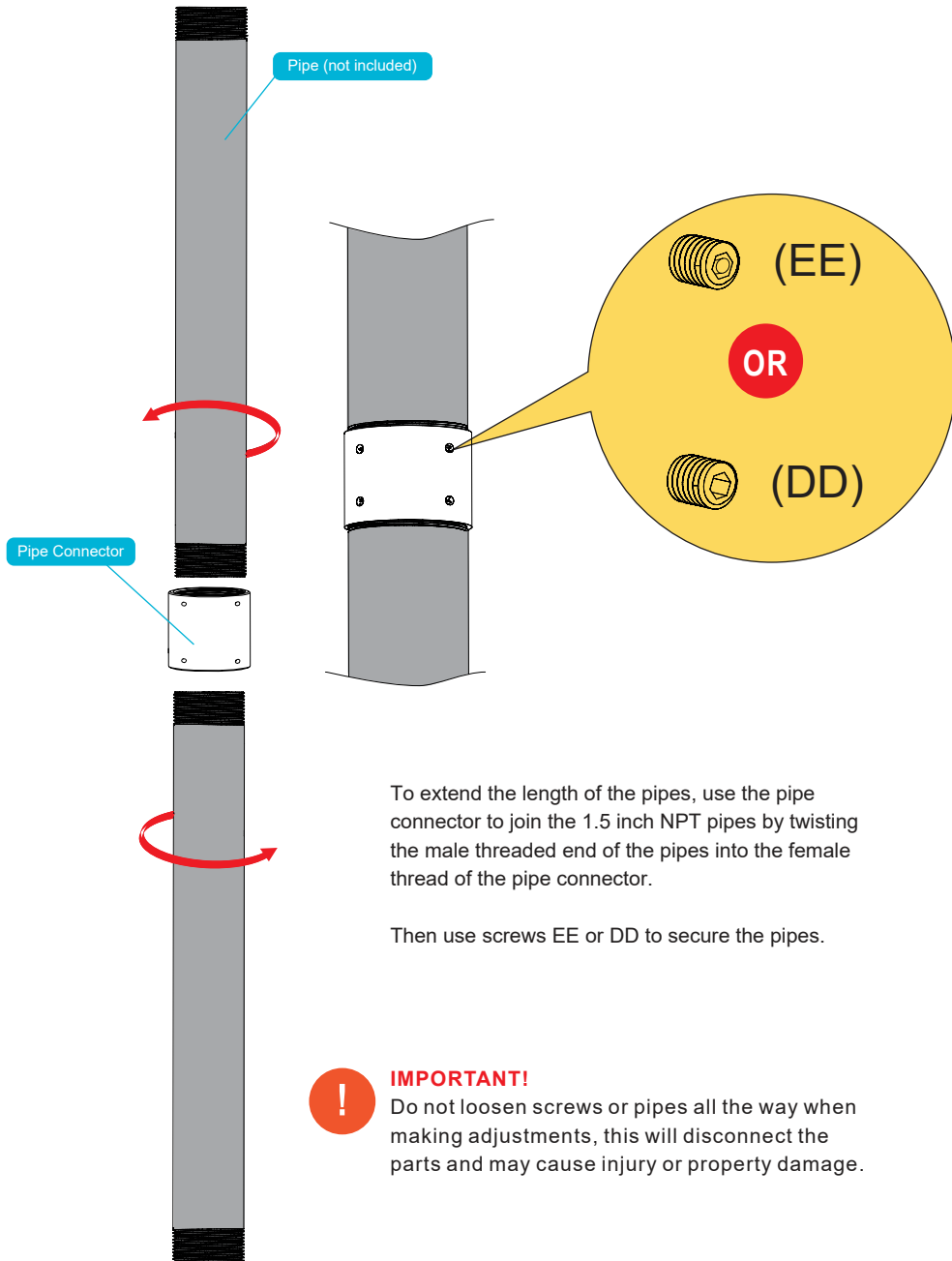


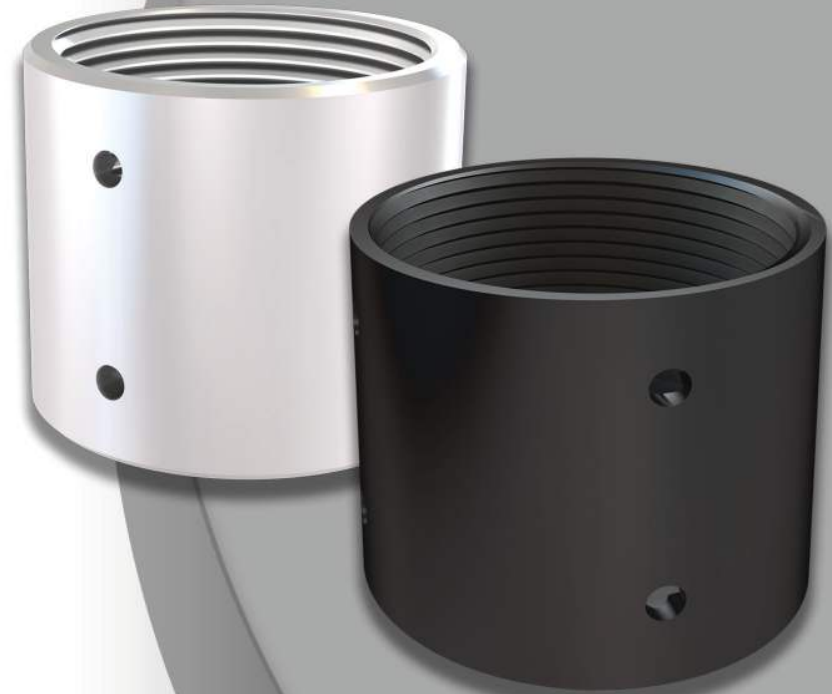
## Using the Pipe Connector to join the Pipes



**QualGear**<sup>®</sup>  
Accessories that Inspire.

**QG-PRO-PM-PC-B**  
**QG-PRO-PM-PC-W**  
INSTALLATION MANUAL

## PIPE CONNECTOR



[www.qualgear.com](http://www.qualgear.com)

**228kg**  
**(500lbs)**  
**RATED**

### CAUTION!

Do not exceed the maximum rated weight specified. Otherwise, serious injury or property damage may occur.



■ 5 Year Limited Warranty

■ Version November 2015

**NOTE** Please read the entire installation manual before you start installation and assembly.

## **WARNING**

- Do not begin to install your QualGear product until you have read and understood all the instructions and warnings contained in this installation manual. If you have any questions regarding the instructions, for US customers please contact QualGear customer support via email at support@qualgear.com. For all international customers, please contact your local distributor.
- This product should only be installed by someone of good mechanical aptitude, has experience with basic building construction, and fully understands these instructions.
- This product was designed to be installed and utilized only as specified in this manual. Improper installation of this product may cause damage or serious injury. QualGear is not liable for the improper use or installation of its products.
- Make sure that the supporting surface will safely support the combined load of the equipment and all attached hardware and components.
- Always use an assistant or mechanical lifting equipment to safely lift and position the equipment.
- Tighten screws firmly, but do not over tighten. Over tightening can damage the items, greatly reducing their holding power.
- ALL QUALGEAR products are intended for indoor use only and any outdoor use voids the limited warranty. For warranty information, please visit:  
<http://www.qualgear.com/warranty.php>
- Never exceed the maximum rated weight specified in this manual.
- All hardware must be used at the designated points in the installation instructions to prevent property damage and/or personal injury.
- This product was designed to be compatible with all standard 1.5" NPT threaded pipes.



**IMPORTANT:** Installers must verify that the supporting surface will safely support the combined weight of the equipment and all attached hardware and components

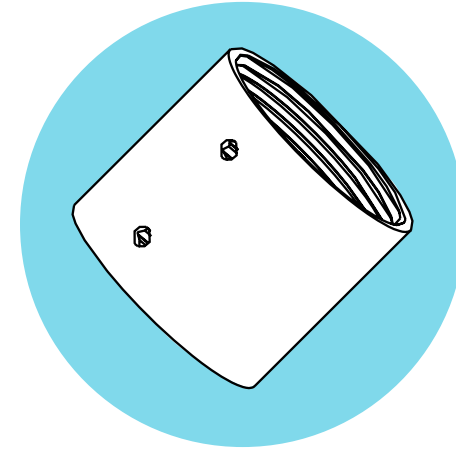
## **Maintenance**

Please check that the pipe(s) and pipe connector(s) are secure and safe to use at regular intervals. If you have any questions regarding any of the instructions or warnings, please contact your local distributor (OR) contact QualGear technical support via email at support@qualgear.com.

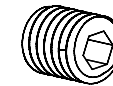
## **Parts & Hardware List**



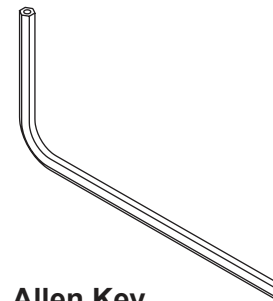
**IMPORTANT:** Before starting installation, please check that all parts shown in this checklist are included. If any parts are missing or damaged, contact your local distributor or support@qualgear.com for replacement parts and do not start assembly and installation until you receive all the parts.



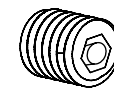
**Pipe Connector**



**M5 x 5 mm  
Screws  
DD (x4)**



**Allen Key  
II (x1)**



**M5 x 5 mm  
Security Screws  
EE (x4)**