

PART NUMBER	REV	FIRST USED
567961-1	A	854040-3

TERMINAL NAME: TERMINAL, BLADE					
VISIBLE PAD LTR	CRIMP HEIGHT	CRIMP DATA (NON-AMP TERM-AMP SPEC)			
		WIRE SIZE	CRIMP	SIZE	TYPE
A	.039 ±.002 [0.74 ±0.05mm]	26			
B	NOT	USED			
C	NOT	USED			
D	NOT	USED			
WIRE	INSUL	CRIMP	SIZE	TYPE	RANGE
			.062 [1.57mm]	0	26
			-	-	-

QTY	REV	TERMS	APPL SPEC	FEED	APPL INSTRUCTION	SET UP GAGE	LAYOUT	ITEM NO
2	-	C	5-354779-1		PIN, WIRE DISC (.3245) C		L2223	129
								128
								127
								126
1	-	A	986950-1		WASHER, FLAT PRECISION			125
1	-	A	217238-3		GENERAL INSTRUCTION PACKAGE			124
								123
								122
1	-	A	4-21028-0		PIN, SLT SPR (Ø.093x.75) ST GDE PL			121
1	-	B	690701-2		PLATE, SERIAL NO.			120
2	-	A	21899-2		WASHER, FLAT (#10) S G ADJ BLK			119
								118
2	-	A	21024-5		WASHER, LOCK (#10) ADJ BLOCK			117
								116
								115
2	-	A	21024-2		WASHER, LOCK (#4) FRONT STP GUIDE			114
REF	-	A	21024-4		WASHER, LOCK (#8) FEED FINGER			113
2	-	A	21024-4		WASHER, LOCK (#8) DEP-HOLD			112
REF	-	A	21024-4		WASHER, LOCK (#8) STRIPPER			111
								110
								109
1	-	A	21018-5		NUT, HEX (#6) HOLD DOWN			108
								107
								106
								105
								104
1	-	A	21009-2		SCR, SKT 5ET (1/4-20x.25 LW) RAM			103
								102
4	-	A	21017-2		SCR, DRIVE (#2x.19) ID PLATE			101
1	-	B	819347-1		PLATE, IDENTIFICATION			100
2	-	A	3-21002-0		SCR, BHC (10-32x.88) DRAG			99
1	-	A	22733-8		SCR, BHC (8-32x.38 LW) ANVIL			98
								97
1	-	A	3-21000-8		SCR, SHC (10-32x.88) MOUNTING			96
1	-	A	2-21002-7		SCR, BHC (10-32x.50) 56 ADJ BLK			95
6	-	A	2-21002-2		SCR, BHC (8-32x.50) SHEAR-TERM SUP			94
								93
								92
1	-	A	1-21002-7		SCR, SHC (6-32x.50) CAM			91
4	-	A	2-21000-7		SCR, SHC (8-32x.50) SCR BLK			90
								89
								88
								87
REF	-	A	2-22603-0		SCR, HEX HD (8-32x.31) FEED FINGER			86
2	-	A	1-21000-3		SCR, SHC (4-40x.25) F ST GUIDE			85
REF	-	A	22733-9		SCR, BHC (8-32x.50 SL) STRIPPER			84
								83
								82
1	-	A	3-22603-1		SCR, HEX (10-32x.38) 56 ADJ BL			81
								80
								79
								78
2	-	B	463310-8		BLADE, STRIPPING (#26)			77
								76
								75
								74
								73
								72
								71

QTY	REV	U/M	DWG SIZE	PART NO	DESCRIPTION	ITEM NO

QTY REOD PER ASSY		PARTS LIST	

SIM TO HDM NONE				ITEM NO	
				70	
				69	
				68	
				67	
				66	
				65	
				64	
				63	
				62	
				61	
				60	
				59	
				58	
				57	
REF	-	B	694433-8	PAWL, FEED	56
					55
					54
					53
					52
1	-	A	811242-2	BUMPER, HOLDDOWN	51
1	-	A	690753-1	SPACER, TONKER	50
					49
1	-	A	690602-6	CAM, PRE-FEED 1.62 STROKE	48
					47
					46
1	-	A	690191-1	PLUG, NYLON	45
1	-	C	455673-1	RAM	44
1	-	A	690125-1	WASHER, LAMINATED	43
1	-	A	690124-1	WASHER, RAM	42
1	-	A	7-21002-9	BOLT, CRIMPER (5/16x1.00)	41
					40
					39
1	-	A	690223-2	SPACER, INSULATION DISC	38
1	-	D	354777-1	WIRE DISC, PLASTIC	37
1	-	A	22480-5	WASHER, SPRING	36
1	-	B	690212-1	POST, RAM	35
1	-	B	690786-1	SUPPORT, TERMINAL	34
1	-	C	462544-1	PLATE, BASE SPECIAL	33
1	-	A	690432-3	SCREW, ADJUSTMENT	32
1	-	B	462543-1	BLOCK, SCREW SPECIAL	31
1	-	B	455689-1	BLOCK, STRIP GUIDE ADJ	30
1	-	C	455671-1	PLATE, STRIP GUIDE	29
					28
2	-	A	1-22284-0	SPRING, DRAG	27
1	-	B	690546-1	LEVER, DRAG RELEASE	26
1	-	B	240792-1	DRAG, TERMINAL	25
1	-	D	7-690440-3	GUIDE, STRIP (REAR)	24
1	-	A	690438-1	GUIDE, STRIP (FRONT)	23
					22
1	-	A	463756-1	GUIDE, SCRAP	21
					20
REF	-	C	462615-1	STRIPPER	19
					18
					17
					16
					15
					14
					13
1	-	A	5-22280-0	SPRING, SHEAR	12
1	-	B	1-690461-6	STOP, SHEAR (FRONT)	11
1	-	B	462548-1	HOLDER, SHEAR (FRONT) SP	10
1	-	B	462547-5	SHEAR, FLOAT (FRONT) SP	9
1	-	C	2-904717-1	ANVIL	8
1	-	C	1-240641-9	SPACER, DEPRESSOR (REAR)	7
					6
1	-	A	462838-4	DEPRESSOR, SHEAR (FRONT) SP	5
					4
					3
1	-	C	1-455888-9	SPACER, CRIMPER	2
1	-	C	4-459492-1	CRIMPER, WIRE	1

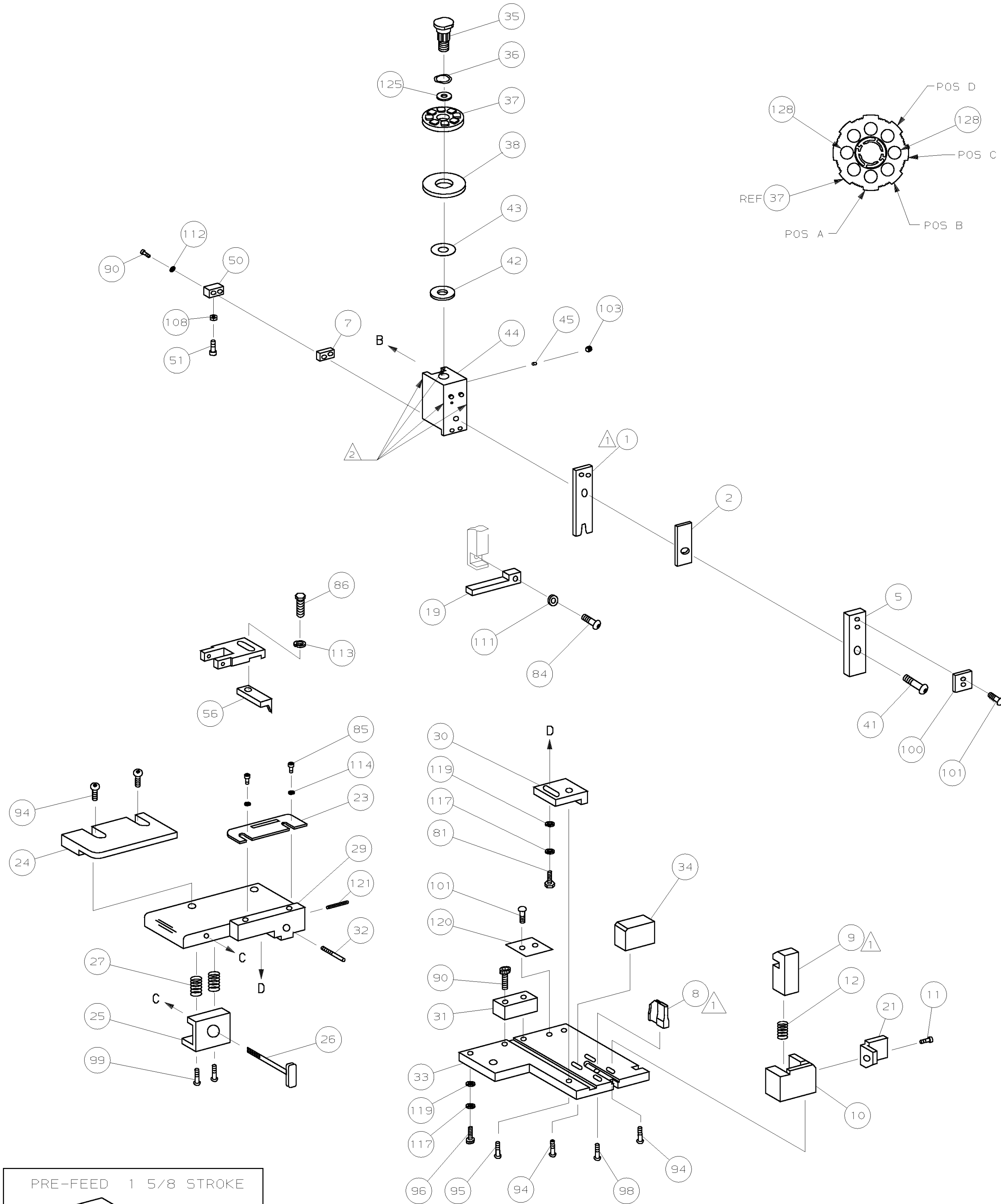
QTY	REV	U/M	DWG SIZE	PART NO	DESCRIPTION	ITEM NO

CUSTOMER AND ASSEMBLY DRAWING

THIS DRAWING IS A CONTROLLED DOCUMENT.

THIS DRAWING IS UNCLASSIFIED DATE 05-24-1999 BY AMP INCORPORATED. ALL RIGHTS RESERVED.

LOC A
DIST 66



- △ 1 RECOMMENDED SPARE PARTS.
- △ 2 GREASE LIGHTLY.
- △ 3 ITEM NOT SHOWN