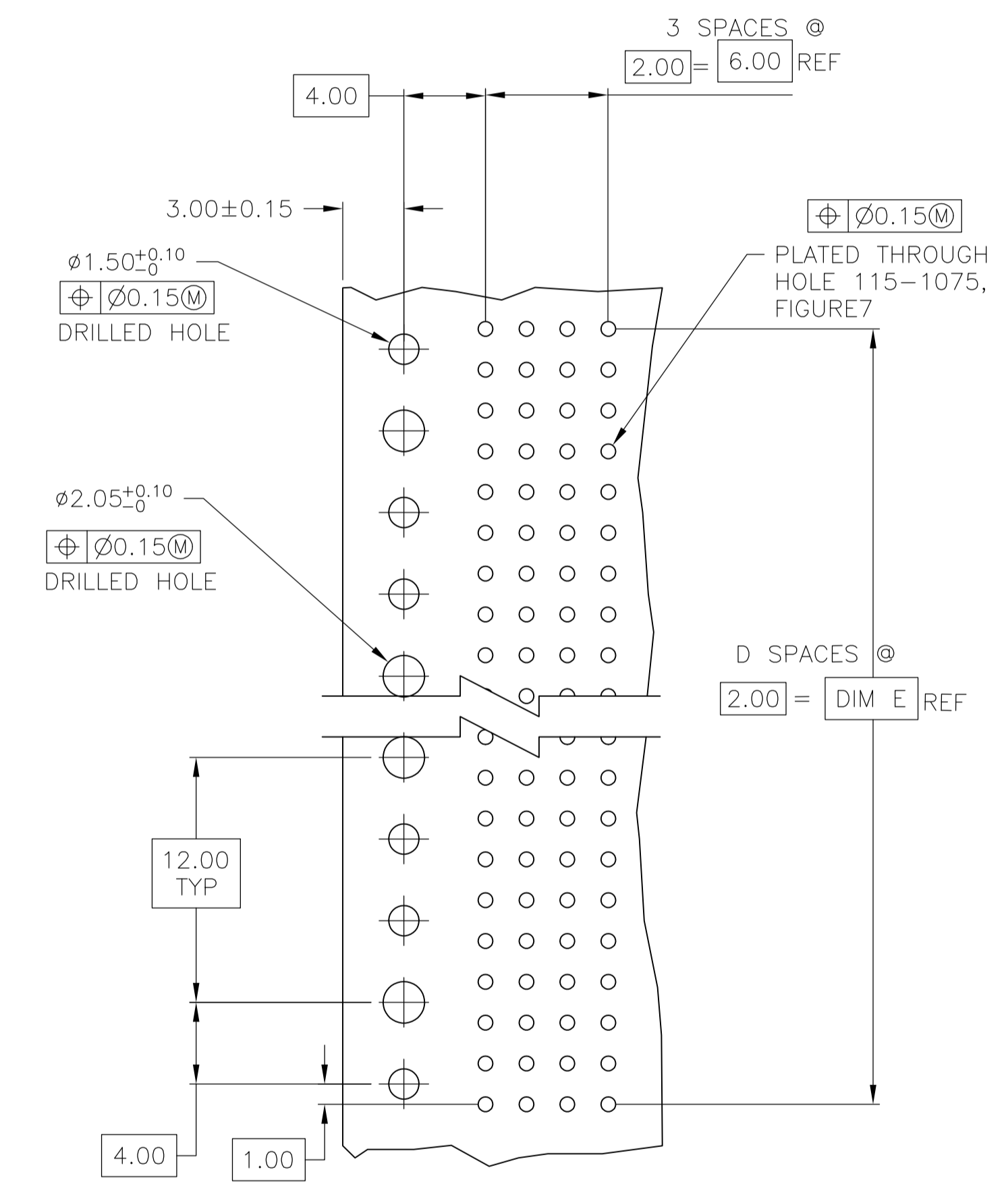
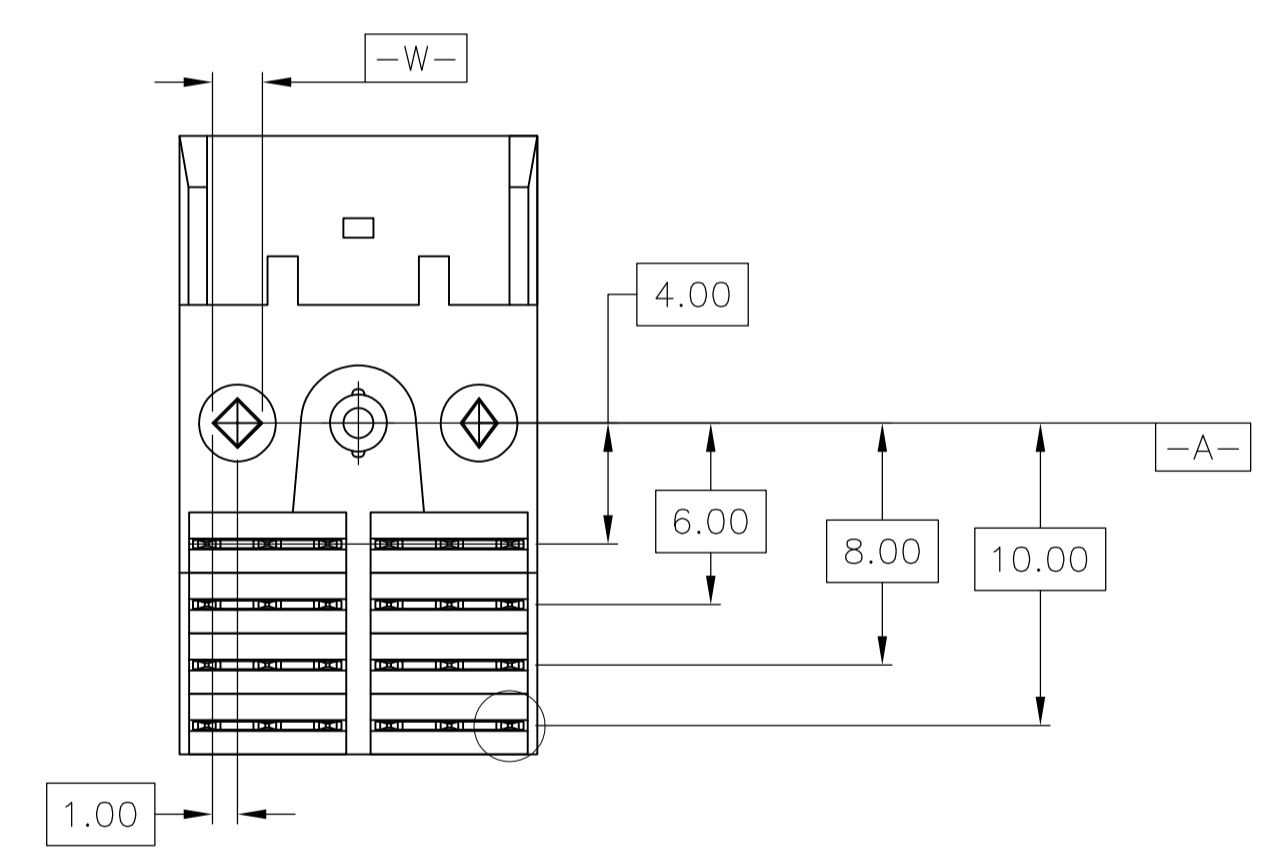
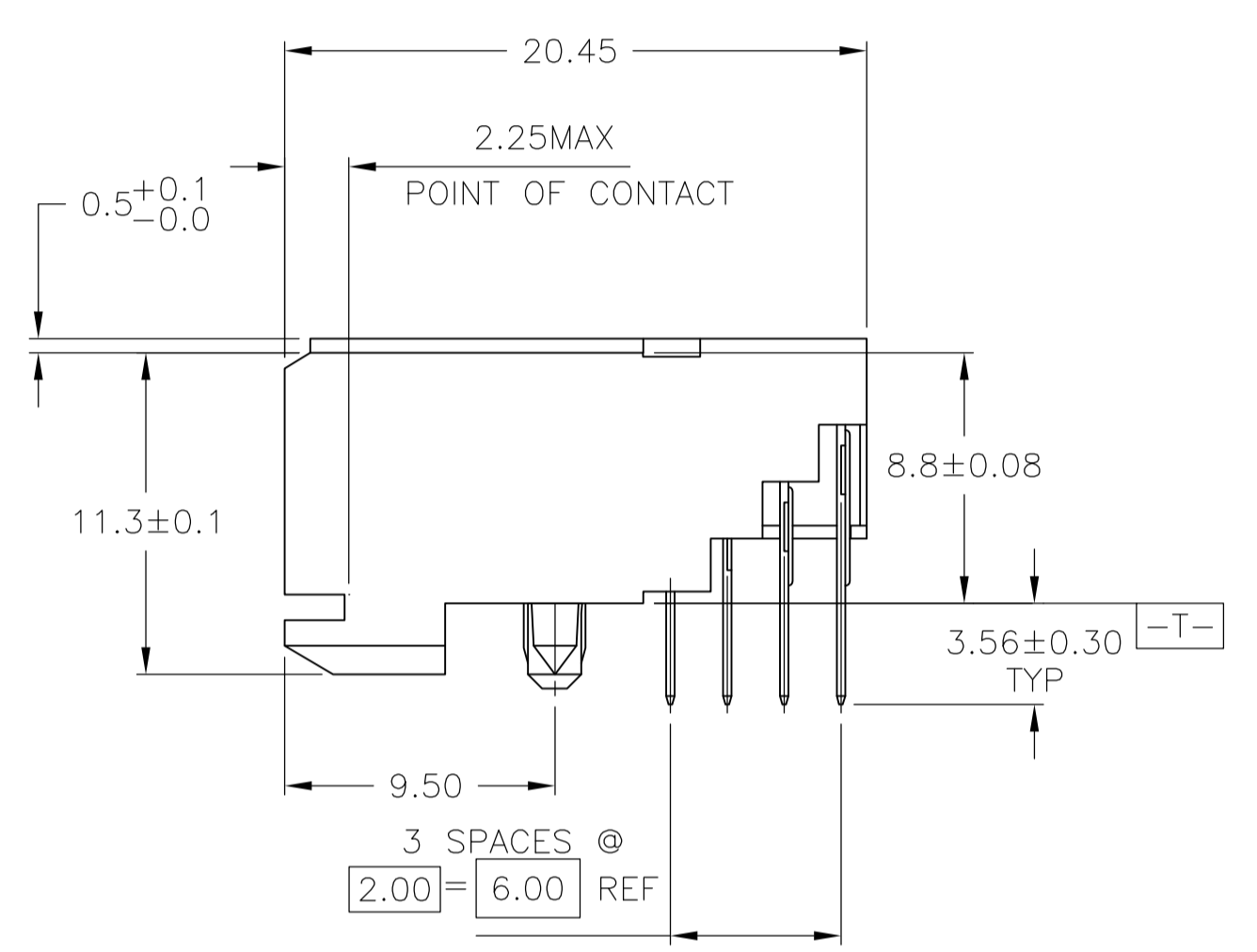
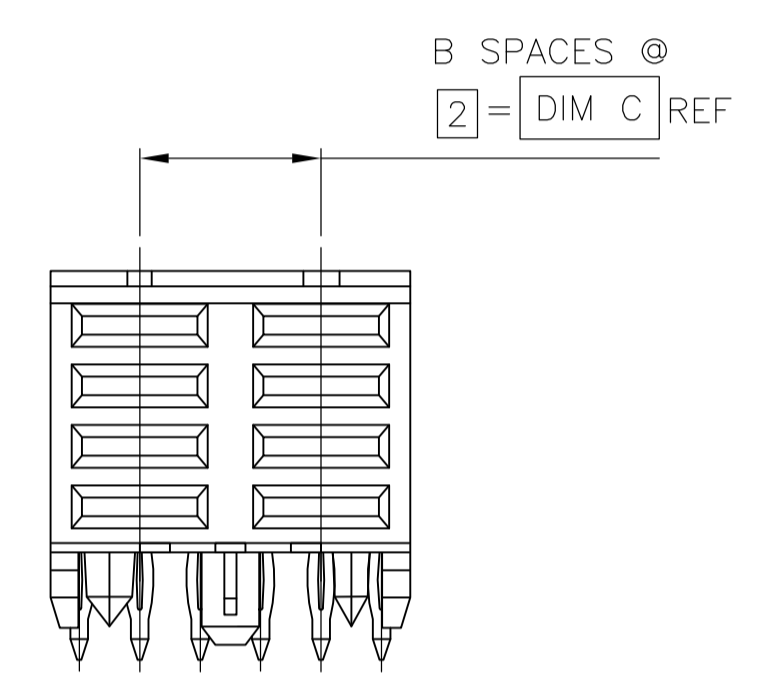
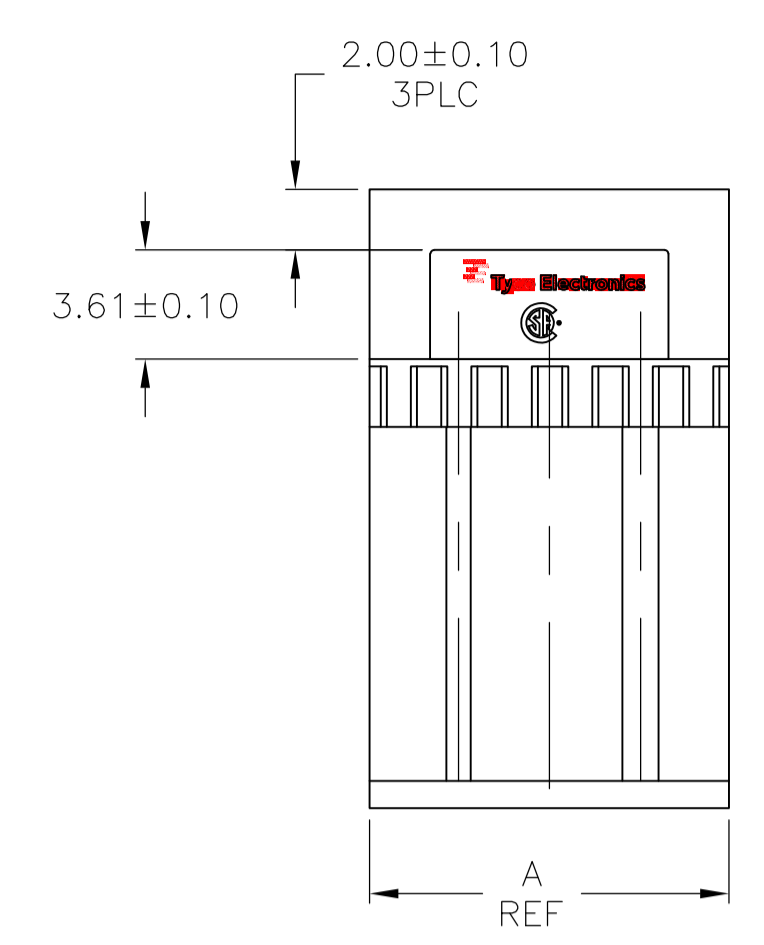
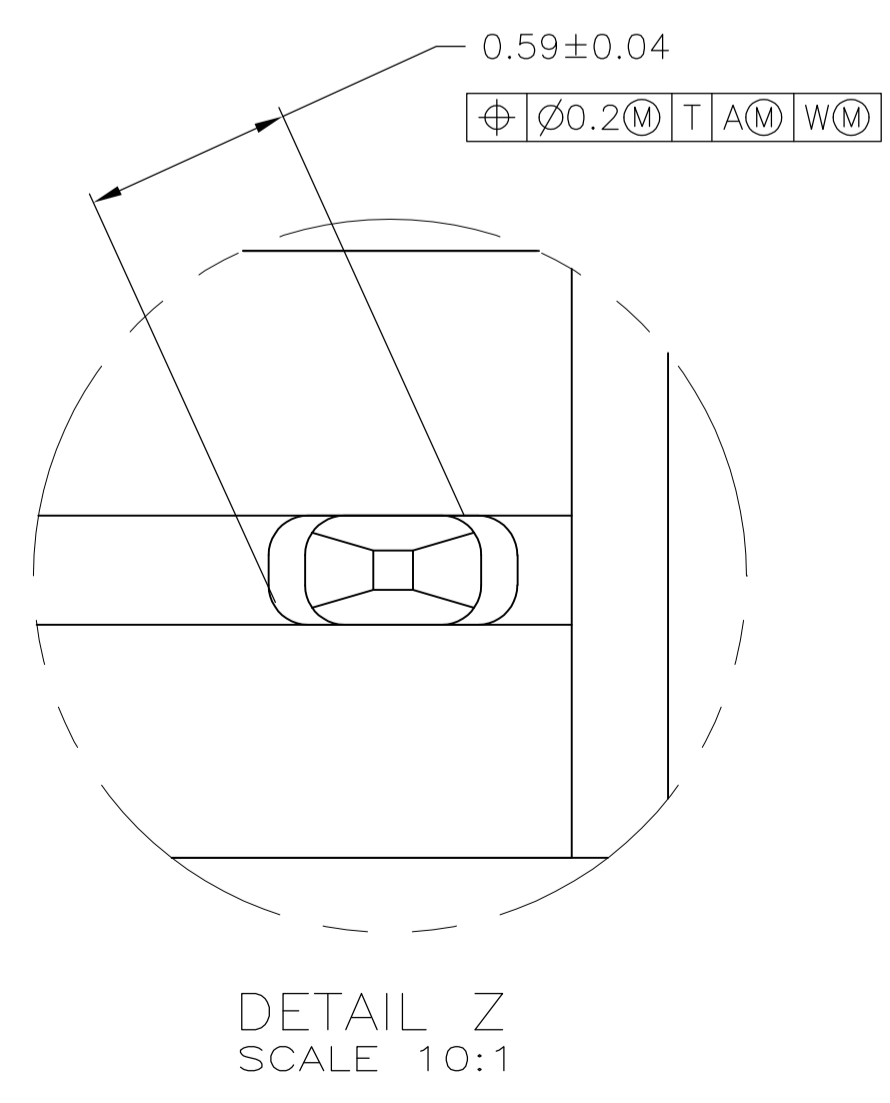
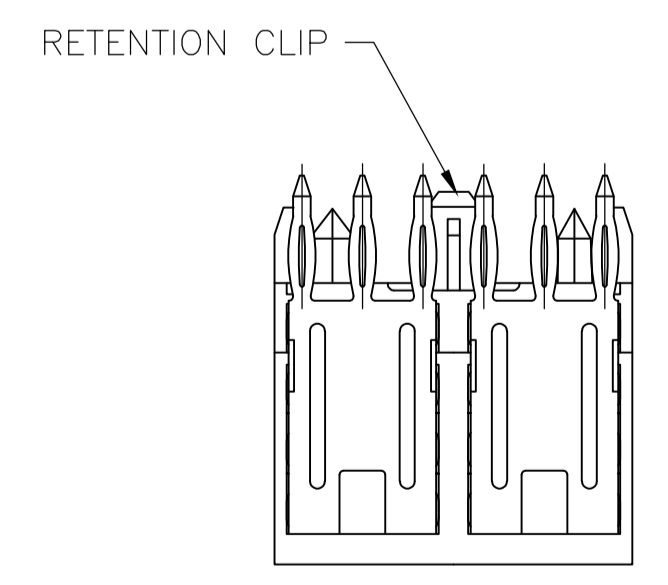


LOC		DIST		REVISIONS			
AD	00	REV	DATE	BY	CHK	APPV	
A		NEW DRAWING	23DEC11	KH	AS		

- 1 HOUSING MATERIAL: LIQUID CRYSTAL POLYMER.
- 2 CONTACT MATERIAL: PHOSPHOR-BRONZE.
- 3 CONTACT FINISH:(D)  
 UNDERPLATE (ENTIRE CONTACT):  
 0.00127 MIN NICKEL PER SAE-AMS-QQ-N-290  
 ON MATING SURFACES:  
 0.00076 MIN GOLD PER ASTM B488 OVER UNDERPLATE.  
 ON LEADS:  
 0.00127 MIN MATTE TIN PER ASTM B545 OVER UNDERPLATE.  
 LUBRICATION (MIN MATING SURFACES):  
 SURFACE CONDITIONER AFTER PLATING.



RECOMMENDED CIRCUIT PATTERN  
 PER IPC-D300 TYPE II, CLASS C  
 (COMPONENT SIDE)



DETAIL Z  
 SCALE 10:1

10	5	6.00	1	11.88	3	8	5223174-1
E	D	C	B	A	FINISH	NO OF POSN	PART NUMBER
THIS DRAWING IS A CONTROLLED DOCUMENT.				DIN KIRAN HOLAL 23DEC11		STE TE Connectivity	
DIMENSIONS: mm		TOLERANCES UNLESS OTHERWISE SPECIFIED:		CHK SHARPE ALEXANDER 23DEC11		NAME	
APVD SHARPE ALEXANDER 23DEC11		PRODUCT SPEC		APPLICATION SPEC		ASSEMBLY, RECEPTACLE, 4 ROW, PRESS-FIT, 3.56, POWER, 2mm FB	
MATERIAL		FINISH		SIZE CAGE CODE DRAWING NO		RESTRICTED TO	
1 2 3		A1 00779 C=5223174		WEIGHT		SCALE 4:1 SHEET 1 OF 1 REV A	
CUSTOMER DRAWING							