

TIN LEAD PART NUMBER

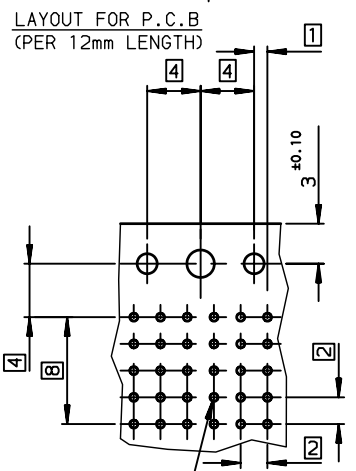
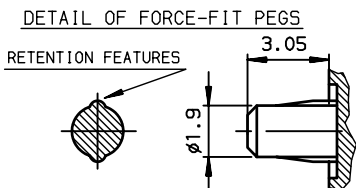
Part Number: HM1L52xDP000Hz6

MATING LENGTH DIM-P / REPLACE 'x' BY:					
	ROW-A	ROW-B	ROW-C	ROW-D	ROW-E
A =	5.00	5.00	5.00	5.00	5.00
L =	5.75	5.75	5.75	5.75	5.75
D =	6.50	6.50	6.50	6.50	6.50
B =	6.50	5.00	5.00	5.00	5.00
C =	6.50	5.75	5.75	6.50	5.75
M =	7.25	7.25	7.25	7.25	7.25
N =	8.00	8.00	8.00	8.00	8.00

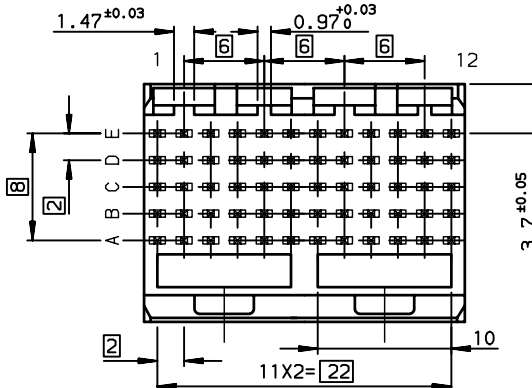
LEAD FREE PART NUMBER

Part Number: HM1L52xDP000HzLF

MATING LENGTH DIM-P / REPLACE 'x' BY:					
	ROW-A	ROW-B	ROW-C	ROW-D	ROW-E
A =	5.00	5.00	5.00	5.00	5.00
L =	5.75	5.75	5.75	5.75	5.75
D =	6.50	6.50	6.50	6.50	6.50
B =	6.50	5.00	5.00	5.00	5.00
C =	6.50	5.75	5.75	6.50	5.75
M =	7.25	7.25	7.25	7.25	7.25
N =	8.00	8.00	8.00	8.00	8.00



- NOTE-2: FLAT ROCK INSERTION TOOLING, ON ALL THIS SURFACE
- NOTE-3: EYE OF THE NEEDLE PRESS FIT PIN TYPE
- NOTE-4: REAR CENTRAL SUPPORT FOR BETTER ASSY ON PCB
- NOTE-5: IF SUFFIX "P" IS ADDED IN P/N PACKAGING IS IN TRAYS BUT CONNECTOR MARKING IS WITHOUT "P"  
EXAMPLE: HM1XXXXXXXXXHP, MARKED HM1XXXXXXXXXH6



GENERAL CHARACTERISTICS AND ROHS INFORMATIONS:

SEE PRODUCT SPECIFICATION GS-12-445

www.fciconnect.com		surface ISO 1302 ✓	tolerance std ISO 406 ISO 1101	projection mm	size A3	Scale 2.5
Dr ETIEMBRE 19/06/28		TOLERANCES UNLESS OTHERWISE SPECIFIED		ANGULAR LINEAR	size A3	Scale 2.5
Eng LENOIR 1997/01/23		0.X	±0.1			
Chr LEGARE 1997/01/23		0.XX	±0.1	ECN LS07-0184		
Appr LEGARE 1997/01/23		0.XXX	±0.1	Spec ref -		
Product family METRAL		Spec ref -				
FCJ title METRAL RA HEADER 5 ROW		catalog no		dwg no C-8626-0236		Rev. J
STANDARD PRESS-FIT 60 WAY		CUSTOMER		sheet 1 of 1		

rev	ecn no	dr	date
F	-	G01	2004/10/14
G	LS05-004	MLE	2005/02/17
H	LS06-0095	LGO	2006/07/10
J	LS07-0184	MLE	2007/07/24
-	-	-	-
-	-	-	-

Hole according to product spec  
GS-12-445 (For press-fit) ,  
GS-12-446 (For STB)