

5

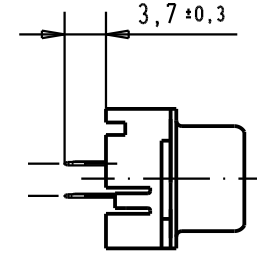
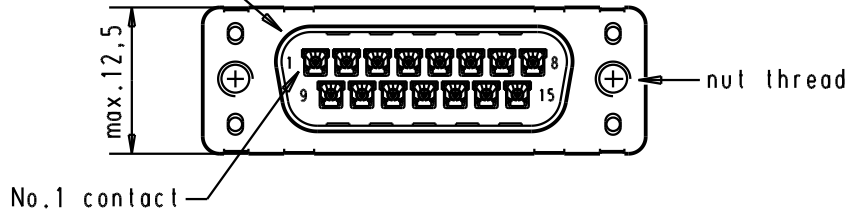
4

3

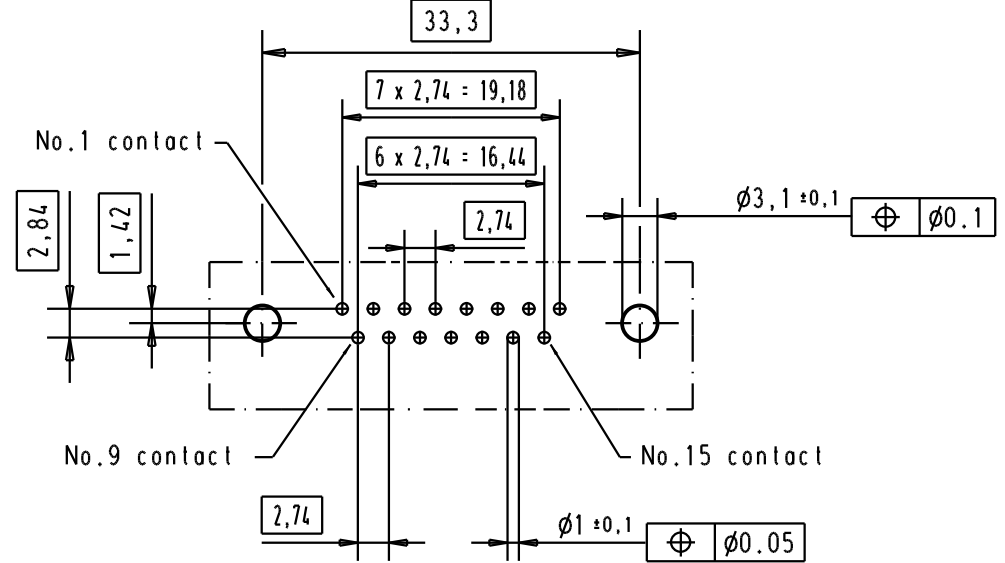
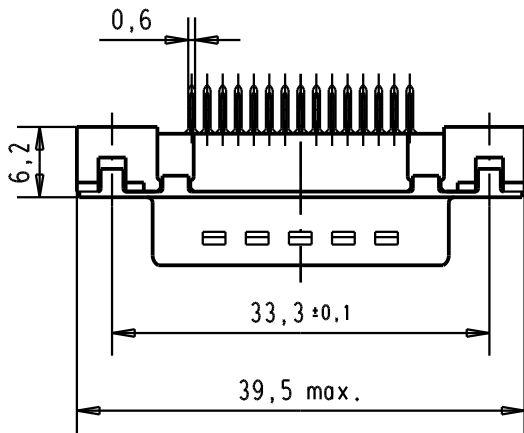
2

1

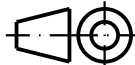

Mating face according to : MIL-C-24308 / DIN 41652 / CECC 75301-802



Printed board layout component side



A

| | | | | | | | | | | | | |
|----------------|----------|-------------------|-------|----------|------|-------------------------------|---------|----------|---|---|--|--------------------------------|
| 09 65 221 3701 | M3 | 1 | | | | | | | |  All Dim. in mm Orig. Size DIN A 4 | D-Sub, 15 poles, male, straight, with solder pins 3,7 and nuts. | Maßstab/ Scale 1,5:1 |
| 09 65 221 6701 | M3 | 2 | | | | | Detail. | 05/03/02 | CV | | | |
| 09 65 221 7701 | M3 | 3 | | | | | Insp. | | | | | |
| 09 65 221 3702 | 4-40 UNC | 1 | | | | | Stand. | | | | | |
| 09 65 221 6702 | 4-40 UNC | 2 | 31892 | 22/04/04 | JH | HARTING EURL F-95972 Paris | | |  | TB 09 65 221 X70X | Blatt/ Page 2 | |
| 09 65 221 7702 | 4-40 UNC | 3 | 29723 | 05/03/02 | CV | | | | | | | |
| Part number | φ hole | Performance level | Mod. | Dat. | Name | | | | Sub. | | | |