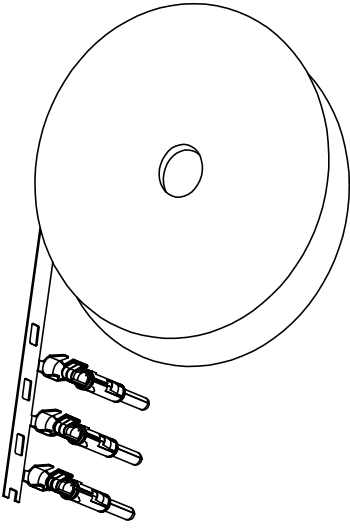


REVISONS					
REV	ECO	DESCRIPTION	DATE	BY	APPR
A1	-	RELEASED DRAWING	Sep-7-2016	Ben	Tommy
A2	-	Updating Drawing	Oct-16-17	Tommy	Tommy

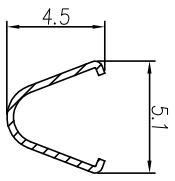


CONTACT ORIENTATION ON ROLL

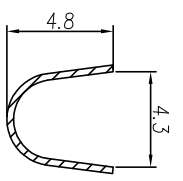
NOTES : (UNLESS OTHERWISE SPECIFIED)

1. MATERIAL :
 - 1.1. CONTACT BODY : COPPER ALLOY.
 - 1.2. OUTER SPRING : STAINLESS STEEL.
2. SPECIFICATIONS :
 - 2.1 CURRENT RATING : 23A MAX.
 - 2.2 TERMINATION TYPE : CRIMPING.
 - 2.3 WIRE RANGE : 4.0mm².
 - 2.4 WIRE INSULATION DIA(MAX) : ϕ 4.3mm.
3. ROHS COMPLIANT.
4. ALL DIMENSIONS ARE FOR REFERENCE USE ONLY.

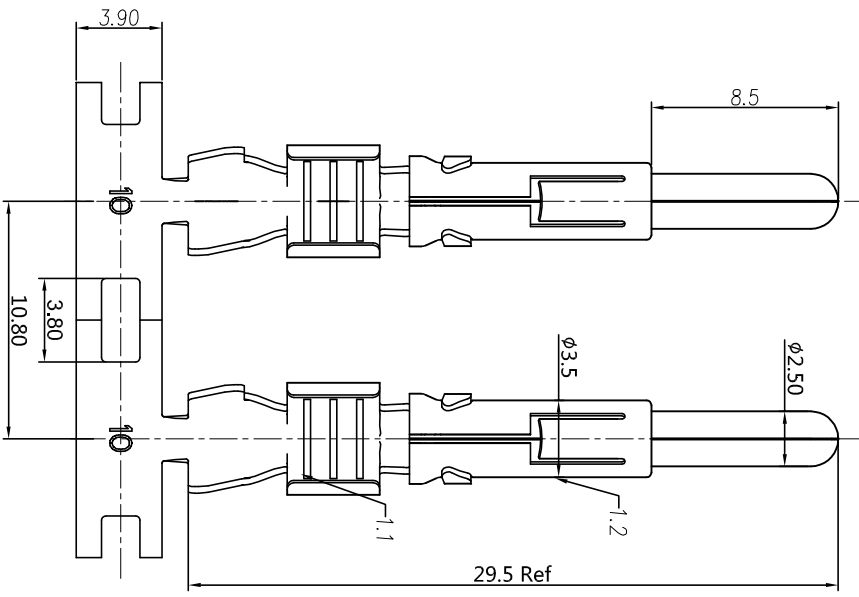
P/N	CONTACT PLATING(MATING AREA)
SP12A1T-10	TIN PLATING OVER NICKEL.
SP12A1F-10	GOLD FLASH PLATING OVER NICKEL.
SP12A1G10-10	10 μ "GOLD PLATING OVER NICKEL.
SP12A1G15-10	15 μ "GOLD PLATING OVER NICKEL.
SP12A1G30-10	30 μ "GOLD PLATING OVER NICKEL.



SECTION C-C



SECTION D-D



QUANTITY	PART NUMBER	DESCRIPTION	ITEM
1	SP12A1XX-10	ECO-MATE PIN CONTACT, STAMPED, 4.0mm ² , 2.5mm	0F5

MATERIALS LIST			
UNLESS OTHERWISE SPECIFIED	SIGNATURES	DATE	ITEM
1) All dimensions are in millimeters.	DRAWN: Ben	00T-16-17	
2) Tolerances are as follows:	CHECKED: Tom	00T-16-17	
1 Pl. DEC 40.30 Fractions 1/16"	ENGINEER: Tom	00T-16-17	
3 Pl. DEC 40.08 Angles 1°	APPROVAL: Tommy	00T-16-17	
3) Note reference = Δ	CUSTOMER: Tom	00T-16-17	

PROCESS SPECIFICATIONS			
NEXT ASSY:			
MATERIAL SPECIFICATIONS:			
FINISH SPECIFICATIONS:			
SPECIFICATIONS AND PERFORMANCE DATA:			
THE MANUFACTURING CORPORATION HAS NO RESPONSIBILITY FOR REPRODUCTION OR REPRODUCTION OF THIS DRAWING IN ANY FORM OR BY ANY MEANS, WITHOUT THE WRITTEN PERMISSION OF THE MANUFACTURING CORPORATION. ALL DIMENSIONS AND TOLERANCES ARE IN MILLIMETERS UNLESS OTHERWISE SPECIFIED.			
SCALE:	TYPE:	SIZE:	REVISION:
NONE	C-	B	A2
SHEET:	OF:	1	1

Amphenol
 Site Systems - www.amphenol-site.com
 44724 Morley Drive
 Clinton Township, MI 48036

ECO-MATE PIN CONTACT,
 STAMPED, 4.0mm², 2.5mm CONTACT