

# AGM Series

## Single Phase Medical Grade EMI Filter

These series range of General Purpose filters are designed to suppress undesirable electrical disturbances in medical applications for low leakage requirements.



### FEATURES

- Rated Current up to 50A
- Low Leakage
- High Conducted attenuation performance
- Chassis mounting

### APPLICATIONS

- Diagnostic Equipment
- Surgical Beds
- X ray Machines
- Medical Applications

### SERIES SPECIFICATIONS

Part No.	Rated current @40°C	Termination		Weight (kg)
		Tab	Screw	
AGM-001	1A	6.3 x 0.8		0.06
AGM-002	2A	6.3 x 0.8		0.06
AGM-003	3A	6.3 x 0.8		0.06
AGM-006	6A	6.3 x 0.8		0.06
AGM-010	10A	6.3 x 0.8		0.06
AGM-015	15A	6.3 x 0.8		0.125
AGM-016	16A	6.3 x 0.8		0.125
AGM-020	20A	6.3 x 0.8		0.260
AGM-025	25A		M5	0.6
AGM-030	30A		M5	0.6
AGM-035	35A		M5	0.6
AGM-040	40A		M5	0.6
AGM-050	50A		M6	1

### CHARACTERISTICS

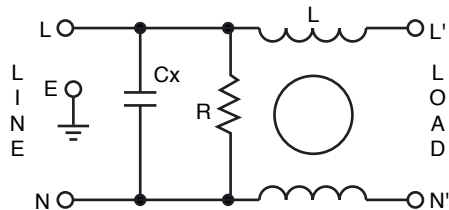
<b>Max. Cont. Oper. Voltage</b>	250VAC
<b>Operating Frequency</b>	50/60Hz
<b>Current ratings</b>	1A to 50A @40°C
<b>High Potential test voltage</b>	L to G 2120Vdc for 1 Minute; L to L 1414Vdc for 1 Minute
<b>Design</b>	Corresponding to UL 60939-3, CSA 22.2 No.8-13 and IEC 60939
<b>Overload Capability</b>	135% of Rated current for 15 minutes
<b>Flammability</b>	corresponding to UL 94 V-0
<b>Temperature range</b>	-25°C to +85°C
<b>Climatic Category</b>	25/85/21
<b>Recommended Torque (Nm)</b>	M5: 1.0-2.0; M6: 1.25 – 2.5

(continued)

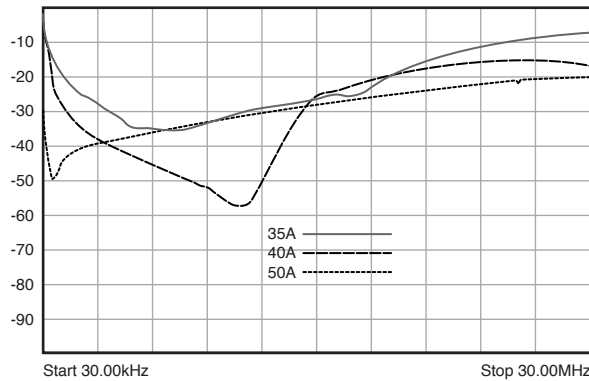
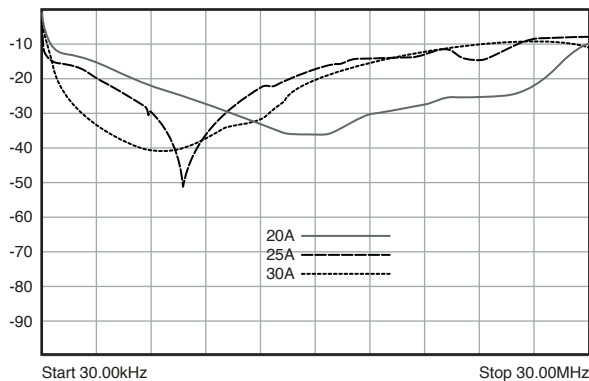
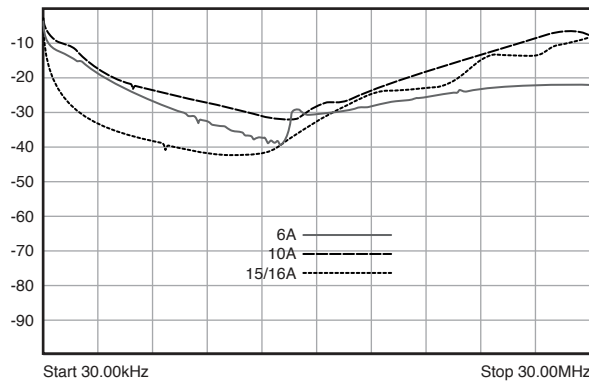
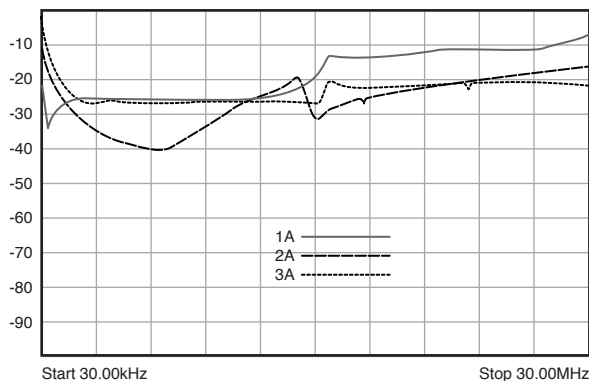
# AGM Series

## Single Phase Medical Grade EMI Filter

### CIRCUIT DIAGRAM



### INSERTION LOSS



(continued)

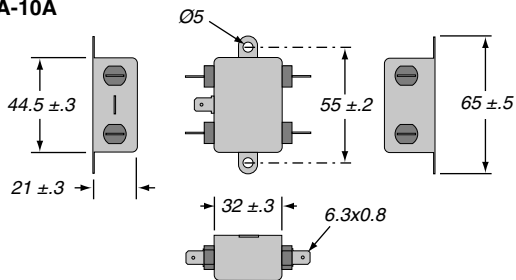
# AGM Series

## Single Phase Medical Grade EMI Filter

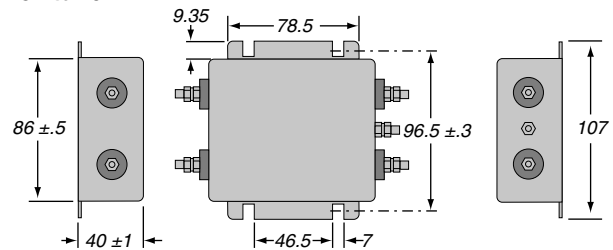
### DIMENSIONS

All dimensions in mm; Tolerances according to ISO2768-m

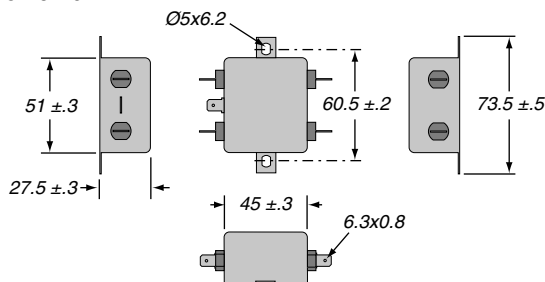
1A-10A



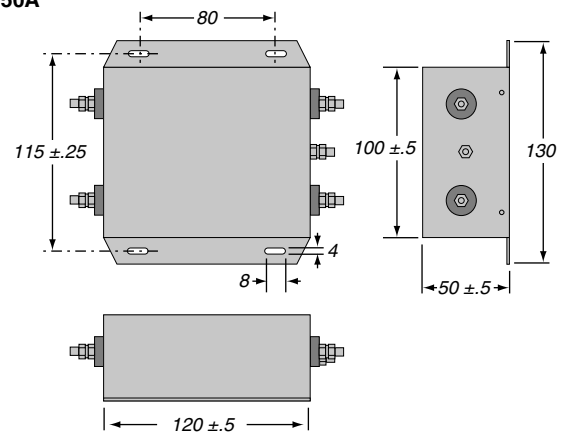
25A to 40A



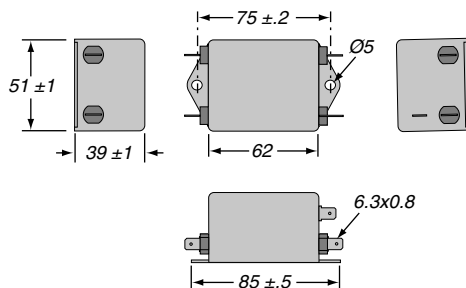
15A & 16A



50A



20A



### ORDERING INFORMATION

**AGM - 002**

Series	Medical grade	Current rating
--------	---------------	----------------

**Standard part numbers**

- AGM-001
- AGM-002
- AGM-003
- AGM-006
- AGM-010
- AGM-015
- AGM-016
- AGM-020
- AGM-025
- AGM-030
- AGM-035
- AGM-040
- AGM-050