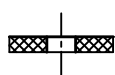
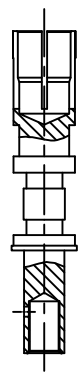
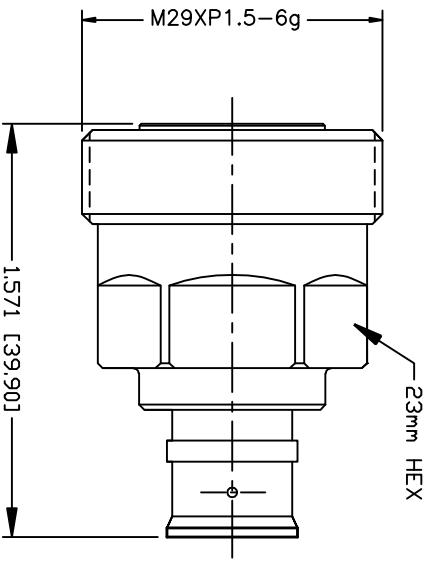


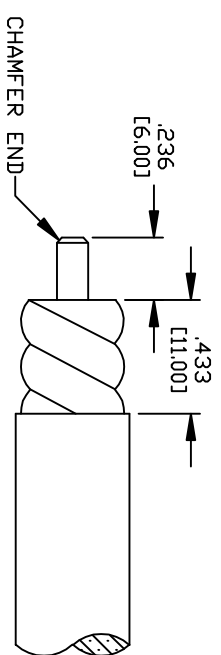
PART NO. **RFD-1625DS-H8**

REV	DESCRIPTION	DWN	DATE	APPROVED
-	ENGINEERING RELEASE	DM	11/3/20	JDM



CONTACT
SOLDER ONLY

INSULATOR



RECOMMENDED STRIPPING DIMENSIONS

SPECIFICATIONS:

IMPEDANCE: 50 Ohms
 INTERFACE: IEC 61169-4
 FREQUENCY RANGE: 0-7.5 GHz
 INSERTION LOSS: -0.1 dB MAX
 RETURN LOSS: 32 dB 0-1500 MHz
 RETURN LOSS: 27 dB 1500-3000 MHz
 RETURN LOSS: 21 dB 3000-5000 MHz
 RETURN LOSS: 18 dB 5000-6000 MHz
 3rd ORDER IM: <-161 dBc
 3rd ORDER IM TEST METHOD: 2x43 dBm
 COUPLING TORQUE: 25 Nm MIN.
 CABLE RETENTION FORCE: 250 Nm
 ENVIRONMENTAL/COMPLIANCE: IP68 MATED / RoHS
 TEMPERATURE RANGE: -55°C +85°C
 DURABILITY: >500 MATING CYCLES
 DIELECTRIC WITHSTANDING VOLTAGE: 4000 VRMS SEA LEVEL
 INSULATION RESISTANCE: >10,000 MΩ
 NET WEIGHT: 0.185 lb
 FOR FSJ2-50, LCF38-50J, LDF2-50, SCF38-50J, SPF-375,
 SPO-375 & SPP-375 CABLE

#	DESCRIPTION	QTY	MATERIAL	FINISH
5	COUPLING NUT	1	BRASS	CUSnZn ALLOY
4	GASKET	1	SILICONE	---
3	PIN	1	BRASS	SILVER
2	INSULATOR	2	PTFE	NATURAL
1	BODY	1	BRASS	CUSnZn ALLOY

CUSTOMER
 OUTLINE DRAWING
 ALL DIMENSIONS
 ARE REFERENCE ONLY
 UNLESS OTHERWISE SPECIFIED:
 DIMENSIONS ARE IN INCHES
 AND [MILLIMETERS]

PROPRIETARY AND CONFIDENTIAL
 THIS DRAWING CONTAINS
 INFORMATION PROPRIETARY TO
 RF INDUSTRIES. ANY
 UNAUTHORIZED USE OF THIS
 DRAWING IS EXPRESSLY
 PROHIBITED WITHOUT WRITTEN
 PERMISSION FROM RF
 INDUSTRIES. ANY VIOLATION IS
 PUNISHABLE UNDER U.S.
 COPYRIGHT LAWS.

RF Industries
 DIVISION OF RF INDUSTRIES, LTD. (858) 549-6346 FAX
 RFINDUSTRIES.COM
 7610 MIRAMAR RD.
 SAN DIEGO, CA 92126
 (858) 549-6340

7/16 DIN FEMALE
DIRECT SOLDER, FOR 3/8" SUPERFLEX

CABLE GROUP DWG #	H8	REVISION	---
FORMAT	A	SCALE	NTS
CONTROL #	000000	SHEET	1 OF 1