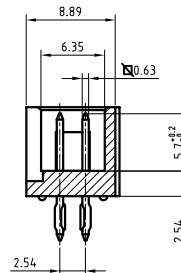
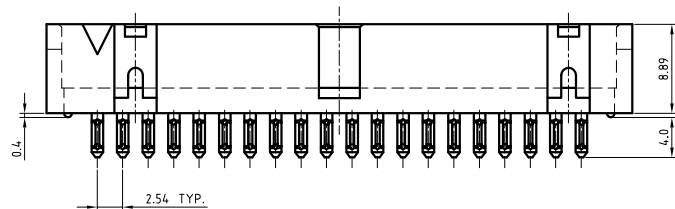
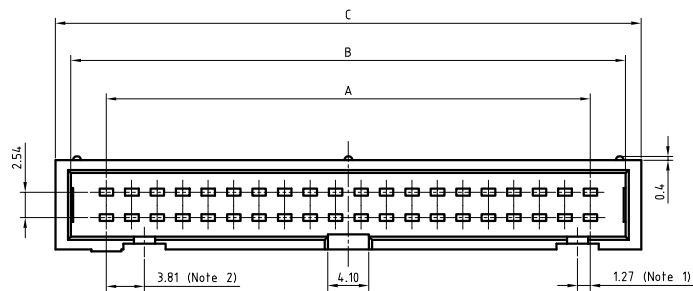


Copyright FCJ  
FCconnect.com



**TECHNICAL SPECIFICATION**

HOUSING MATERIAL	:	GLASS REINFORCED THERMOPLASTIC UL94V0; GREY
CONTACT MATERIAL	:	COPPER ALLOY
CONTACT PLATING	:	
ACTIVE ZONE	:	FOR CODE "GS" TIN LEAD VERSION - SnPb OVER Ni FOR CODE "GS" LEAD FREE VERSION - Sn (PURE MATT) OVER Ni FOR ALL OTHER CODES - Au OVER Ni
TERMINATION ZONE	:	SnPb OVER Ni FOR TIN LEAD VERSION Sn (PURE MATT) OVER Ni FOR LEAD FREE VERSION
CURRENT RATING	:	1.5A AT 20°C
INSULATION RESISTANCE	:	≥ 1000MΩ AT 500V
CONTACT RESISTANCE	:	< 15mΩ
CONTACT RETENTION	:	15N Min.
DIELECTRIC WITHSTANDING VOLTAGE	:	1000Vrms
OPERATING TEMPERATURE	:	-55°C TO +125°C
REFERENCE SPECIFICATION	:	IEC 603-13 / DIN 41651

**NOTES**

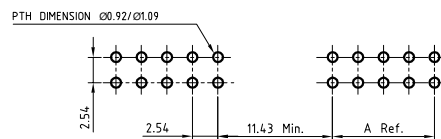
- RIGHT POLARISATION IS NOT PROVIDED FOR 10 POSITION.
- LEFT POLARISATION IS NOT PROVIDED FOR 10 & 14 POSITIONS.
- POLARISING KEYS : 8613-4102 OR 8613-4104

SERIES	BPH 7 B 20 H 00 N9 LF
TYPE OF INSULATOR	
INSULATOR WITH CENTRE POLARISATION (10 POSITION ONLY)	7
INSULATOR WITH CENTRE POLARISATION & KEY (14 TO 60 POSITIONS ONLY)	9
CONTACT SPACING	B
No. OF CONTACTS	10, 14, 16, 20, 26, 34, 40, 50, 60
TERMINATION STYLE	H
STRAIGHT PRESSFIT	
STANDARD	00
CONTACT ACTIVE ZONE PLATING	
0.4µ SELECTIVE Au PLATING	BLANK
0.75µ SELECTIVE Au PLATING	N9
SnPb (FOR TIN LEAD VERSION) / Sn PURE MATT (FOR LEAD FREE VERSION)	GS
SPECIAL CODE	
TIN LEAD VERSION	BLANK
LEAD FREE VERSION	LF

**RECOMMENDED PCB HOLE CONFIGURATION**

(SHOWN FROM THE COMPONENT SIDE)

PCB THICKNESS 1.6 / 2.4 / 3.2 mm



No. OF POSITION	A	B	C
10	10.16	18.04	20.32
14	15.24	23.12	25.40
16	17.78	25.66	27.94
20	22.86	30.74	33.02
26	30.48	38.36	40.64
34	40.64	48.52	50.80
40	48.26	56.14	58.42
44	53.34	61.22	63.50
50	60.96	68.84	71.12
60	73.66	81.54	83.82

**NOTES:**

- THE "LF" PRODUCTS MEET EUROPEAN UNION DIRECTIVES AND OTHER COUNTRY REGULATIONS AS DESCRIBED IN GS-22-008.
- LEAD FREE OR RoHS DIRECTIVE LABELING TO BE PROVIDED AS PER GS-14-920 FOR LEAD FREE VERSION.

mat'l. code		surface		tolerance		projection		product family	
SEE TECH. SPEC.		ISO 1302		ISO 406 ISO 1101		mm		BPH	
ltr	ecn no	dr	date	tolerances unless otherwise specified		mm		title	
D	105-0224	MINI	2005-11-09	.02.1		mm		BPH PRESSFIT BOX HEADER	
E	106-0066	MINI	2006-06-01	angles	linear	scale 2:1		dwg no	
F	107-0149	KR	2007-11-05	0°±1°				sheet 1 of 1 size	
		dr	YMP	1999-03-16		FCJ		C-8613-0029 A3	
		engr	KESAVAN.R	2007-11-05				type	
		chr	KESAVAN.R	2007-11-05				Product Customer Drawing	
		appd	RAKHEE GEORGE	2007-11-05					
sheet index	revision sheet	F	1						