

ML4002-28-3dB

Technical Reference

QSFP Electrical Passive Loopback Module

MSA Compliant 28G

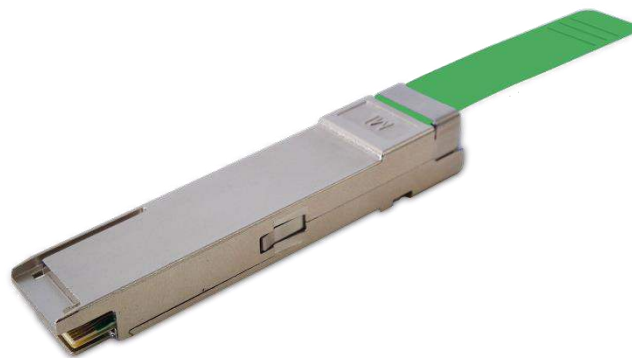


Table of Contents

1. General Description.....	4
2. Functional Description.....	4
2.1 Management Data Interface – I2C	4
2.2 I2C Signals, Addressing and Frame Structure.....	4
2.2.1 I2C Frame	4
2.2.2 Management Timing Parameters	5
2.2.3 Device Addressing and Operation	5
2.3 I2C Read/Write Functionality	7
2.3.1 QSFP+ Memory Address Counter (Read AND Write Operations)	7
2.3.2 Read Operations	7
2.4 Low Speed Signals.....	8
2.4.1 ModselL	8
2.4.2 ResetL	8
2.4.3 LPMode	9
2.4.4 ModPrstL.....	9
2.4.5 IntL	9
2.5 QSFP Memory Map	10
2.6 ML4002-28-3dB Specific Functions.....	11
2.6.1 Temperature Monitor	11
2.6.2 Insertion counter	11
2.6.3 Programmable Power Dissipation and Thermal Emulation	11
2.6.4 Cut-Off Temperature	12
2.6.5 Voltage Monitor.....	12
2.6.6 Low Speed Control Signals Pin State.....	12
3. QSFP28 Pin Allocation	13

Table of Figures

Figure 1: QSFP Timing Diagram.....	4
Figure 2: QSFP Device Address	6
Figure 3: QSFP+ Current Address Read Operation	7
Figure 4: QSFP+ Random Read	7
Figure 5: Sequential Address Read Starting at QSFP+ Current Address.....	8
Figure 6: QSFP+ Memory Map.....	10
Figure 8: QSFP+ Pin Map.....	13

ML4002-28-3dB QSFP 4x28G Passive Loopback Module | Key Features

- ✓ Power Consumption up to 5.5W
- ✓ Operation up to 28G per lane
- ✓ Dual LED indicator
- ✓ Custom Memory Maps
- ✓ MSA Compliant Memory Map
- ✓ High performance signal integrity traces
- ✓ Temperature Monitoring
- ✓ Voltage Monitoring
- ✓ Insertion Counter
- ✓ Cut-Off temperature preventing over heating
- ✓ Microcontroller based

LED Indicator

Green (Solid) - Signifies that the module is operating in high power mode.

Red (Solid) - Signifies the module is operating in low power mode.

Green/Red (Blinking) - Signifies that the temperature alarm is asserted.

Recommended Operating Conditions

Parameter	Symbol	Notes/Conditions	Min	Typ	Max	Units
Operating Temperature	T _A		0		80	°C
Supply Voltage	VCC	Main Supply Voltage	3.00	3.3	3.5	V
Data Rate	R _b	Guaranteed to work at 28 Gbps per lane	0		100	Gbps
Input/output Load Resistance	R _L	AC-Coupled, Differential	90	100	110	Ω
Power Class		Programmable to Emulate all power classes	0		5.5	W

1. General Description

The ML4002-28-3dB is a QSFP28 passive electrical loopback module which is a hot pluggable form factor designed for high speed testing application for QSFP host ports. The ML4002-28-3dB is designed for 100 Gigabit Ethernet applications and provides 4x28G RX and TX lanes, I2C module management interface and all the QSFP SFF hardware signals.

The ML4002-28-3dB loops back 4-lane 28Gb/s transmit data from the Host back to 4-lane 28Gb/s receive data port to the Host.

The ML4002-28-3dB provides programmable power dissipation up to 5.5W allowing the module to emulate all the QSFP28 power classes.

2. Functional Description

2.1 Management Data Interface – I2C

The ML4002-28-3dB supports the I2C interface. This QSFP+ specification is based on the SFF8436 specification. Address 128 Page00 is used to indicate the use of the QSFP+ memory map rather than the QSFP memory map.

2.2 I2C Signals, Addressing and Frame Structure

2.2.1 I2C Frame

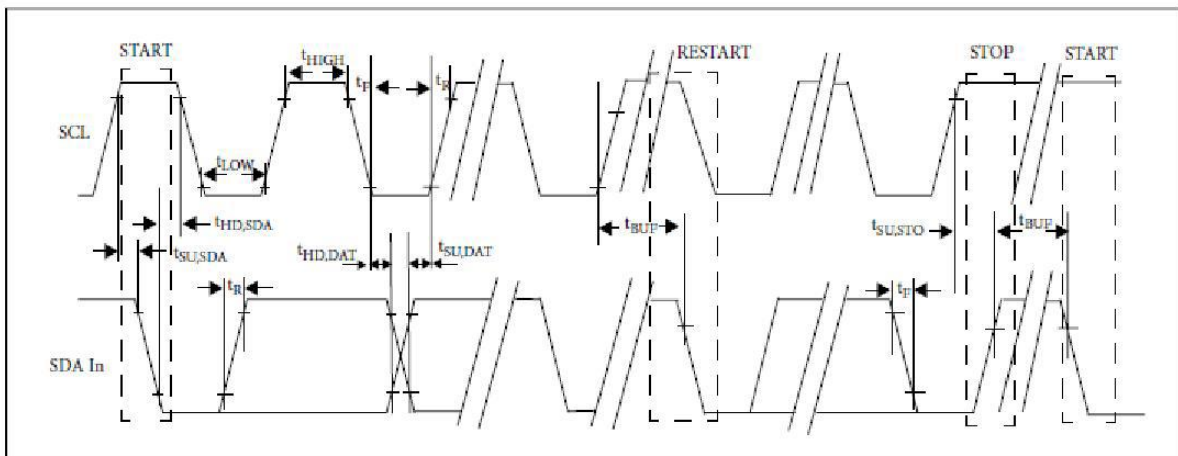


Figure 1: QSFP Timing Diagram

Before initiating a 2-wire serial bus communication, the host should provide setup time on the ModSel line of all modules on the 2-wire bus. The host should not change the ModSel line of any module until the 2-wire serial bus communication is complete and the hold time requirement is satisfied. The 2-wire serial interface address of the QSFP+ module is 1010000X (A0h). In order to allow access to multiple QSFP+ modules on the same 2-wire serial bus, the QSFP+ pinout includes a ModSel or module select pin.

This pin (which is pulled high or deselected in the module) must be held low by the host to select the module of interest and allow communication over the 2-wire serial interface. The module will not respond to or accept 2-wire serial bus instructions unless it is selected.

2.2.2 Management Timing Parameters

The timing parameters for the 2-Wire interface to the QSFP module are shown in the table below:

Parameter	Symbol	Min	Max	Unit
Clock Frequency	f_{SCL}	30	400	kHz
Clock Pulse Width Low	t_{Low}	1.2		us
Clock Pulse Width High	t_{High}	1.1		us
Time bus free before new transmission can start	t_{BUF}	20.8		us
Input Rise Time (400kHz)	$t_{R,400}$	300		ns
Input Fall Time (400kHz)	$t_{F,400}$	300		ns
ModSelL Setup Time	Host_select_setup	2		ms
ModSelL Hold Time	Host_select_hold	10		us
Serial Interface Clock Holdoff "Clock Stretching"	T_clock_hold		500	us

Maximum time the QSFP28 Module may hold the SCL line low before continuing with a read or write operation is 500us.

2.2.3 Device Addressing and Operation

Serial Clock (SCL): The host supplied SCL input to QSFP transceivers is used to positive-edge clock data into each QSFP device and negative-edge clock data out of each device.

Serial Data (SDA): The SDA pin is bi-directional for serial data transfer. This pin is open-drain or open-collector driven.

Master/Slave: QSFP transceivers operate only as slave devices. The host must provide a bus master for SCL and initiate all read/write communication.

Device Address: Each QSFP is hard wired at the device address A0h.

Multiple Devices per SCL/SDA: While QSFP transceivers are compatible with point-to-point SCL/SDA, they can share a single SCL/SDA bus by using the QSFP ModSelL line.

Clock and Data Transitions: The SDA pin is normally pulled high with an external device. Data on the SDA pin may change only during SCL low time periods. Data changes during SCL high periods

indicate a START or STOP condition. All addresses and data words are serially transmitted to and from the QSFP in 8-bit words. Every byte on the SDA line must be 8-bits long. Data is transferred with the most significant bit (MSB) first.

START Condition: A high-to-low transition of SDA with SCL high is a START condition, which must precede any other command.

STOP Condition: A low-to-high transition of SDA with SCL high is a STOP condition.

Acknowledge: After sending each 8-bit word, the transmitter releases the SDA line for one-bit time, during which the receiver is allowed to pull SDA low (zero) to acknowledge (ACK) that it has received each word. Device address bytes and write data bytes initiated by the host should be acknowledged by QSFP transceivers. Read data bytes transmitted by QSFP transceivers should be acknowledged by the host for all but the final byte read, for which the host should respond with a STOP instead of an ACK.

Memory (Management Interface) Reset: After an interruption in protocol, power loss or system reset the QSFP management interface can be reset. Memory reset is intended only to reset the QSFP transceiver management interface (to correct a hung bus). No other transceiver functionality is implied.

1. Clock up to 9 cycles
2. Look for SDA high in each cycle while SCL is high
3. Create a Start condition as SDA is high

Device Addressing: QSFP devices require an 8-bit device address word following a start condition to enable a read or write operation. The device address word consists of a mandatory sequence for the first seven most significant bits in Figure 2. This is common to all QSFP devices.

	1	0	1	0	0	0	0	R/W
MSB								LSB

Figure 2: QSFP Device Address

The eighth bit of the device address is the read/write operating select bit. A read operation is initiated if this bit is set high and a write operation is initiated if this bit is set low. Upon compare of the device address (with ModSELL in the low state) the QSFP transceiver will output a zero (ACK) on the SDA line to acknowledge the address.

module settings to their default state. Module Reset Assert Time (t_{init}) starts on the rising edge after the low level on the ResetL pin is released.

Note that when ResetL is asserted the module resets the I2C slave and will not respond to I2C master communication

For testing purpose ResetL pin state can be read via register address 145 of memory page 2. When ResetL is High, the data read from address 145 is 0x01 that reflect the pin High state, when ResetL is Low the data read from address 145 is 0xFF, due to I2C slave reset.

2.4.3 LPMode

The Module will be in low power mode if the LPMode pin is in the high state, or if the Power_override bit is in high state and the Power_set bit is also high. The module will be in high power mode if the LPMode pin is in the low state, or the Power_override bit is high and the Power_set bit is low. Note that the default state for the Power_override bit is low.

In low power mode, module will stop all power dissipation and LED changes color to red, in high power mode the power dissipation will be set to value inside register 98 and LED will be green. For testing purpose LPMode pin state can be read via register address 146 of memory page 2. The data read from address 146 will reflect the hardware signal level (1 if LPMode is high and 0 if low).

Address	Bit	Name	Description	Type
93 (Lower Page)	0	Power_override	Override of LPMode signal setting the power mode with software.	RW
	1	Power_set	Power set to low power mode. Default 0.	

A truth table for the relevant configurations of the LPMode and the Power_override and Power_set are shown in the table below:

LPMode	Power_override	Power_set	Module Power State
1	0	X	Low Power
0	0	X	High Power
X	1	1	Low Power
X	1	0	High Power

2.4.4 ModPrstL

ModPrstL is grounded in the module. The ModPrstL is asserted “Low” when the module is inserted and reasserted “High” when the module is physically absent from the host connector.

2.4.5 IntL

IntL is an output pin, when “Low”, it indicates a possible module operational fault or a status critical to the host system. The host identifies the source of the interrupt using the 2-wire serial

interface. The IntL pin is an open collector output and must be pulled to host supply voltage on the host board.

For testing purpose IntL can be set via register write to address 147 of memory page 2, by writing 1 to this address the IntL hardware signal will be set high, writing 0 to address 147 will reset IntL to low.

2.5 QSFP Memory Map

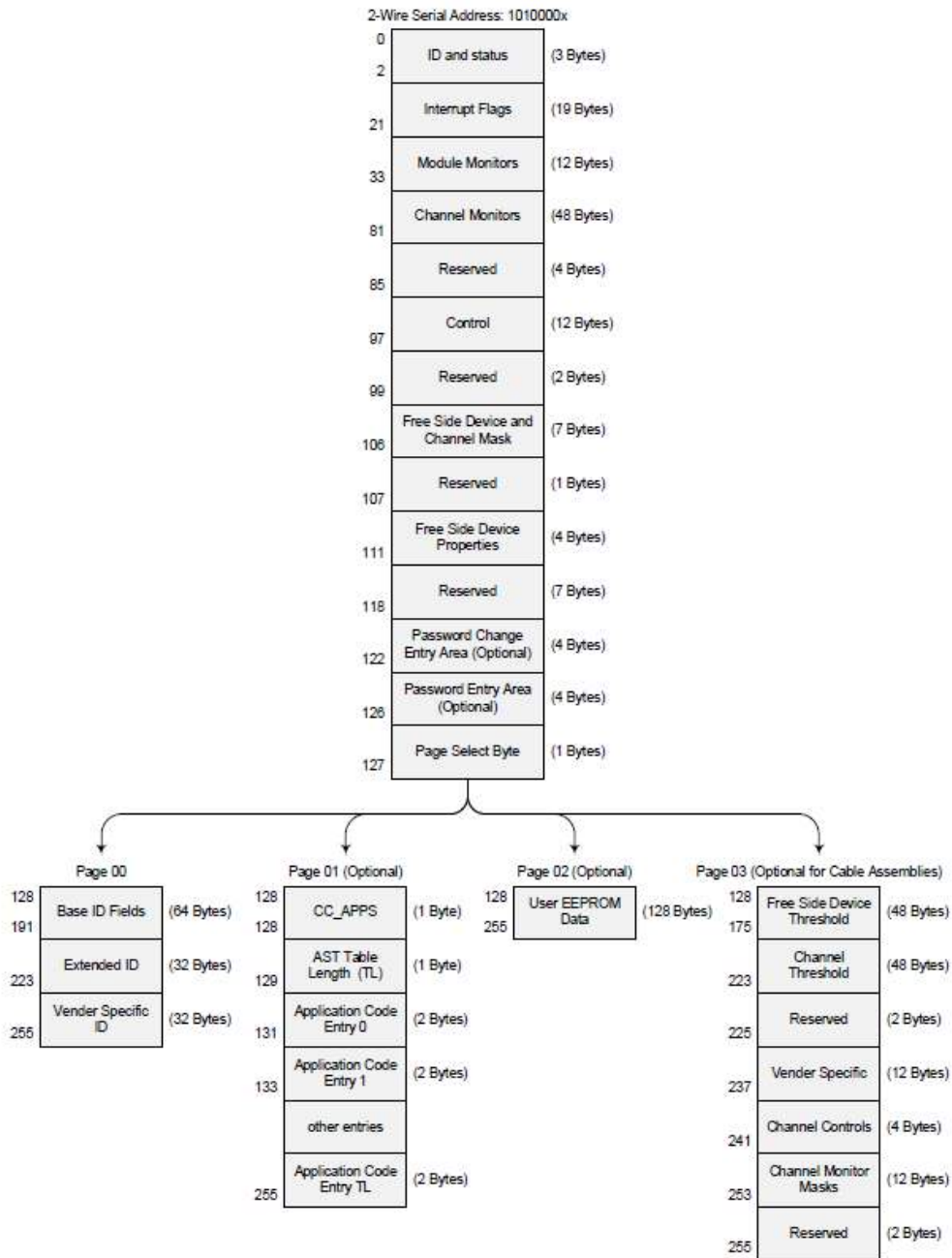


Figure 6: QSFP+ Memory Map

This section defines the Memory Map (Optional) for QSFP transceiver used for serial ID, digital monitoring and certain control functions. The interface is mandatory for all QSFP devices.

The structure of the memory is shown in Figure 6. The memory space is arranged into a lower, single page, address space of 128 bytes and multiple upper address space pages. This structure permits timely access to addresses in the lower page, e.g. Interrupt Flags and Monitors. Less time critical entries, e.g. serial ID information and threshold settings are available with the Page Select function. The structure also provides address expansion by adding additional upper pages as needed. For example, in Figure 6 upper pages 01 and 02 are optional.

Upper page 01 allows implementation of Application Select Table, and upper page 02 provides user read/write space. The lower page and upper pages 00 and 03 are always implemented.

2.6 ML4002-28-3dB Specific Functions

2.6.1 Temperature Monitor

The ML4002-28-3dB has an internal temperature sensor in order to continuously monitor the module temperature. The temperature sensor readings are present in low-memory registers 22-23 as specified by QSFP SFF. Internally measured Module temperature are represented as a 16-bit signed two's complement value in increments of 1/256 degrees Celsius, yielding a total range of -127C to +128C that is considered valid between -40 and +125C.

Address	Bit	Name	Description	Type
22	All	Temperature MSB	Internally measured module temperature	RO
23	All	Temperature LSB	Internally measured module temperature	

2.6.2 Insertion counter

The Insertion counter contains the number of times the module was plugged in a host. The insertion counter is incremented every time the module goes in initializing sequence, as it is nonvolatile it is always saved, and can be read anytime from registers 141 and 142 on memory page 2.

Address	Bit	Name	Description	Type
141	LSB	Insertion Counter LSB	LSB unit = 1 insertion	RO
142	MSB	Insertion Counter MSB		

2.6.3 Programmable Power Dissipation and Thermal Emulation

Register 98 is used for PWM control over I2C. It is an 8-bits data wide register.

The consumed power changes accordingly when the value in this register is changed (only when in high power mode). In Low power mode the module automatically turns off the power spots. The values written in this register are permanently stored. The PWM can also be used for module thermal emulation.

The module contains 3 thermal spots positioned where the optical transceivers usually are in an optical module that is heated relative to the related PWM register. Two of them are static spots. They can be turned either on or off allowing a power consumption of 0 or 100% of the

overall power. The third spot controlled using PWM, thus allowing a power consumption that covers all the range from 0 to maximum power of the spot.

The control registers of the thermal spots are shown in the table below:

Address	Bit	Power Consumption	Control Type	Memory Type
98	0:5	1 W	PWM	RW (NVR)
	6	2 W	ON/OFF	
	7	2.5 W	ON/OFF	

2.6.4 Cut-Off Temperature

To avoid overheating the module, a Cut-Off Temperature is pre-defined. The module is continuously monitoring the temperature and checking its value against the Cut-Off temperature. Once the module temperature reaches the cut-off temperature, the PWM will automatically turn off in order to prevent overheating. Once the temperature is 5 degrees below cut-off value, the PWM goes back to its previous value.

The Cut-Off temperature for the ML4002-28-3dB is 80°C.

2.6.5 Voltage Monitor

A voltage sense circuit is available in the ML4002-28-3dB that allows to measure the internal module supplied voltage Vcc.

Address	Bit	Name	Description	Type
26	All	Supply voltage MSB	Internally measured supply voltage LSB=0.1mV	RO
27	All	Supply voltage LSB		

2.6.6 Low Speed Control Signals Pin State

The low speed signal control registers are located in the memory Page02, as described below.

Name	Address	Bit number	Description
ResetL	145	0	1 if ResetL is High (145=0xFF if ResetL is Low)
LPMMode	146	0	1 if LPMMode is High and 0 if Low
IntL	147	0	Write 1b: set IntL to High Write 0b: set IntL to Low

3. QSFP28 Pin Allocation

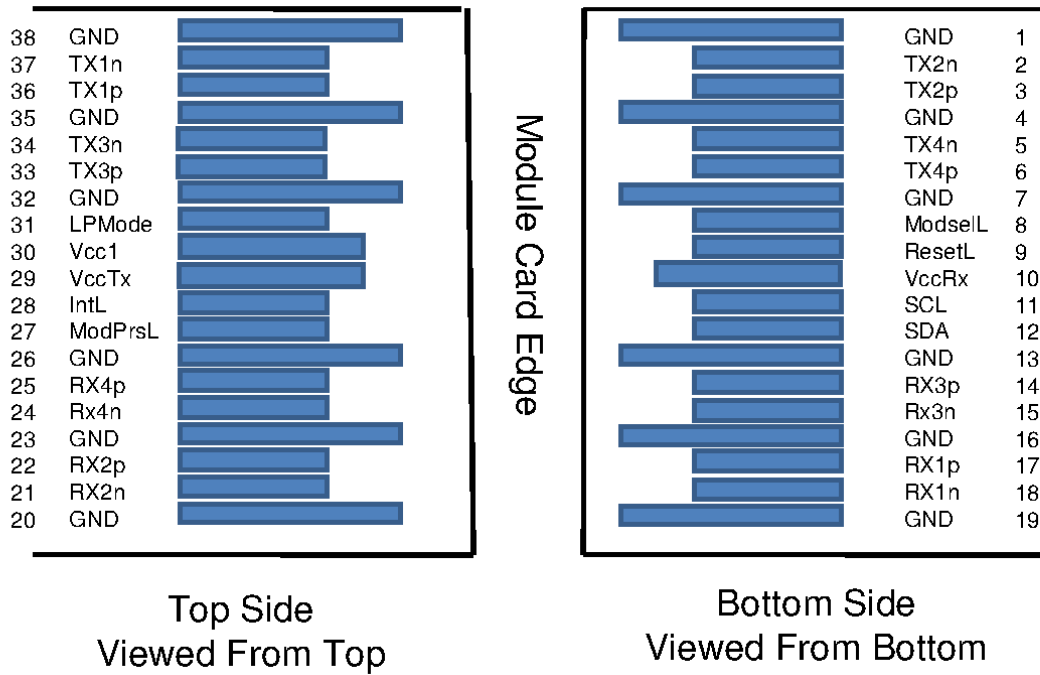


Figure 7: QSFP+ Pin Map

Pin#	Pin name	Logic	Description
1	GND		Power Ground
2	Tx2n	CML-I	Transmitter Inverted Data Input
3	Tx2p	CML-I	Transmitter Non-Inverted Data Input
4	GND		Power Ground
5	Tx4n	CML-I	Transmitter Inverted Data Input
6	Tx4p	CML-I	Transmitter Non-Inverted Data Input
7	GND		Power Ground
8	ModSelL	LVTTTL I	Module Select
9	ResetL	LVTTTL I	Module Reset
10	Vcc Rx		+3.3 V Power supply receiver
11	SCL	LVC MOS - I/O	2-wire serial interface clock
12	SDA	LVC MOS - I/O	2-wire serial interface data
13	GND		Power Ground
14	Rx3p	CML-O	Receiver Non-Inverted Data Output
15	Rx3n	CML-O	Receiver Inverted Data Output
16	GND		Power Ground
17	Rx1p	CML-O	Receiver Non-Inverted Data Output
18	Rx1n	CML-O	Receiver Inverted Data Output
19	GND		Power Ground
20	GND		Power Ground
21	Rx2n	CML-O	Receiver Inverted Data Output

22	Rx2p	CML-O	Receiver Non-Inverted Data Output
23	GND		Power Ground
24	Rx4n	CML-O	Receiver Inverted Data Output
25	Rx4p	CML-O	Receiver Non-Inverted Data Output
26	GND		Power Ground
27	ModPrsl	LVTTTL O	Module Present
28	IntL	LVTTTL O	Interrupt
29	Vcc Tx		+3.3 V Power supply transmitter
30	Vcc1		+3.3 V Power Supply
31	LPMode	LVTTTL I	Low Power Mode
32	GND		Power Ground
33	Tx3p	CML-I	Transmitter Non-Inverted Data Input
34	Tx3n	CML-I	Transmitter Inverted Data Input
35	GND		Power Ground
36	Tx1p	CML-I	Transmitter Non-Inverted Data Input
37	Tx1n	CML-I	Transmitter Inverted Data Input
38	GND		Power Ground

Revision History

Revision number	Date	Description
0.1	2/21/2020	<ul style="list-style-type: none">▪ Preliminary
0.2	2/24/2020	<ul style="list-style-type: none">▪ Add section 2.5.2 and 2.5.4▪ Specify registers addresses for some of the features
0.3	10/29/2020	<ul style="list-style-type: none">▪ Update Format.▪ Update section 2.6.3: power spots control and values▪ Update section 2.6.5: Voltage monitor registers

North America

48521 Warm Springs Blvd. Suite 310
Fremont, CA 94539
USA
+1 510 573 6388

Worldwide

Houmal Technology Park
Askarieh Main Road
Houmal, Lebanon
+961 81 794 455

Asia

14F-5/ Rm.5, 14F., No 295
Sec.2, Guangfu Rd. East Dist.,
Hsinchu City 300, Taiwan (R.O.C)
+886 3 5744 591