

PART NUMBER	REV	FIRST USED	TERMINATOR	FEED TYPE	DESCRIPTION
1426190-1	C	-	LEADMAKER	MECH POST FEED	CUTS CARRIER
1426190-2	C	-	BENCH	MECH PRE FEED	CUTS CARRIER
1426190-6	C	-	LEADMAKER	MECH POST FEED	CONTINUOUS CARRIER
7-1426190-1	C	-	LEADMAKER	MECH POST FEED	-1 AND SPARE PARTS
7-1426190-2	C	-	BENCH	MECH PRE FEED	-2 AND SPARE PARTS
7-1426190-6	C	-	LEADMAKER	MECH POST FEED	-6 AND SPARE PARTS
7-1426190-7	A	-	-	-	SPARE PARTS KIT

CRIMP DATA AMP TERMINAL AMP CRIMP SPECS

CRIMP	SIZE	TYPE	RANGE
WIRE	2.29 [.090 IN]	F	0.30-1.00mm <sup>2</sup>
INSUL	3.56 [.140 IN]	F	1.52-3.05 [.060-.120 IN]

WIRE STRIP LENGTH	APPL INSTRUCTION
3.96-4.75 [.156-.187 IN]	408-8322

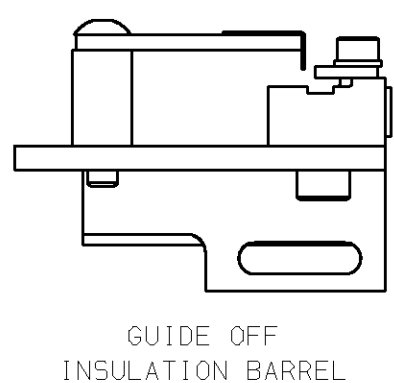
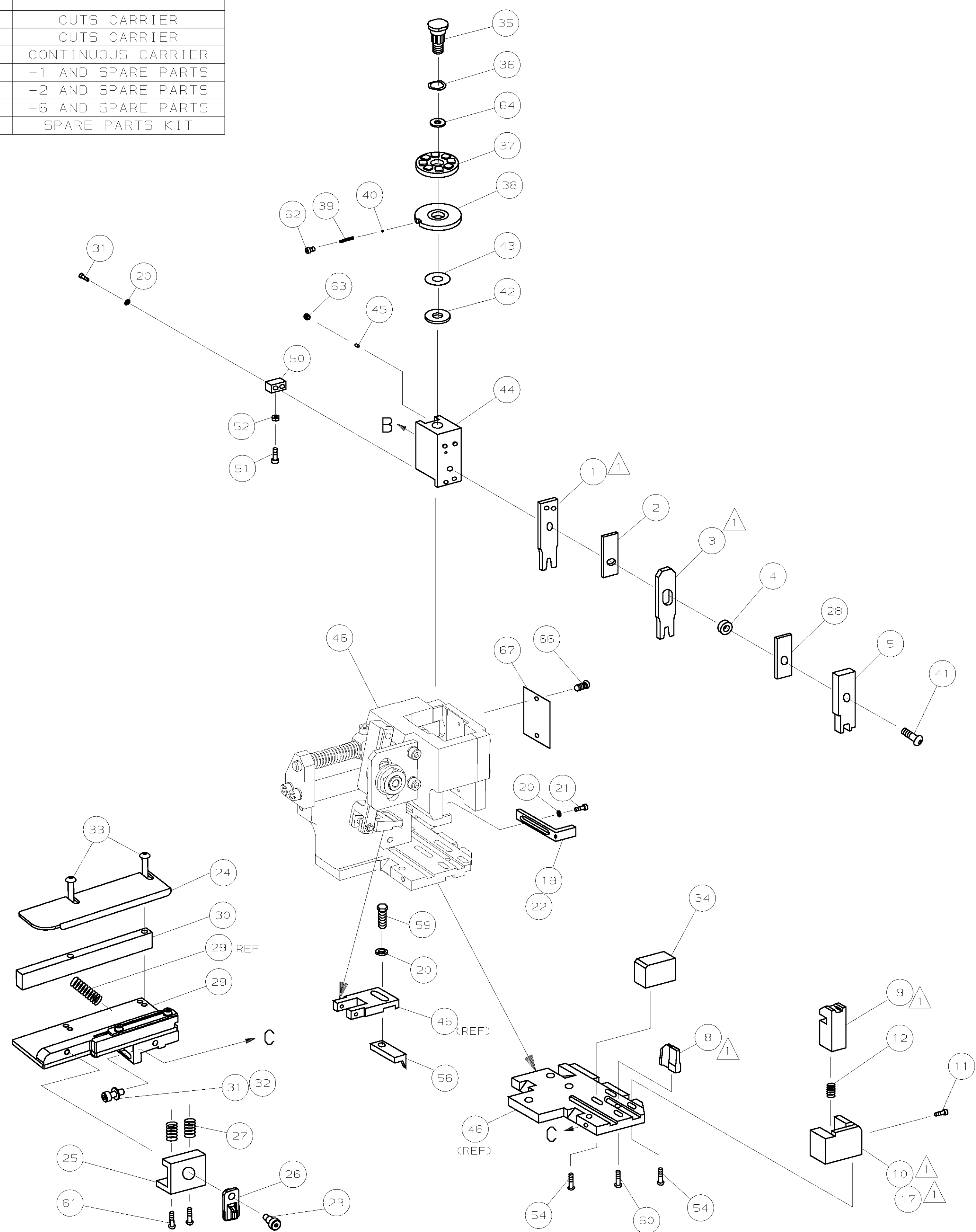
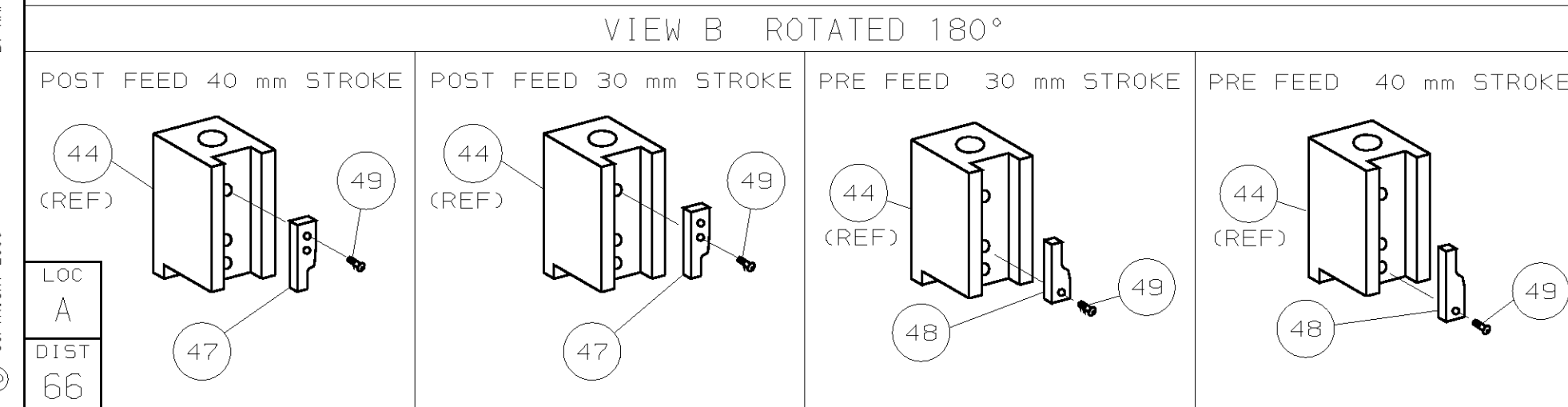
TERMINAL	FEED
APPL SPEC 114-20003	10.00 [.394 IN]

TERMINALS APPLIED

TERMINAL	REV	FIRST USED	TERMINATOR	FEED TYPE	DESCRIPTION
281622	-	-	-	-	-
281623	-	-	-	-	-
-	-	-	-	-	-
-	-	-	-	-	-
-	-	-	-	-	-
-	-	-	-	-	-
-	-	-	-	-	-
-	-	-	-	-	-
-	-	-	-	-	-
-	-	-	-	-	-

WIRE SIZE	CRIMP HEIGHT	PIN PN AND LENGTH [IN]
1.00mm <sup>2</sup>	1.47 ±0.05 [.058 ±.002 IN]	354779-6 [.3020]
0.75mm <sup>2</sup>	1.37 ±0.05 [.054 ±.002 IN]	1-354779-6 [.3070]
0.50mm <sup>2</sup>	1.27 ±0.05 [.050 ±.002 IN]	2-354779-5 [.3115]
0.30mm <sup>2</sup> or 0.35mm <sup>2</sup>	1.22 ±0.05 [.048 ±.002 IN]	2-354779-9 [.3135]

- RECOMMENDED SPARE PARTS.
- GREASE RAM, CAM, CAM FOLLOWER AND FEED ROD LIGHTLY.
  - LUBRICATE DAILY PER THE APPLICATOR INSTRUCTION SHEET SUPPLIED WITH THE APPLICATOR.



QTY	REV	FIRST USED	TERMINATOR	FEED TYPE	DESCRIPTION	ITEM NO			
-	1	1	1	1	1	1	1426190	PRINT, APPLICATOR LOG SHEET	73
-	1	1	1	1	1	1	1338705-1	DOCUMENTATION PACKAGE	71
-	-	-	-	-	-	-	-	-	70
-	-	-	-	-	-	-	-	-	69
-	-	-	-	-	-	-	-	-	68
-	1	1	1	1	1	1	461264-1	PLATE, IDENTIFICATION	67
-	2	2	2	2	2	2	21017-2	SCR,DRIVE (#2x.19) ID PLATE	66
-	-	-	-	-	-	-	-	-	65
-	1	1	1	1	1	1	986950-1	WASHER, FLAT PRECISION	64
-	1	1	1	1	1	1	3-18031-0	SCR,SKT 5ET (M6X6) RAM	63
-	1	1	1	1	1	1	18023-9	SCR,SHC (M4X6) INS DISC	62
-	2	2	2	2	2	2	1-18024-5	SCR,BHC (M5X25) DRAG	61
-	1	1	1	1	1	1	18024-7	SCR,BHC (M4X10) ANVIL	60
-	1	1	1	1	1	1	5-18022-2	SCR,HEX (M4X8) FEED FINGER	59
-	-	-	-	-	-	-	-	-	58
-	-	-	-	-	-	-	-	-	57
-	1	1	1	1	1	1	1338685-1	PAWL, FEED	56
-	-	-	-	-	-	-	-	-	55
-	4	4	4	4	4	4	18024-8	SCR,BHC (M4X12) SHEAR HOLDER	54
-	-	-	-	-	-	-	-	-	53
-	1	1	1	1	1	1	18030-1	NUT, HEX (M3) HOLD DOWN	52
-	1	1	1	1	1	1	811242-5	BUMPER, HOLDDOWN	51
-	1	1	1	1	1	1	690753-2	SPACER, TONKER	50
-	1	1	1	1	1	1	18024-3	SCR,BHC (M3X10) CAM	49
-	-	-	-	-	-	-	-	-	48
-	1	-	1	1	-	-	1338675-1	CAM, PRE FEED 30 & 40 mm ST	47
-	1	-	1	1	-	-	1338676-1	CAM, POST FEED 30 & 40 mm ST	47
-	1	1	1	1	1	1	1320999-3	APPLICATOR BASIC SUBASSY	46
-	1	1	1	1	1	1	690191-1	PLUG, NYLON	45
-	1	1	1	1	1	1	1338660-1	RAM	44
-	1	1	1	1	1	1	690125-1	WASHER, LAMINATED	43
-	1	1	1	1	1	1	690124-1	WASHER, RAM	42
-	1	1	1	1	1	1	2-18024-6	SCR,BHC (M8X25) RAM	41
-	1	1	1	1	1	1	23241-1	BALL, STEEL	40
-	1	1	1	1	1	1	2-22278-7	SPRING, COMPRESSION	39
-	1	1	1	1	1	1	1320922-1	DISC, INSULATION	38
-	1	1	1	1	1	1	354777-1	WIRE DISC, PLASTIC	37
-	1	1	1	1	1	1	22480-5	WASHER, SPRING	36
-	1	1	1	1	1	1	690212-1	POST, RAM	35
-	1	1	1	1	1	1	1320934-1	SUPPORT, TERMINAL	34
-	2	2	2	2	2	2	1-18024-0	SCR,BHC (M4X20) STRIP GUIDE	33
-	1	1	1	1	1	1	18027-2	WASHER, FLAT (M4)	32
-	3	3	3	3	3	3	1-18023-2	SCR,SKT CAP (M4X12) MOUNT BLOCK	31
-	1	1	1	1	1	1	1320908-1	SPACER, STRIP GUIDE	30
-	1	1	1	1	1	1	1633073-1	STRIP GUIDE PLATE ASSY	29
-	1	1	1	1	1	1	1-455888-1	SPACER, FRONT SHEAR DEP	28
-	2	2	2	2	2	2	1-22284-0	SPRING, DRAG	27
-	1	1	1	1	1	1	356835-1	LEVER, DRAG RELEASE	26
-	1	1	1	1	1	1	240792-1	DRAG, TERMINAL	25
-	1	1	1	1	1	1	1320928-1	PLATE, STRIP GUIDE	24
-	1	1	1	1	1	1	980371-4	SCR,SHC SHLD	23
-	1	-	1	1	-	1	690472-2	STRIPPER	22
-	1	1	1	1	1	1	1-18023-1	SCR,SHC (M4X10) STRIPPER	21
-	4	4	4	4	4	4	18025-2	WASHER, LOCK (M4) STRIPPER	20
-	-	1	-	-	1	-	690472-1	STRIPPER	19
-	-	-	-	-	-	-	-	-	18
-	1	-	-	1	-	-	1338684-1	HOLDER, SHEAR, FRONT (NO-CUT)	17
-	-	-	-	-	-	-	-	-	16
-	-	-	-	-	-	-	-	-	15
-	-	-	-	-	-	-	-	-	14
-	-	-	-	-	-	-	-	-	13
-	1	1	1	1	1	1	5-22280-0	SPRING, SHEAR	12
-	1	1	1	1	1	1	356885-4	STOP, SHEAR	11
-	-	1	1	-	1	1	1320921-1	HOLDER, SHEAR, FRONT (CUT)	10
-	1	1	1	1	1	1	454276-1	SHEAR, FLOAT (FRONT)	9
-	1	2	2	2	1	1	2-1333205-4	ANVIL	8
-	-	-	-	-	-	-	-	-	7
-	-	-	-	-	-	-	-	-	6
-	1	1	1	1	1	1	1-455889-4	DEPRESSOR, SHEAR (FRONT)	5
-	1	1	1	1	1	1	238011-7	SPACER, BLOCK CRIMPER	4
1	2	2	2	1	1	1	5-683453-1	CRIMPER, INSULATION	3
-	1	1	1	1	1	1	455888-5	SPACER, CRIMPER	2
1	2	2	2	1	1	1	3-456406-0	CRIMPER, WIRE	1
-77	-76	-72	-71	-6	-2	-1	PART NO	DESCRIPTION	ITEM NO

DIMENSIONS: mm [INCHES] MATL - HT TR - FIN - DO NOT SCALE PRINT. TOLERANCES UNLESS OTHERWISE SPECIFIED. 1 PLC DEC ±0.5 [.02 IN] 2 PLC DEC ± 3 PLC DEC ± - ANGLES ± - SURF TEXTURE: ✓ REMOVE BURRS, BREAK SHARP EDGES RO.38 MAX

C	0150-0782-03	RK	JUL03
B	0150-0478-03	BH	MAY03
A	SEE ECN 015A-0414-01	MC	MAY01

REVISION RECORD

DR	11APR01	APP	11APR01	F.BACKHURST	M.CLIFFORD
CHK	-	REL	18-05-01	M.CLIFFORD	-

AMP Incorporated Harrisburg, PA 17105-3608

NAME: SIDE FEED HD-I APPLICATOR MACHINE REF: HD-I APPL

SCALE: - DWG NO: 1426190 SHEET 1 OF 1 REV C

CAGE CODE: 00779 CUSTOMER AND ASSEMBLY DRAWING