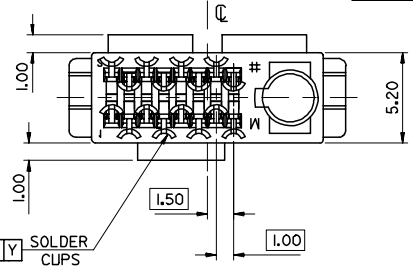
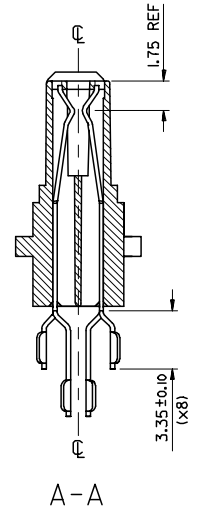
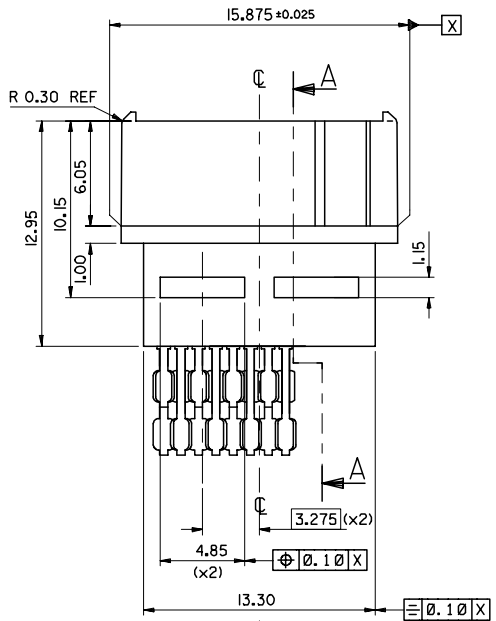
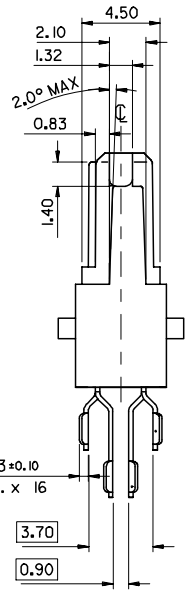
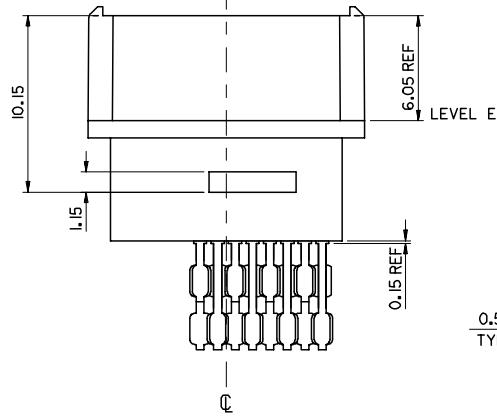


NOTE 4
 $\phi \ 0.05 \ X \ Y$ $\phi \ 2.75 \pm 0.03$



- NOTES:-
 1. MATERIALS: HOUSING: POLYAMIDE (PA46), 45% GLASS FILL, UL94 V-0
 COLOUR : BLACK AS PER THE FOLLOWING 89992-0058
 SIGNAL CONTACTS: 0.25 THICK PHOSPHOR BRONZE
 2. PLATING: OVERALL NI UNDERCOAT
 CONTACT AREA: Au FLASH ON PdNi
 SOLDER CUP AREA: Sn
 3. PARTS TO BE PACKAGED IN TUBES 99024-0037
 4. DIMENSIONS TO BE TAKEN AT LEVEL E
 5. SEE PRODUCT SPECIFICATION No. PS-99020-0086.

MODIFY MATERIAL	EC NO: E2006-1163	2006/08/02
	DRWN:FDUGGAN	2006/08/11
	CHKD:	
	APPR:EFOLAN	2006/08/21
REV	DESCRIPTION	

QUALITY SYMBOLS	GENERAL TOLERANCES (UNLESS SPECIFIED)	DIMENSION STYLE
$\nabla=0$	mm INCH	MM ONLY
$\nabla=0$	4 PLACES ± --- ± ---	SCALE
	3 PLACES ± 0.05 ± ---	5:1
	2 PLACES ± 0.05 ± ---	DESIGN UNITS
	1 PLACE ± 0.10 ± ---	METRIC
	ANGULAR ± 1/2°	THIRD ANGLE PROJECTION
	DRAFT WHERE APPLICABLE MUST REMAIN WITHIN DIMENSIONS	

DRAWN BY	DATE	TITLE
CTOBIN	1999/09/27	SYSTEM CONNECTOR PLUG ASSEMBLY
CHECKED BY	DATE	
DBRENNAN	1999/09/27	
APPROVED BY	DATE	
MWILHITE	1999/09/27	
MATERIAL NO.	DOCUMENT NO.	
91062-1005	SD-91062-002	

SIZE	THIS DRAWING CONTAINS INFORMATION THAT IS PROPRIETARY TO MOLEX INCORPORATED AND SHOULD NOT BE USED WITHOUT WRITTEN PERMISSION	SHEET NO.
A2		1 OF 2