



# General Electronic Devices

Makers of active and passive components  
 Quartz Crystal \* Oscillators \* Synthesizer \* Filters  
 Micro-Hybrid Assembly Services

## SMD914E.3B-ED-156.250MHz

Surface Mount-9x14mm Ceramic Package  
 6-"J" lead Oscillator  
 Output: Differential PECL  
 Operating Voltage: 3.3V

Electrical Specifications

This device is Lead free / ROHs compliant

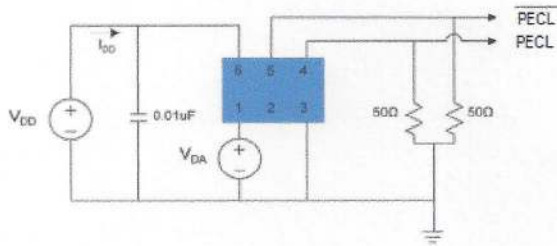
Item		Symbol	Specification	
Output frequency		fo	156.250MHz	
Power source voltage	Operating voltage	Vcc	3.3V ± 0.3 V	
Temperature range	Storage temperature	TSTG	-55 °C to +125 °C	
	Operating temperature	TOPR	0 °C to +70 °C	
Frequency Tolerance			± 20ppm @ 25°C	
Frequency Stability		f/fo	50ppm	
Current consumption		Icc	80mA Max.	
Output disable current		IOE	20 mA Max.	
Duty		T <sub>wt</sub>	45% to 55%	
Output voltage		V	Vol: 1.7V	Voh: 2.2V
Output load condition		RL	124 ohms output to vdd; 82 ohms output to ground	
Output enable input voltage		V <sub>ih</sub>	70% Vcc Min.	
Output disable input voltage		V <sub>il</sub>	30% Vcc Max	
Output rise fall time		t <sub>f</sub> / t <sub>r</sub>	400 ps Max.	
Oscillator start up time		t <sub>osc</sub>	10 ms Max.	
Jitter *4		t <sub>RJ</sub>	3 ps Typ.	
		t <sub>RMS</sub>	3 ps Typ.	
		T <sub>p-p</sub>	25 ps Typ.	
Phase jitter		T <sub>PJ</sub>	2.5 ps Max.	
Phase Noise			-120dbc/Hz Typ.	



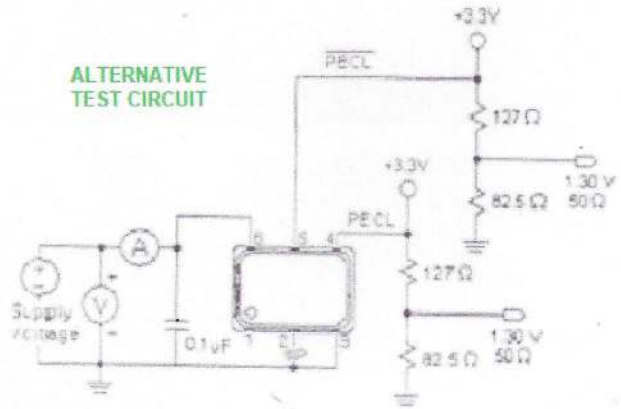
# General Electronic Devices

Makers of active and passive components  
 Quartz Crystal \* Oscillators \* Synthesizer \* Filters  
 Micro-Hybrid Assembly Services

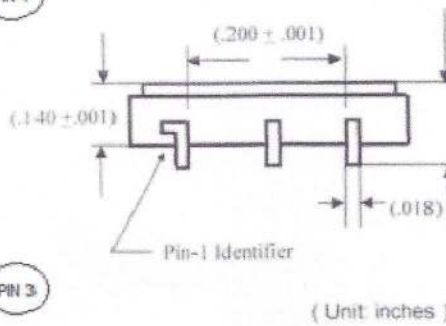
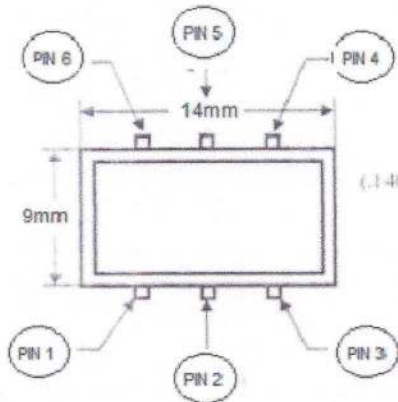
TEST CIRCUIT



ALTERNATIVE TEST CIRCUIT



## DRAWING OUTLINE



PIN CONFIGURATION	
Pin 1	N/C or High Enable
Pin 2	N/C or High Enable
Pin 3	GND
Pin 4	OUTPUT
Pin 5	OUTPUT
Pin 6	VDD

(Unit: inches)



# General Electronic Devices

Makers of active and passive components  
Quartz Crystal \* Oscillators \* Synthesizer \* Filters  
Micro-Hybrid Assembly Services

## PART NUMBERING GUIDE

