

# Brad Direct-Link SW1000 Software

## EtherNet TCP/IP



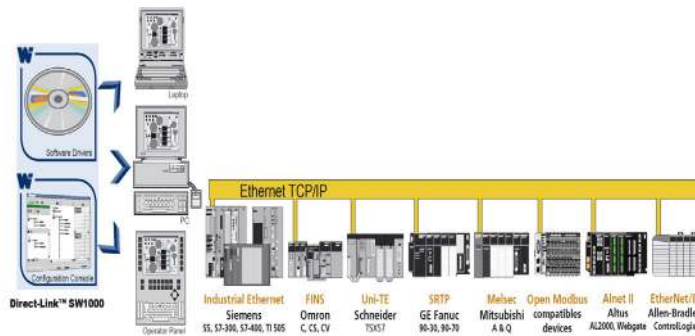
### Direct-Link SW1000 software packages provide cost-effective, easy-to-use and reliable data exchange for industrial devices connected to Ethernet TCP/IP and Serial networks

Well adapted for embedded environments, Direct-Link SW1000 software packages are used by operator interface manufacturers and OEM equipment manufacturers needing to make their computerized systems communicate. Ideally suited for small and medium-sized applications with low time constraints, Direct-Link software solutions are widely adopted for technical management in the building sector, electrical installations, and Test and Measurement applications.

### Features and Advantages

**Complete software package for Windows PC-based applications (HMI, SCADA, MES, RDBM, customer developments and more)**  
Enables fast integration of industrial communication into applications

**Available in Windows 32-bit and 64-bit (WoW64 subsystem)**  
Provides reliable data exchange with plant floor



**Uses standard computer resources to collect (Ethernet port)**  
Ideally suited for embedded and light architecture (laptops, panel PCs, operator interfaces and workstations)

**Supports multi-Ethernet TCP/IP protocols simultaneously**  
Offers economical and easy-to-use software



### Protocols

#### Ethernet TCP/IP

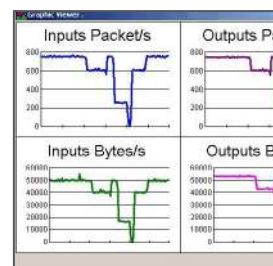
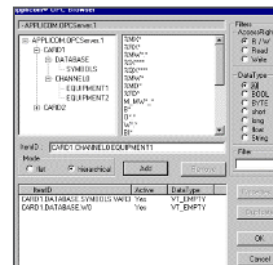
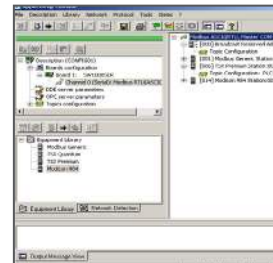
- All protocols can run simultaneously
- Allen-Bradley – PCCC and Logix5000 messaging (for ControlLogix and FlexLogix)
- Altus – Alnet II (AL2000 and Webgate series)
- Alstom – SRTP (Alspa C80-35 and C80-75 Series)
- GE Fanuc – SRTP (90-30 and 90-70 Series)
- Mitsubishi – Melsec (A and Q Series)
- Omron – FINS (C, CV and CS Series)
- Schneider – Open Modbus TCP/UDP (Premium and Quantum Series)
- Schneider – Uni-TE (Micro and Premium)
- Siemens – Industrial Ethernet (S5, S7 and TI-505 Series)
- Send/Rec on UDP

#### Data Servers

- OPC DA v3.0, 2.05 and 1.0a
- Library DLL

#### Supported OS

- Windows 32-bit and 64-bit (WoW64 subsystem)
- 2016 Server
- Windows 10
- 2012 Server
- Windows 8/8.1
- 2008 Server
- Windows 7
- 2003 Server



OPC Browser

# Brad Direct-Link SW1000 Software

EtherNet TCP/IP



## Ordering Information

Order No.	Engineering No.	Type of Protection	Tags	Protocols Included	Product Description
112027-0005	DRL-ALL-SWL-S	Software Key	Ethernet TCP/IP 1000 Tags	All protocols and data servers	Direct-Link SW1000 software package
112027-0006	DRL-ALL-SWL-U	Dongle for USB Port			
112027-0002	DRL-ALL-SWF-S	Software Key	Ethernet TCP/IP Full Tags	Siemens protocols (S5, S7, TI) and data servers	
112027-0003	DRL-ALL-SWF-U	Dongle for USB Port			
112027-5014	DRL-SIE-SWF-S	Software Key			
112027-5015	DRL-SIE-SWF-U	Dongle for USB Port			

[www.molex.com/link/stacks.html](http://www.molex.com/link/stacks.html)

Molex is a registered trademark of Molex, LLC in the United States of America and may be registered in other countries; all other trademarks listed herein belong to their respective owners.