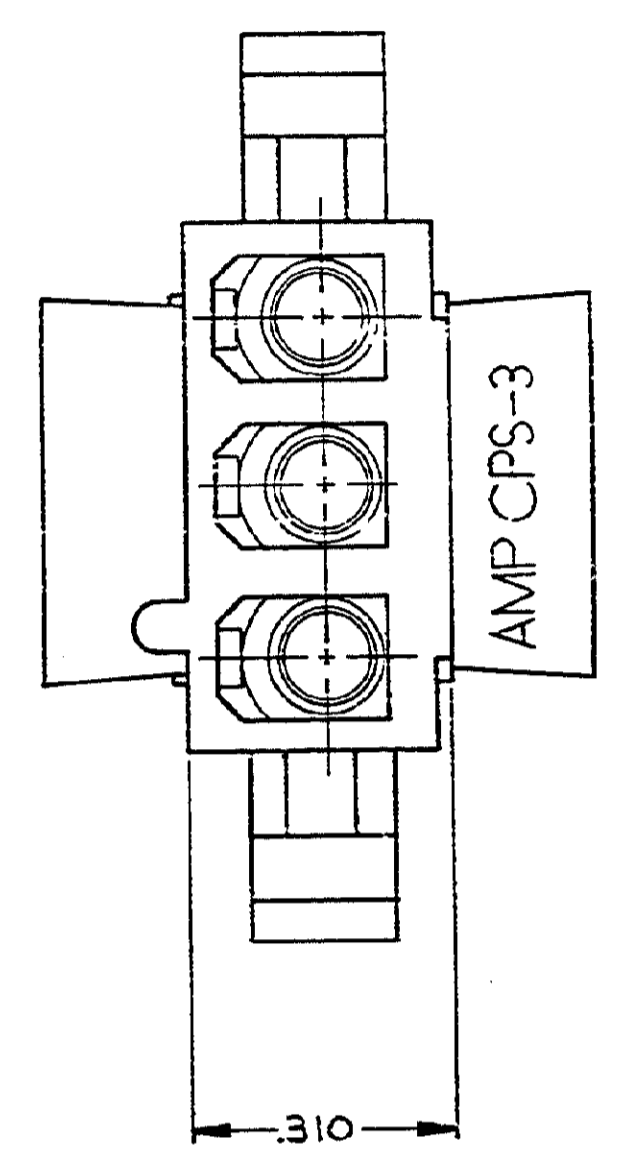
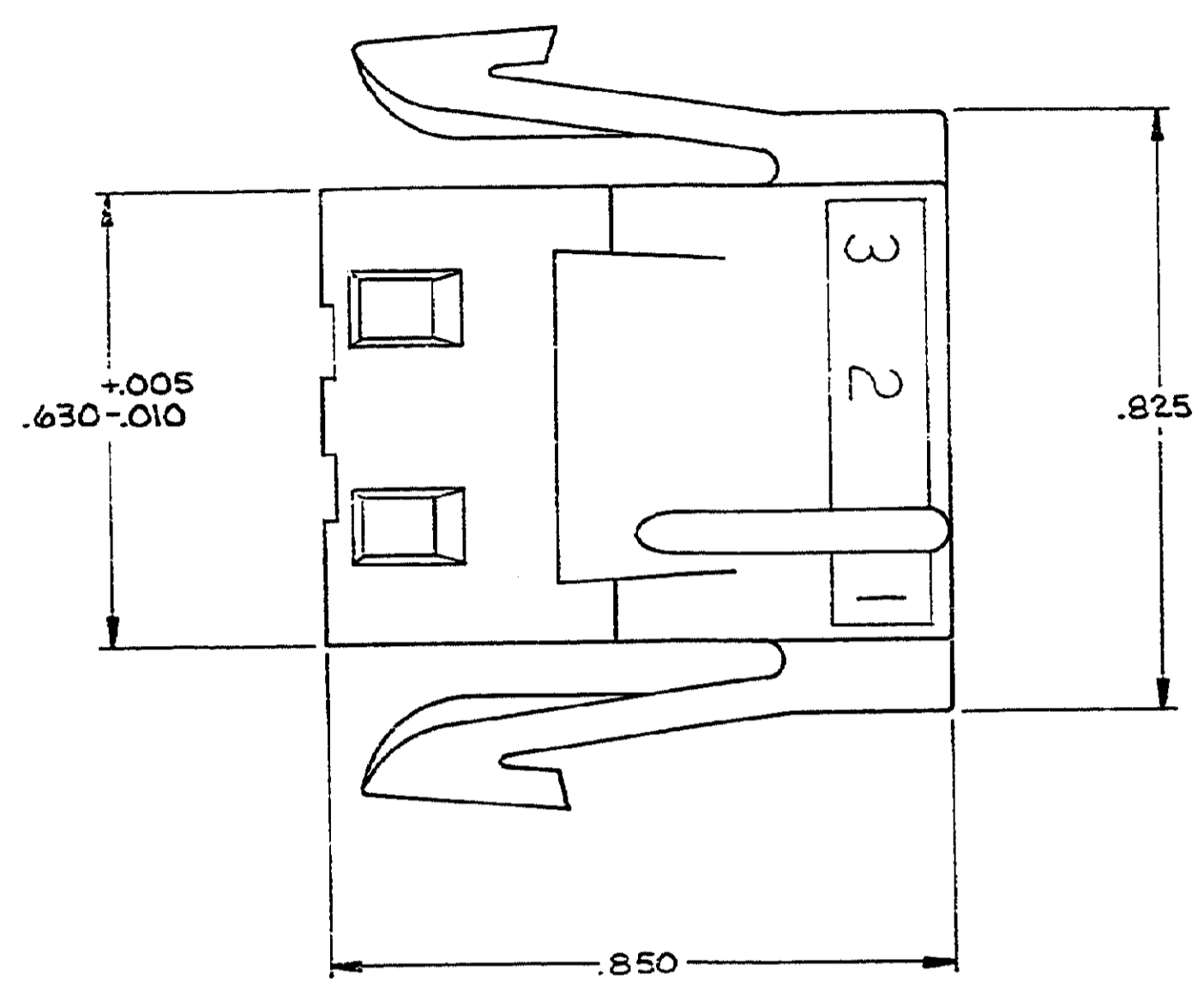
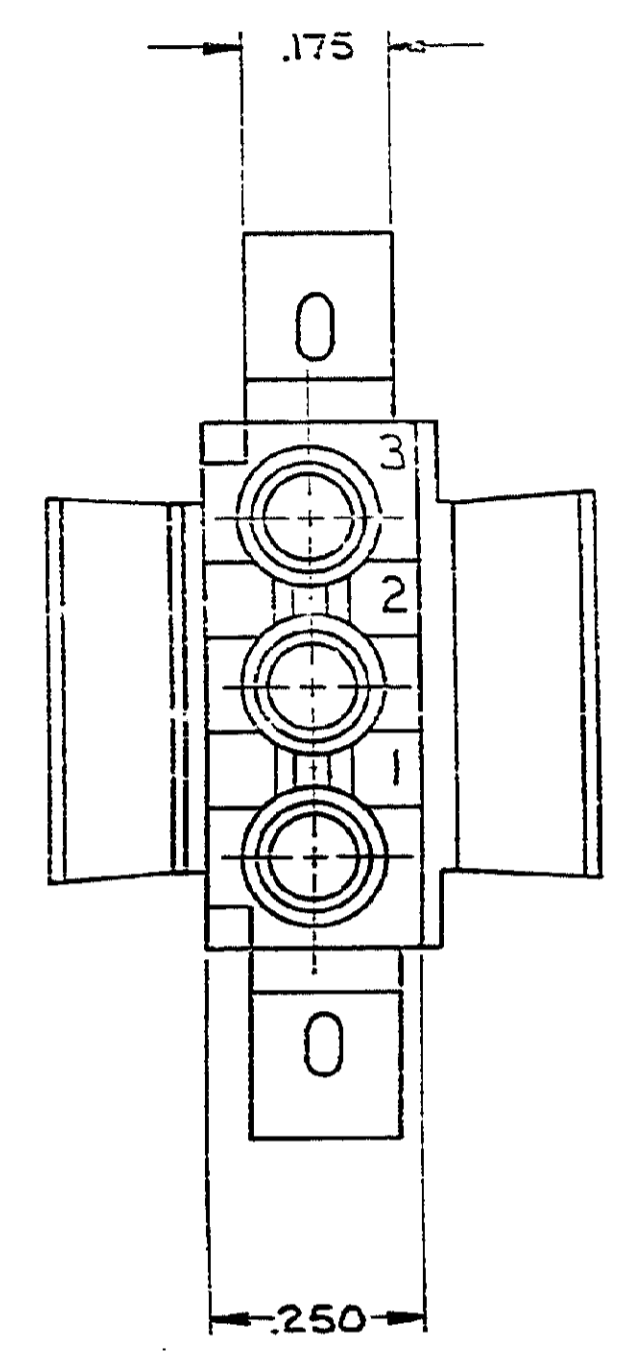
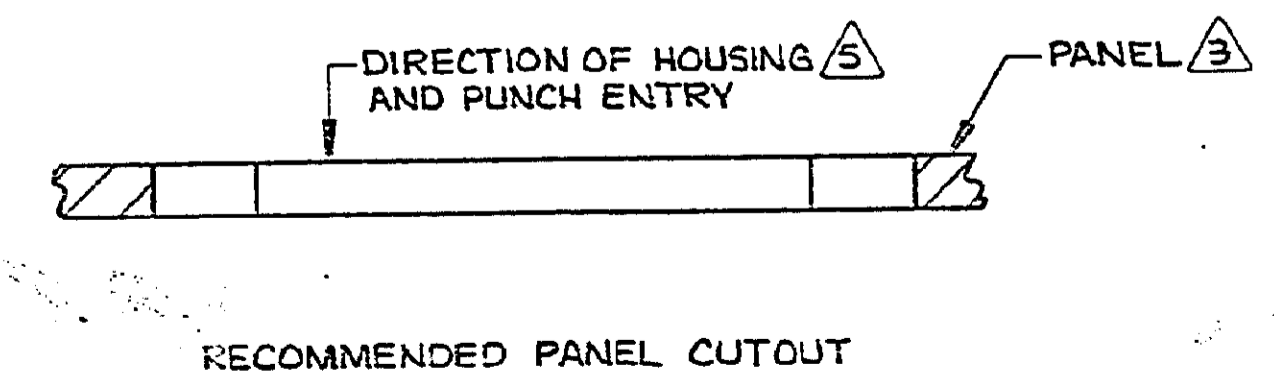
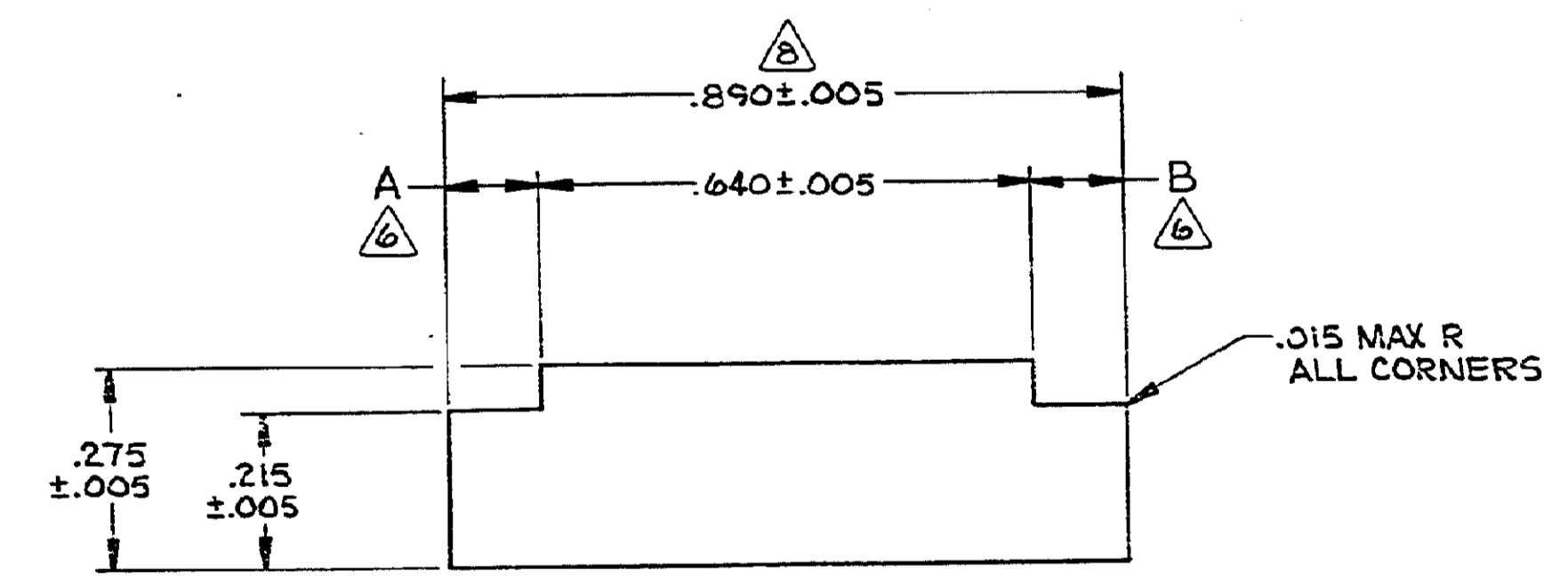


REVISIONS				LOGS
NO.	ZONE	DATE	DESCRIPTION	APPROVED
1	U1	11APR11	REVISED PER ECO-11-005294	HMR



1. MATES WITH CAP PART NUMBER 480305.
2. ACCEPTS MATE-N-LOK SOCKET CONTACTS.
3. RECOMMENDED PANEL THICKNESS .025-.065.
4. BOTH LOCKING LEGS TO BE SQUEEZED TOGETHER AND HOUSING TO BE INSERTED "STRAIGHT-IN" AS OPPOSED TO A ROCKING MANNER OF INSERTION.
5. PANEL MUST BE PUNCHED SO THAT THE HOUSING ENTERS THE PANEL IN THE SAME DIRECTION AS THE PUNCH.
6. DIMENSIONS A AND B TO BE EQUAL WITHIN .005.
7. PANEL MUST NOT HAVE ANY MATERIAL (PAINT, PORCELAIN, ETC.) APPLIED IN THE MOUNTING HOLE AREA THAT WOULD DECREASE RETENTION OF THE HOUSING IN THE PANEL.
8. IF NOTES 5 AND/OR 7 ARE NOT COMPLIED WITH, THE .890 DIMENSION SHOULD BE REDUCED TO .880 TO ASSURE PROPER HOUSING RETENTION IN THE PANEL.



UNLESS OTHERWISE SPECIFIED DIMENSIONS ARE IN INCHES. TOLERANCES ON: DECIMALS ± .010 ANGLES =		CONTRACT NO.		NATURAL	
MATERIAL		DR <i>White</i> 5-30-86		NYLON, UL94V-2	
FINISH		CHK <i>R. Sherry</i> 6-3-86		1-480304-0	
OTHER APPD		APPD <i>M. Sherry</i> 6-3-86		COLOR MATERIAL PART NO	
DGS, APPD		APPD		STE TE Connectivity	
OTHER APPD		APPD		NAME	
SIZE		FSCM NO		DRAWING NO.	
D		00779		480304	
SCALE 5:1		SHEET 1 OF 1		PLUG, 3 CIRCUIT, MATE-N-LOK™	