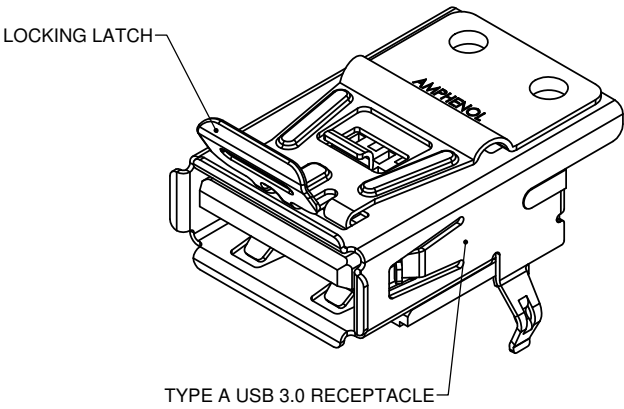
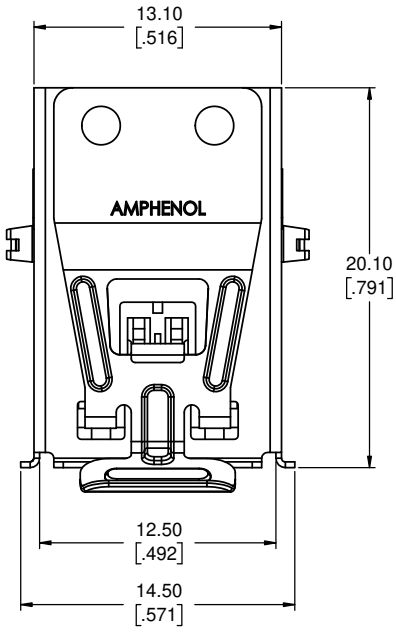
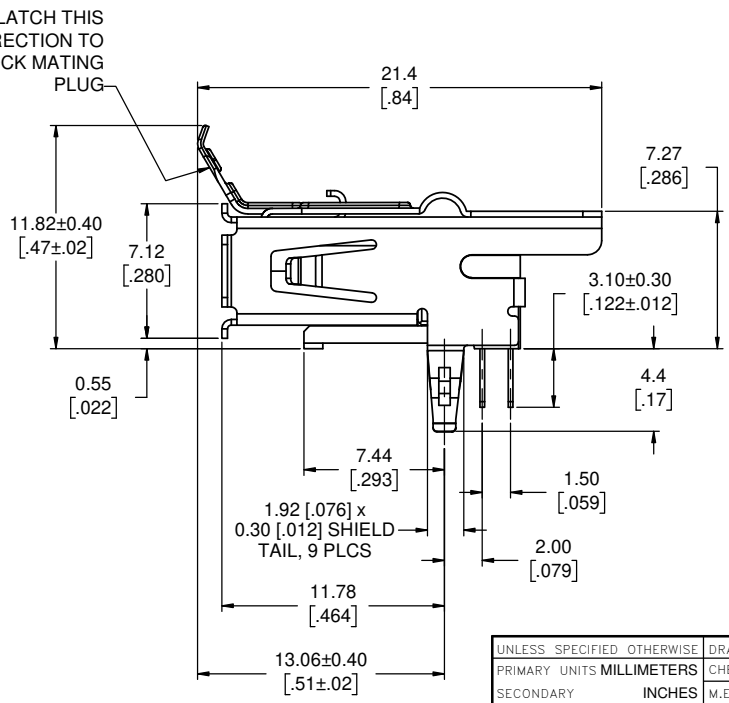
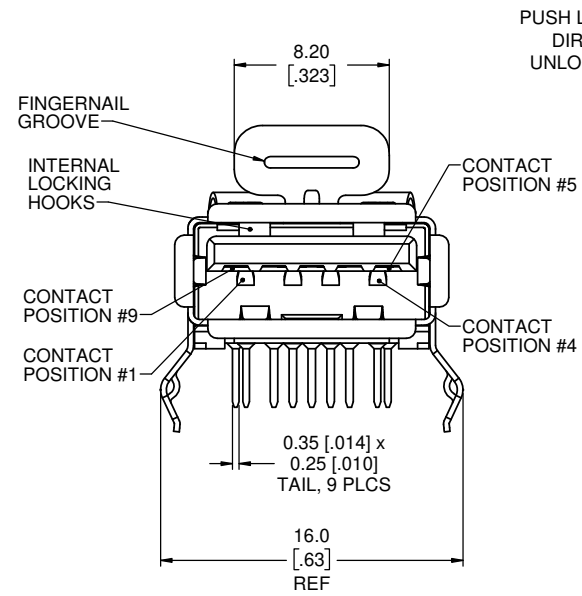


| REVISIONS | | | |
|-----------|-----------------------------|----------|-------|
| REV | DESCRIPTION, ECN, EAR NO. | DATE | APP'D |
| B | PRODUCT DRAWING (EAR 14331) | JAN21/15 | K.L. |
| C | PRODUCT DRAWING (EAR 14417) | NOV24/16 | K.L. |



| USB 3.0 STANDARD-A CONNECTOR PIN ASSIGNMENTS | | |
|--|-------------|--|
| PIN NUMBER | SIGNAL NAME | DESCRIPTION |
| 1 | VBUS | POWER |
| 2 | D- | USB 2.0 DIFFERENTIAL PAIR |
| 3 | D+ | |
| 4 | GND | GROUND FOR POWER RETURN |
| 5 | StdA_SSRX- | SUPERSPEED RECEIVER DIFFERENTIAL PAIR |
| 6 | StdA_SSRX+ | |
| 7 | GND_DRAIN | GROUND FOR SIGNAL RETURN |
| 8 | StdA_SSTX- | SUPERSPEED TRANSMITTER DIFFERENTIAL PAIR |
| 9 | StdA_SSTX+ | |
| SHELL | Shield | CONNECTOR METAL SHELL |



- NOTES:**
- MATERIAL**
 - ALL MATERIALS ARE RoHS COMPLIANT PER EU DIRECTIVE 2011/65/EU AND AMENDMENTS
 - SHELL: NICKEL PLATED COPPER ALLOY
 - HOUSING: HIGH TEMPERATURE THERMOPLASTIC, UL94V-0, COLOUR - BLUE
 - CONTACTS: PHOSPHOR BRONZE WITH 0.76 µm [30 µ"] GOLD OVER NICKEL ON MATING AREA & MATTE TIN ON SOLDER TAILS
 - LOCKING TAB: STAINLESS STEEL
 - LATCH FEATURE PROVIDES A POSITIVE LOCK TO ANY STANDARD USB 2.0 OR 3.0 TYPE 'A' PLUG.
 - LOCKING RETENTION FORCE: 50 N (11.2 Lbf) MINIMUM
 - OPERATING TEMPERATURE: -40C TO +105C.
 - CURRENT RATING: 1.8A FOR POSITIONS 1 AND 4, 0.25A FOR REMAINING POSITIONS.

AMPHENOL CANADA P/N: LUSB-3193-00

| | | | |
|----------------------------|------------------------|-----------|---------|
| UNLESS SPECIFIED OTHERWISE | DRAWN | B.COPPING | MAY4/12 |
| PRIMARY UNITS MILLIMETERS | CHECKED | K.LAMBIE | MAY4/12 |
| SECONDARY INCHES | M.E. APP'D | | |
| REFERENCE IN PARENTHESES | Q.A. APP'D | | |
| GENERAL TOLERANCES | DWG APPR. | | |
| 1 DECIMAL PLACE ±0.40 | ENG. REL. NO. | EAR 14026 | |
| 2 DECIMAL PLACES ±0.25 | REF. | | |
| 3 DECIMAL PLACES | THIRD ANGLE PROJECTION | | |
| ANGULAR DEGREES | DO NOT SCALE DRAWING | | |

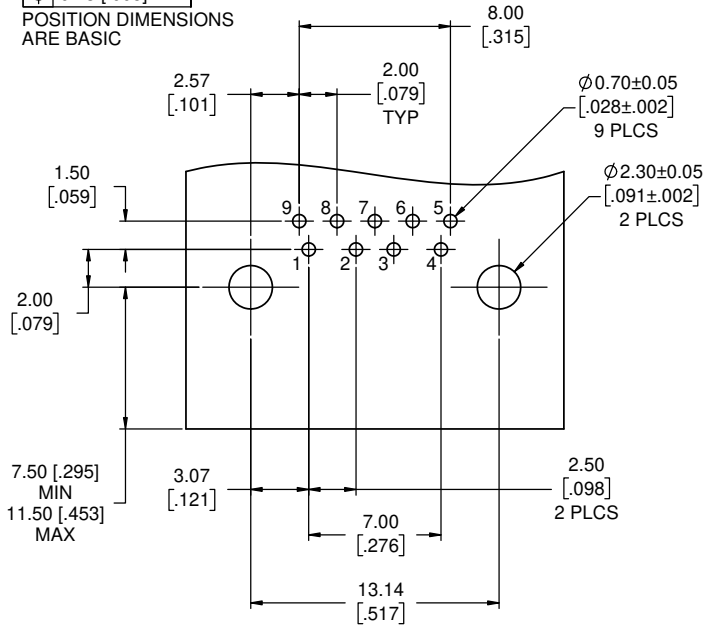
Amphenol Canada Corp.
www.amphenolcanada.com
LUSB SERIES USB 3.0 TYPE A RECEPTACLE WITH POSITIVE LOCKING LATCH, RIGHT ANGLE PCB TAIL, RoHS COMPLIANT

DWG. NO. **P-LUSB-3193-00** REV **C**

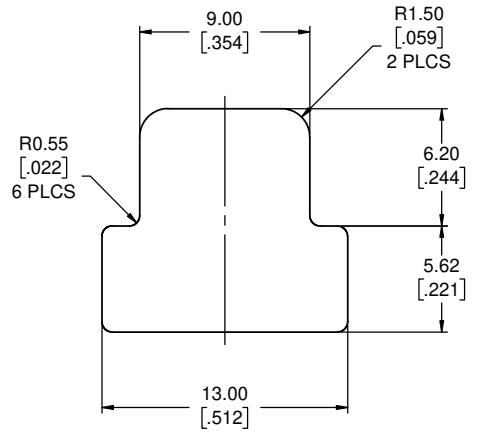
CODE ID NO. 03554 DWG SIZE: X SCALE: 5:1 SHEET 1 OF 2

| REVISIONS | | | |
|-----------|-----------------------------|----------|-------|
| REV | DESCRIPTION, ECN, EAR NO. | DATE | APP'D |
| B | PRODUCT DRAWING (EAR 14331) | JAN21/15 | K.L. |
| C | PRODUCT DRAWING (EAR 14417) | NOV24/16 | K.L. |

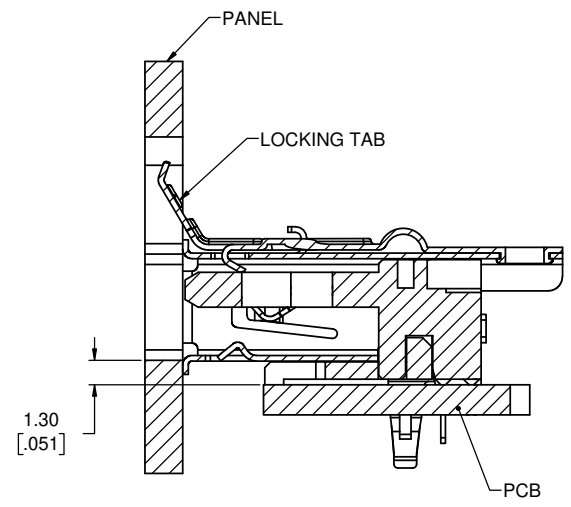
LOCATE HOLES
 $\varnothing 0.13 [0.005]$ DIA
 POSITION DIMENSIONS
 ARE BASIC



RECOMMENDED PCB LAYOUT
 COMPONENT SIDE OF BOARD



RECOMMENDED PANEL CUT-OUT



SECTION THROUGH PANEL CUT-OUT



| | | | |
|-----------------------------|------------------------|-----------|---------|
| UNLESS SPECIFIED OTHERWISE | DRAWN | B.COPPING | MAY4/12 |
| PRIMARY UNITS MILLIMETERS | CHECKED | K.LAMBIE | MAY4/12 |
| SECONDARY UNITS INCHES | M.E. APP'D | | |
| REFERENCE IN PARENTHESES | Q.A. APP'D | | |
| GENERAL TOLERANCES | DWG APPR. | | |
| 1 DECIMAL PLACE ± 0.40 | ENG. REL. NO. | EAR 14026 | |
| 2 DECIMAL PLACES ± 0.25 | REF. | | |
| 3 DECIMAL PLACES | THIRD ANGLE PROJECTION | | |
| ANGULAR DEGREES | DO NOT SCALE DRAWING | | |

Amphenol Canada Corp.
www.amphenolcanada.com
LUSB SERIES USB 3.0 TYPE A RECEPTACLE WITH POSITIVE LOCKING LATCH, RIGHT ANGLE PCB TAIL, RoHS COMPLIANT

DWG. NO. **P-LUSB-3193-00** REV **C**

CODE ID NO. 03554 DWG SIZE: X SCALE: 5:1 SHEET 2 OF 2

THIS DOCUMENT CONTAINS PROPRIETARY INFORMATION AND SUCH INFORMATION MAY NOT BE DISCLOSED TO OTHERS FOR ANY PURPOSE OR USED FOR MANUFACTURING PURPOSES WITHOUT WRITTEN PERMISSION FROM AMPHENOL CANADA CORP.