

MATERIALS AND FINISHES

BODY, ZINC ALLOY
PLATED TIN

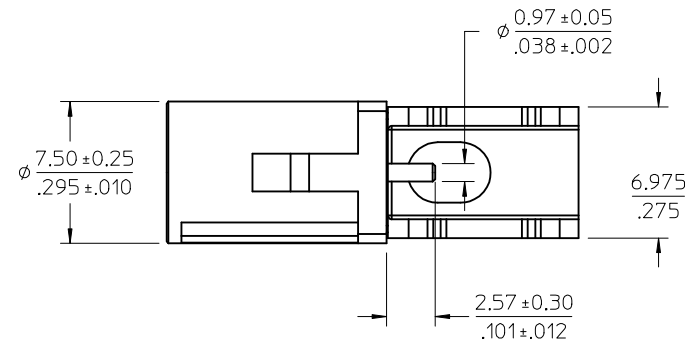
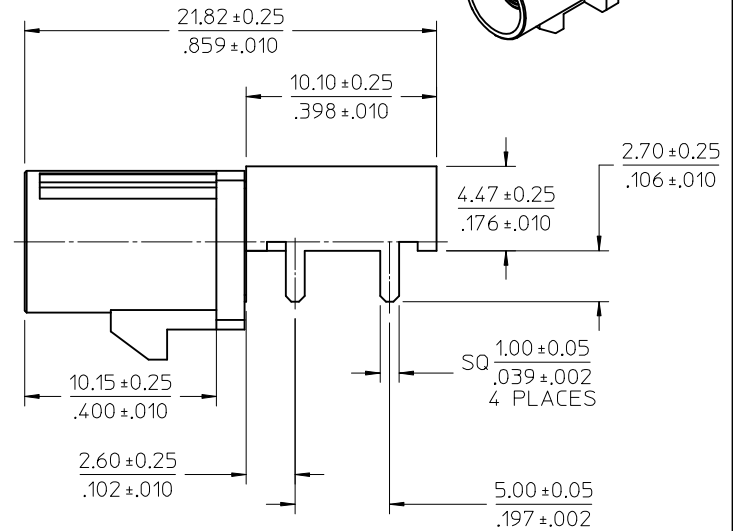
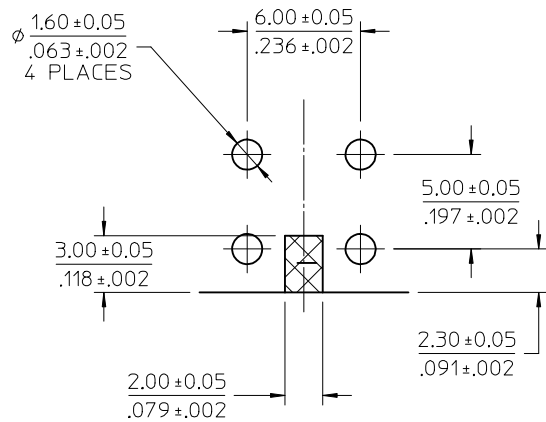
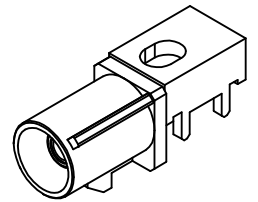
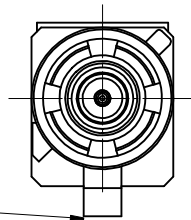
CENTER CONTACT, BRASS
PLATED GOLD

OUTER CASING, HIGH TEMPERATURE PLASTIC
KEYING SEE TABLE
COLOR SEE TABLE

INSULATOR, TEFLON

PACKAGING BY TRAY

FAKRA
CONNECTOR
KEYING
CODE I SHOWN



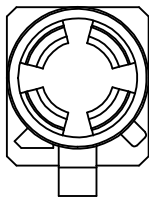
PS-89675-3310	PRODUCT SPECIFICATION
MIL-STD-348A, FIG. 311.1	INTERFACE SPECIFICATION
SPECIFICATION	DESCRIPTION

RTM PDR0912463	REV	DESCRIPTION
EC NO: URF2011-0345	A	
DRWN:ELIN		2010/11/10
CHKD:		
APPR:MHUANG		2010/12/31

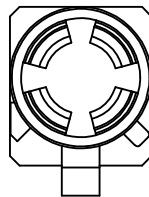
QUALITY SYMBOLS	GENERAL TOLERANCES (UNLESS SPECIFIED)
$\nabla=0$	mm INCH
$\nabla=0$	4 PLACES ± --- ± ---
	3 PLACES ± --- ± ---
	2 PLACES ± --- ± ---
	1 PLACE ± --- ± ---
	ANGULAR ± 2 °

DRAWN BY	DATE	TITLE
EVITA	2009/12/14	SMB JACK, FAKRA R/A PCB, 50 OHMS WITH DOWN LATCH SMB-J/PCB/RA
CHECKED BY	DATE	
KERRIE	2009/12/14	
APPROVED BY	DATE	
MHUANG	2010/12/31	

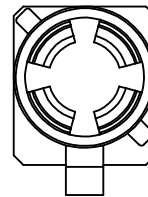
DIMENSION STYLE	SCALE	DESIGN UNITS	THIRD ANGLE PROJECTION
MM/IN		METRIC	
MATERIAL NO.	DOCUMENT NO.	SHEET NO.	
SEE TABLE	SD-73403-554	1 OF 3	
THIS DRAWING CONTAINS INFORMATION THAT IS PROPRIETARY TO MOLEX INCORPORATED AND SHOULD NOT BE USED WITHOUT WRITTEN PERMISSION			



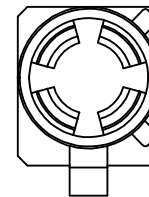
CODE-A



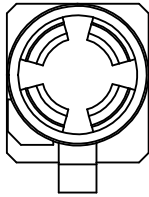
CODE-B



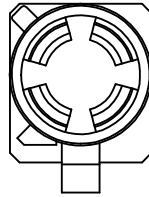
CODE-C



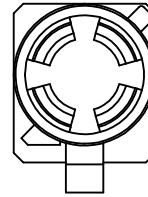
CODE-D



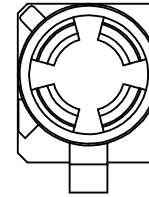
CODE-E



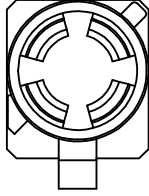
CODE-F



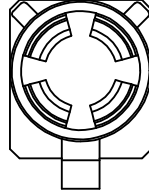
CODE-G



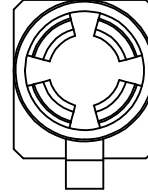
CODE-H



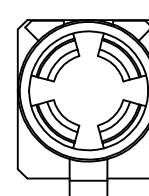
CODE-I



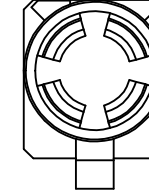
CODE-K



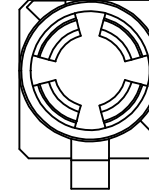
CODE-Z



CODE-L



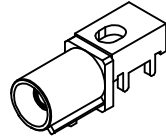
CODE-M



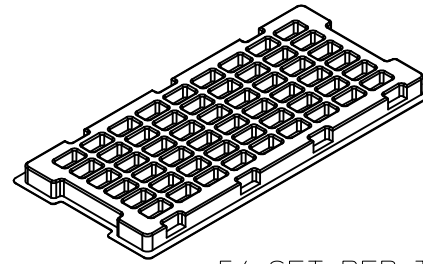
CODE-N

N	PASTEL GREEN	73403-5553
M	PASTEL ORANGE	73403-5552
L	CARMINE RED	73403-5551
Z	WATER BLUE	73403-5550
K	CURRY YELLOW	73403-5549
I	BEIGE	73403-5548
H	VIOLET	73403-5547
G	GRAY	73403-5546
F	BROWN	73403-5545
E	GREEN	73403-5544
D	BORDEAUXVIOLET	73403-5543
C	BLUE	73403-5542
B	NATURAL	73403-5541
A	BLACK	73403-5540
KEYING CODE	COLOR	PART NO.

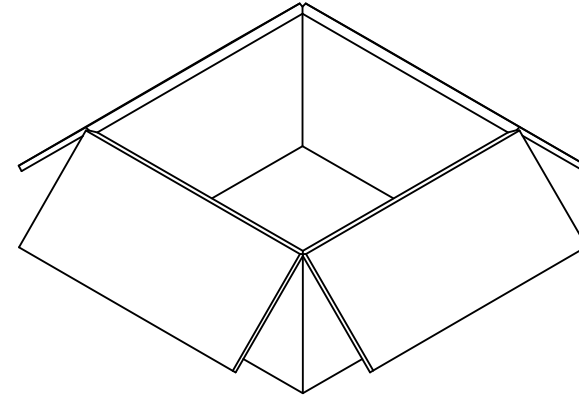
SEE SHEET 1 EC NO: URF2011-0345 DRAWN IN: 2010/11/10 CHKD: DRWNLIN APPR: MHUANG 2010/12/31	QUALITY SYMBOLS ▽=0 ▽=0	GENERAL TOLERANCES (UNLESS SPECIFIED) <table border="1"> <tr> <th></th> <th>mm</th> <th>INCH</th> </tr> <tr> <td>4 PLACES</td> <td>± ---</td> <td>± ---</td> </tr> <tr> <td>3 PLACES</td> <td>± ---</td> <td>± ---</td> </tr> <tr> <td>2 PLACES</td> <td>± ---</td> <td>± ---</td> </tr> <tr> <td>1 PLACE</td> <td>± ---</td> <td>± ---</td> </tr> </table>		mm	INCH	4 PLACES	± ---	± ---	3 PLACES	± ---	± ---	2 PLACES	± ---	± ---	1 PLACE	± ---	± ---	DIMENSION STYLE MM/IN	SCALE DESIGN UNITS METRIC	THIRD ANGLE PROJECTION
		mm	INCH																	
	4 PLACES	± ---	± ---																	
	3 PLACES	± ---	± ---																	
2 PLACES	± ---	± ---																		
1 PLACE	± ---	± ---																		
DRAFT WHERE APPLICABLE MUST REMAIN WITHIN DIMENSIONS	MATERIAL NO. SEE TABLE	DRAWN BY EVITA	DATE 2009/12/14	TITLE SMB JACK, FAKRA R/A PCB, 50 OHMS WITH DOWN LATCH SMB-J/PCB/RA	SHEET NO. 2 OF 3															
APPROVED BY MHUANG	DATE 2010/12/31	CHECKED BY KERRIE	DATE 2009/12/14	MOLEX INCORPORATED	DOCUMENT NO. SD-73403-554															
REV A	DESCRIPTION DESCRIPTION	ANGULAR ± 2 °	SIZE C	THIS DRAWING CONTAINS INFORMATION THAT IS PROPRIETARY TO MOLEX INCORPORATED AND SHOULD NOT BE USED WITHOUT WRITTEN PERMISSION	SHEET NO. 2 OF 3															



P/N 73403-554X



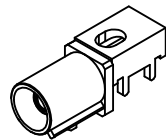
54 SET PER TRAY
 TRAY P/N 89707-0220
 360*165*18.6



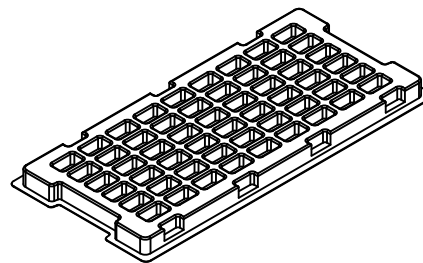
1080 SET PER OUTER
 CARTON BOX
 P/N 96708-0005
 383*386*196

540 SET PER INNER
 CARTON BOX
 P/N 96707-0001
 363*176*176

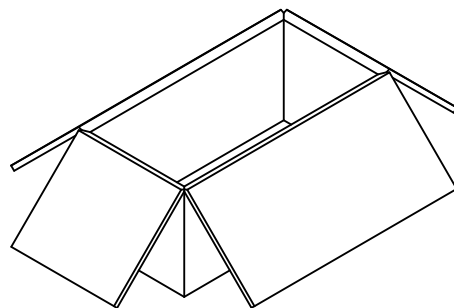
SEE SHEET 1 EC NO: URF2011-0345 DRW: DRWINELIN 2010/11/10 CHKD: APPR: MHUANG 2010/12/31 REV: A	QUALITY SYMBOLS	GENERAL TOLERANCES (UNLESS SPECIFIED)	DIMENSION STYLE	SCALE	DESIGN UNITS	THIRD ANGLE PROJECTION															
	▽=0 ▽=0	<table border="1"> <tr> <th></th> <th>mm</th> <th>INCH</th> </tr> <tr> <td>4 PLACES</td> <td>± 0.15</td> <td>± 0.006</td> </tr> <tr> <td>3 PLACES</td> <td>± 0.20</td> <td>± 0.008</td> </tr> <tr> <td>2 PLACES</td> <td>± 0.25</td> <td>± 0.010</td> </tr> <tr> <td>1 PLACE</td> <td>± 0.30</td> <td>± 0.012</td> </tr> </table>		mm	INCH	4 PLACES	± 0.15	± 0.006	3 PLACES	± 0.20	± 0.008	2 PLACES	± 0.25	± 0.010	1 PLACE	± 0.30	± 0.012	MM/IN DRAWN BY: EVITA DATE: 2009/12/14 CHECKED BY: KERRIE DATE: 2009/12/14 APPROVED BY: MHUANG DATE: 2010/12/31	METRIC	METRIC	TITLE: SMB JACK, FAKRA R/A PCB, 50 OHMS WITH DOWN LATCH SMB-J/PCB/RA MOLEX INCORPORATED DOCUMENT NO. SD-73403-554 SHEET NO. 3 OF 3
		mm	INCH																		
	4 PLACES	± 0.15	± 0.006																		
3 PLACES	± 0.20	± 0.008																			
2 PLACES	± 0.25	± 0.010																			
1 PLACE	± 0.30	± 0.012																			
DRAFT WHERE APPLICABLE MUST REMAIN WITHIN DIMENSIONS	ANGULAR ± 2 °	MATERIAL NO. -----	THIS DRAWING CONTAINS INFORMATION THAT IS PROPRIETARY TO MOLEX INCORPORATED AND SHOULD NOT BE USED WITHOUT WRITTEN PERMISSION																		



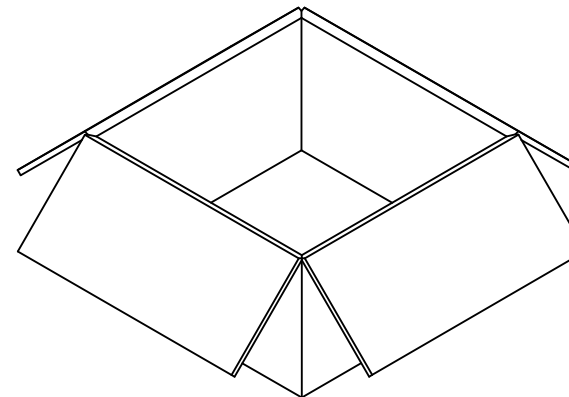
P/N 73403-554X



54 SET PER TRAY
TRAY P/N 89707-0220
360*165*18.6



540 SET PER INNER
CARTON BOX
P/N 96707-0001
363*176*176



1080 SET PER OUTER
CARTON BOX
P/N 96708-0005
383*386*196

ADDED PACKAGE DIM. EC NO: URF2011-0345 2010/11/12 DRAWN BY ELIN	CHKD: DRWINELIN	APPR:MHUANG	DESCRIPTION 2010/12/31	QUALITY SYMBOLS ▽=0 ▽=0	GENERAL TOLERANCES (UNLESS SPECIFIED)		DIMENSION STYLE MM/IN		SCALE	DESIGN UNITS METRIC	THIRD ANGLE PROJECTION
					mm	INCH	DRAWN BY ELIN	DATE 2010/02/04	TITLE PACKAGING FOR 73403-554*		
					4 PLACES ±	±	CHECKED BY KERRIE	DATE 2010/02/04			
					3 PLACES ±	±	APPROVED BY MHUANG	DATE 2010/12/31			
					2 PLACES ±	±	MATERIAL NO. -----		MOLEX INCORPORATED		
					1 PLACE ±	±	DOCUMENT NO. SD-73403-554-PKG		SHEET NO. 1 OF 1		
ANGULAR ± 2 °					DRAFT WHERE APPLICABLE MUST REMAIN WITHIN DIMENSIONS			THIS DRAWING CONTAINS INFORMATION THAT IS PROPRIETARY TO MOLEX INCORPORATED AND SHOULD NOT BE USED WITHOUT WRITTEN PERMISSION			