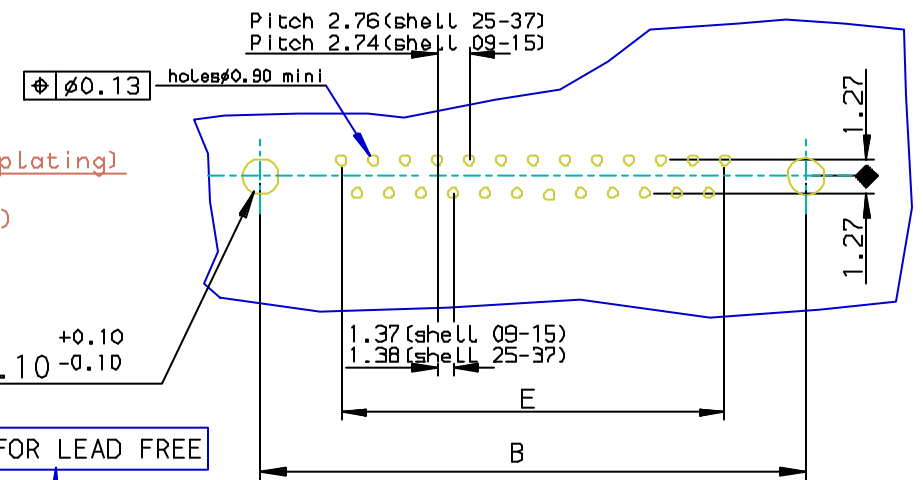


PC card drilling dimensions (after plating)
(thickness 2.40 ±0.20mm)



LF FOR LEAD FREE

REQUIREMENTS

Technical characteristics:

Shell: steel tin/Zinc Cr3 plated
 Insulators: self-extinguishing thermoplastic, ULclass 94V0
 Contacts size 20: brass, gold on mating end, bright tin on termination end over nickel on entire contact
 Cycles: 500 mini for plating 6
 : 200 mini for plating 4

Screwlock: brass, tin/Zinc Cr3 plated

Metal plate for electrical continuity: brass, tin/Zinc Cr3 plated

Electrical characteristics:

max. current rating: 5A
 Test voltage: 1000V
 Rated voltage: 300V
 Contact resistance: <15mΩ
 Shell resistance: <5mΩ
 Insulation resistance: >5000MΩ

Climatic characteristics:

Operating temperature range: -55°C +125°C

Dimensions:

in accordance with MIL-C-24308

Part Number & Date Code Printing

SHELL	A±0.38	B±0.12	C±0.10	D±0.25	G±0.25	PART NUMBER
09	30.81	24.99	16.96	16.79	5.90	D09P13B*UX00**
15	39.14	33.32	25.18	25.12	5.90	D15P13B*UX00**
25	53.03	47.04	39.12	38.84	5.70	D25P13B*UX00**
37	69.32	63.50	55.68	55.30	5.70	D37P13B*UX00**

Plating: 4 --> Flash AU
 Plating: 6 --> 0.76µ AU

FOR ROHS DETAILS REFER DWG.NO: C01-8646-0000
 European Views



Copyright FCI.

rev	ecn no	dr	date
D	105-0124	JS	2005/07/27
E	106-0074	SK	2006/06/08
-	-	-	-
-	-	-	-
-	-	-	-
-	-	-	-

www.fciconnect.com		surface ISO 1302 ✓	tolerance std ISO 406 ISO 1101	projection mm
TOLERANCES UNLESS OTHERWISE SPECIFIED				
Dr	JOHN SLEEBA	1994/06/30	ANGULAR	0.X ±0.1
Eng	GEORGE VJ	1994/06/30	LINEAR	0.XX ±0.1
Chr	GEORGE VJ	2005/07/27	0.XX' ±2'	0.XXX ±0.1
Appr	KVSD	2005/07/27	Product family	D-SUB
FCI		title WITH SCREWLOCK & METAL PLATE. WITH SCREWLOCK & METAL PLATE.		Rev. E
catalog no		DELTA-D		spec no C01-8646-0261
		CUSTOMER		sheet 1 of 1

REV F - 2006-04-17