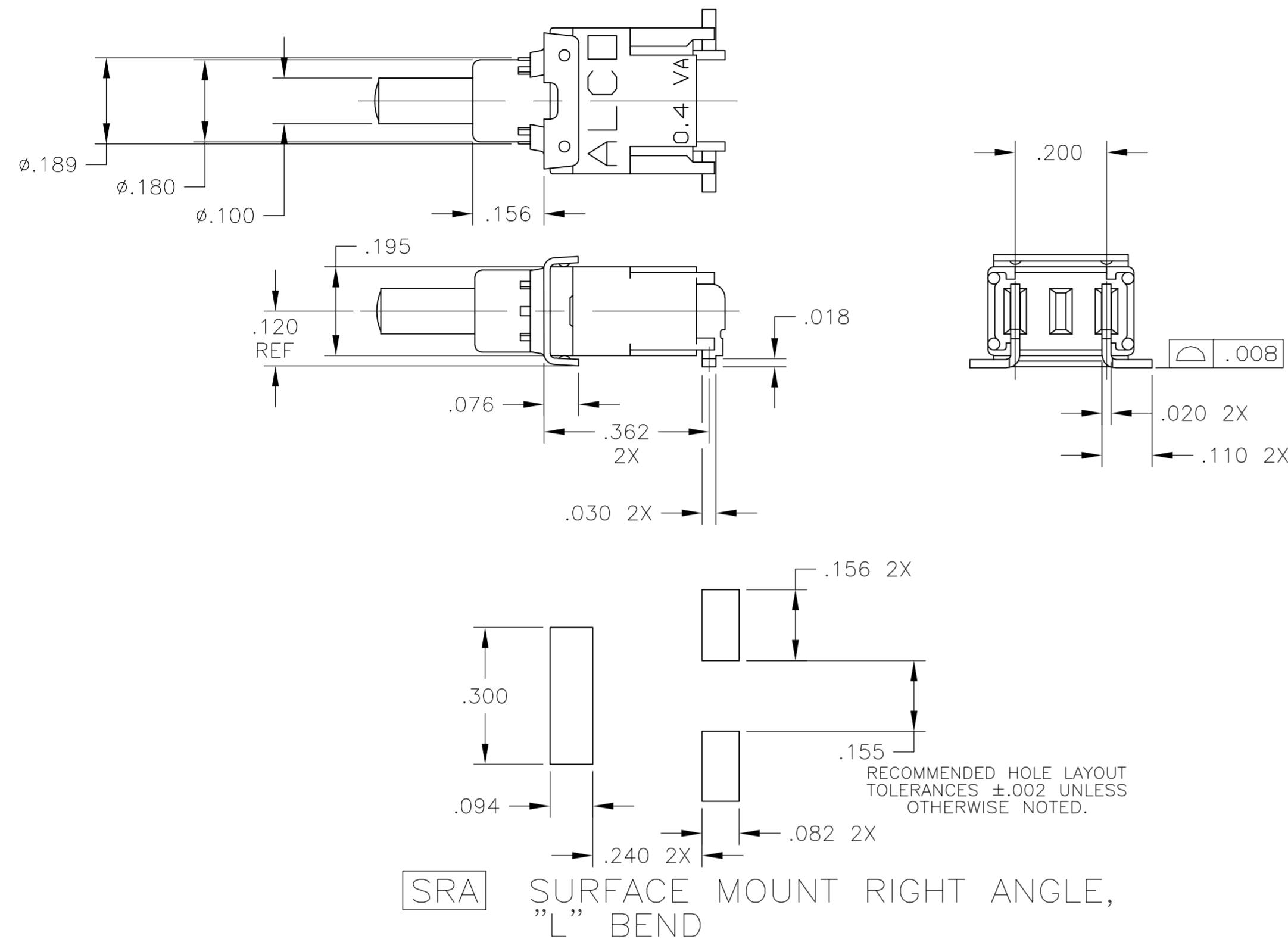


THIS DRAWING IS UNPUBLISHED. RELEASED FOR PUBLICATION  
 © COPYRIGHT BY TYCO ELECTRONICS CORPORATION. ALL RIGHTS RESERVED.

LOC		DIST		REVISIONS			
P	LTR	DESCRIPTION		DATE	DWN	APVD	
AD	00	B		REVISED PER ECO-08-012779	23MAY08	HMR	MW



**SPECIFICATIONS:**

**MATERIALS:**

CASE & BUSHING: LCP  
 BUTTON: POLYAMIDE  
 SPRING: MUSIC WIRE, ZN PLATED  
 MOVABLE CONTACT: BRASS OR COPPER ALLOY, AU OVER NI PLATED.  
 BRACKET: STEEL, TIN OVER COPPER PLATED  
 TERMINALS: BRASS, TIN OVER NICKEL IN SOLDER AREA AND GOLD OVER NI IN CONTACT AREA.  
 O-RING: NITRILE

**ELECTRICAL:**

CONTACT RATING: 0.4VA @ 20 VAC/DC  
 INITIAL CONTACT RESISTANCE: 20 MILLIOHMS MAX.  
 INSULATION RESISTANCE: 1000 MEGOHMS @ 500V DC MIN.  
 DIELECTRIC STRENGTH: 1000 VOLTS RMS AT SEA LEVEL.

LIFE EXPECTANCY: 80,000 CYCLES

**MECHANICAL:**

ACTUATION TRAVEL: .035

**ENVIRONMENTAL:**

OPERATING TEMPERATURE:  $-22^{\circ}\text{F}$  TO  $+185^{\circ}\text{F}$   
 ( $-30^{\circ}\text{C}$  TO  $+85^{\circ}\text{C}$ )  
 STORAGE TEMPERATURE:  $-67^{\circ}\text{F}$  TO  $+185^{\circ}\text{F}$   
 ( $-55^{\circ}\text{C}$  TO  $+85^{\circ}\text{C}$ )

**NOTES:**

- ALL MATERIALS AND FINISHES COMPLY WITH EU DIRECTIVE 2002/95/EC OF 27JAN2003 (ROHS)
- REFLOW SOLDER PROCESS CABLE TO  $245^{\circ}\text{C}$

FIGURE 1

FUNCTION CHART	
THE FOLLOWING FUNCTIONS AVAILABLE IN SINGLE POLE.	
2 POSITIONS OFF (ON)	
TERMINALS CONNECTED: 1-3	
OFF INDICATES A MECHANICAL POSITION WITH NO ELECTRICAL CONNECTION.	
(ON) INDICATES MOMENTARY ACTION	

TSPD11CGSRA004	1 - 3	OFF (ON)	1977298-1
MODEL NUMBER	CONNECTED TERMINALS	FUNCTION	PART NUMBER

THIS DRAWING IS A CONTROLLED DOCUMENT.		DWN M.BINNER 01MAR05	Tyco Electronics Corporation	
DIMENSIONS: INCHES		CHK M.ZITTO 01MAR05	Harrisburg, Pa 17105-3608	
TOLERANCES UNLESS OTHERWISE SPECIFIED:		APVD M.ZITTO 01MAR05	NAME	
0 PLC $\pm$ -	1 PLC $\pm$ -	PRODUCT SPEC	SEALED PUSHBUTTON SWITCH	
2 PLC $\pm$ -	3 PLC $\pm$ -	APPLICATION SPEC	SINGLE POLE, TSP SERIES, ROHS COMPLIANT	
4 PLC $\pm$ .010	ANGLES $\pm$ 1'		SIZE	CAGE CODE
MATERIAL -	FINISH -	WEIGHT -	A2	00779
CUSTOMER DRAWING			DRAWING NO	RESTRICTED TO
			C=1977298	-
			SCALE 4:1	SHEET 1 OF 1
			REV B	