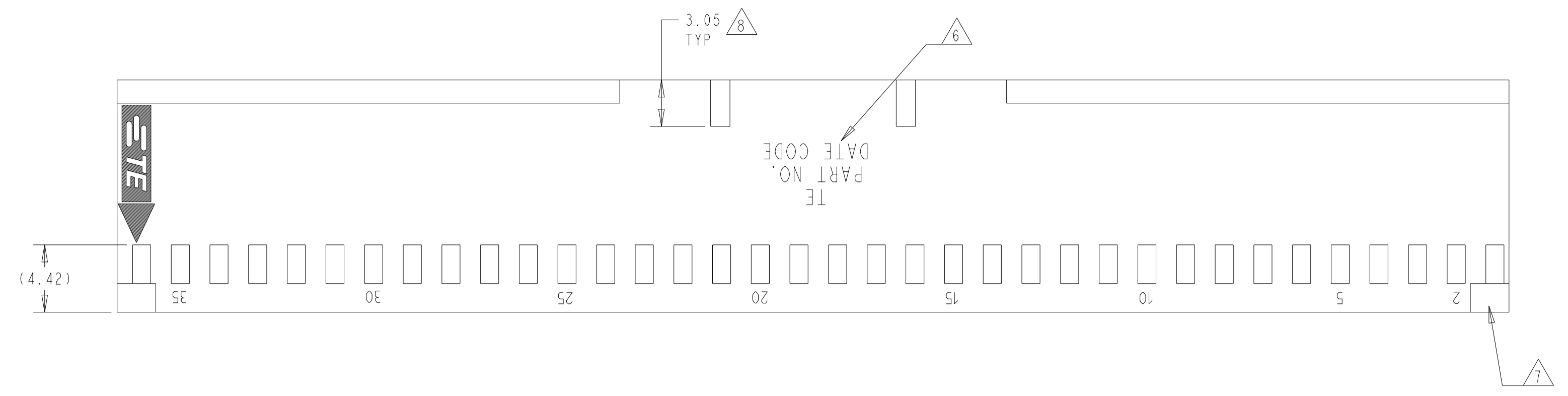
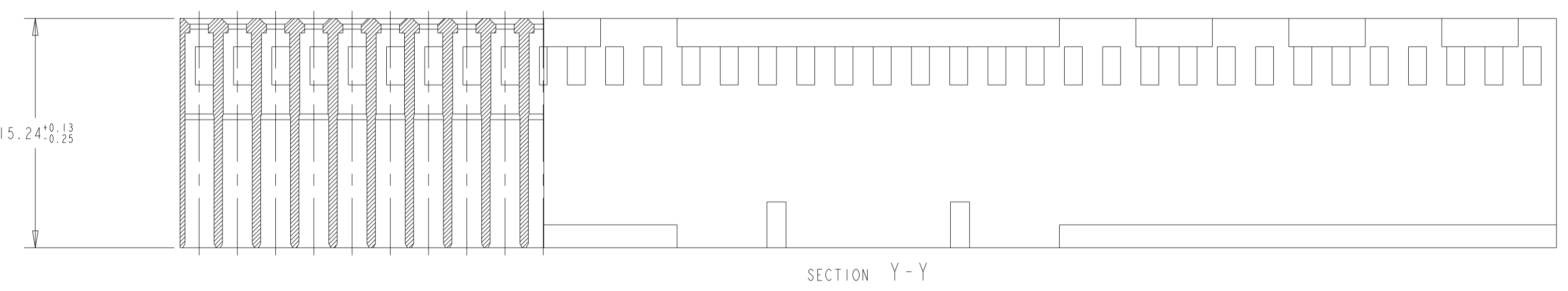
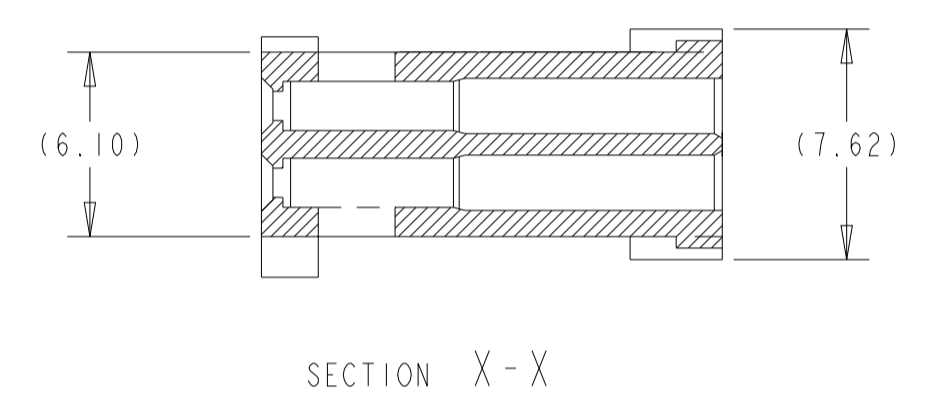
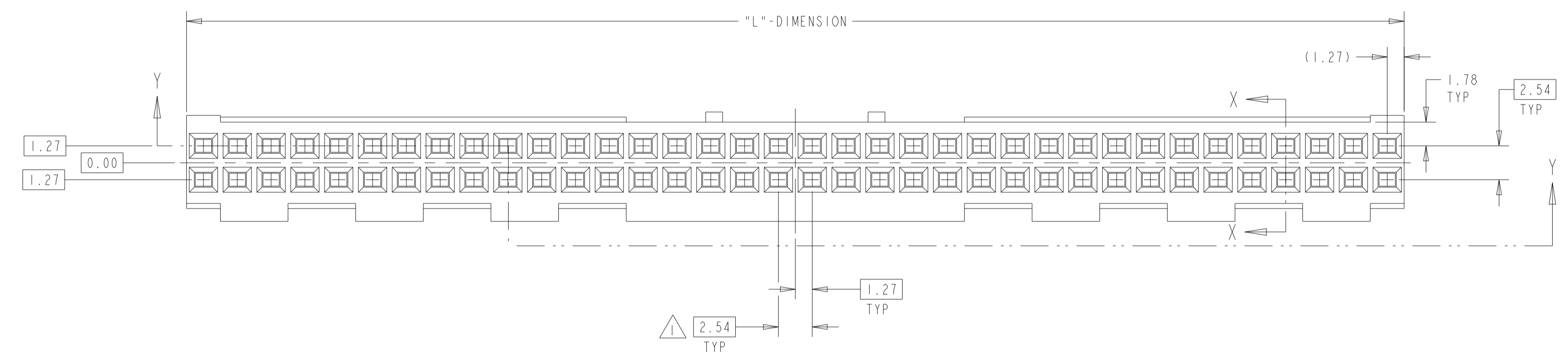


| REVISIONS | | | | | |
|-----------|-----|---------------------------|-----------|-----|------|
| P | LTN | DESCRIPTION | DATE | OWN | APVD |
| T3 | | REVISED PER ECO-11-004587 | 11MAR11 | KH | JO |
| U | | REVISED PER ECO-18-000976 | 18MAY2018 | RS | JO |
| V | | REVISED PER ECR-22-132152 | 15JUN2022 | RK | SD |



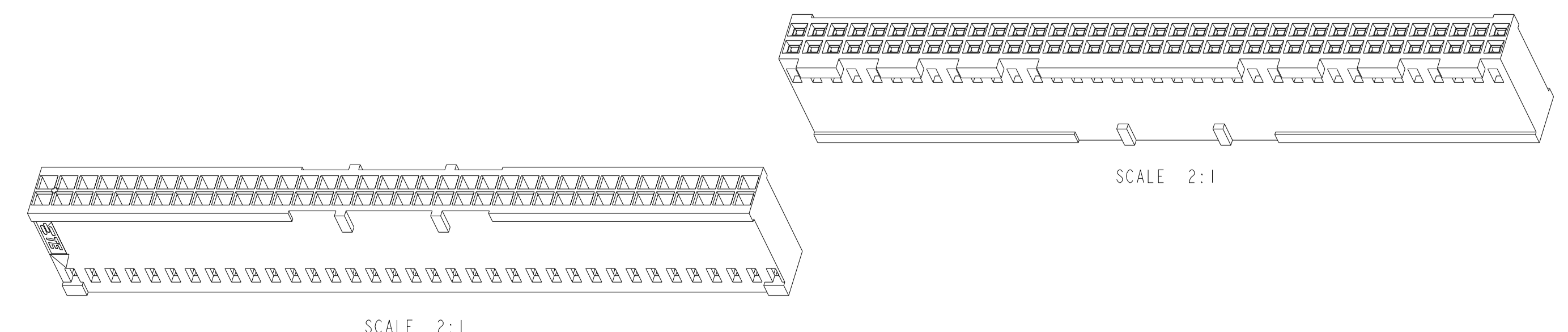
- △ CAVITY LOCATION DIMENSIONS INCREASE IN INCREMENTS OF 2.54 TOLERANCES ARE NON-CUMULATIVE.
- 2. USE EXTRACTION TOOL 91052-1 TO REMOVE RECEPTACLE CONTACTS
- 3. THESE HOUSINGS ARE COMPATIBLE WITH ANY MOD II SHROUDED HEADER
- 4. HOUSINGS WILL ACCOMODATE ALL MOD IV, IV.5, AND MOD V CONTACTS.
- △ 5 OBSOLETE PARTS: OBSOLETE CIS STREAMLINING PER D.RENAUD/D.SINISI
- △ 6 'TE' PART NUMBER AND DATE CODE MARKED WHEN HOUSING SIZE PERMITS.
- △ 7 1.17±.38 CHARS. MARKED CAVITY IDENTS, SECOND AND EVERY FIFTH CAVITY, ONE SIDE, AS SHOWN.
- △ 8 STRAIN RELIEF LOCATORS WILL APPEAR ON 20 POSITION AND LARGER HOUSINGS.
- △ 9 MATERIAL: GLASS FILLED THERMOPLASTIC, UL 94-V0 RATED, COLOR: BLACK.
- 10. THE PRODUCT IS IN PROCESS FOR UL RECOGNITION.
- 11. THE PRODUCT IS IN PROCESS FOR QUALIFICATION, AND IS NOT YET QUALIFIED

LONGEST POSITION SHOWN



| ALL | 6-87977-2 | 81.28 | 31 | 64 | 6-87977-1 |
|-----------|------------------------------|---------|------------------|---------------------|----------------------------|
| ALL | 6-87977-0 | 73.66 | 28 | 58 | 5-87977-9 |
| ALL | 5-87977-8 | 71.12 | 27 | 56 | 5-87977-7 |
| ALL | 5-87977-6 | 60.96 | 23 | 48 | 5-87977-5 |
| ALL | 5-87977-4 | 91.44 | 35 | 72 | 2-87977-7 |
| ALL | 5-87977-3 | 88.9 | 34 | 70 | 2-87977-6 |
| ALL | 5-87977-2 | 83.82 | 32 | 66 | 2-87977-5 |
| ALL | 5-87977-1 | 76.2 | 29 | 60 | 2-87977-4 |
| ALL | 5-87977-0 | 68.58 | 26 | 54 | 2-87977-3 |
| ALL | 4-87977-9 | 66.04 | 25 | 52 | 2-87977-2 |
| ALL | 4-87977-8 | 63.5 | 24 | 50 | 2-87977-1 |
| ALL | 4-87977-7 | 55.88 | 21 | 44 | 2-87977-0 |
| ALL | 4-87977-6 | 53.34 | 20 | 42 | 1-87977-9 |
| ALL | 4-87977-5 | 50.8 | 19 | 40 | 1-87977-8 |
| ALL | 4-87977-4 | 48.26 | 18 | 38 | 1-87977-7 |
| ALL | 4-87977-3 | 45.72 | 17 | 36 | 1-87977-6 |
| ALL | 4-87977-2 | 43.18 | 16 | 34 | 1-87977-5 |
| ALL | 4-87977-1 | 40.64 | 15 | 32 | 1-87977-4 |
| ALL | 4-87977-0 | 38.1 | 14 | 30 | 1-87977-3 |
| ALL | 3-87977-9 | 35.56 | 13 | 28 | 1-87977-2 |
| ALL | 3-87977-8 | 33.02 | 12 | 26 | 1-87977-1 |
| ALL | 3-87977-7 | 30.48 | 11 | 24 | 1-87977-0 |
| ALL | 3-87977-6 | 27.94 | 10 | 22 | 87977-9 |
| ALL | 3-87977-5 | 25.4 | 9 | 20 | 87977-8 |
| ALL | 3-87977-4 | 22.86 | 8 | 18 | 87977-7 |
| ALL | 3-87977-3 | 20.32 | 7 | 16 | 87977-6 |
| ALL | 3-87977-2 | 17.78 | 6 | 14 | 87977-5 |
| ALL | 3-87977-1 | 15.24 | 5 | 12 | 87977-4 |
| NO PART # | 3-87977-0 | 12.7 | 4 | 10 | 87977-3 |
| NO PART # | 2-87977-9 | 10.16 | 3 | 8 | 87977-2 |
| NOTE# 6 | 2-87977-8 | 7.62 | 2 | 6 | 87977-1 |
| MARKING | UNMARKED HOUSING PART NUMBER | "L" DIM | NUMBER OF SPACES | NUMBER OF POSITIONS | MARKED HOUSING PART NUMBER |

ISOMETRIC VIEW



THIS DRAWING IS A CONTROLLED DOCUMENT.

OWN: BOB BOLES BG 18DEC89
 CHG: P. SREMCICH 05OCT93
 APVD: P. SREMCICH 05OCT93

DIMENSIONS: mm
 TOLERANCES UNLESS OTHERWISE SPECIFIED:
 0 PLC ±
 1 PLC ±0.5
 2 PLC ±0.5
 3 PLC ±0.13
 4 PLC ±
 ANGLES ±
 FINISH ±0° 30'

MATERIAL: 9

TE Connectivity
STE
 MOD IV CRIMP SNAP-IN CONNECTOR, DOUBLE ROW, 2.54 CENTERS

SIZE: A | CAGE CODE: 00779 | DRAWING NO: 87977 | RESTRICTED TO: -
 WEIGHT: -
 CUSTOMER DRAWING | SCALE: 4:1 | SHEET: 1 OF 1 | REV: V