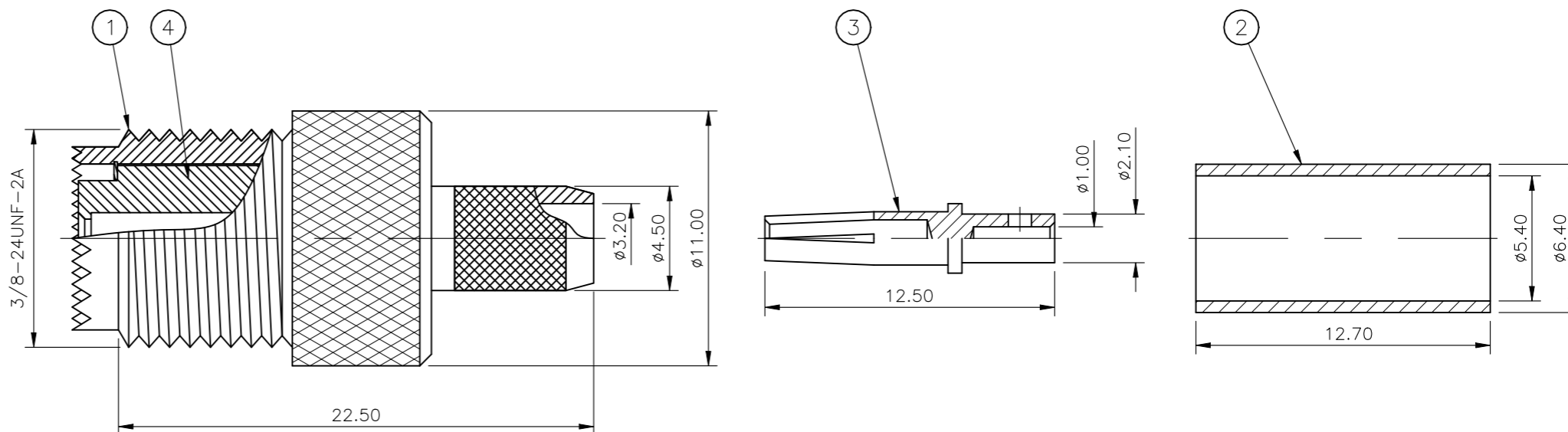


REVISIONS

P	LTR	DESCRIPTION	DATE	DWN	APVD
	C1	REVISED PER ECN-22-146347	05APR2022	RZ	WK

NOTES

- 1 SINGLE PACK IN ACCORDANCE WITH AMP SPEC 107-3275
- 2 100 PER BOX ACCORDANCE WITH AMP SPEC 107-3275
- 3 NICKEL PLATING
- 4 GOLD PLATING
- 5. FOR TECHNICAL DATA REFER TO YOUR LOCAL TYCO ELECTRONICS SALES OFFICE
- 6. ALL DIMENSIONS ARE NOMINAL FOR REFERENCE ONLY UNLESS OTHERWISE STATED



QTY	PLC	DESCRIPTION	MATERIAL	ITEM
1	1	INSULATOR	POM	4
1	1	CONTACT	BRASS	3
1	1	FERRULE	ZINC ALLOY	2
1	1	BODY	BRASS	1
5	5	MATERIAL		0

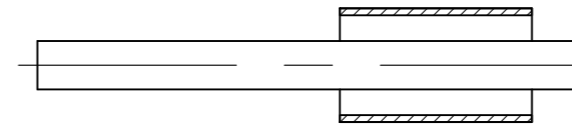
THIS DRAWING IS A CONTROLLED DOCUMENT.		DWN ANSON MA 14FEB09	STE TE Connectivity Ltd.	
DIMENSIONS: mm		CHK RITA ZUO 14FEB09		
TOLERANCES UNLESS OTHERWISE SPECIFIED:		APVD BOB ZHAO 14FEB09	NAME	
0 PLC ± -		M-UHF STR JK HEX		
1 PLC ± 0.3		RG58C/U, 141A/U, URM43, 76		
2 PLC ± 0.2		-		
3 PLC ± -		SIZE CAGE CODE DRAWING NO RESTRICTED TO		
4 PLC ± -		A3 00779 C-1814819		
ANGLES ± -		CUSTOMER DRAWING SCALE NTS SHEET 1 OF 2 REV C1		
MATERIAL SEE TABLE		FINISH SEE TABLE		

P	LTR	DESCRIPTION	DATE	DWN	APVD
-	-	SEE SHEET 1	-	-	-

ASSEMBLY INSTRUCTION
RG58C/U, 141A/U, URM43, 76, KX15

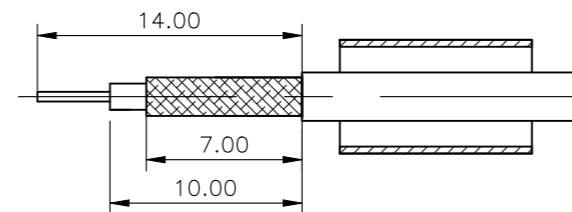
STEP 1

1. SLIDE METAL CRIMP FERRULE OVER CABLE



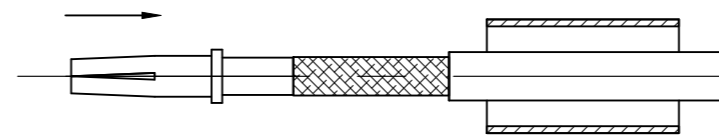
STEP 2

1. STRIP CABLE TO DIMENSIONS AS SHOWN

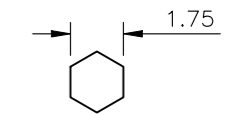


STEP 3

1. FIT CONTACT OVER CENTRE CONDUCTOR TO BUTT AGAINST DIELECTRIC.
2. CRIMP USING TOOL AS NOTES ON PAGE 1.

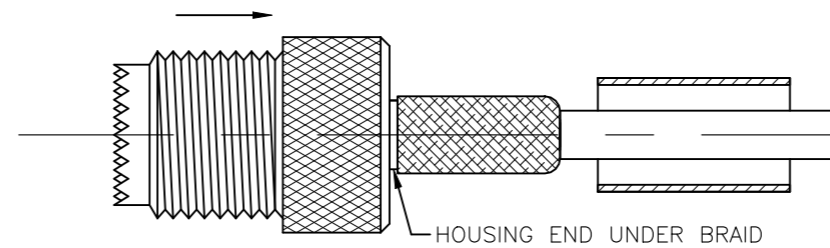


RECOMMENDED CENTRE CONTACT
A/F HEX



STEP 4

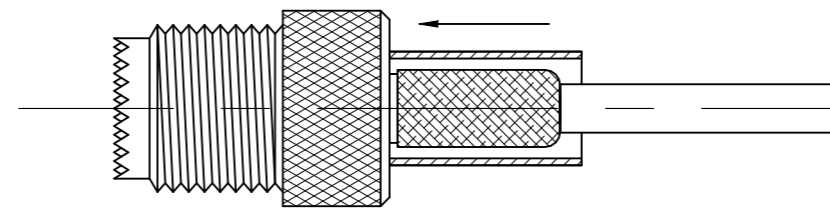
1. PRESS SUB-ASSEMBLY INTO BODY, UNTIL CONTACT IS FULLY LOCATED BY AN AUDIBLE CLICK.
2. ENSURE THAT KNURLED HOUSING INSERTS BETWEEN THE DIELECTRIC AND CABLE BRAID.



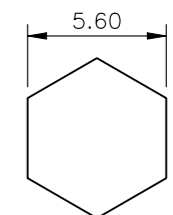
HOUSING END UNDER BRAID

STEP 5

1. SLIDE CRIMP FERRULE ALONG THE CABLE UNTIL IT BUTTS AGAINST THE HOUSING BODY.
2. CRIMP USING TOOL AS NOTED ON PAGE 1.
3. CRIMP DIMENSION AS SHOWN.

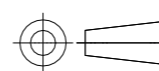


RECOMMENDED CRIMP SLEEVE
A/F HEX



THIS DRAWING IS A CONTROLLED DOCUMENT.

DIMENSIONS:
mm



TOLERANCES UNLESS OTHERWISE SPECIFIED:

0 PLC	± -
1 PLC	± -
2 PLC	± -
3 PLC	± -
4 PLC	± -
ANGLES	± -
FINISH	± -

MATERIAL
SEE TABLE

FINISH
SEE TABLE

DWN ANSON 14FEB09

CHK RITA ZUO 14FEB09

APVD BOB ZHAO 14FEB09

PRODUCT SPEC

108-112000

APPLICATION SPEC

SHEET 2

WEIGHT -

CUSTOMER DRAWING



NAME
M-UHF STR JK HEX
RG58C/U, 141A/U, URM43, 76, KX15

SIZE	CAGE CODE	DRAWING NO	RESTRICTED TO
A3	00779	C-1814819	-

SCALE	SHEET	REV
NTS	2 OF 2	C1