



SAW Components

Data Sheet N 3958 M

Data Sheet

A large, stylized, 3D-rendered version of the EPCOS logo, featuring the word "EPCOS" in a bold, sans-serif font, set against a dark, textured background with a glowing effect.



SAW Components

N 3958 M

IF Filter for Video Applications

58,75 MHz

Data Sheet

Standard

- M

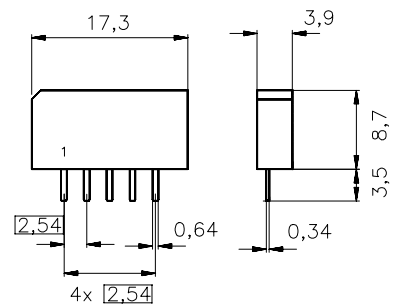
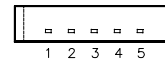
Plastic package **SIP5K**

Features

- TV IF filter with Nyquist slope and sound suppression
- Constant group delay

Terminals

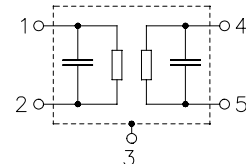
- Tinned CuFe alloy



Dimensions in mm, approx. weight 1,0 g

Pin configuration

- 1 Input
- 2 Input - ground
- 3 Chip carrier - ground
- 4 Output
- 5 Output



Type	Ordering code	Marking and package according to	Packing according to
N 3958 M	B39588-N3958-M100	C61157-A1-A15	F61074-V8067-Z000

Maximum ratings

Operable temperature range	T_A	-25/+65	°C	
Storage temperature range	T_{stg}	-40/+85	°C	
DC voltage	V_{DC}	12	V	between any terminals
AC voltage	V_{pp}	10	V	between any terminals


SAW Components
N 3958 M
IF Filter for Video Applications
58,75 MHz
Data Sheet
Characteristics

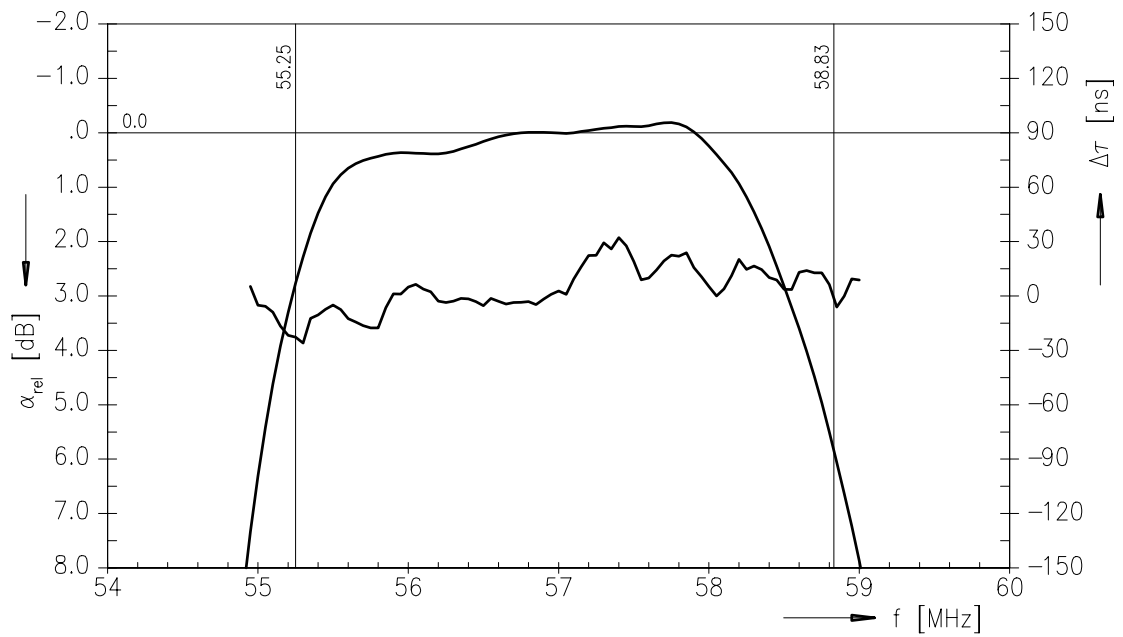
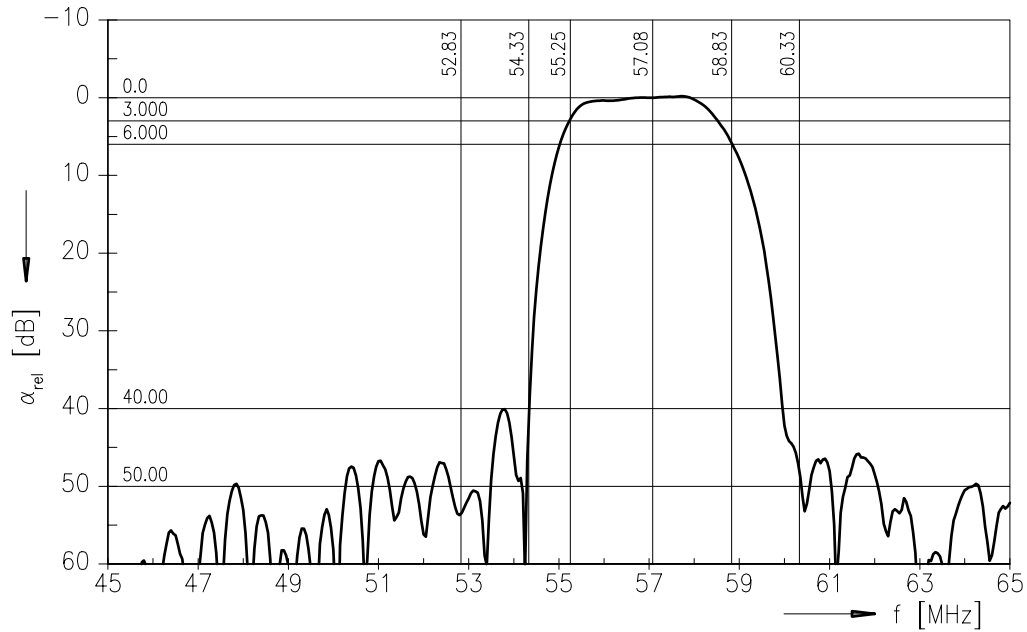
Reference temperature: $T_A = 25 (45) \text{ }^\circ\text{C}$
 Terminating source impedance: $Z_S = 50 \text{ } \Omega$
 Terminating load impedance: $Z_L = 2 \text{ k}\Omega \parallel 3 \text{ pF}$

		min.	typ.	max.	
Insertion attenuation	α				
Reference level for the following data	57,08 (57,00) MHz	11,3	12,8	14,3	dB
Relative attenuation	α_{rel}				
Picture carrier	58,83 (58,75) MHz	4,8	5,8	6,8	dB
Color carrier	55,25 (55,17) MHz	1,8	2,8	3,8	dB
Sound carrier	54,33 (54,25) MHz	30,0	40,0	—	dB
Adjacent picture carrier	52,83 (52,75) MHz	44,0	54,0	—	dB
Adjacent sound carrier	60,33 (60,25) MHz	40,0	48,0	—	dB
Lower sidelobe					
	45,08 ... 52,83 (45,00 ... 52,75) MHz	40,0	46,0	—	dB
Upper sidelobe					
	60,33 ... 65,08 (60,25 ... 65,00) MHz	36,0	42,0	—	dB
Reflected wave signal suppression					
1,1 μs ... 6,0 μs after main pulse (test pulse 250 ns, carrier frequency 57,08 (57,00) MHz)		42,0	48,0	—	dB
Feedthrough signal suppression					
1,2 μs ... 1,1 μs before main pulse (test pulse 250 ns, carrier frequency 57,08 (57,00) MHz)		50,0	56,0	—	dB
Group delay ripple (p-p)	$\Delta\tau$	—	60	—	ns
Impedance at 57,08 (57,00) MHz					
Input: $Z_{IN} = R_{IN} \parallel C_{IN}$		—	1,2 \parallel 8,9	—	k Ω \parallel pF
Output: $Z_{OUT} = R_{OUT} \parallel C_{OUT}$		—	0,8 \parallel 2,7	—	k Ω \parallel pF
Temperature coefficient of frequency	TC_f	—	-72	—	ppm/K



Data Sheet

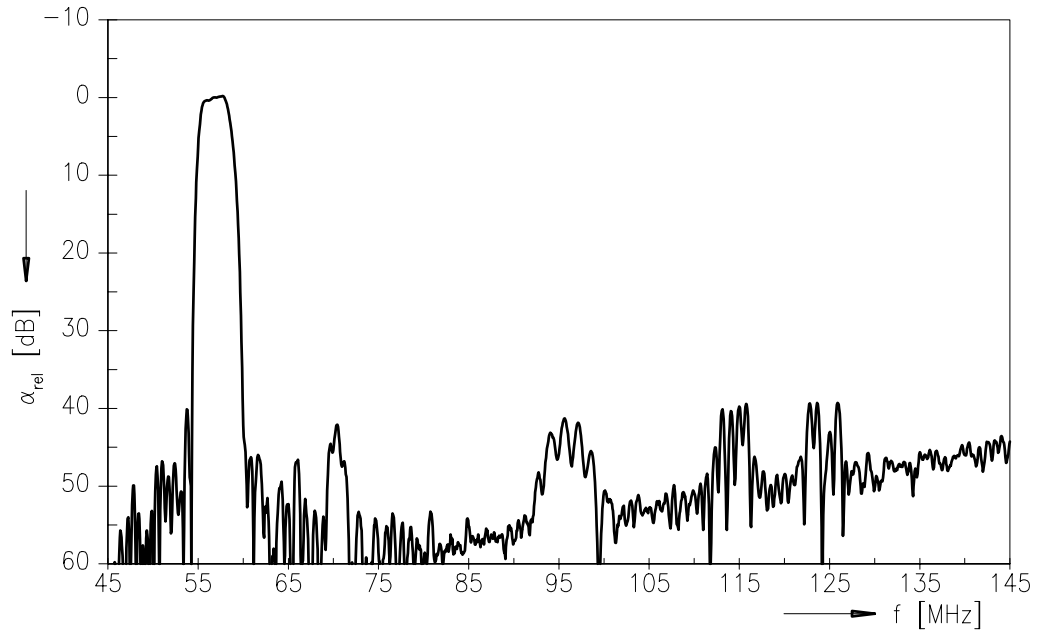
Frequency response



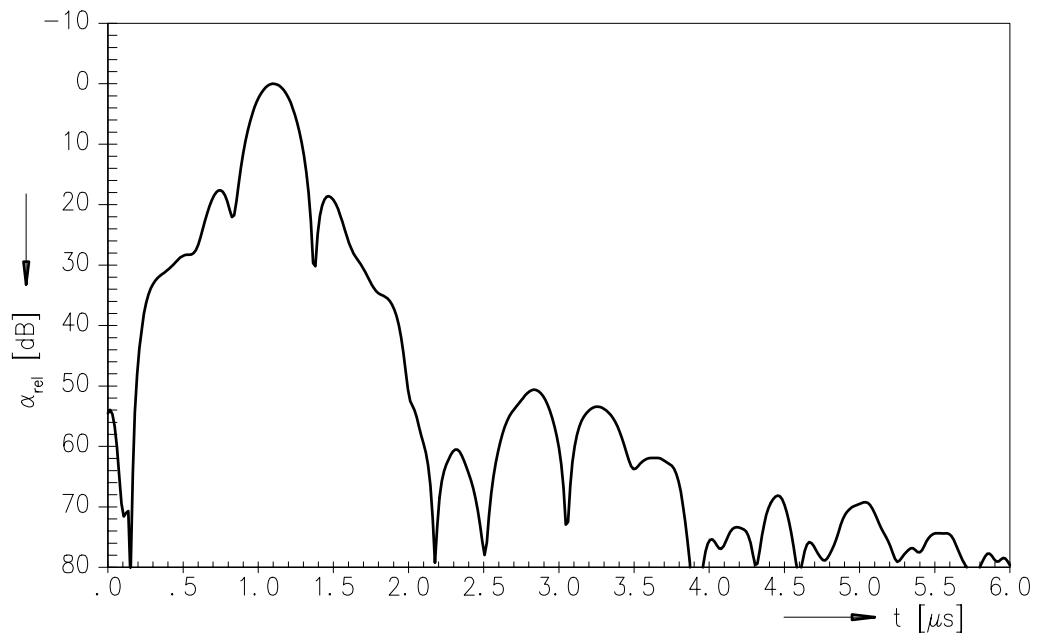


Data Sheet

Frequency response



Time domain response





SAW Components

N 3958 M

IF Filter for Video Applications

58,75 MHz

Data Sheet

Published by EPCOS AG

Surface Acoustic Wave Components Division, SAW CE MM PD

P.O. Box 80 17 09, D-81617 München

© EPCOS AG 2001. All Rights Reserved.

As far as patents or other rights of third parties are concerned, liability is only assumed for components per se, not for applications, processes and circuits implemented within components or assemblies.

The information describes the type of component and shall not be considered as assured characteristics.

Terms of delivery and rights to change design reserved.

For questions on technology, prices and delivery please contact the sales offices of EPCOS AG or the international representatives.

Due to technical requirements components may contain dangerous substances. For information on the type in question please also contact one of our sales offices.