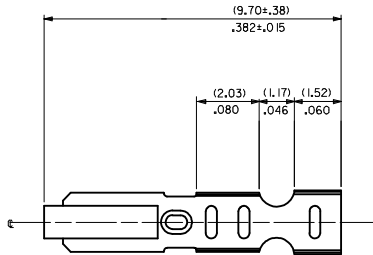
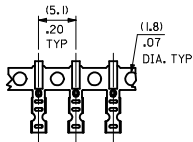
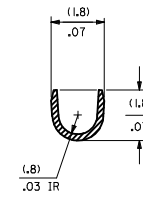
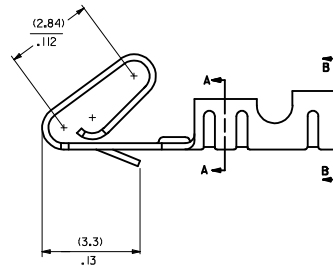
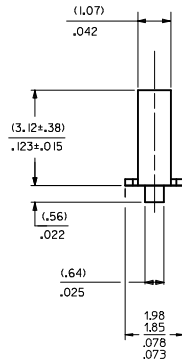


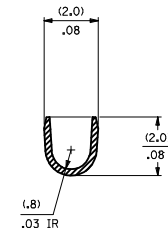
CARRIER VIEW



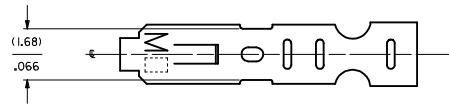
- NOTES:
1. MATERIAL: 10.203±0.010/.0080±.0004 THICK BRASS
 2. FINISH: P909 - OVERALL HOT TIN DIP: (0.00254)/.000100 MIN.
 3. PRODUCT SPEC: PS-10-07
 4. PACKAGING SPECIFICATION: LOOSE FORM TERMINALS: PER PK-2759-001
CHAIN FORM TERMINALS: PER PK-2759-002
 5. CRIMP IS FOR 22-30 GA WIRE WITH (1.57)/.062 DIA INSULATION MAX.
 6. INSERTION FORCE OF TERMINAL INTO (2.54)/.100 CENTERLINE CONNECTOR IS 2.5 LBS. MAX
 7. TERMINAL RETENTION IN HOUSING IS 26.7N / 6 LBS MIN. WHEN PULLED AT THE RATE OF 25.4MM / 1 INCH PER MINUTE.
 8. DIMENSIONS GIVEN ACROSS CENTERLINES ARE SYMMETRICAL ABOUT THOSE CENTERLINES WITHIN HALF THE TOTAL TOLERANCE.
 9. THIS PART CONFORMS TO CLASS B REQUIREMENTS OF COSMETIC SPECIFICATION PS-45499-002.



SECTION A-A
BACKGROUND OMITTED

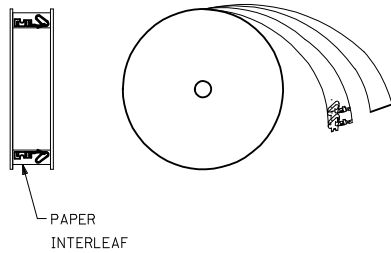


SECTION B-B
BACKGROUND OMITTED

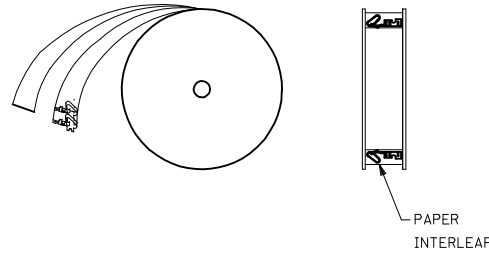


2759-(***)*	
PART NUMBER	ENGINEERING NUMBER
50-29-1638	2759-(P909)L
50-29-1757	2759-(P909)B

WINDING DETAIL "A"



WINDING DETAIL "B"



2759-(***)*

FORM
L=LOOSE
A=CHAIN, PER WINDING DETAIL 'A'
B=CHAIN, PER WINDING DETAIL 'B'

PLATING
SEE NOTE 2

ADD WINDING DETAIL EDC NO: UCF2014-4131 DRAWN/KIPPER 2014/04/08 CHK/DANGUEN 2014/04/08 APPR/FSM/TH 2014/04/21	QUALITY SYMBOLS	GENERAL TOLERANCES (UNLESS SPECIFIED)	DIMENSION STYLE	SCALE	DESIGN UNITS	THIRD ANGLE PROJECTION
	∇=0 ∇=0 ∇=0	4 PLACES ±.00 ±.001 3 PLACES ±.01 ±.010 2 PLACES ±0.25 ±.014 1 PLACE ±0.36 ±.044 0 PLACE ±.00 ±.001	MM/IN	---	INCH	CRIMP TERMINAL 22-30 GA WIRE molex
	MATERIAL NO. SEE CHART SIZE D THIS DRAWING CONTAINS INFORMATION THAT IS PROPRIETARY TO MOLEX INCORPORATED AND SHOULD NOT BE USED WITHOUT WRITTEN PERMISSION	DRAWN BY JJS CHECKED BY KSS APPROVED BY YM DATE 07/29/10 DATE 07/29/10 DATE 07/29/10	ANGLAR ±1/2° DRAFT WHERE APPLICABLE MUST REMAIN WITHIN DIMENSIONS	DATE 07/29/10 DATE 07/29/10 DATE 07/29/10	DOCUMENT NO. SD-2759-001 SHEET NO. 1 OF 1	