

THIS DRAWING IS UNPUBLISHED.

RELEASED FOR PUBLICATION NOV. 2003.

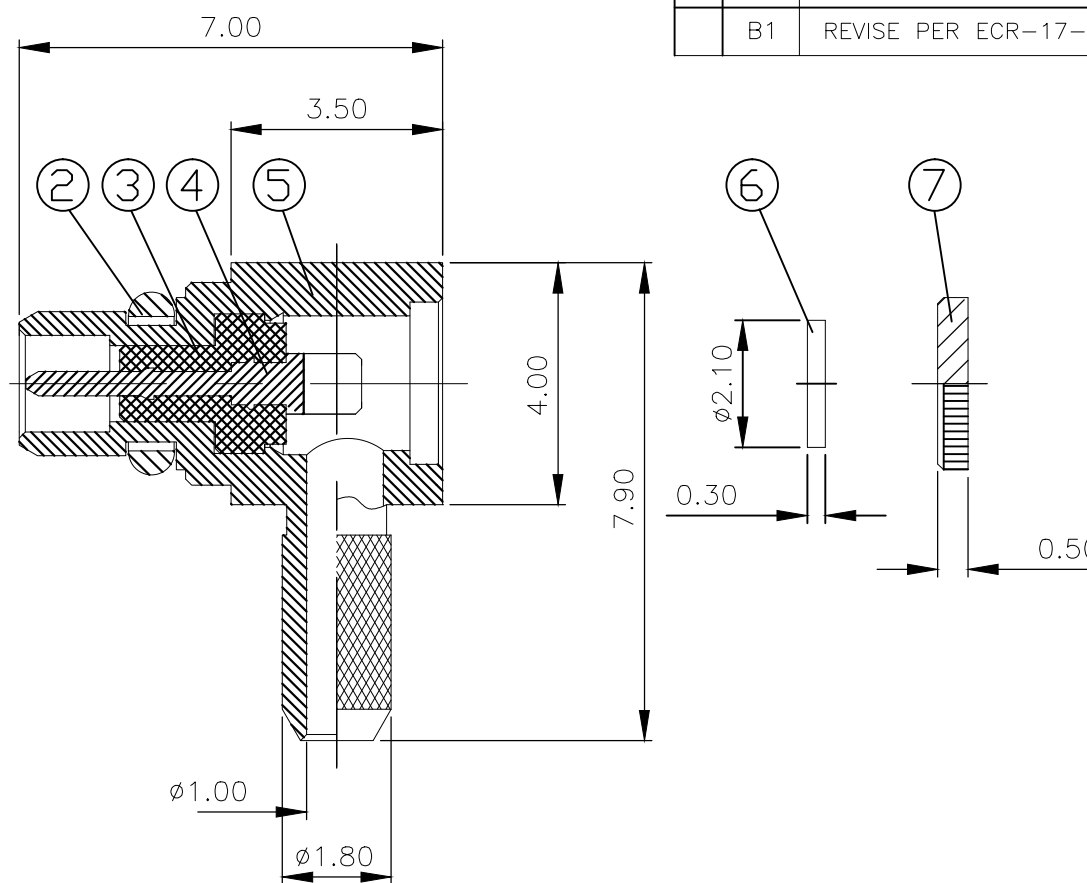
REVISIONS

© COPYRIGHT 2003 TE Connectivity

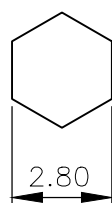
ALL RIGHTS RESERVED.

| P | LTR | DESCRIPTION              | DATE      | DWN | APVD |
|---|-----|--------------------------|-----------|-----|------|
|   | B1  | REVISE PER ECR-17-007538 | 25MAY2017 | BW  | RS   |

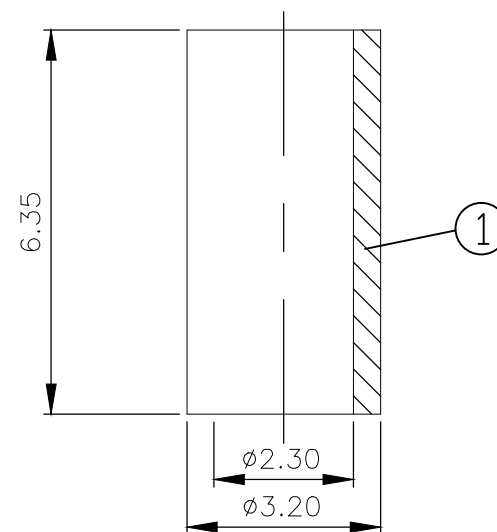
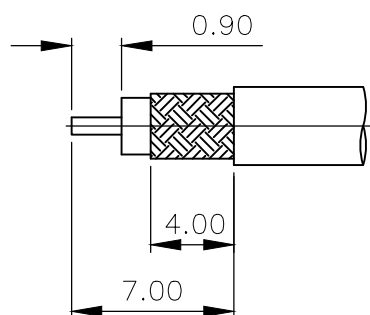
- 1 SINGLE PACK IN ACCORDANCE WITH SPEC 107-3275
- 2 100 TRAY PACK IN ACCORDANCE WITH SPEC 107-3275
- 3 0.76µm Au PLATING OVER 1.27µm Ni PLATING OVER 0.76µm Cu PLATING
- 4 0.08µm Au PLATING OVER 1.27µm Ni PLATING OVER 0.76µm Cu PLATING
- 5 HANDTOOL 9-1478240-0
- 6 DIE SET 9-1478248-0



RECOMMENDED CRIMP SLEEVE A/F HEX



RECOMMENDED CABLE STRIPPING DIM'S



| QTY  | QTY  | MATERIAL         | DESCRIPTION    | ITEM |
|------|------|------------------|----------------|------|
| 1    | 1    | BRASS            | ACCESS CAP     | 7    |
| 1    | 1    | PTFE             | INSULATOR      | 6    |
| 1    | 1    | BRASS            | BODY           | 5    |
| 1    | 1    | BRASS            | PIN            | 4    |
| 1    | 1    | PTFE             | INSULATOR      | 3    |
| 1    | 1    | BERYLLIUM COPPER | RETAINING RING | 2    |
| 1    | 1    | BRASS            | CRIMP SLEEVE   | 1    |
| 6--0 | 1--0 | MATERIAL         | DESCRIPTION    | ITEM |
| 2    | 1    |                  |                |      |

|  |  |                                   |  |                         |                    |
|--|--|-----------------------------------|--|-------------------------|--------------------|
| THIS DRAWING IS A CONTROLLED DOCUMENT. |  | DWN<br>J.SANDWELL<br>12NOV03      | TE Connectivity                                |                         |                    |
| DIMENSIONS: mm                         |  | CHK<br>S.PARLOW<br>12NOV03        |  |                         |                    |
| TOLERANCES UNLESS OTHERWISE SPECIFIED: |  | APVD<br>F.WHEELER-KING<br>12NOV03 | NAME<br>MMCX ELBOW PLUG CRIMP<br>RG178 50 OHMS |                         |                    |
| 0 PLC ± -                              |  | PRODUCT SPEC<br>108-3462          | SIZE<br>A3                                     |                         |                    |
| 1 PLC ± -                              |  | APPLICATION SPEC<br>411-3279      | CAGE CODE<br>00779                             | DRAWING NO<br>C-1634003 | RESTRICTED TO<br>- |
| 2 PLC ± -                              |  | MATERIAL<br>SEE TABLE             | SCALE<br>NTS                                   |                         |                    |
| 3 PLC ± -                              |  | FINISH<br>SEE TABLE               | SHEET<br>1 OF 1                                | REV<br>B1               |                    |
| 4 PLC ± -                              |  |                                   | CUSTOMER DRAWING                               |                         |                    |
| ANGLES ± -                             |  |                                   |  |                         |                    |