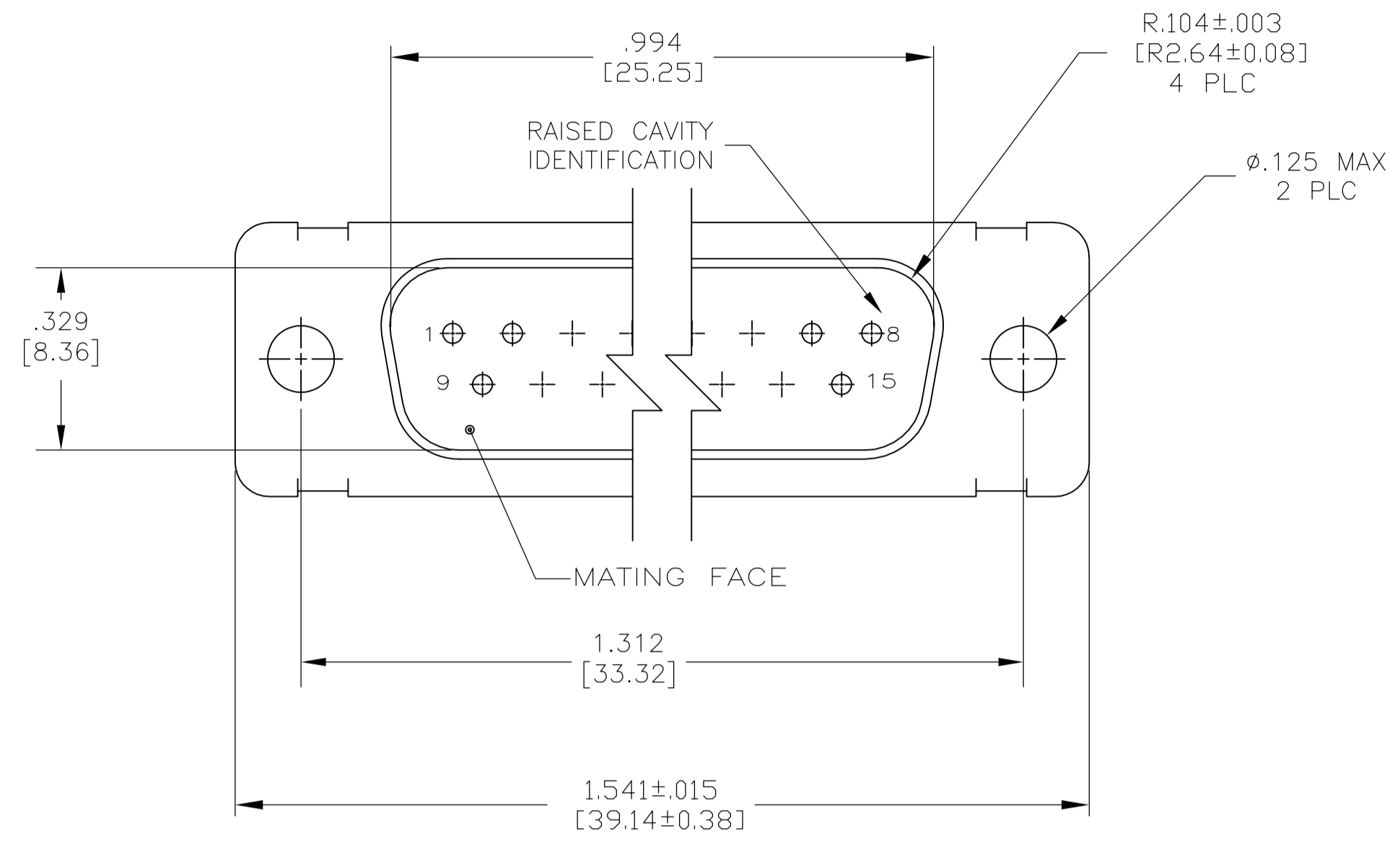
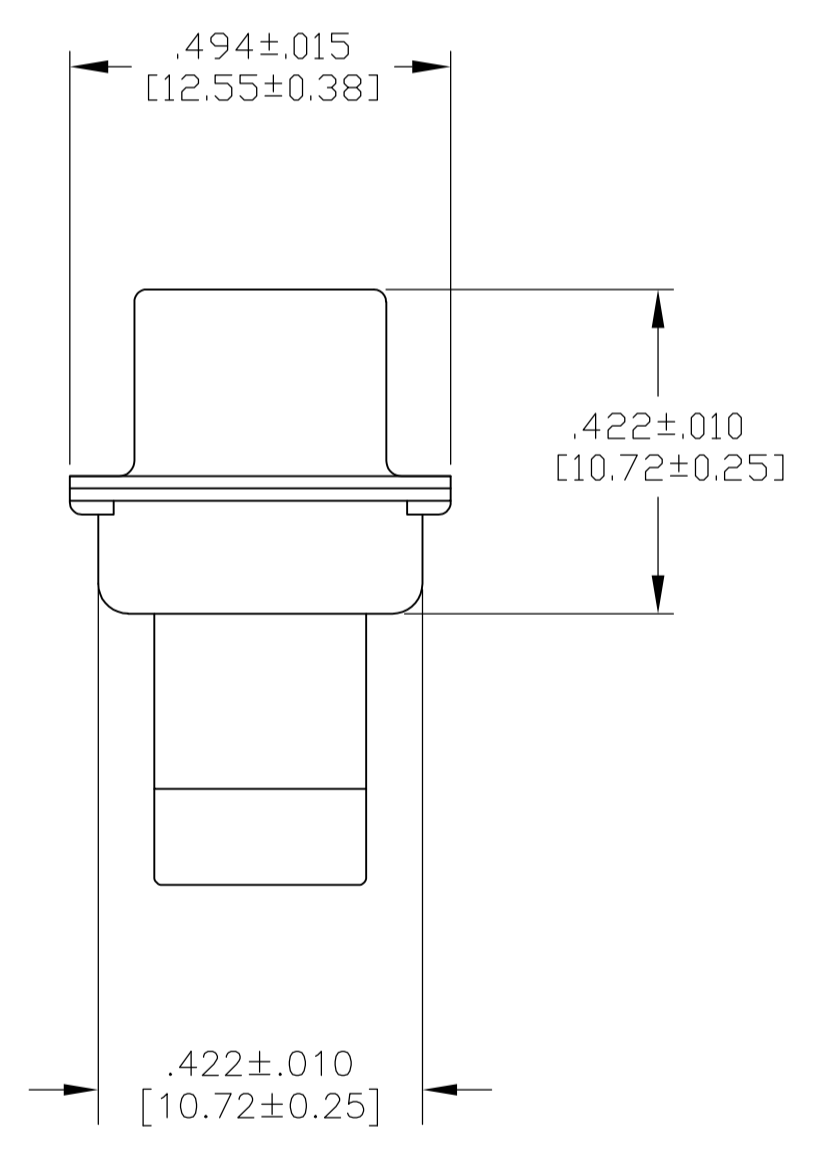
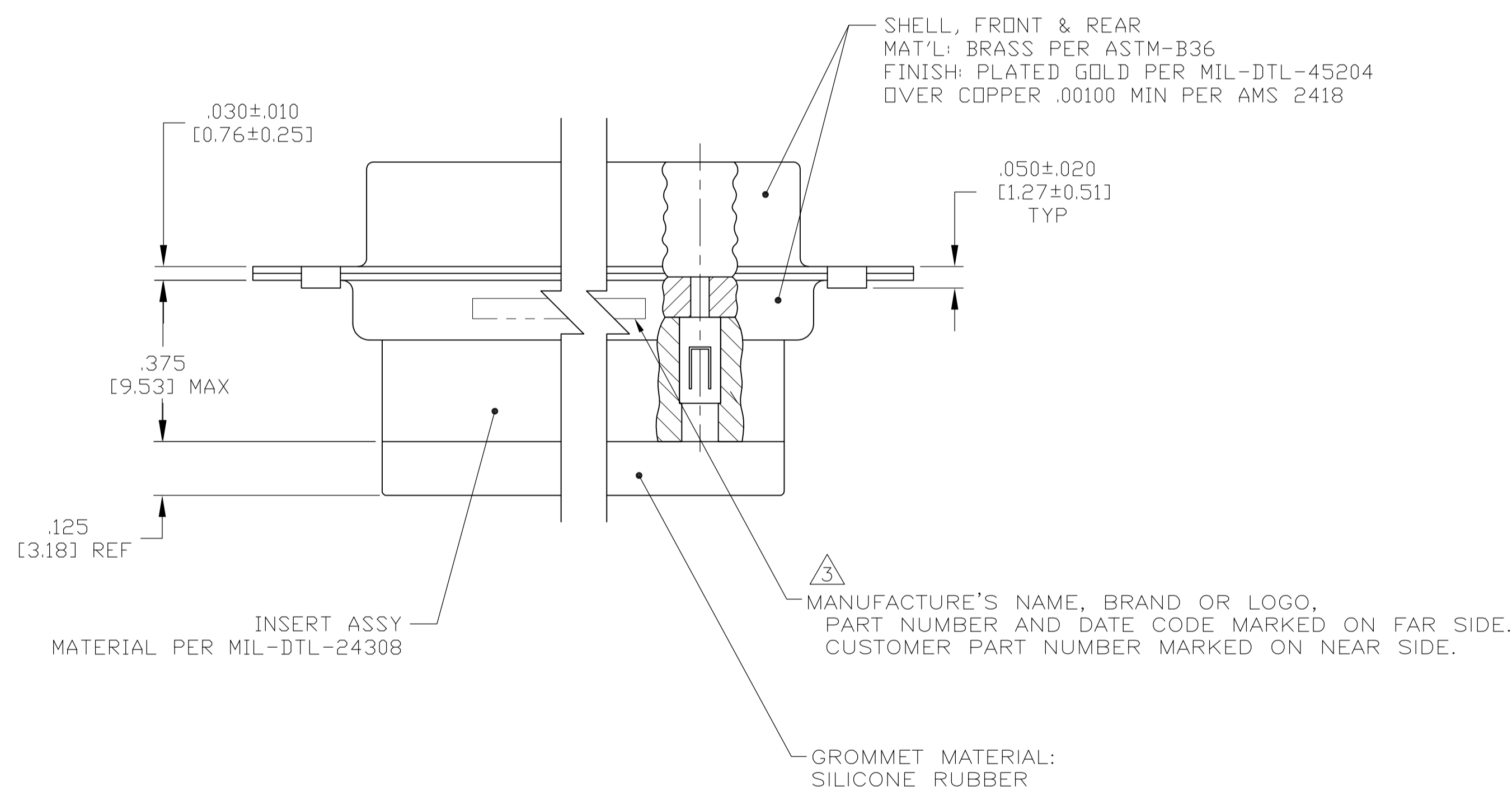


LOC		DIST		REVISIONS			
P	LTR	DESCRIPTION	DATE	DNW	APVD		
J		REV PER ECO 15-005906	5-19-15	CT	DM		



1. THIS CONNECTOR ASSEMBLY IS SUPPLIED WITH Be Cu CONTACT RETENTION CLIPS INSTALLED IN THE INSERT ASSEMBLY.
 2. THIS CONNECTOR ASSEMBLY MATES WITH ANY PLUG CONNECTOR WITH THE SAME INSERT ARRANGEMENT AND DIMENSIONAL REQUIREMENTS PER MIL-C-24308.
 3. MARKED WITH .047 [1.19]-.062 [1.57] HIGH CHARACTERS. FAR SIDE REFERS TO THE WIDE SIDE OF THE KEYSTONE. NEAR SIDE REFERS TO THE NARROW SIDE OF THE KEYSTONE.
 4. MAXIMUM WIRE INSULATION TO BE USED WITH THIS CONNECTOR ASSEMBLY IS .068 [1.73] DIAMETER.
5. SPECIAL REQUIREMENTS PER BOEING 1A01 DOCUMENT.
6. BUILT TO ORDER, NO INVENTORY OF THIS PART NUMBER IS TO BE KEPT. SINGLE LOT DATE CODE REQUIRED.



6	1A01-027PHW	1-211639-1
--	---	211639-4
6	1A01-027PHA	211639-1
REMARKS	CUSTOMER MARKING	PART NUMBER

DIMENSIONS:		TOLERANCES UNLESS OTHERWISE SPECIFIED:		APPROVED:		NAME:	
INCHES [mm]		0 PLC	± -	DESIGNER	13FEB09	DATE	13FEB09
		1 PLC	± -	CHK	13FEB09	REV	13FEB09
		2 PLC	± -	APP'D	13FEB09	PRODUCT SPEC	
		3 PLC	± .005 [0.13]	APP'D	13FEB09	APPLICATION SPEC	
		4 PLC	± -	APP'D	13FEB09	WEIGHT	
		ANGLES	± -	APP'D	13FEB09	RESTRICTED TO	
MATERIAL	FINISH	SIZE	CAGE CODE	DRAWING NO	WEIGHT	SCALE	SHEET
-	-	A1	00779	211639	-	4:1	1 OF 1
CUSTOMER DRAWING		SCALE	4:1	SHEET	1 OF 1	REV	J