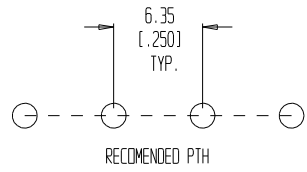


- NOTES:
1. MATERIAL: SEE TABLE
  2. FINISHES: SEE TABLE
  3. PRODUCT SPECIFICATION: NOT REQUIRED
  4. PACKAGING: NOT REQUIRED
  5. MATES WITH: NONE
  6. "XX" REFERS TO THE NUMBER OF CIRCUITS.



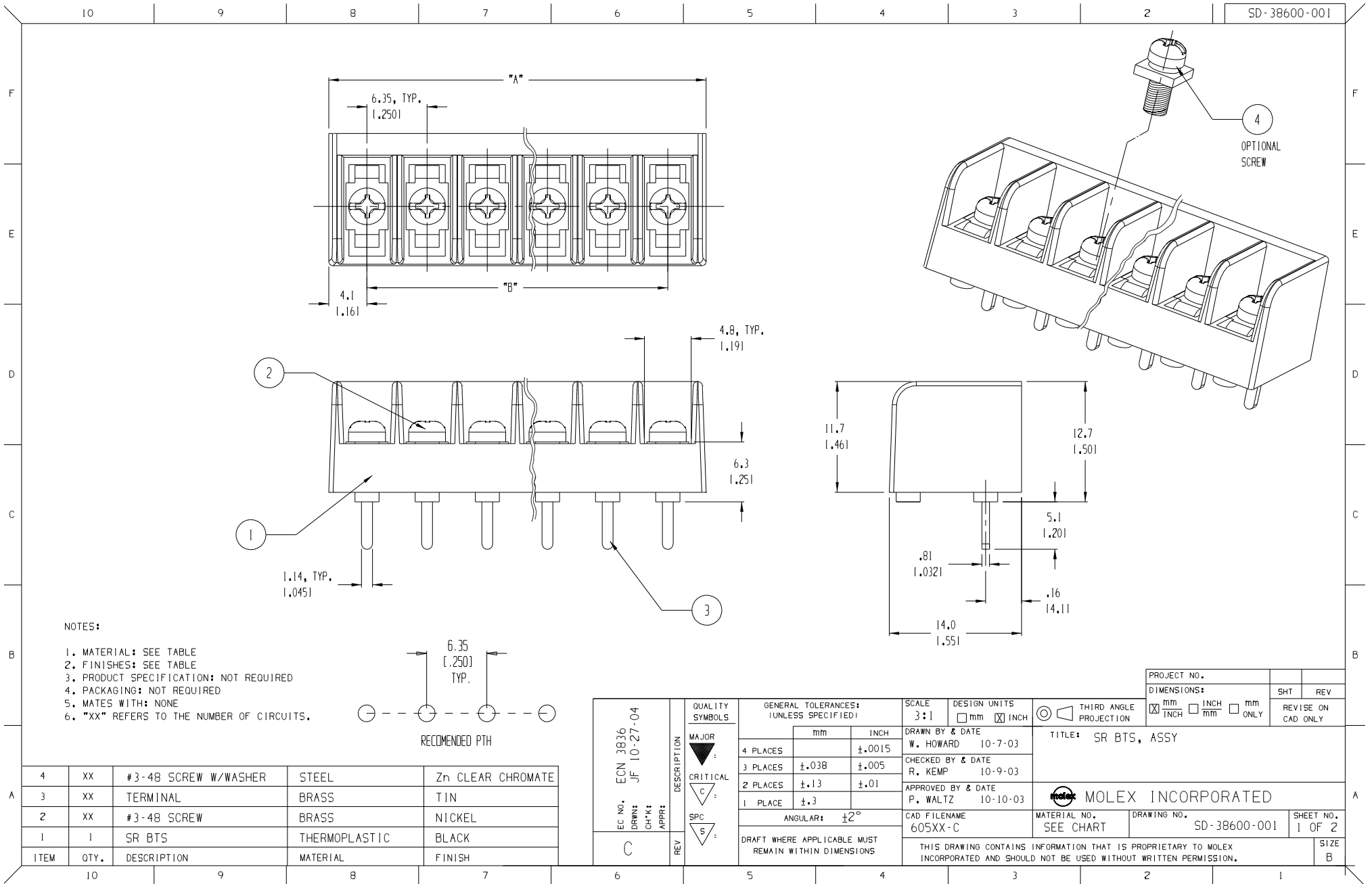
ITEM	QTY.	DESCRIPTION	MATERIAL	FINISH
4	XX	#3-48 SCREW W/WASHER	STEEL	Zn CLEAR CHROMATE
3	XX	TERMINAL	BRASS	TIN
2	XX	#3-48 SCREW	BRASS	NICKEL
1	1	SR BTS	THERMOPLASTIC	BLACK

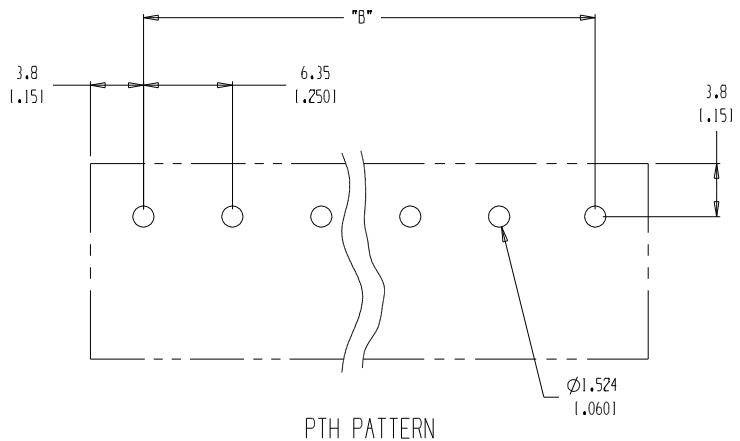
EC NO. ECN 3836	DRWN: JF 10-27-04	CHK: K	APPR: S
REV C	DESCRIPTION	MAJOR	CRITICAL
		S	S

GENERAL TOLERANCES: (UNLESS SPECIFIED)	
mm	INCH
4 PLACES	±.0015
3 PLACES	±.038 ±.005
2 PLACES	±.13 ±.01
1 PLACE	±.3
ANGULAR: ±2°	
DRAFT WHERE APPLICABLE MUST REMAIN WITHIN DIMENSIONS	

SCALE 3:1	DESIGN UNITS <input type="checkbox"/> mm <input checked="" type="checkbox"/> INCH
DRAWN BY & DATE W. HOWARD 10-7-03	
CHECKED BY & DATE R. KEMP 10-9-03	
APPROVED BY & DATE P. WALTZ 10-10-03	
CAD FILENAME 605XX-C	TITLE: SR BTS, ASSY

PROJECT NO.	SHT	REV
DIMENSIONS:	REVISE ON CAD ONLY	
<input checked="" type="checkbox"/> mm <input type="checkbox"/> INCH	<input type="checkbox"/> mm <input type="checkbox"/> ONLY	
MATERIAL NO. SEE CHART		
DRAWING NO. SD-38600-001	SHEET NO. 1 OF 2	
THIS DRAWING CONTAINS INFORMATION THAT IS PROPRIETARY TO MOLEX INCORPORATED AND SHOULD NOT BE USED WITHOUT WRITTEN PERMISSION.		
	SIZE	B





△

NUMBER OF CIRCUITS "XX"	DIM. "A"		DIM. "B"		MATERIAL NO. (OPT -C, -50)	MATERIAL NO. (OPT -C)	MATERIAL NO. (INSULATOR)
02	14.48	(1.570)	6.35	(1.250)	38600-7802	38600-6602	38608-2735
03	20.83	(1.820)	12.70	(1.500)	38600-7803	38600-6603	38608-2736
04	27.18	(1.070)	19.05	(1.750)	38600-7804	38600-6604	38608-2737
05	33.53	(1.320)	25.40	(1.000)	38600-7805	38600-6605	38608-2738
06	39.88	(1.570)	31.75	(1.250)	38600-7806	38600-6606	38608-2739
07	46.23	(1.820)	38.10	(1.500)	38600-7807	38600-6607	38608-2740
08	52.58	(2.070)	44.45	(1.750)	38600-7808	38600-6608	38608-2741
09	58.93	(2.320)	50.80	(2.000)	38600-7809	38600-6609	38608-2742
10	65.28	(2.570)	57.15	(2.250)	38600-7810	38600-6610	38608-2743
11	71.63	(2.820)	63.50	(2.500)	38600-7811	38600-6611	38608-2744
12	77.98	(3.070)	69.85	(2.750)	38600-7812	38600-6612	38608-2745
13	84.33	(3.320)	76.20	(3.000)	38600-7813	38600-6613	38608-2746
14	90.68	(3.570)	82.55	(3.250)	38600-7814	38600-6614	38608-2747
15	97.03	(3.820)	88.90	(3.500)	38600-7815	38600-6615	38608-2748
16	103.38	(4.070)	95.25	(3.750)	38600-7816	38600-6616	38608-2749
17	109.73	(4.320)	101.60	(4.000)	38600-7817	38600-6617	38608-2750
18	116.08	(4.570)	107.95	(4.250)	38600-7818	38600-6618	38608-2751
19	122.43	(4.820)	114.30	(4.500)	38600-7819	38600-6619	38608-2752
20	128.78	(5.070)	120.65	(4.750)	38600-7820	38600-6620	38608-2753
21	135.13	(5.320)	127.00	(5.000)	38600-7821	38600-6621	38608-2754
22	141.48	(5.570)	133.35	(5.250)	38600-7822	38600-6622	38608-2755
23	147.83	(5.820)	139.70	(5.500)	38600-7823	38600-6623	38608-2756
24	154.18	(6.070)	146.05	(5.750)	38600-7824	38600-6624	38608-2757
25	160.53	(6.320)	152.40	(6.000)	38600-7825	38600-6625	38608-2758
26	166.88	(6.570)	158.75	(6.250)	38600-7826	38600-6626	38608-2759
27	173.23	(6.820)	165.10	(6.500)	38600-7827	38600-6627	38608-2760
28	179.58	(7.070)	171.45	(6.750)	38600-7828	38600-6628	38608-2761
29	185.93	(7.320)	177.80	(7.000)	38600-7829	38600-6629	38608-2762
30	192.28	(7.570)	184.15	(7.250)	38600-7830	38600-6630	38608-2763
31	198.63	(7.820)	190.50	(7.500)	38600-7831	38600-6631	38608-2764
32	204.98	(8.070)	196.85	(7.750)	38600-7832	38600-6632	38608-2765

EC NO. SEE SHEET DRAWN: ONE CH: K1 APPR:	QUALITY SYMBOLS MAJOR CRITICAL SPC	GENERAL TOLERANCES: (UNLESS SPECIFIED) mm INCH 4 PLACES ±.0015 3 PLACES ±.038 ±.005 2 PLACES ±.13 ±.01 1 PLACE ±.3 ANGULAR: ±2° DRAFT WHERE APPLICABLE MUST REMAIN WITHIN DIMENSIONS	SCALE 3:1 DESIGN UNITS <input type="checkbox"/> mm <input checked="" type="checkbox"/> INCH DRAWN BY & DATE W. HOWARD 10-7-03 CHECKED BY & DATE R. KEMP 10-9-03 APPROVED BY & DATE P. WALTZ 10-10-03	PROJECT NO. DIMENSIONS: <input checked="" type="checkbox"/> mm <input type="checkbox"/> INCH <input type="checkbox"/> mm ONLY SHT REV REVISE ON CAD ONLY
			THIRD ANGLE PROJECTION TITLE: SR BTS, ASSY MOLEX INCORPORATED CAD FILENAME: 605XX-C MATERIAL NO. SEE CHART DRAWING NO. SD-38600-001 SHEET NO. 2 OF 2 THIS DRAWING CONTAINS INFORMATION THAT IS PROPRIETARY TO MOLEX INCORPORATED AND SHOULD NOT BE USED WITHOUT WRITTEN PERMISSION.	