

4

3

2

1

THIS DRAWING IS UNPUBLISHED.

RELEASED FOR PUBLICATION

© COPYRIGHT

ALL RIGHTS RESERVED.

LOC DIST


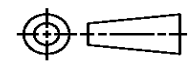
REVISIONS

P	LTR	DESCRIPTION	DATE	DWN	APVD
	A1	ECR-12-016261	14SEP2012	XZ	SX

REPLACED BY OCEAN STYLE APPLICATOR PART NUMBER 2151101-1

FOR REPLACEMENT PARTS FOR APPLICATOR 1528793
REFER TO ADDITIONAL PAGE(S). SPARE PARTS KIT (IF LISTED)
WILL REMAIN AVAILABLE.

THE REPLACEMENT OCEAN STYLE APPLICATOR HAS THE
SAME TERMINATOR/PRESS INTERFACE AS APPLICATOR
1528793

THIS DRAWING IS A CONTROLLED DOCUMENT.		DWN X. ZHAO	 TE Connectivity			
DIMENSIONS:		CHK S. XI				
		APVD S. XI	NAME			
TOLERANCES UNLESS OTHERWISE SPECIFIED: 0 PLC ± 1 PLC ± 2 PLC ± 3 PLC ± 4 PLC ± ANGLES ±		PRODUCT SPEC	FINE ADJUST SIDE FEED HDI APPLICATOR			
MATERIAL		APPLICATION SPEC	SIZE	CAGE CODE	DRAWING NO	RESTRICTED TO
FINISH		WEIGHT	A3		©- 1528793	
			SCALE	SHEET 1 OF 2	REV A1	

Dimensioning and tolerancing per ASME Y14.5M-2009

A

B

D

A

B

D

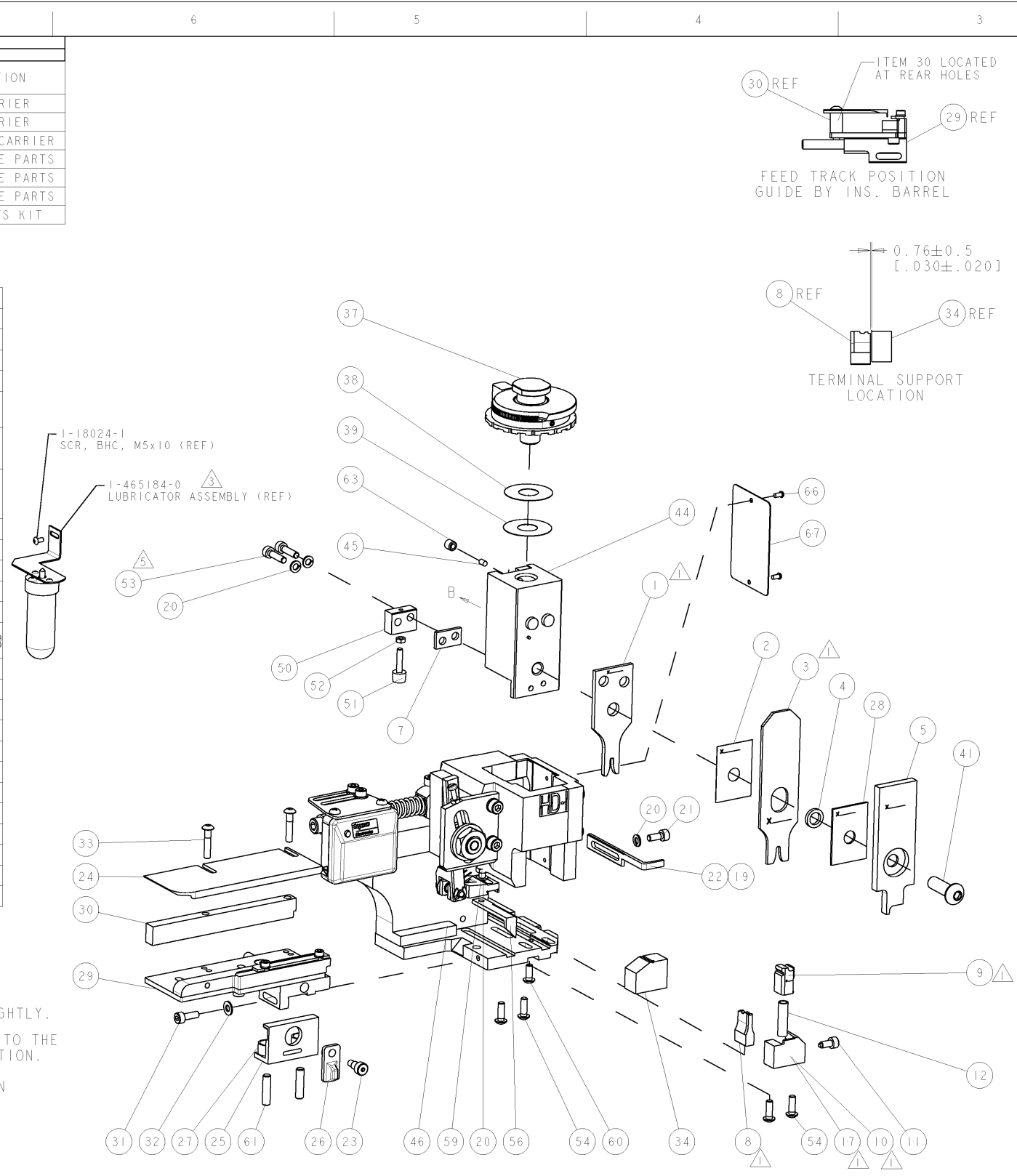
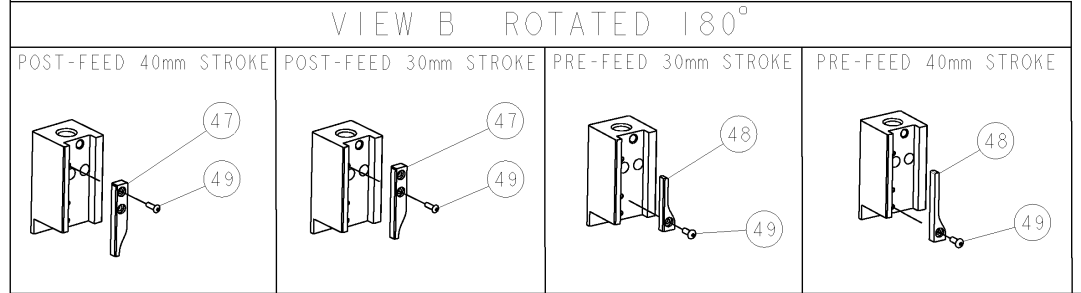
Dimensioning and tolerancing per ASME Y14.5M-2009

PART NUMBER	REV	TERMINATOR	FEED TYPE	DESCRIPTION
1528793-1	A	LEADMAKER	MECH POST FEED	CUTS CARRIER
1528793-2	A	BENCH	MECH PRE FEED	CUTS CARRIER
1528793-6	A	LEADMAKER	MECH POST FEED	CONTINUOUS CARRIER
7-1528793-1	A	LEADMAKER	MECH POST FEED	-1 AND SPARE PARTS
7-1528793-2	A	BENCH	MECH PRE FEED	-2 AND SPARE PARTS
7-1528793-6	A	LEADMAKER	MECH POST FEED	-6 AND SPARE PARTS
7-1528793-7	A	-	-	SPARE PARTS KIT

CRIMP DATA		TYCO TERMINAL		TYCO CRIMP SPECS	
TERMINAL NAME: CTC, PIN & SOCKET ASSY .062 TYPE III+					
CRIMP	SIZE	TYPE	RANGE		
WIRE	2.29 [.090 IN]	F	0.75-2.00mm ² or 18-14 AWG		
INSUL	3.05 [.120 IN]	O	2.03-2.79 [.080-.110 IN]		
WIRE STRIP LENGTH 3.58-4.34 [.141-.171 IN]		APPL INSTRUCTIONS 408-8322 & 408-8490			
TERMINAL APPL SPEC 114-10004		FEED 12.70 [.500 IN]			
TERMINALS APPLIED					
SOCKET	PIN				
66358	66359				
WIRE SIZE	CRIMP HEIGHT	REF SETTINGS			
2.00mm ²	1.78 ±0.05 [.070 ±.002 IN]	A 7			
14 AWG	1.73 ±0.05 [.068 ±.002 IN]	B 0			
1.50mm ²	1.65 ±0.05 [.065 ±.002 IN]	B 5			
16 AWG	1.50 ±0.05 [.059 ±.002 IN]	C 8			
1.00mm ²	1.47 ±0.05 [.058 ±.002 IN]	C 9			
0.75mm ²	1.37 ±0.05 [.054 ±.002 IN]	D 5			
18 AWG	1.32 ±0.05 [.052 ±.002 IN]	D 9			

- △ RECOMMENDED SPARE PARTS.
2. GREASE RAM, CAM, CAM FOLLOWER AND FEED ROD LIGHTLY.
- △ CERTAIN TERMINALS REQUIRE LUBRICATION. REFER TO THE APPLICATOR INSTRUCTION SHEET FOR MORE INFORMATION.
4. LUBRICATE DAILY PER THE APPLICATOR INSTRUCTION SHEET SUPPLIED WITH THE APPLICATOR.
- △ CUT TO LENGTH AT ASSEMBLY.

*** WARNING**
ON INSTALLATION, SET WIRE DISC TO LARGEST WIRE SIZE SETTING. USE OF SETTINGS BELOW MIN. REQUIRED CRIMP HEIGHT SETTING WILL CAUSE DAMAGE TO CRIMP TOOLING.



SET UP GAGE		LOC	DIST	REVISIONS				
458637-3		A	66	REV	DESCRIPTION	DATE	BY	APPV
		A		SEE ECO-07-012677		JUN2007	LJL	MC

-	-	-	-	-	-	-	-	-	73
-	-	-	-	-	-	-	-	-	72
-	1	1	1	1	1	1	1338705-3	DOCUMENTATION PACKAGE	71
-	-	-	-	-	-	-	-	-	70
-	-	-	-	-	-	-	-	-	69
-	-	-	-	-	-	-	-	-	68
-	1	1	1	1	1	1	461264-5	PLATE, IDENTIFICATION	67
-	2	2	2	2	2	2	21017-2	SCREW, DRIVE	66
-	-	-	-	-	-	-	-	-	65
-	-	-	-	-	-	-	-	-	64
-	1	1	1	1	1	1	3-18031-0	SCR, SET, CUP POINT M6 X 6.0	63
-	-	-	-	-	-	-	-	-	62
-	2	2	2	2	2	2	2-18032-5	SCR, SET, FLT POINT M5 X 20.0	61
-	1	1	1	1	1	1	18024-7	SCR, BTN SKT HD CAP (M4 X 10.0)	60
-	1	1	1	1	1	1	5-18022-2	SCR, HEX HD CAP M4 X 8.0	59
-	-	-	-	-	-	-	-	-	58
-	-	-	-	-	-	-	-	-	57
-	1	1	1	1	1	1	1338685-1	PAWL, FEED	56
-	-	-	-	-	-	-	-	-	55
-	4	4	4	4	4	4	18024-8	SCR, BTN SKT HD CAP (M4 X 12.0)	54
-	2	2	2	2	2	2	1-18023-3	SCR, SKT HD CAP M4 X 16.0	53
-	1	1	1	1	1	1	18030-1	NUT, HEX, REG M3	52
-	1	1	1	1	1	1	811242-5	BUMPER, HOLD DOWN	51
-	1	1	1	1	1	1	690753-2	SPACER, TONKER	50
-	1	1	1	1	1	1	18024-3	SCR, BTN SKT HD CAP (M3 X 10.0)	49
-	-	-	-	-	-	-	-	-	48
-	-	-	-	-	-	-	-	-	47
-	-	-	-	-	-	-	-	-	46
-	-	-	-	-	-	-	-	-	45
-	-	-	-	-	-	-	-	-	44
-	-	-	-	-	-	-	-	-	43
-	-	-	-	-	-	-	-	-	42
-	1	1	1	1	1	1	2-18024-6	SCR, BTN SKT HD CAP (M8 X 25.0)	41
-	-	-	-	-	-	-	-	-	40
-	1	1	1	1	1	1	690125-1	SHIM SUB-ASSY	39
-	1	1	1	1	1	1	469367-1	SHIM	38
-	1	1	1	1	1	1	879103-2	FINE ADJUST HEAD ASSEMBLY	37
-	-	-	-	-	-	-	-	-	36
-	-	-	-	-	-	-	-	-	35
-	1	1	1	1	1	1	1424186-2	SUPPORT, TERMINAL	34
-	2	2	2	2	2	2	1-18024-0	SCR, BTN SKT HD CAP (M4 X 20.0)	33
-	1	1	1	1	1	1	18027-2	WASHER, FLAT, REG M4	32
-	1	1	1	1	1	1	1-18023-2	SCR, SKT HD CAP M4 X 12.0	31
-	1	1	1	1	1	1	1320908-1	SPACER, STRIP GUIDE	30
-	1	1	1	1	1	1	1633073-1	STRIP GUIDE ASSEMBLY	29
-	1	1	1	1	1	1	1-455888-0	SPACER, CRIMPER	28
-	2	2	2	2	2	2	1-22284-0	SPRING, COMPRESSION	27
-	1	1	1	1	1	1	356835-1	LEVER, DRAG RELEASE	26
-	1	1	1	1	1	1	240792-1	DRAG, TERMINAL	25
-	1	1	1	1	1	1	1320928-3	PLATE, STRIP GUIDE	24
-	1	1	1	1	1	1	980371-4	SCR, SKT HD SHLDR 5.0 DIA X 6.0	23
-	1	1	1	1	1	1	690472-2	STRIPPER	22
-	1	1	1	1	1	1	1-18023-1	SCR, SKT HD CAP M4 X 10.0	21
-	4	4	4	4	4	4	18025-2	WASHER, SPRG LOCK, REG M4	20
-	-	-	-	-	-	-	-	-	19
-	-	-	-	-	-	-	-	-	18
-	1	-	-	-	-	-	1338684-1	SHEAR HOLDER, FRONT	17
-	-	-	-	-	-	-	-	-	16
-	-	-	-	-	-	-	-	-	15
-	-	-	-	-	-	-	-	-	14
-	-	-	-	-	-	-	-	-	13
-	1	1	1	1	1	1	3-22280-3	SPRING, COMPRESSION	12
-	1	1	1	1	1	1	356885-4	STOP, SHEAR	11
-	1	1	1	1	1	1	1320921-1	SHEAR HOLDER, FRONT, CUT	10
-	1	1	1	1	1	1	462006-1	FLOATING SHEAR, FRONT	9
-	1	2	2	2	1	1	1-1333228-6	ANVIL, COMBINATION	8
-	1	1	1	1	1	1	240641-9	SPACER	7
-	-	-	-	-	-	-	-	-	6
-	1	1	1	1	1	1	2-455889-0	DEPRESSOR, SHEAR	5
-	1	1	1	1	1	1	238011-5	BLOCK, CRIMPER SPACER	4
-	1	2	2	2	1	1	6-456135-0	CRIMPER, INSULATION O PREMIUM	3
-	1	1	1	1	1	1	455888-1	SPACER, CRIMPER	2
-	1	2	2	2	1	1	7-456406-0	CRIMPER, WIRE PREMIUM	1

-	-	-	-	-	-	-	-	-	84
-	-	-	-	-	-	-	-	-	83
-	-	-	-	-	-	-	-	-	82
-	-	-	-	-	-	-	-	-	81
-	-	-	-	-	-	-	-	-	80
-	-	-	-	-	-	-	-	-	79
-	-	-	-	-	-	-	-	-	78
-	-	-	-	-	-	-	-	-	77
-	-	-	-	-	-	-	-	-	76
-	-	-	-	-	-	-	-	-	75
-	-	-	-	-	-	-	-	-	74
-77	-76	-72	-71	-6	-2	-1	PART NO	DESCRIPTION	ITEM NO

DIMENSIONS: mm [IN]		TOLERANCES UNLESS OTHERWISE SPECIFIED:		DRAWN: L LOFHOUSE		DATE: 26APR2007	
0 PLC	±	0.15	±	APV: M. CLIFFORD	DATE: 26APR2007	NAME: tyco	
1 PLC	±	0.15	±	PRODUCT SPEC:		Tyco Electronics	
2 PLC	±	0.15	±	APPLICATION SPEC:		Harrisburg, PA 17105-3608	
3 PLC	±	0.15	±	See Table		FINE ADJUST SIDE FEED	
4 PLC	±	0.15	±	MATERIAL:		HDI APPLICATOR	
MATERIAL:		FINISH:		WEIGHT:		RESTRICTED TO:	
CUSTOMER DRAWING		SCALE: 3:5		SHEET 1 OF 1		REV A	