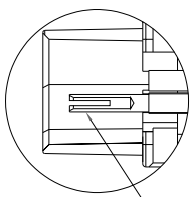
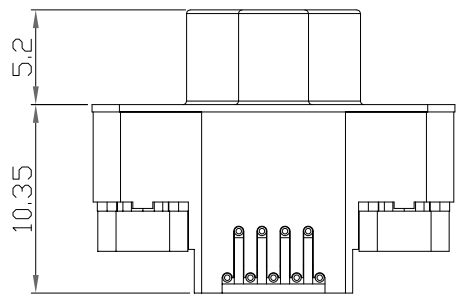
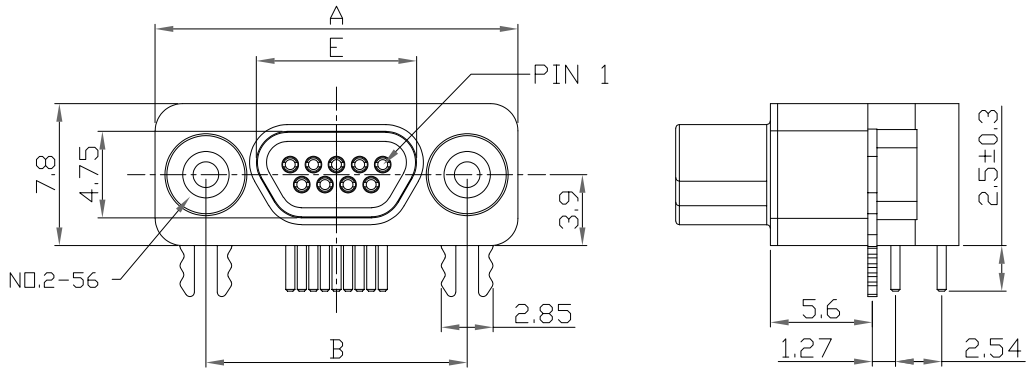
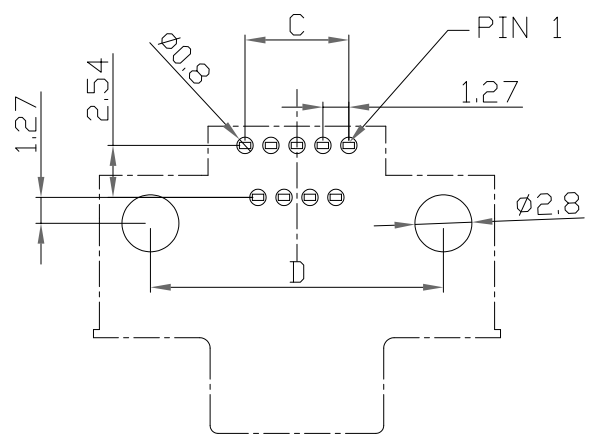


DESCRIPTION: MACHINED MICRO-D // RIGHT ANGLE SOLDER // FEMALE



EXPOSED TULIP CONTACT



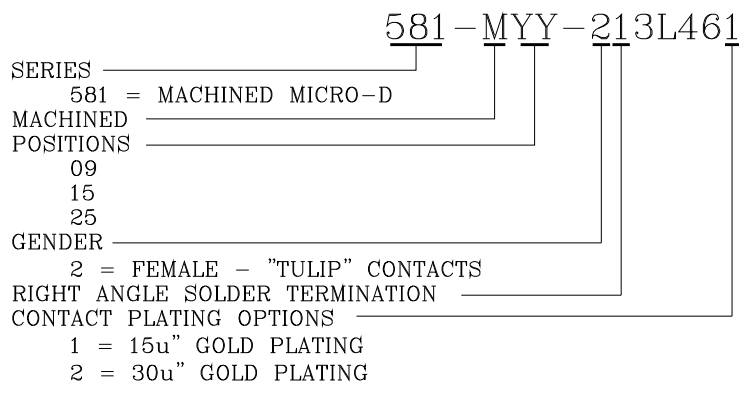
P.C.B. LAYOUT

NOTE:

MATERIAL	
INSULATOR	LCP UL94V-0, BLACK
CONTACT	BRASS
	15u" GOLD PLATING MATING AREA
	60u" TIN SOLDER AREA
FRONT SHELL	STEEL, NICKEL 60u"-100u"
BACK SHELL	BRASS, NICKEL 60u"-100u"
BOARD LOCK	BRASS, NICKEL 60u"-100u"
ELECTRICAL	
RATED CURRENT	2A
VOLTAGE	60VDC
INSULATOR RESISTANCE	1000 MOhms MIN.
CONTACT RESISTANCE	30 mOhms MAX.
ENVIRONMENT	
OPERATION TEMPERATURE	-40°C TO +125°C
PROCESS TEMPERATURE	260°C

*NOT DESIGNED TO MATE WITH NORCOMP 380 // 381 // 960 SERIES & NORCOMP MICRO-D CABLE ASSEMBLIES USING THE 960 SERIES CONNECTORS.
 **DESIGNED TO MATE WITHIN NORCOMP 58Y-M SERIES MICRO-D CONNECTORS

DIMENSIONS(mm)					
SIZE	A	B	C	D	E
9	19.93	14.35	5.08	14.35	8.80
15	23.75	18.20	8.89	18.16	12.60
25	30.10	24.55	15.24	24.51	18.95



RoHS COMPLIANT



THESE DRAWINGS AND SPECIFICATIONS ARE THE PROPERTY OF NorComp AND SHALL NOT BE REPRODUCED, COPIED OR USED AS THE BASIS FOR THE MANUFACTURE OR SALE OF APPARATUS WITHOUT WRITTEN PERMISSION.

DRAWN: J. KADEL
 DATE: 05/14/2020

TOLERANCES
 .x ±0.20
 .xx ±0.15
 .xxx ±0.10
 .xxxx ±0.05
 ANGULAR ±1°

UNITS = mm

DO NOT SCALE FROM DRAWING



SCALE: NTS	SHEET 1 OF 1	REV 5
DWG NO. 581-MYY-213L461		