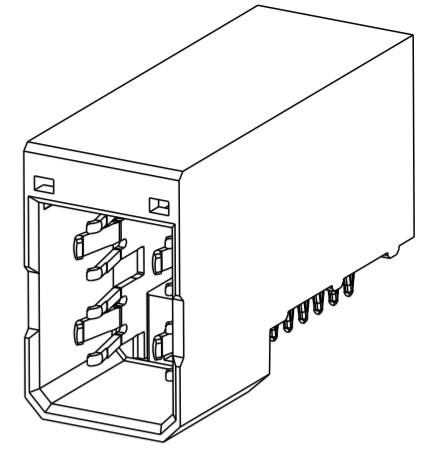
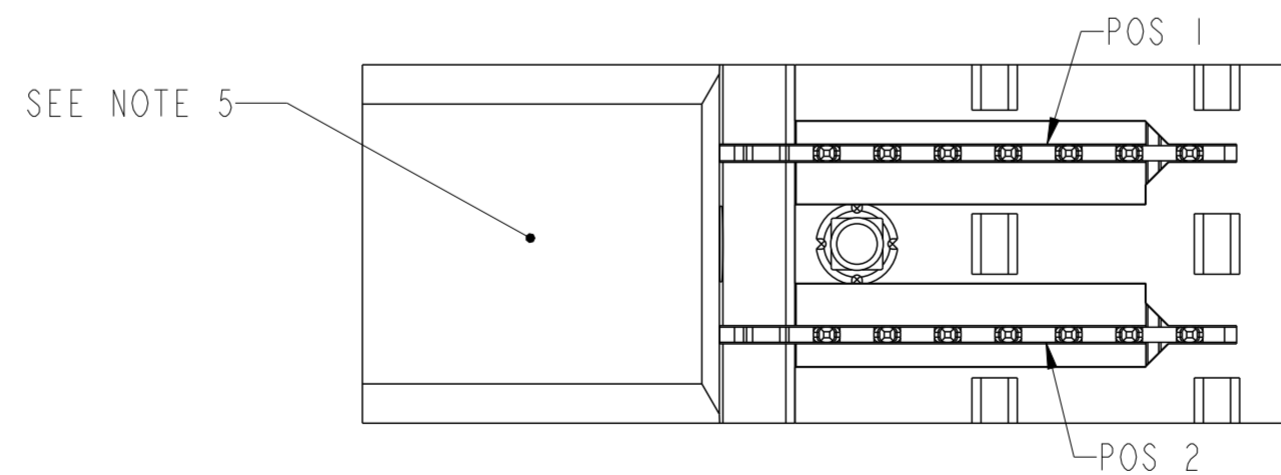
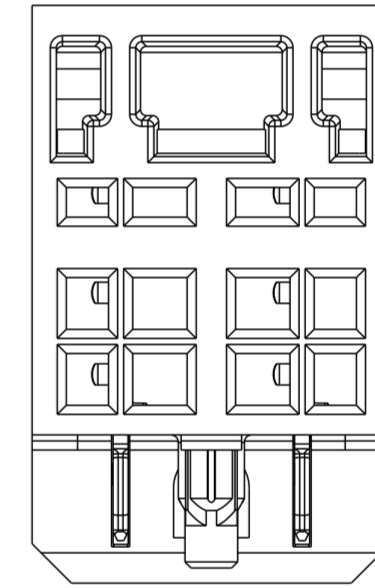
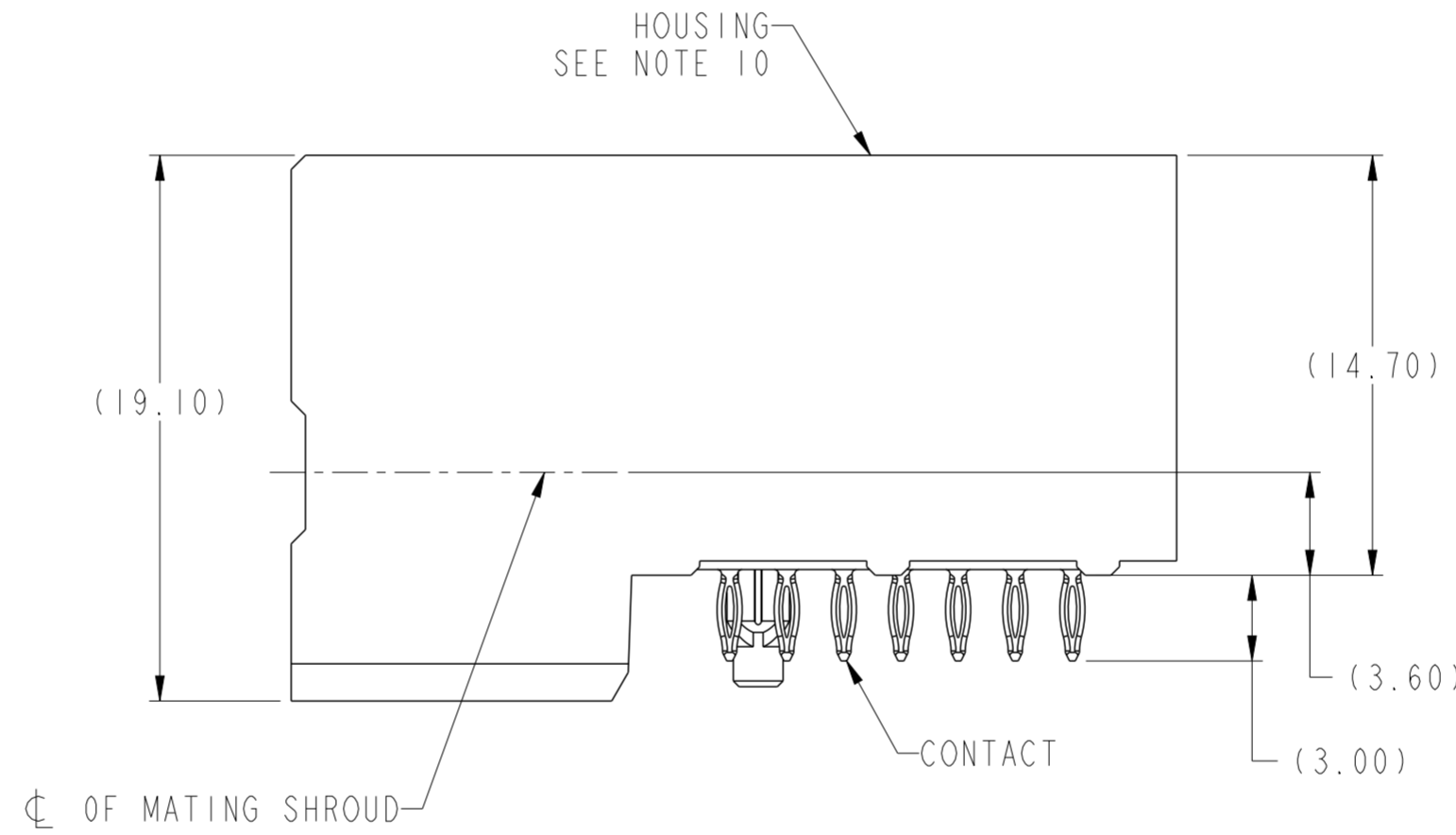
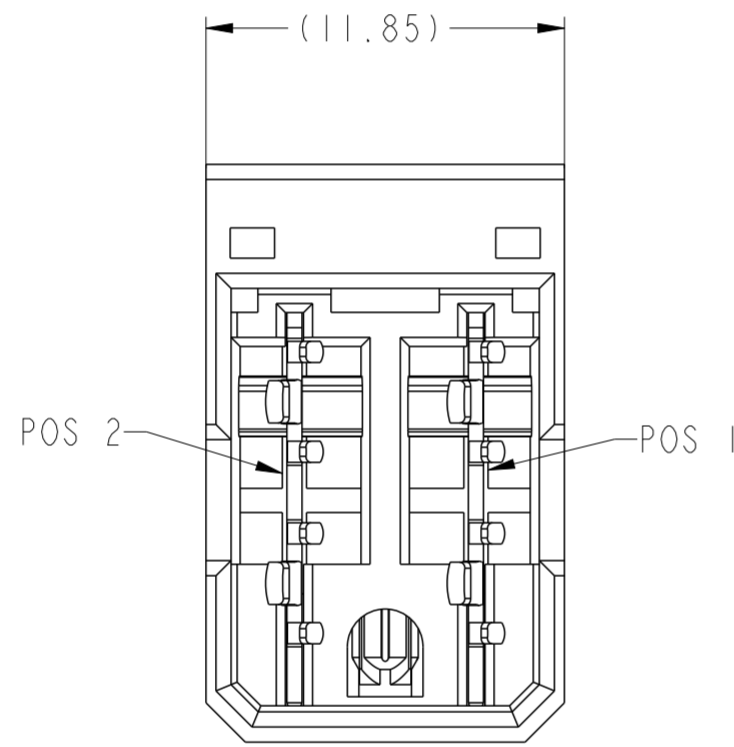
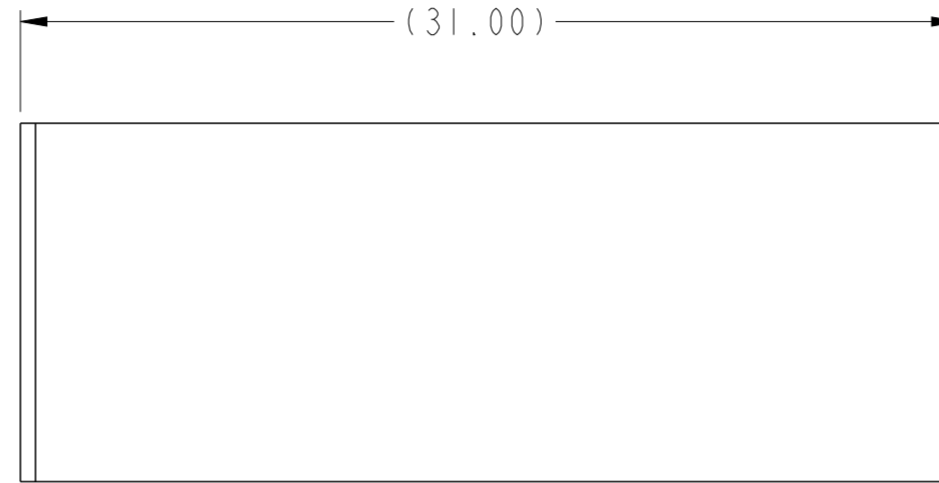


PRODUCT NUMBER (SEE NOTE 2)	CONTACT PLATING		ROHS COMPATIBILITY
	SEPARABLE INTERFACE	PRESS-FIT TAIL	
10028918-001	0.76um MIN GXT OVER NICKEL	0.5um MIN TIN-LEAD OVER NICKEL	N/A
10028918-001LF		0.5um MIN MATTE TIN OVER NICKEL	SEE NOTE 8



SCALE 2:1



spec ref	GS-12-220	dr	Chen-Hong Yan	2005/08/04	projection	MM	size	A2	scale	4:1
tolerance std	ASME Y14.5	eng	Terry Luo	2019/04/23			ecn no	ELX-DG-33324-1		
TOLERANCES UNLESS OTHERWISE SPECIFIED		chr					rel level	Released		
surface	ASME Y14.5	appr	Heaven Cen 2019/04/25				product family	2mm High Power		rel level
linear	0.X ±.3	Amphenol FCI		title		R/A HEADER ASSY 1X2		dwg no	10028918	
angular	0° ±2°			AIRMAX POWER				rev	H	
		cat. no.				Product - Customer Drw		sheet 1 of 2		

PDS: Rev :H

STATUS:Released

Printed: Apr 25, 2019

