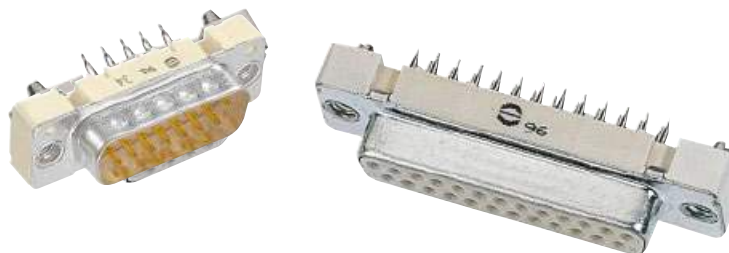


Number of contacts

9-50



Press-in, straight with grounding press-in board locks

| Identification | No. of contacts | | Part number | |
|--|-----------------|-----------------|---------------------|---------------------|
| | | | Performance level 3 | Performance level 2 |
| Performance levels Explanations see page 05.171 Other performance levels on request | | | | |
| Male connector Flange height x = 5.7 mm | | | | |
| metal shell with dimples | 9 | 09 66 164 771 . | 09 66 164 671 . | |
| | 15 | 09 66 264 771 . | 09 66 264 671 . | |
| | 25 | 09 66 364 771 . | 09 66 364 671 . | |
| Please insert digit for flange thread or fitted female screw locks | | | | |
| M3 ▶ 5 | | | | |
| 4-40 UNC ▶ 6 | | | | |
| fitted screw locks 4-40 UNC ▶ 7 ¹⁾ | | | | |
| Female connector Flange height x = 5.7 mm | | | | |
| metal shell | 9 | 09 66 154 751 . | 09 66 154 651 . | |
| | 15 | 09 66 254 751 . | 09 66 254 651 . | |
| | 25 | 09 66 354 751 . | 09 66 354 651 . | |
| | 37 | 09 66 454 751 . | 09 66 454 651 . | |
| Please insert digit for flange thread or fitted female screw locks | | | | |
| M3 ▶ 5 | | | | |
| 4-40 UNC ▶ 6 | | | | |
| fitted screw locks 4-40 UNC ▶ 7 ¹⁾ | | | | |
| Female connector Flange height x = 6 mm | | | | |
| metal shell | 9 | 09 66 154 751 . | 09 66 154 651 . | |
| | 15 | 09 66 254 751 . | 09 66 254 651 . | |
| | 25 | 09 66 354 751 . | 09 66 354 651 . | |
| | 37 | 09 66 454 751 . | 09 66 454 651 . | |
| | 50 | 09 66 554 751 . | 09 66 554 651 . | |
| Please insert digit for flange thread or fitted female screw locks | | | | |
| M3 ▶ 1 | | | | |
| 4-40 UNC ▶ 2 | | | | |
| fitted screw locks 4-40 UNC ▶ 3 ¹⁾ | | | | |

¹⁾ Fitted screw locks 4-40 UNC not normally kept in stock for performance level 3
 Connector dimensions see page 05.173. Mating conditions see page 05.171.