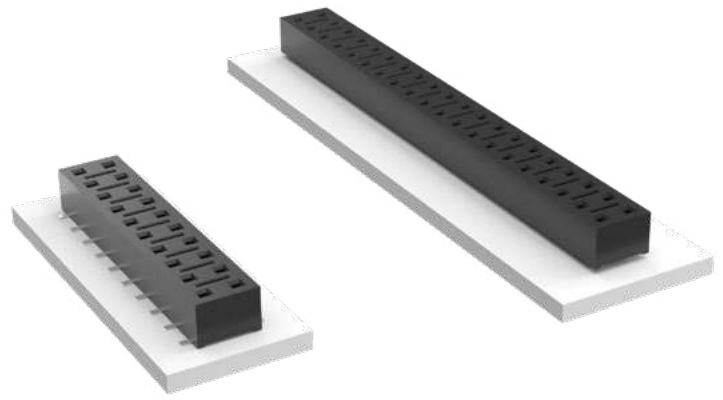


# COST-EFFECTIVE RELIABLE SOCKET

(2.54 mm) .100" PITCH • HLE SERIES



**HLE**  
**Board Mates:**  
TSW, MTSW, DW, EW,  
ZW, TLW, TSM, MTLW, HW



02 thru 50

**-F**  
= Gold flash on contact,  
Matte Tin on tail

**-L**  
= 10 μ" (0.25 μm)  
Gold on contact,  
Matte Tin on tail

Leave blank for  
Surface Mount  
(Requires -BE for  
Bottom Entry)

**-TE**  
= Through-hole  
Top Entry

**-PE**  
= Through-hole  
Pass-through  
Entry  
(Requires -BE for  
Bottom Entry)

**-BE**  
= Bottom Entry  
(Not available  
with -TE)

**-A**  
= Alignment Pin  
(4 positions min.)  
Metal or plastic at  
Samtec discretion  
(Not available with  
-TE, -PE & -LC)

**-LC**  
= Locking Clip  
(2 positions min.)  
(Not available with -A)  
(Manual placement  
required)

**-K**  
= (6.50 mm)  
.256" DIA  
Polyimide Film  
Pick & Place Pad  
(3 positions min.)  
Not available  
with -TE or  
-PE tail option

**-P**  
= Metal Pick  
& Place Pad  
(3 positions min.)

**-TR**  
= Tape & Reel  
(29 positions max.)

**-FR**  
= Full Reel  
Tape & Reel  
(must order max.  
quantity per reel;  
contact Samtec for  
quantity breaks)

## SPECIFICATIONS

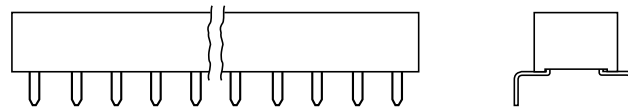
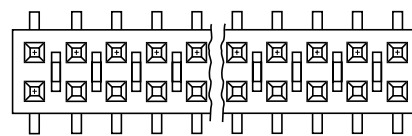
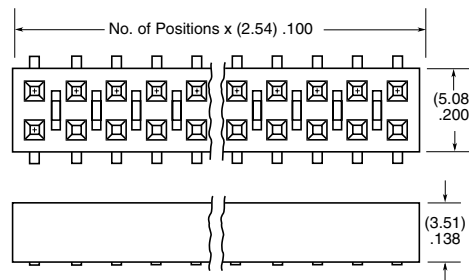
**Insulator Material:**  
Black Liquid Crystal Polymer  
**Contact Material:**  
BeCu  
**Plating:**  
Au or Sn over  
50 μ" (1.27 μm) Ni  
**Current Rating (HLE/TSM):**  
4.1 A per pin  
(2 pins powered)  
**Voltage Rating:**  
400 VAC  
**Operating Temp Range:**  
-55 °C to +125 °C  
**Insertion Depth:**  
(1.78 mm) .070" to  
(3.43 mm) .135" pass-through,  
or (2.59 mm) .102" min  
plus board thickness for  
bottom entry

## PROCESSING

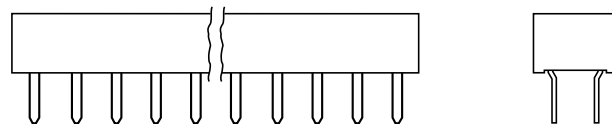
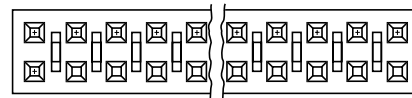
**Lead-Free Solderable:**  
Yes  
**SMT Lead Coplanarity:**  
(0.10 mm) .004" max (02-20)  
(0.15 mm) .006" max (21-50)\*  
\*(.004" stencil solution  
may be available; contact  
IPG@samtec.com)

## ALSO AVAILABLE

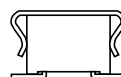
Other Platings  
(MOQ Required)



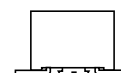
**-PE**



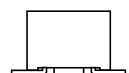
**-TE**



**-P**



**-LC**



**-A**

**Note:**  
Some lengths, styles and  
options are non-standard,  
non-returnable.