

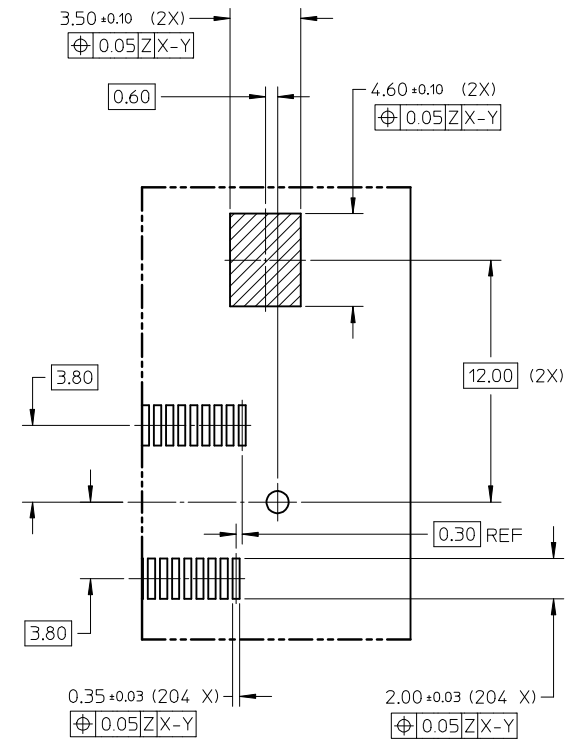
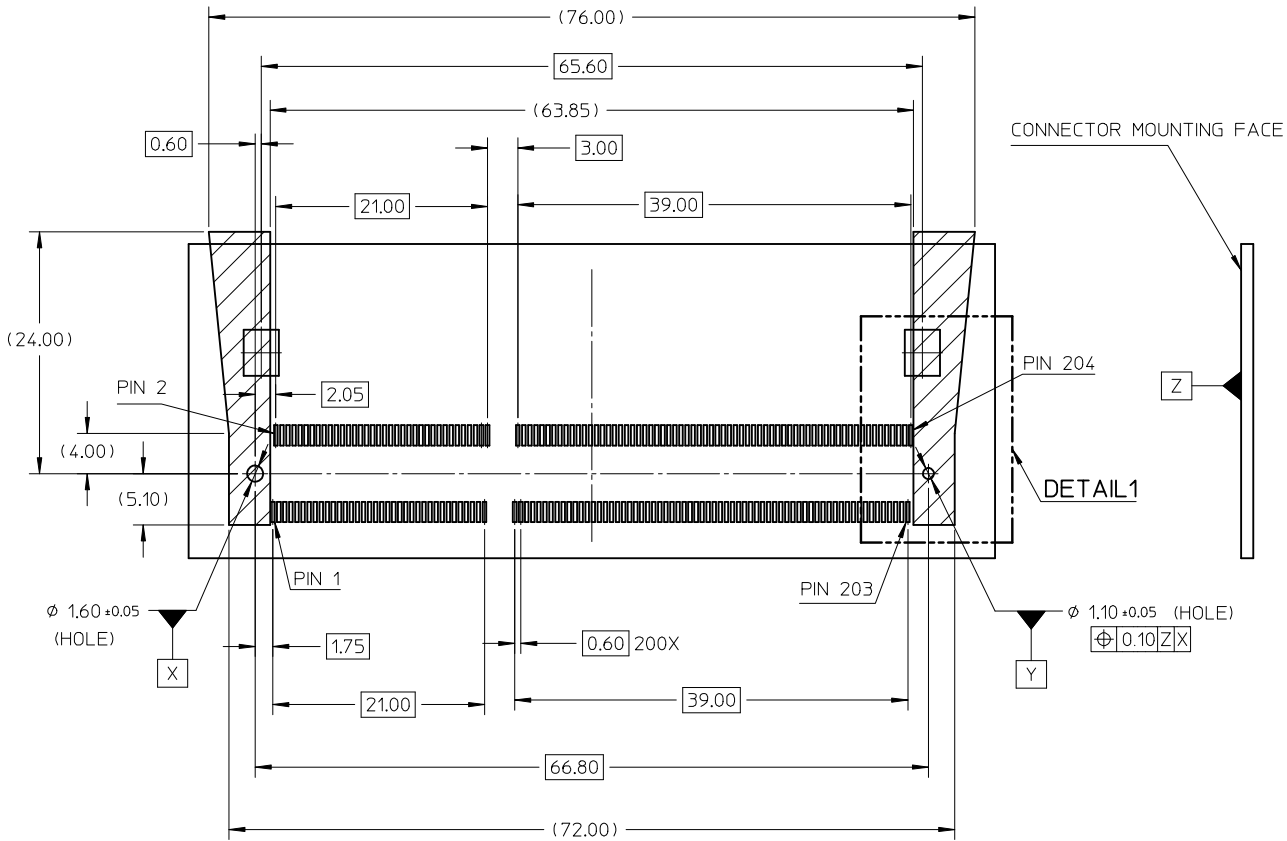
**NOTE :**

- MATERIAL:**  
HOUSING : LCP - UL94V-0, COLOR: BLACK  
CONTACTS : COPPER ALLOY  
LOCK LEVER : STAINLESS STEEL
- FINISHES:**  
CONTACT AREA : REFER TABLE.  
SOLDER TAIL AREA : GOLD FLASH OVER 50µN/1.27µM NICKEL.  
LOCK LEVER SOLDER PAD: 100µN/2.54µM MATTE TIN OVER 50µN/1.27µM NICKEL.
- RECOMMENDED MODULE LAYOUT SHALL BE AS PER JEDEC MO-268
- PRODUCT SPEC AS PER - PS-78194-001, PS-78194-003
- PART SHALL BE PACKED IN TRAY / TAPE & REEL
- EDGE OF CONTACT PADS SHALL BE FREE OF BURRS AND EXTERNAL TIE BARS
- THE ADDITION OF THIS BEVEL IS A FABRICATION OPTION AND IS NOT REQUIRED. THE BEVEL AIDS THE INSERTION OF THE MODULES INTO THE CONNECTOR.  
THE BEVEL MUST NOT ENCRORCH ONTO GOLD PADS.
- COPLANARITY INCLUDES HOLD DOWN 0.1 MAX

| PART NO.   | CONTACT AREA FINISH                      | SOLDER TAIL FINISH                 | PACKAGING   |
|------------|--|------------------------------------|-------------|
| 78194-0001 | 3µN/0.076µM GOLD OVER 50µN/1.27µM NICKEL | GOLD FLASH OVER 50µN/1.27µM NICKEL | TRAY        |
| 78194-1501 | 15µN/0.38µM GOLD OVER 50µN/1.27µM NICKEL |                                    |             |
| 78194-3001 | 30µN/0.76µM GOLD OVER 50µN/1.27µM NICKEL | GOLD FLASH OVER 50µN/1.27µM NICKEL | TAPE & REEL |
| 78194-0011 | 3µN/0.076µM GOLD OVER 50µN/1.27µM NICKEL |                                    |             |
| 78194-1511 | 15µN/0.38µM GOLD OVER 50µN/1.27µM NICKEL |                                    |             |
| 78194-3011 | 30µN/0.76µM GOLD OVER 50µN/1.27µM NICKEL |                                    |             |

|   |  |                    |                                      |   |            |   |   |   |                        |
|---|--|--------------------|--------------------------------------|---|------------|---|---|---|------------------------|
| <b>ADD GF DETAILS</b><br>EC NO: S2010-0162<br>DRWN: TARUMUGHAM<br>CHKD: CGTAN<br>APPR: SHLENI | 2009/08/28<br>2009/08/28<br>2009/09/02 | DESCRIPTION<br>REV | <b>QUALITY SYMBOLS</b><br>▽=0<br>◻=0 | <b>GENERAL TOLERANCES (UNLESS SPECIFIED)</b>  |            | <b>DIMENSION STYLE</b><br>MM ONLY       | <b>SCALE</b><br>NTS                     | <b>DESIGN UNITS</b><br>METRIC   | THIRD ANGLE PROJECTION |
|   |  |                    |                                      | 4 PLACES ± --- ± ---<br>3 PLACES ± --- ± ---<br>2 PLACES ± 0.2 ± ---<br>1 PLACE ± --- ± --- | mm    INCH | DRAWN BY: VMANICKAM<br>DATE: 2007/07/16 | TITLE:                                  | <b>DDR3 SODIMM</b><br><b>204 CKTS, 4.0MM HEIGHT</b><br><b>STANDARD ORIENTATION</b><br><b>MOLEX INCORPORATED</b> |                        |
|   |  |                    |                                      | ANGULAR ± 2 °   |            | CHECKED BY: CCTEH<br>DATE: 2007/09/03   | APPROVED BY: SHLENI<br>DATE: 2007/09/03 |   |                        |
|   |  |                    |                                      | DRAFT WHERE APPLICABLE MUST REMAIN WITHIN DIMENSIONS  |            |   |   | SEE TABLE   | SHEET NO. 1 OF 5       |

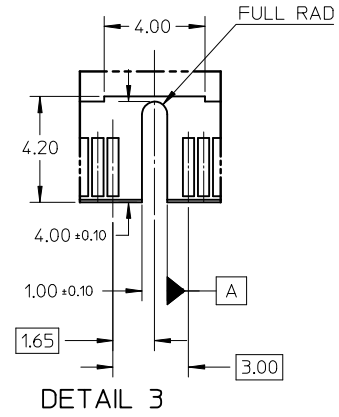
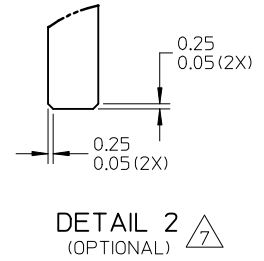
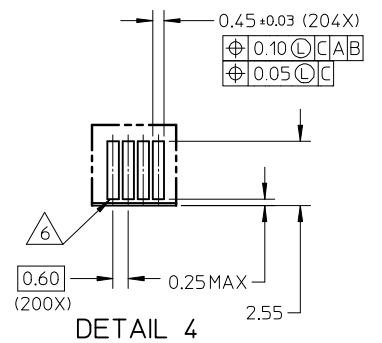
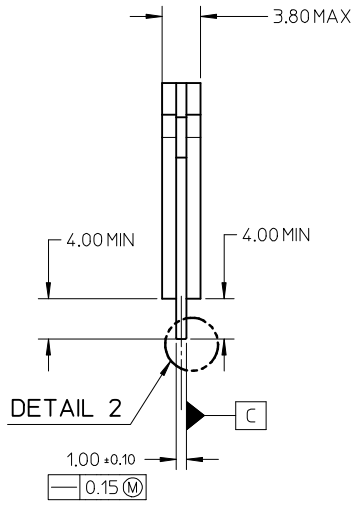
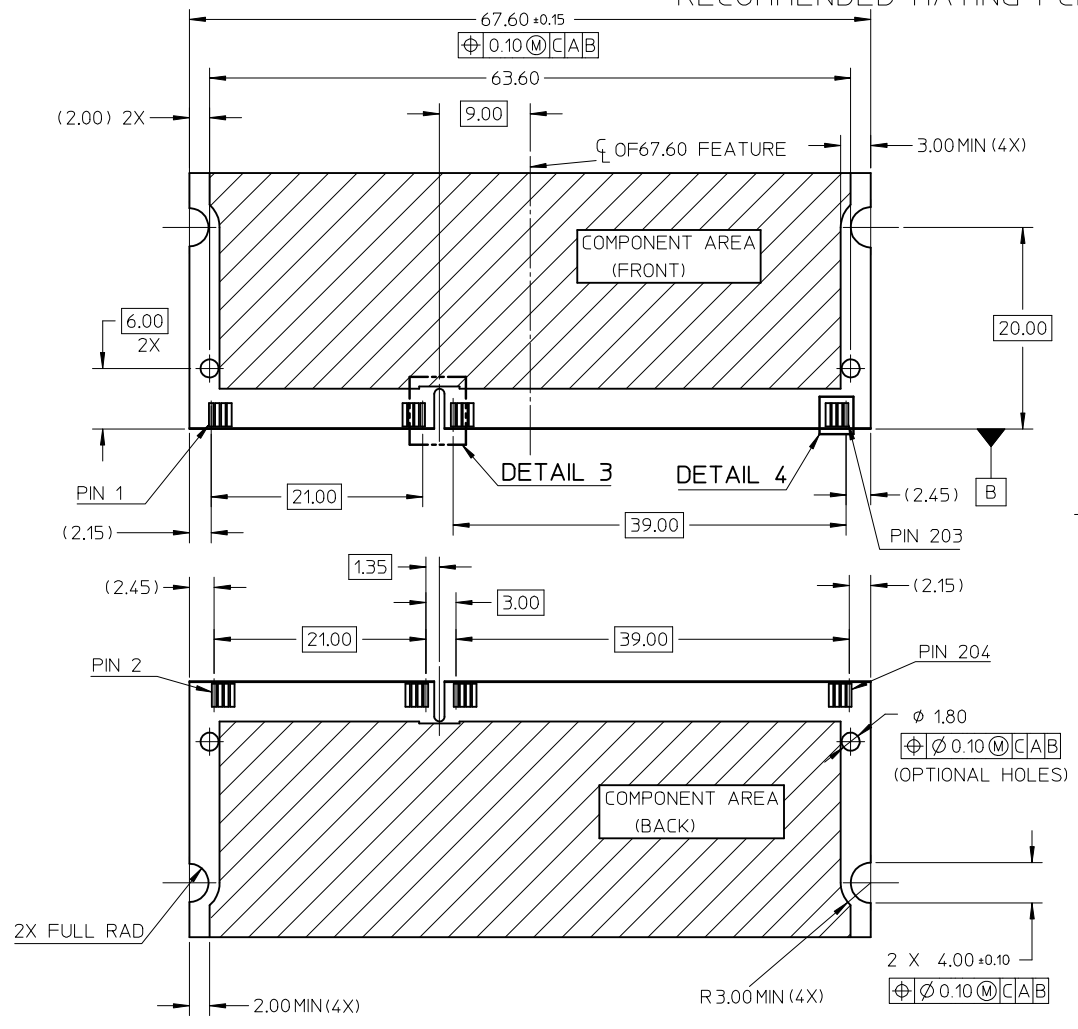
RECOMMENDED PCB LAYOUT FOR STANDARD ORIENTATION (TOP VIEW)



DETAIL1

|  |                    |                               |  |   |  |  |                        |  |
|--|--------------------|-------------------------------|--|---|--|--|------------------------|--|
| ADD GF DETAILS<br>EC NO: S2010-0162<br>DRWN: TARUNGHAM 2009/08/28<br>CHKD: CGTAN 2009/08/28<br>APPR: SHLENI 2009/09/02 | DESCRIPTION<br>REV | QUALITY SYMBOLS               | GENERAL TOLERANCES (UNLESS SPECIFIED)  | DIMENSION STYLE   | SCALE  | DESIGN UNITS   | THIRD ANGLE PROJECTION |  |
|  |                    | $\nabla = 0$<br>$\square = 0$ | mm    INCH<br>4 PLACES ± --- ± ---<br>3 PLACES ± --- ± ---<br>2 PLACES ± 0.2 ± ---<br>1 PLACE ± --- ± ---<br>ANGULAR ± 2 ° | MM ONLY   | NTS  | METRIC   |                        |  |
|  |                    |                               | DRAFT WHERE APPLICABLE MUST REMAIN WITHIN DIMENSIONS   | DRAWN BY: VMANICKAM<br>CHECKED BY: CCTEH<br>APPROVED BY: SHLENI<br>MATERIAL NO. | DATE: 2007/07/16<br>DATE: 2007/09/03<br>DATE: 2007/09/03 | TITLE: DDR3 SODIMM<br>204 CKTS. 4.0MM HEIGHT<br>STANDARD ORIENTATION<br>MOLEX INCORPORATED |                        |  |
|  |                    | A3                            |  | SEE TABLE   | DOCUMENT NO. SD-78194-001                                | SHEET NO. 2 OF 5   |                        |  |

RECOMMENDED MATING PCB CONFIGURATION



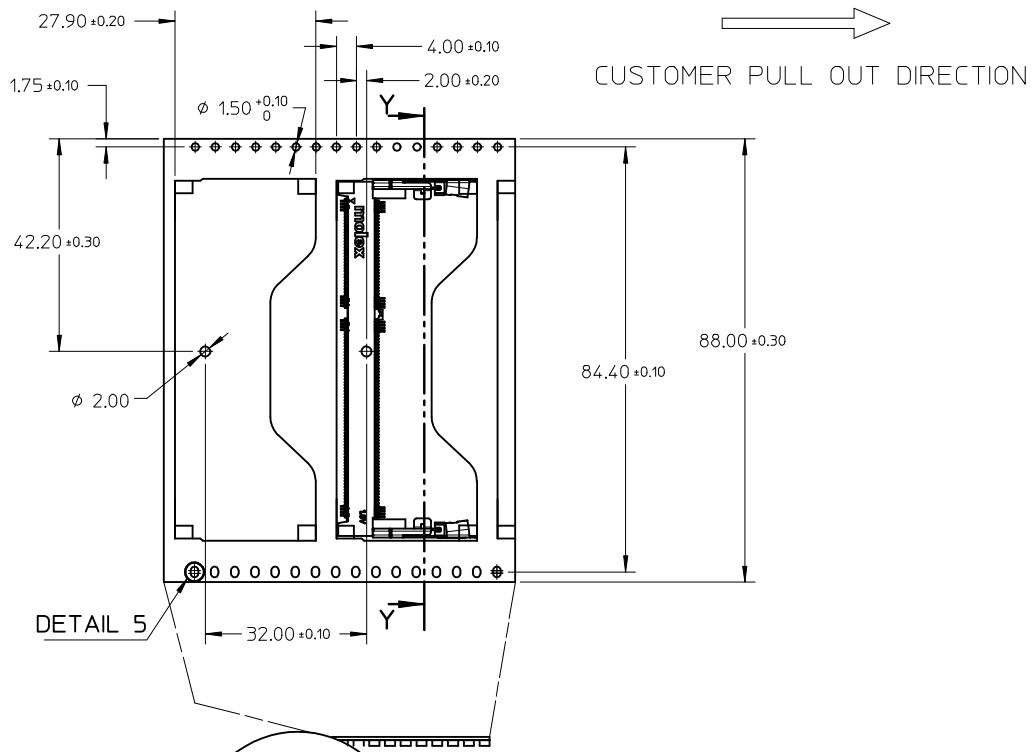
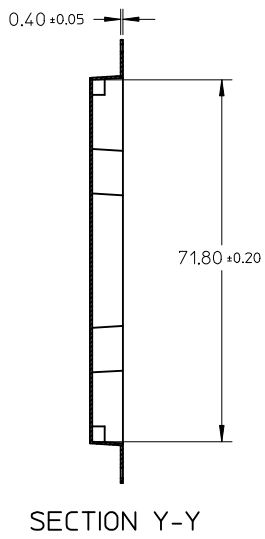
ADD GF DETAILS  
 EC NO: S2010-0162  
 DRWN: TARUNGHAM 2009/09/02  
 CHKD: CGTAN 2009/08/28  
 APPR: SHLENI 2009/09/02

| REV | DESCRIPTION     |
|-----|-----------------|
| 0   | QUALITY SYMBOLS |
| 1   | QUALITY SYMBOLS |

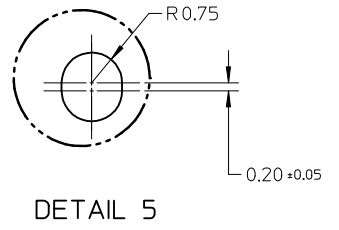
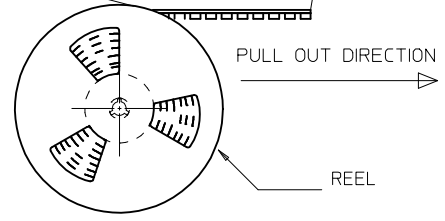
| GENERAL TOLERANCES (UNLESS SPECIFIED)                |             |
|--|-------------|
| mm   | INCH        |
| 4 PLACES   | ± --- ± --- |
| 3 PLACES   | ± --- ± --- |
| 2 PLACES   | ± 0.2 ± --- |
| 1 PLACE  | ± --- ± --- |
| ANGULAR ± 2 °  |             |
| DRAFT WHERE APPLICABLE MUST REMAIN WITHIN DIMENSIONS |             |

| DIMENSION STYLE |            |
|-----------------|------------|
| MM ONLY         |            |
| DRAWN BY        | DATE       |
| VMANICKAM       | 2007/07/16 |
| CHECKED BY      | DATE       |
| CCTEH           | 2007/09/03 |
| APPROVED BY     | DATE       |
| SHLENI          | 2007/09/03 |
| MATERIAL NO.    |            |
| SEE TABLE       |            |
| SIZE            | A3         |

|   |     |              |        |                        |
|---|-----|--------------|--------|------------------------|
| SCALE   | NTS | DESIGN UNITS | METRIC | THIRD ANGLE PROJECTION |
| TITLE   |     |              |        |                        |
| DDR3 SODIMM   |     |              |        |                        |
| 204 CKTS, 4.0MM HEIGHT  |     |              |        |                        |
| STANDARD ORIENTATION  |     |              |        |                        |
| moLEX MOLEX INCORPORATED  |     |              |        |                        |
| DOCUMENT NO.  |     |              |        | SHEET NO.              |
| SD-78194-001  |     |              |        | 3 OF 5                 |
| THIS DRAWING CONTAINS INFORMATION THAT IS PROPRIETARY TO MOLEX INCORPORATED AND SHOULD NOT BE USED WITHOUT WRITTEN PERMISSION |     |              |        |                        |

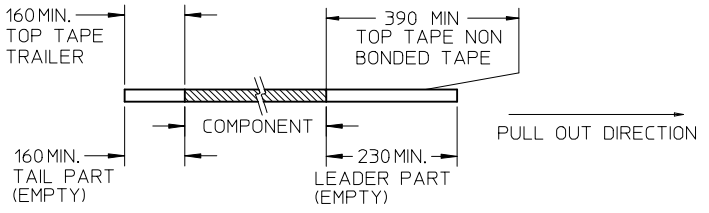


DETAIL 5

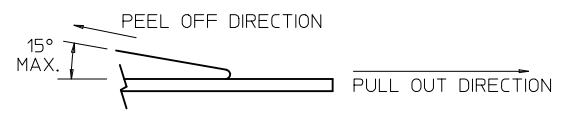


NOTES:

1. LEADER AND TRAILER TAPE



2. PEELING OFF FORCE OF THE TOP TAPE: 10 - 150gf AS PER EIA-481-B. (PEELING DIRECTION AS SHOWN IN FOLLOWING FIGURE)



- 3. TAPE AND REEL SPECIFICATION IS AS PER EIA-481.
- 4. TAPE AND REEL QUANTITY : 250 PCS/ REEL.
- 5. THE TAPE IS TREATED FOR ANTI-STATIC.

|                |                   |            |
|----------------|-------------------|------------|
| ADD GF DETAILS | EC NO: S2010-0162 | 2009/08/28 |
|                | DRWN: TARUNGHAM   | 2009/08/28 |
|                | CHKD: CGTAN       | 2009/09/02 |
|                | APPR: SHLENI      |            |
| REV            | A3                |            |

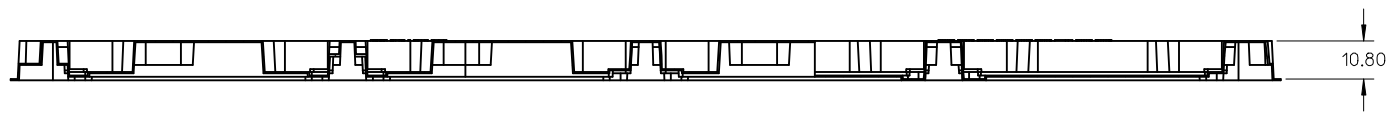
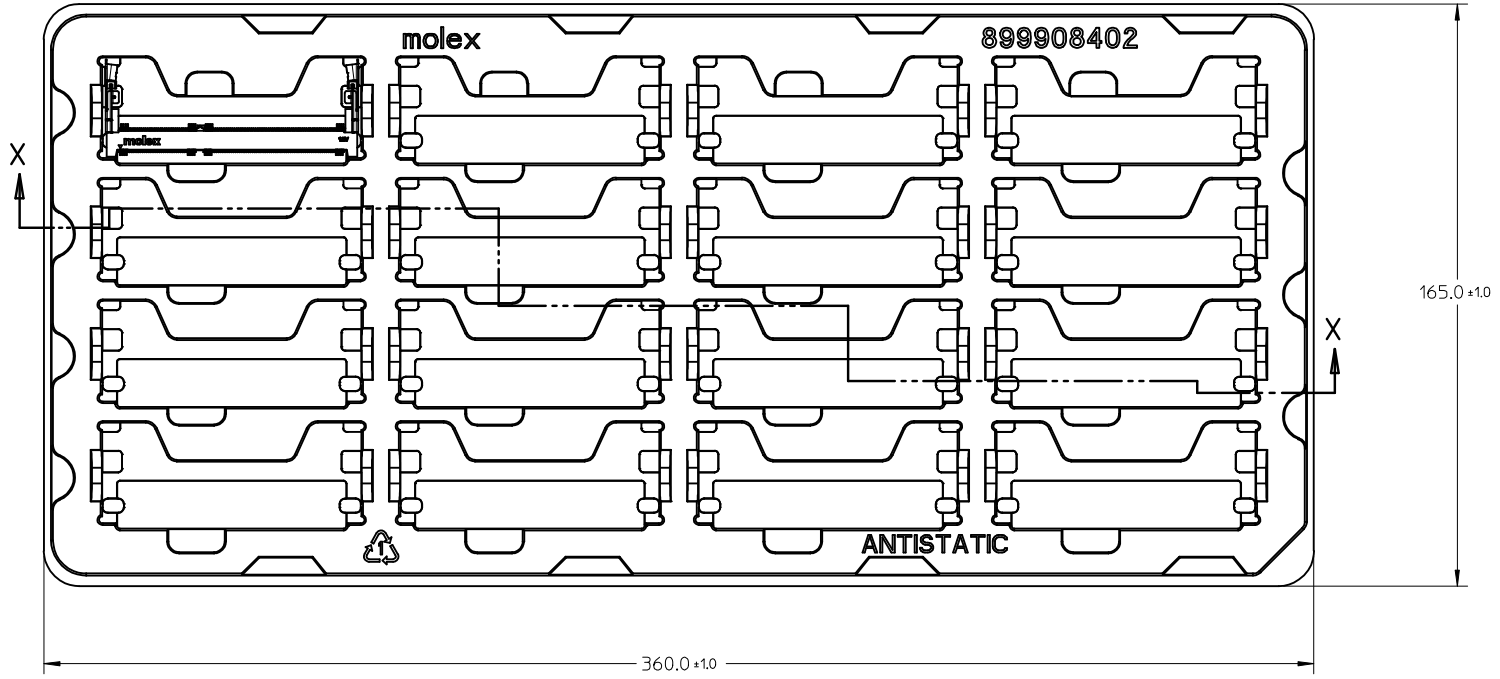
| QUALITY SYMBOLS | DESCRIPTION |
|-----------------|-------------|
| ▽=0             |             |
| ∇=0             |             |

| GENERAL TOLERANCES (UNLESS SPECIFIED)                |             |
|--|-------------|
|  | mm INCH     |
| 4 PLACES   | ± --- ± --- |
| 3 PLACES   | ± --- ± --- |
| 2 PLACES   | ± 0.2 ± --- |
| 1 PLACE  | ± --- ± --- |
| ANGULAR ± 2 °  |             |
| DRAFT WHERE APPLICABLE MUST REMAIN WITHIN DIMENSIONS |             |

| DIMENSION STYLE |            | SCALE   | DESIGN UNITS | THIRD ANGLE PROJECTION |
|-----------------|------------|---|--------------|------------------------|
| MM ONLY         |            | NTS   | METRIC       | ⊙                      |
| DRAWN BY        | DATE       | TITLE   |              |                        |
| VMANICKAM       | 2007/07/16 | DDR3 SODIMM<br>204 CKTS, 4.0MM HEIGHT<br>STANDARD ORIENTATION |              |                        |
| CHECKED BY      | DATE       |   |              |                        |
| CCTEH           | 2007/09/03 | MOLEX INCORPORATED  |              |                        |
| APPROVED BY     | DATE       |   |              |                        |
| SHLENI          | 2007/09/03 | DOCUMENT NO.  |              | SHEET NO.              |
| SEE TABLE       |            | SD-78194-001  |              | 4 OF 5                 |

|              |  |   |  |  |
|--------------|--|---|--|--|
| MATERIAL NO. |  | THIS DRAWING CONTAINS INFORMATION THAT IS PROPRIETARY TO MOLEX INCORPORATED AND SHOULD NOT BE USED WITHOUT WRITTEN PERMISSION |  |  |
|--------------|--|---|--|--|

10 9 8 7 6 5 4 3 2 1



SECTION X-X

- NOTES:  
 1. DRAFT ANGLE OF 3° UNLESS OTHERWISE SPECIFIED  
 2. CAVITY QTY: 4X4=16

| ADD GF DETAILS<br>EC NO: S2010-0162<br>DRWN: TARUMGHAM 2009/08/28<br>CHKD: CGTAN 2009/08/28<br>APPR: SHLENI 2009/09/02 | QUALITY SYMBOLS | GENERAL TOLERANCES (UNLESS SPECIFIED)   | DIMENSION STYLE<br>MM ONLY | SCALE<br>NTS  | DESIGN UNITS<br>METRIC | THIRD ANGLE PROJECTION |       |       |          |       |       |          |       |       |         |       |       |  |          |      |       |           |            |   |       |            |             |      |                    |        |            |  |  |  |
|--|-----------------|---|----------------------------|---|------------------------|------------------------|-------|-------|----------|-------|-------|----------|-------|-------|---------|-------|-------|--|----------|------|-------|-----------|------------|---|-------|------------|-------------|------|--------------------|--------|------------|--|--|--|
|  | ▼=0<br>□=0      | <table border="1"> <thead> <tr> <th></th> <th>mm</th> <th>INCH</th> </tr> </thead> <tbody> <tr> <td>4 PLACES</td> <td>± ---</td> <td>± ---</td> </tr> <tr> <td>3 PLACES</td> <td>± ---</td> <td>± ---</td> </tr> <tr> <td>2 PLACES</td> <td>± 0.2</td> <td>± ---</td> </tr> <tr> <td>1 PLACE</td> <td>± ---</td> <td>± ---</td> </tr> </tbody> </table> |                            | mm  | INCH                   | 4 PLACES               | ± --- | ± --- | 3 PLACES | ± --- | ± --- | 2 PLACES | ± 0.2 | ± --- | 1 PLACE | ± --- | ± --- | <table border="1"> <thead> <tr> <th>DRAWN BY</th> <th>DATE</th> <th>TITLE</th> </tr> </thead> <tbody> <tr> <td>VMANICKAM</td> <td>2007/07/16</td> <td rowspan="2">DDR3 SODIMM<br/>204 CKTS, 4.0MM HEIGHT<br/>STANDARD ORIENTATION</td> </tr> <tr> <td>CCTEH</td> <td>2007/09/03</td> </tr> <tr> <td>APPROVED BY</td> <td>DATE</td> <td rowspan="2">  MOLEX INCORPORATED                 </td> </tr> <tr> <td>SHLENI</td> <td>2007/09/03</td> </tr> </tbody> </table> | DRAWN BY | DATE | TITLE | VMANICKAM | 2007/07/16 | DDR3 SODIMM<br>204 CKTS, 4.0MM HEIGHT<br>STANDARD ORIENTATION | CCTEH | 2007/09/03 | APPROVED BY | DATE | MOLEX INCORPORATED | SHLENI | 2007/09/03 |  |  |  |
|  |                 | mm  | INCH                       |   |                        |                        |       |       |          |       |       |          |       |       |         |       |       |  |          |      |       |           |            |   |       |            |             |      |                    |        |            |  |  |  |
|  | 4 PLACES        | ± ---   | ± ---                      |   |                        |                        |       |       |          |       |       |          |       |       |         |       |       |  |          |      |       |           |            |   |       |            |             |      |                    |        |            |  |  |  |
| 3 PLACES   | ± ---           | ± ---   |                            |   |                        |                        |       |       |          |       |       |          |       |       |         |       |       |  |          |      |       |           |            |   |       |            |             |      |                    |        |            |  |  |  |
| 2 PLACES   | ± 0.2           | ± ---   |                            |   |                        |                        |       |       |          |       |       |          |       |       |         |       |       |  |          |      |       |           |            |   |       |            |             |      |                    |        |            |  |  |  |
| 1 PLACE  | ± ---           | ± ---   |                            |   |                        |                        |       |       |          |       |       |          |       |       |         |       |       |  |          |      |       |           |            |   |       |            |             |      |                    |        |            |  |  |  |
| DRAWN BY   | DATE            | TITLE   |                            |   |                        |                        |       |       |          |       |       |          |       |       |         |       |       |  |          |      |       |           |            |   |       |            |             |      |                    |        |            |  |  |  |
| VMANICKAM  | 2007/07/16      | DDR3 SODIMM<br>204 CKTS, 4.0MM HEIGHT<br>STANDARD ORIENTATION   |                            |   |                        |                        |       |       |          |       |       |          |       |       |         |       |       |  |          |      |       |           |            |   |       |            |             |      |                    |        |            |  |  |  |
| CCTEH  | 2007/09/03      |   |                            |   |                        |                        |       |       |          |       |       |          |       |       |         |       |       |  |          |      |       |           |            |   |       |            |             |      |                    |        |            |  |  |  |
| APPROVED BY  | DATE            | MOLEX INCORPORATED  |                            |   |                        |                        |       |       |          |       |       |          |       |       |         |       |       |  |          |      |       |           |            |   |       |            |             |      |                    |        |            |  |  |  |
| SHLENI   | 2007/09/03      |   |                            |   |                        |                        |       |       |          |       |       |          |       |       |         |       |       |  |          |      |       |           |            |   |       |            |             |      |                    |        |            |  |  |  |
|  | ANGULAR ± 2 °   | DRAFT WHERE APPLICABLE MUST REMAIN WITHIN DIMENSIONS  | MATERIAL NO.<br>SEE TABLE  | DOCUMENT NO.<br>SD-78194-001  | SHEET NO.<br>5 OF 5    |                        |       |       |          |       |       |          |       |       |         |       |       |  |          |      |       |           |            |   |       |            |             |      |                    |        |            |  |  |  |
|  |                 |   | SIZE<br>A3                 | THIS DRAWING CONTAINS INFORMATION THAT IS PROPRIETARY TO MOLEX INCORPORATED AND SHOULD NOT BE USED WITHOUT WRITTEN PERMISSION |                        |                        |       |       |          |       |       |          |       |       |         |       |       |  |          |      |       |           |            |   |       |            |             |      |                    |        |            |  |  |  |

9 8 7 6 5 4 3 2 1