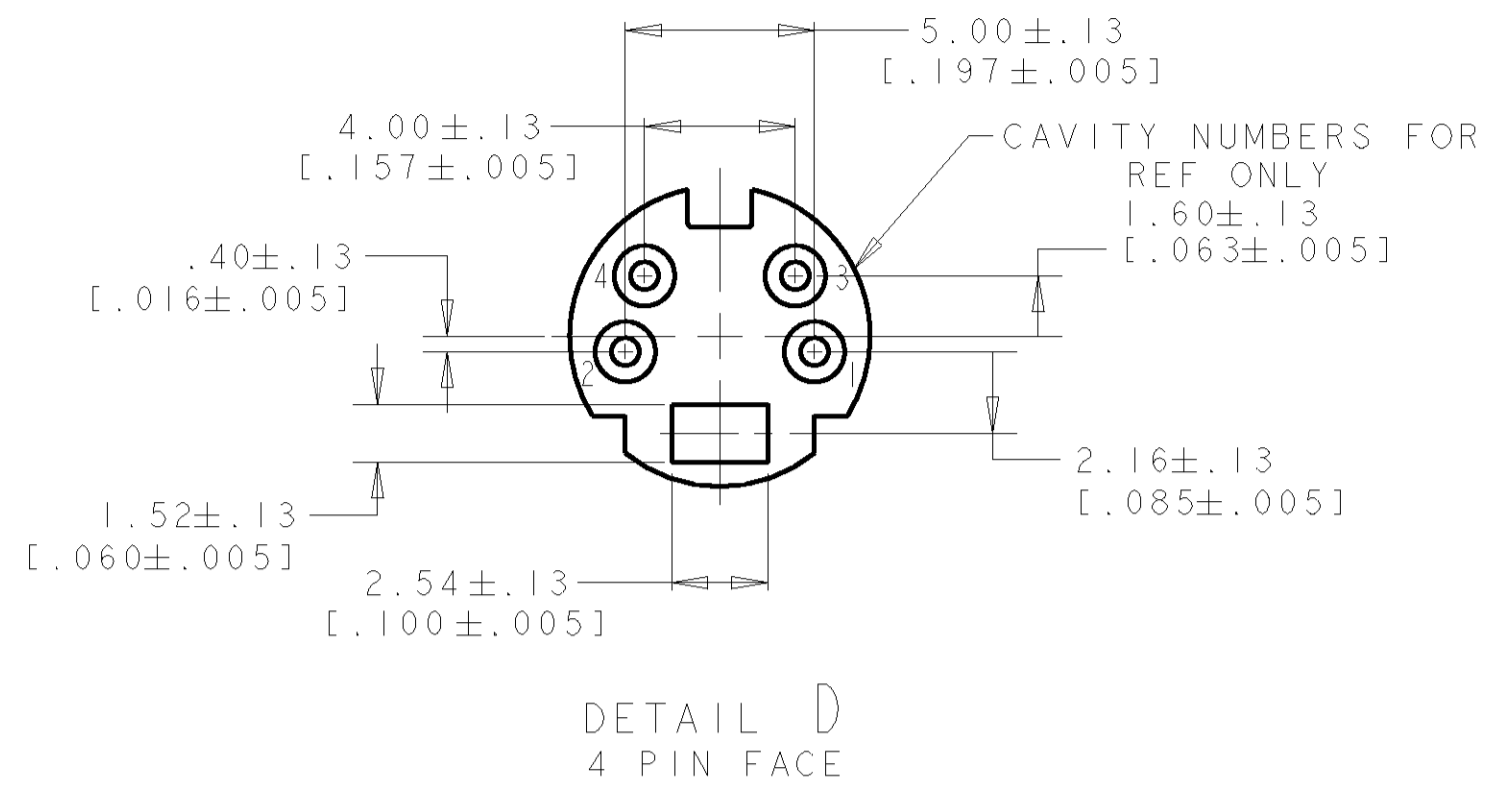
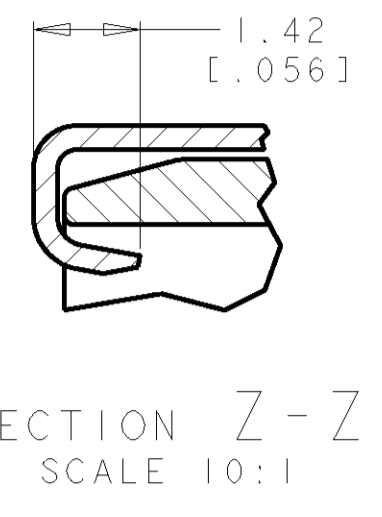
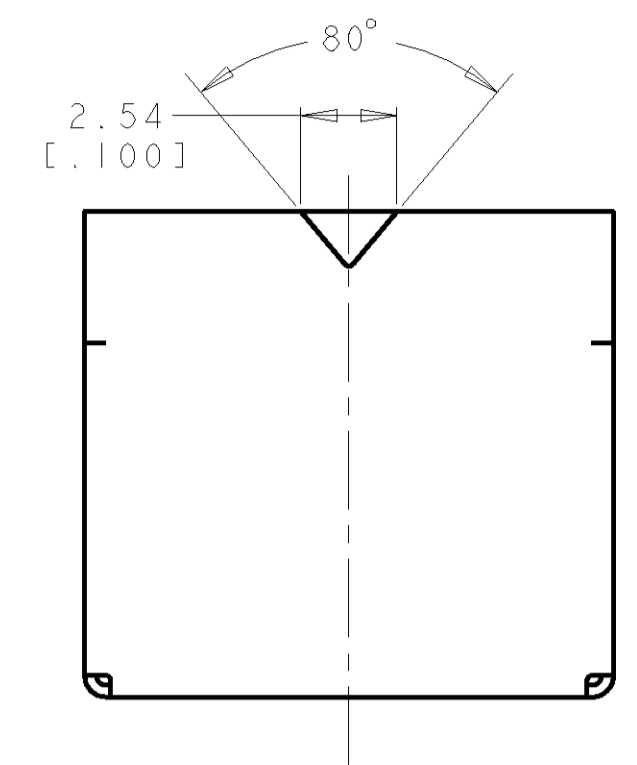
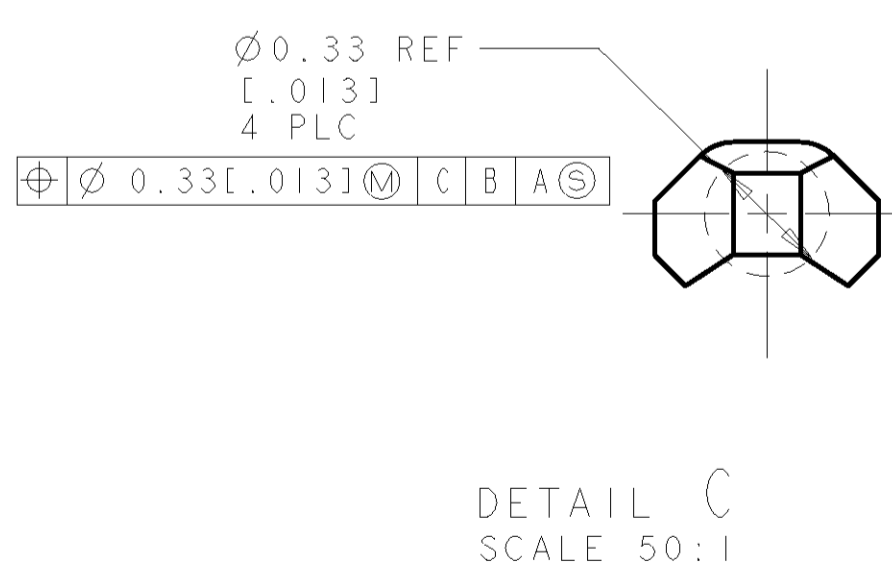
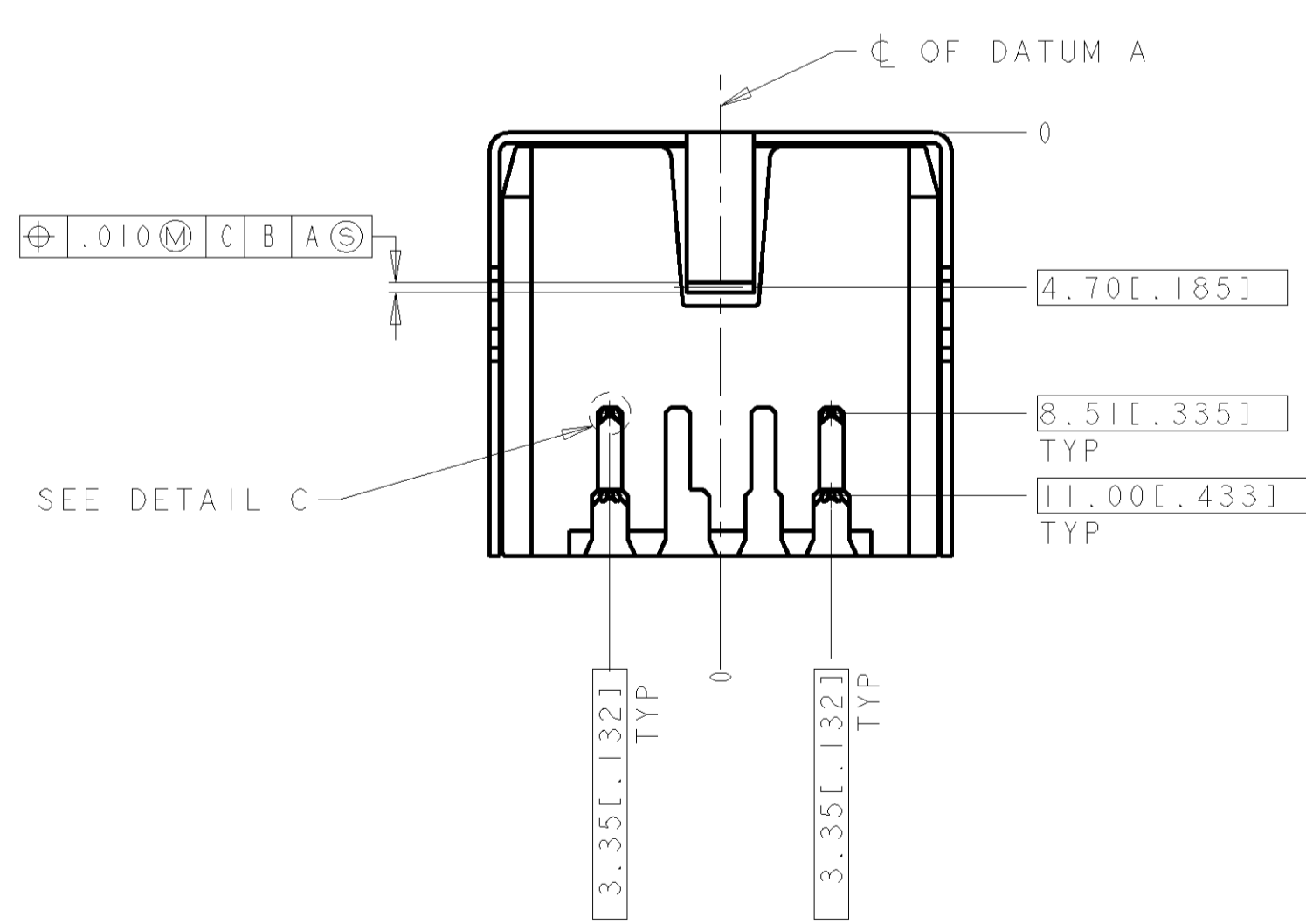
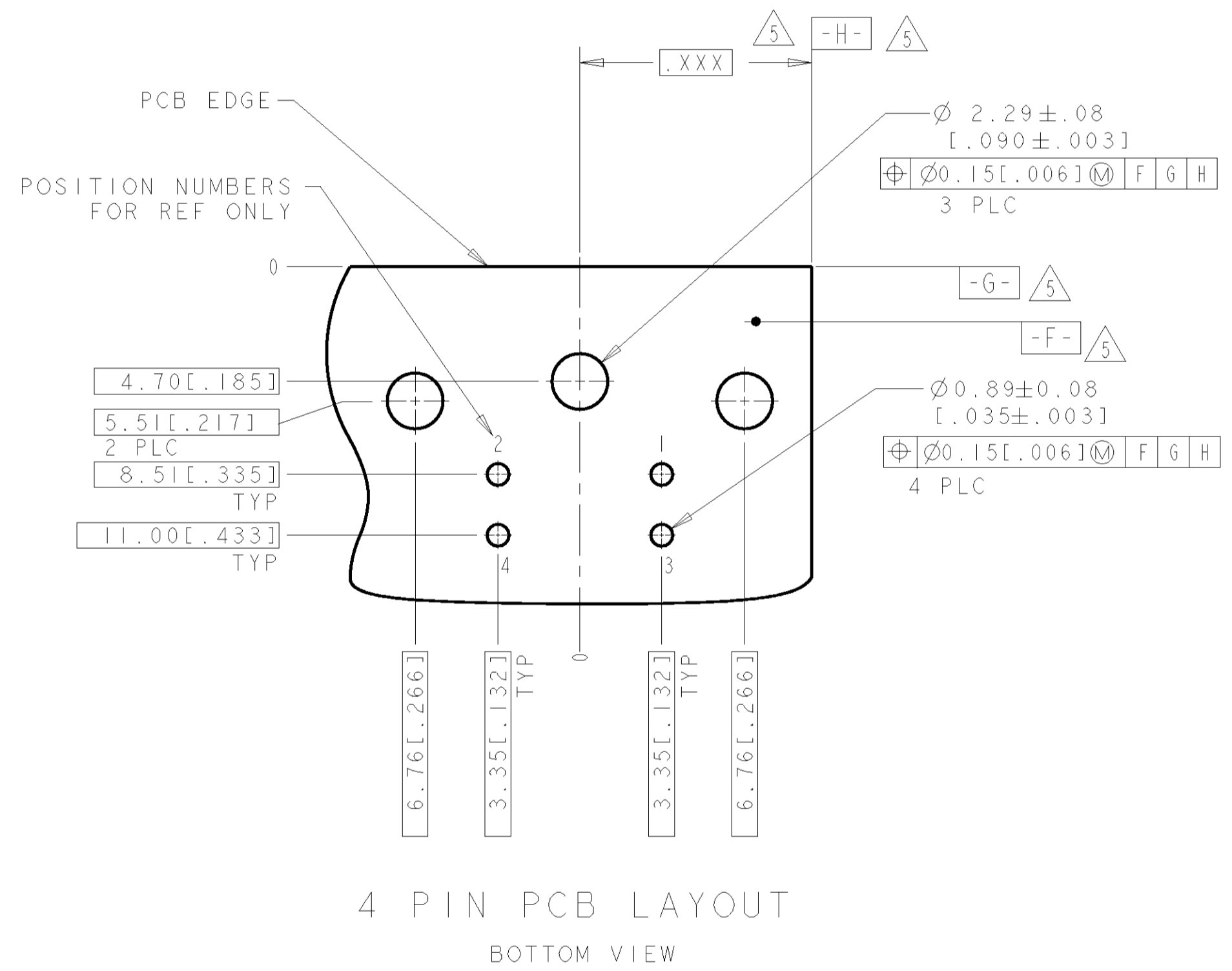
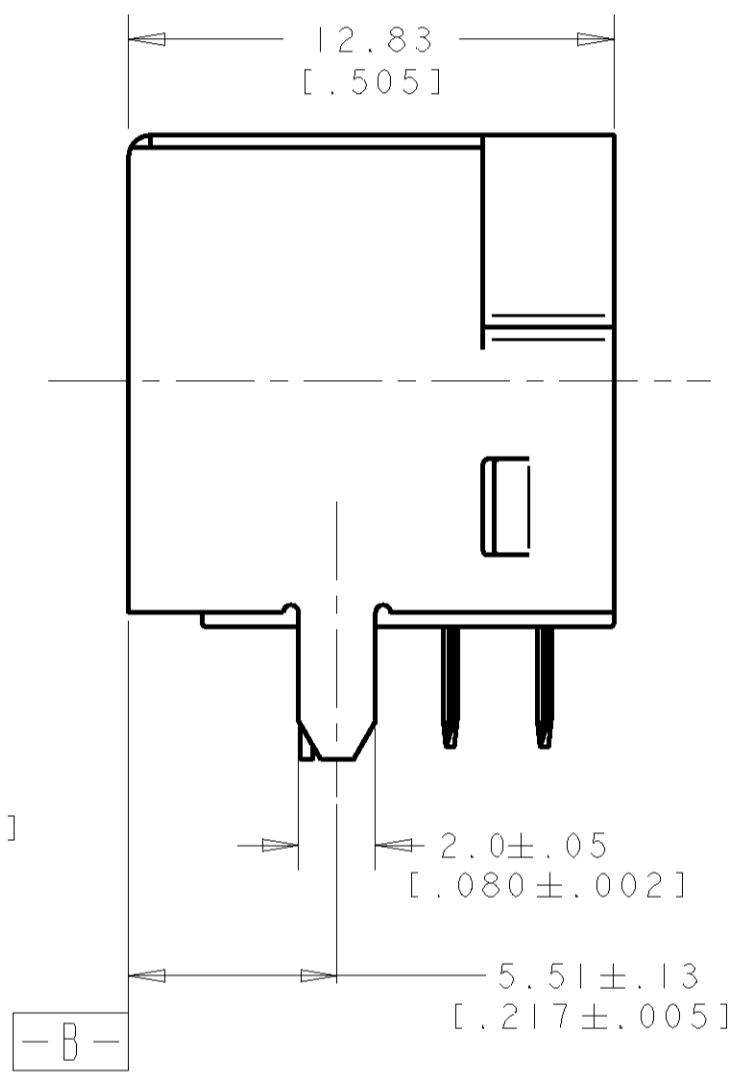
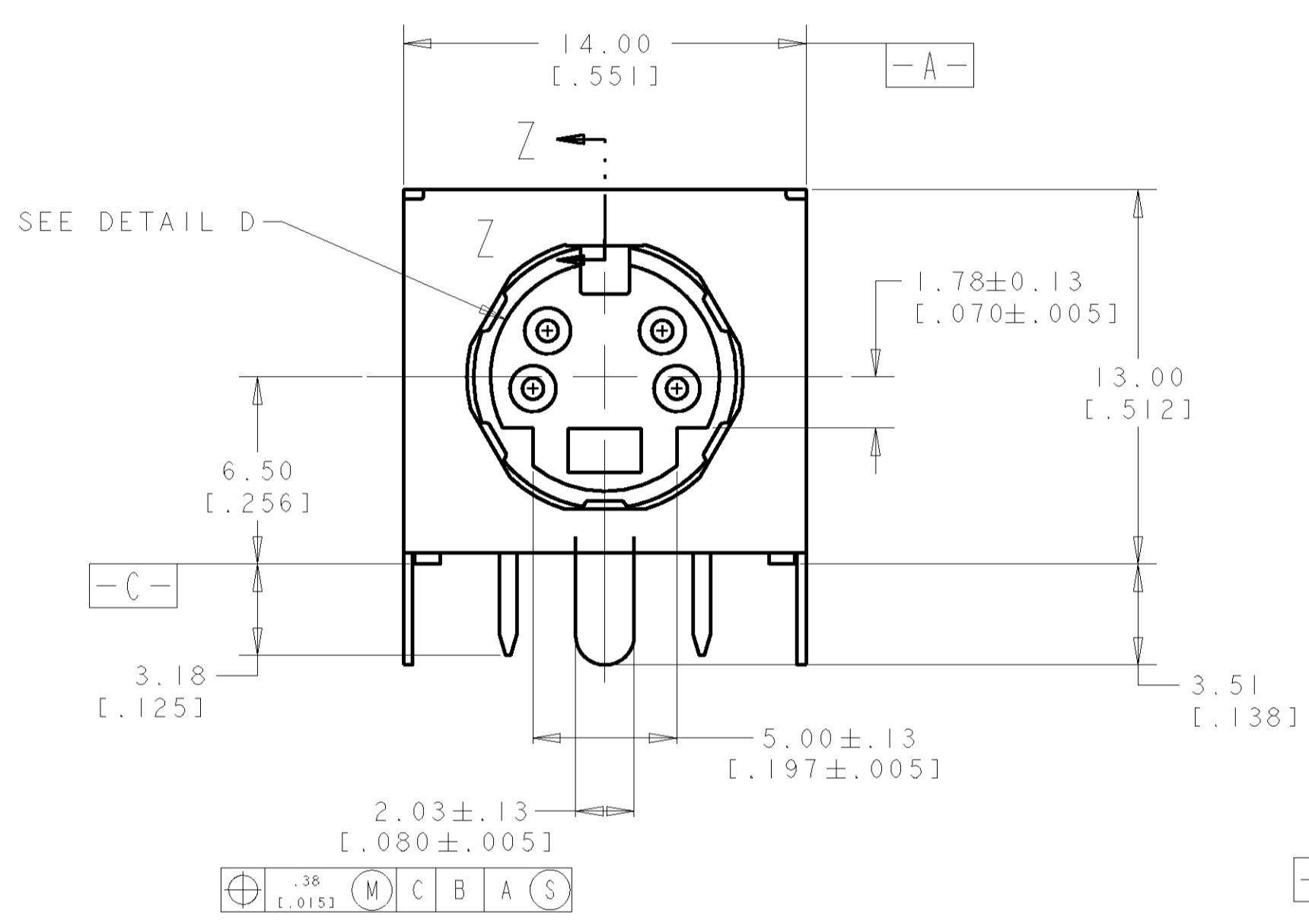


LOC	DIST	REVISIONS			
F	LTR	DESCRIPTION	DATE	DRN	APPR
P		REVISED PER ECO-11-005139	19MAR11	RK	HMR



- 1 RECEPTACLE CONTACTS: COPPER ALLOY.
RECEPTACLE SHIELD: COPPER ALLOY.
HOUSING: THERMOPLASTIC, BLACK, 94V-0 RATED.
- 2 PLATING:
RECEPTACLE CONTACTS - GOLD FLASH PLATED ON MATING END, MATTE-TIN PLATED .0030 MIN [0.000120 MIN] THICK ON SOLDER TAIL ALL OVER
.0013 MIN [0.000050 MIN] THICK NICKEL.
- 3 PLATING:
SHIELD: PRE-TIN PLATED
- 4 RECEPTACLE ASSEMBLY MATES WITH 4 PIN 9.00±.10 [0.354±.004] DIAMETER PLUG.
- 5 DATUMS AND BASIC DIMENSION SUPPLIED BY CUSTOMER.



P/N: 5749263-1 AS SHOWN

DIMENSIONS: mm [INCHES]		TOLERANCES UNLESS OTHERWISE SPECIFIED:		DWG: WYLEE 03JAN2005 CHK: SF LEONG APPD: SF LEONG		NAME: RECEPTACLE ASSY, 4 POS, RIGHT ANGLE, MINIATURE CIRCULAR DIN	
0 PLC	±	0 PLC	±	PRODUCT SPEC	108-1225	SIZE: A1	CAGE CODE: 00779
2 PLC	±	2 PLC	±	APPLICATION SPEC		DRAWING NO: C=5749263	SCALE: 5:1
3 PLC	±	3 PLC	±0.381 [0.015]	WEIGHT		SHEET 1 OF 1	REV P
4 PLC	±	4 PLC	±	CUSTOMER DRAWING			
ANGLES	±	ANGLES	±				
FINISH		FINISH					