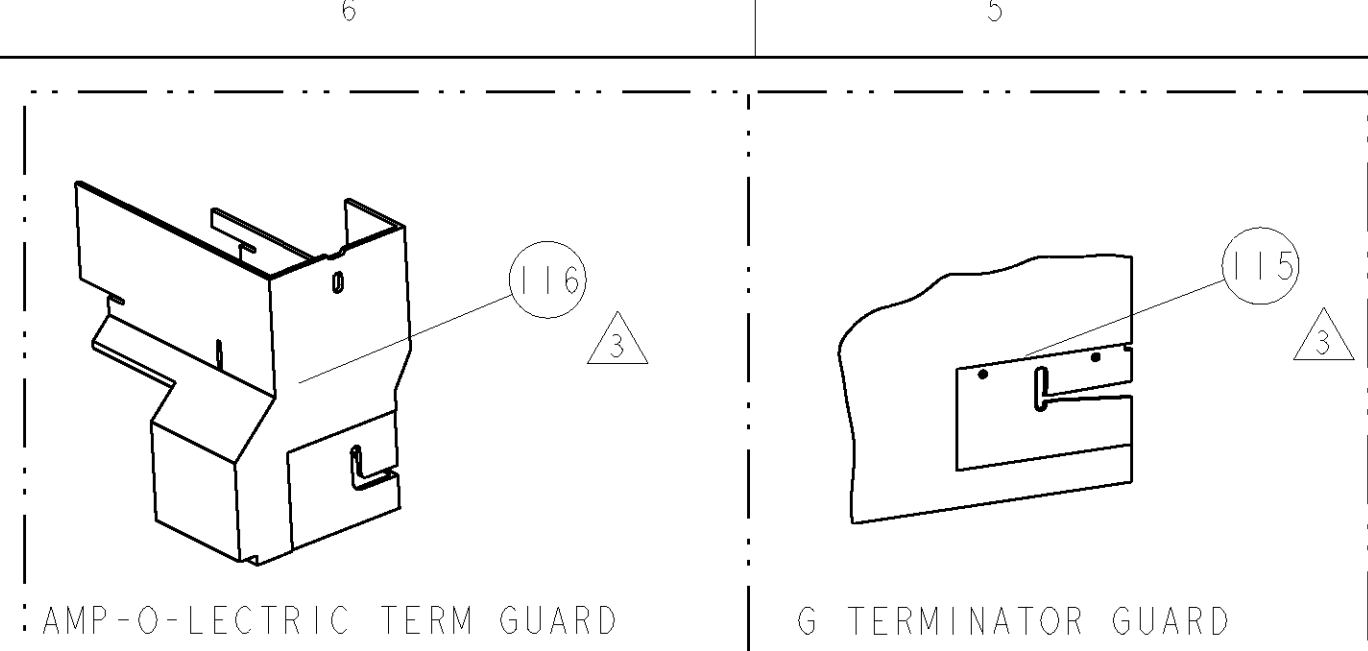


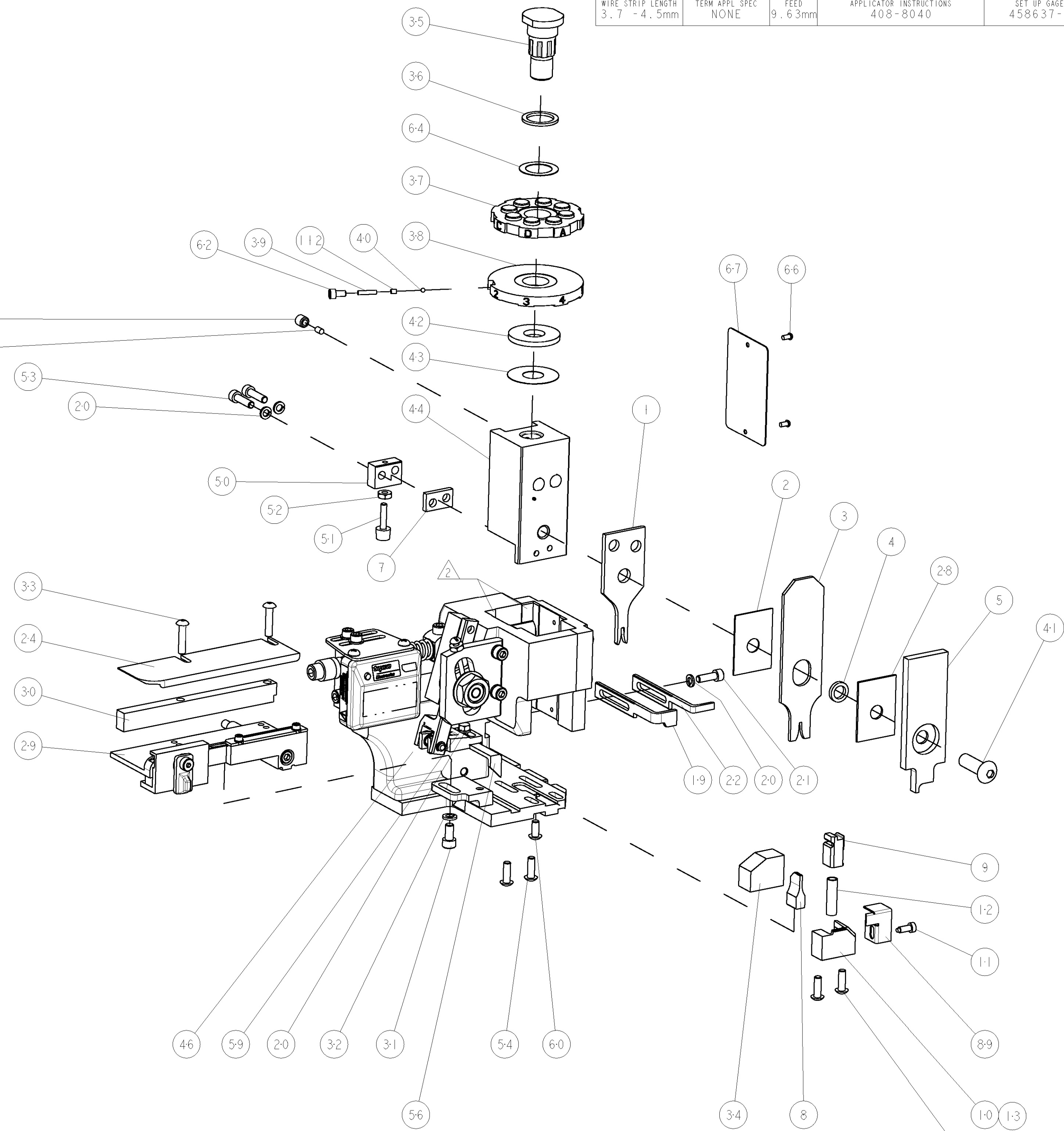
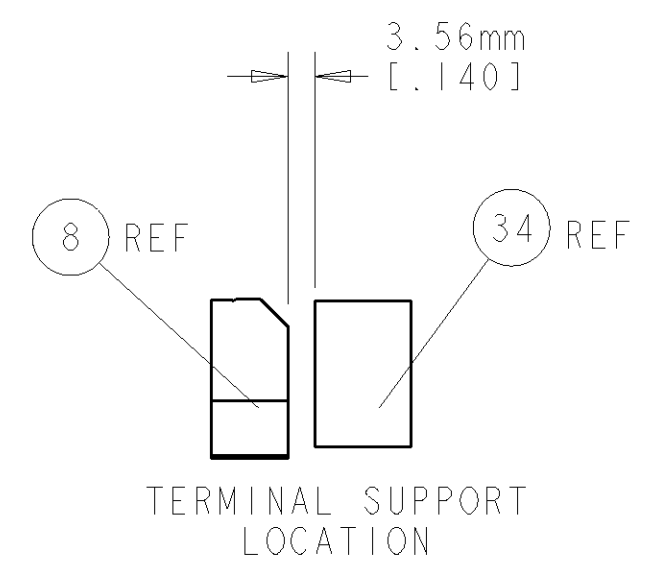
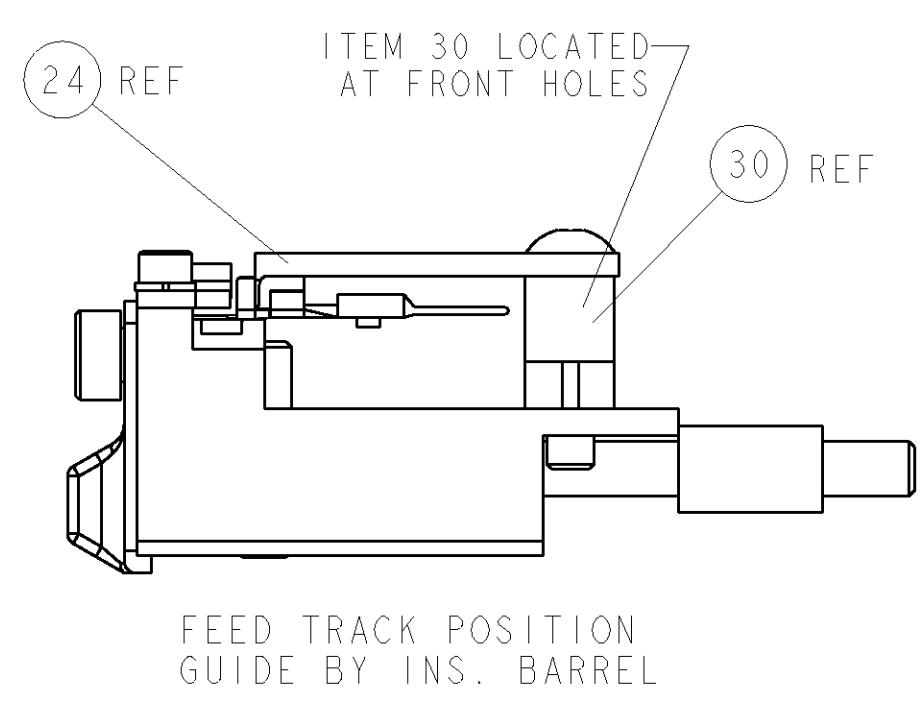
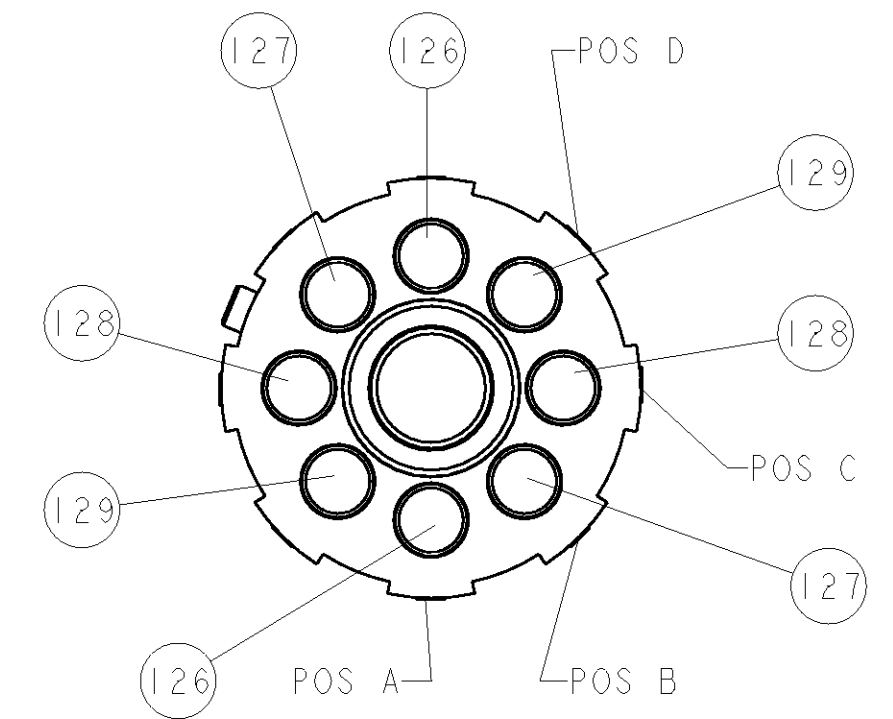
| PART NUMBER | REV | FIRST USED | POWER UNIT    | FEED TYPE | DESCRIPTION        |
|-------------|-----|------------|---------------|-----------|--------------------|
| 1852576-1   | A   | 122500-1   | LEADMAKER     | POST FEED | CUTS CARRIER       |
| 1852576-2   | A   | 565435-5   | BENCH MODEL K | PRE FEED  | CUTS CARRIER       |
| 1852576-3   | A   | 354500-1   | BENCH MODEL G | PRE FEED  | CUTS CARRIER       |
| 1852576-6   | A   | 122500-1   | LEADMAKER     | POST FEED | CONTINUOUS CARRIER |
| 7-1852576-7 | A   | -          | -             | -         | SPARE PARTS        |



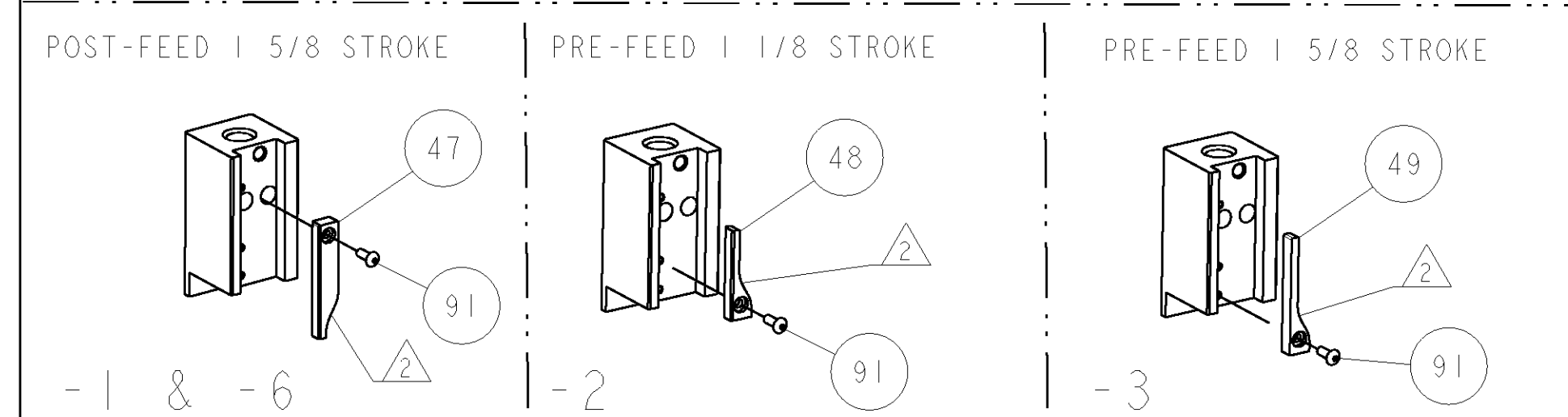
| TE P/N            |                | SUMITOMO P/N | SUMITOMO TERMINAL - TE CRIMP SPECS |                |           |
|-------------------|----------------|--------------|------------------------------------|----------------|-----------|
| 1949532           | 8100-2972      | PAD LTR      | CRIMP HEIGHT                       | WIRE SIZE      |           |
| -                 | -              | A            | 1.22±0.05mm [ .048±.002 ]          | 20AWG (PIN)    |           |
| SOCKET            | -              | B            | 1.14±0.05mm [ .045±.002 ]          | 22AWG (PIN)    |           |
| 1949533           | 8100-2971      | C            | 1.04±0.05mm [ .041±.002 ]          | 20AWG (SOCKET) |           |
| -                 | -              | D            | 0.94±0.05mm [ .037±.002 ]          | 22AWG (SOCKET) |           |
| -                 |                | CRIMP        | SIZE                               | TYPE           | RANGE     |
| -                 | -              | WIRE         | 1.78mm [ .070 ]                    | F              | 22-20 AWG |
| -                 | -              | INSUL        | 1.78mm [ .070 ]                    | F              | ∅1.4-1.8  |
| WIRE STRIP LENGTH | TERM APPL SPEC | FEED         | APPLICATOR INSTRUCTIONS            | SET UP GAGE    |           |
| 3.7 - 4.5mm       | NONE           | 9.63mm       | 408-8040                           | 458637-1       |           |

| LOC | DIST | REV | DESCRIPTION | DATE      | DRN | APPD |
|-----|------|-----|-------------|-----------|-----|------|
| A   | 66   |     | RELEASED    | 17OCT2007 | RK  | TE   |

- △ RECOMMENDED SPARE PARTS
- △ GREASE LIGHTLY
- △ GUARD MUST BE IN PLACE WHEN OPERATING APPLICATOR IN A BENCH MACHINE



|   |   |   |     |   |    |             |                                       |     |
|---|---|---|-----|---|----|-------------|---------------------------------------|-----|
| - | 2 | 2 | 2   | 2 | -  | 4-354779-5  | PIN, WIRE DISC, .3215                 | 129 |
| - | 2 | 2 | 2   | 2 | -  | 3-354779-4  | PIN, WIRE DISC, .3160                 | 128 |
| - | 2 | 2 | 2   | 2 | -  | 2-354779-6  | PIN, WIRE DISC, .3120                 | 127 |
| - | 2 | 2 | 2   | 2 | -  | 1-354779-9  | PIN, WIRE DISC, .3085                 | 126 |
| △ | - | - | REF | - | .. | 455749-1    | GUARD WINDOW                          | 116 |
| △ | - | - | REF | - | .. | 679532-1    | INSERT, GUARD                         | 115 |
| - | 1 | 1 | 1   | 1 | -  | 690603-1    | SPRING ASSIST AMP-O-MATOR APPLICATOR  | 112 |
| - | 1 | 1 | 1   | 1 | -  | 1-21002-7   | SCR, BTN SKT HD CAP 6-32 X .375       | 91  |
| - | 1 | 1 | 1   | 1 | -  | 318563-1    | GUARD, FRONT CHIP                     | 89  |
| - | 1 | 1 | 1   | 1 | -  | 4088040     | SF APPL INST 408-8040                 | 72  |
| - | 1 | 1 | 1   | 1 | -  | 217238-1    | GENERAL INSTRUCTION PKG               | 71  |
| - | 1 | 1 | 1   | 1 | -  | 461264-1    | PLATE, IDENTIFICATION                 | 67  |
| - | 2 | 2 | 2   | 2 | -  | 21017-2     | SCREW, DRIVE                          | 66  |
| - | 1 | 1 | 1   | 1 | -  | 986950-1    | WASHER, FLAT PRECISION                | 64  |
| - | 1 | 1 | 1   | 1 | -  | 21009-2     | SCR, SET, SELF LOCKING 1/4-20 X .250  | 63  |
| - | 1 | 1 | 1   | 1 | -  | 23030-1     | SCR, SKT HD CAP 6-32 X .25            | 62  |
| - | 1 | 1 | 1   | 1 | -  | 22733-8     | SCR, BHSC, SELF-LOCKING, 8-32 X .375  | 60  |
| - | 1 | 1 | 1   | 1 | -  | 2-22603-0   | SCR, HEX HD CAP 8-32 X .312           | 59  |
| - | 1 | 1 | 1   | 1 | -  | 458537-2    | PAWL, FEED                            | 56  |
| - | 4 | 4 | 4   | 4 | -  | 2-21002-2   | SCR, BTN SKT HD CAP 8-32 X .500       | 54  |
| - | 2 | 2 | 2   | 2 | -  | 2-21000-8   | SCR, SKT HD CAP 8-32 X .625           | 53  |
| - | 1 | 1 | 1   | 1 | -  | 21018-5     | NUT, HEX, REG 6-32                    | 52  |
| - | 1 | 1 | 1   | 1 | -  | 811242-2    | BUMPER, HOLD DOWN                     | 51  |
| - | 1 | 1 | 1   | 1 | -  | 690753-1    | SPACER, TONKER                        | 50  |
| - | - | - | -   | - | .. | 690602-6    | CAM, PRE FEED, 1 5/8                  | 49  |
| - | - | - | -   | - | .. | 690602-5    | CAM, PRE FEED, 1 1/8                  | 48  |
| - | 1 | - | -   | - | -  | 690501-4    | CAM, POST FEED, 1 5/8                 | 47  |
| - | 1 | 1 | 1   | 1 | -  | 459456-1    | APPL. BASIC SUB ASSY (SIDE WISE MOCA) | 46  |
| - | 1 | 1 | 1   | 1 | -  | 690191-1    | PLUG, NYLON                           | 45  |
| - | 1 | 1 | 1   | 1 | -  | 455673-1    | RAM, SIDE FEED                        | 44  |
| - | 1 | 1 | 1   | 1 | -  | 690125-1    | SHIM SUB-ASSY                         | 43  |
| - | 1 | 1 | 1   | 1 | -  | 1-690124-4  | WASHER, RAM (.120)                    | 42  |
| - | 1 | 1 | 1   | 1 | -  | 7-21002-9   | SCR, BTN SKT HD CAP 5/16-24 X 1.00    | 41  |
| - | 1 | 1 | 1   | 1 | -  | 23241-6     | BALL, STEEL                           | 40  |
| - | 1 | 1 | 1   | 1 | -  | 690170-1    | SPRING, COMPRESSION                   | 39  |
| - | 1 | 1 | 1   | 1 | -  | 690142-1    | DISC, INSULATION                      | 38  |
| - | 1 | 1 | 1   | 1 | -  | 354777-1    | WIRE DISC, ASSEMBLY                   | 37  |
| - | 1 | 1 | 1   | 1 | -  | 22480-5     | SPRING, COMPRESSION                   | 36  |
| - | 1 | 1 | 1   | 1 | -  | 690212-1    | POST, RAM                             | 35  |
| - | 1 | 1 | 1   | 1 | -  | 690786-3    | TERMINAL SUPPORT                      | 34  |
| - | 2 | 2 | 2   | 2 | -  | 2-21002-4   | SCR, BTN SKT HD CAP 8-32 X .750       | 33  |
| - | 1 | 1 | 1   | 1 | -  | 21024-5     | WASHER, SPRG LOCK, REG NO 10          | 32  |
| - | 1 | 1 | 1   | 1 | -  | 3-21000-4   | SCR, SKT HD CAP 10-32 X .375          | 31  |
| - | 1 | 1 | 1   | 1 | -  | 1-1320908-7 | SPACER, STRIP GUIDE                   | 30  |
| - | 1 | 1 | 1   | 1 | -  | 1633091-1   | ASSEMBLY, STRIP GUIDE                 | 29  |
| - | 1 | 1 | 1   | 1 | -  | 1-455888-0  | SPACER, CRIMPER                       | 28  |
| - | 1 | 1 | 1   | 1 | -  | 1320928-1   | PLATE, STRIP GUIDE                    | 24  |
| - | 1 | 1 | 1   | 1 | -  | 690472-2    | STRIPPER                              | 22  |
| - | 1 | 1 | 1   | 1 | -  | 2-21000-7   | SCR, SKT HD CAP 8-32 X .500           | 21  |
| - | 4 | 4 | 4   | 4 | -  | 21024-4     | WASHER, SPRG LOCK, REG NO 8           | 20  |
| - | - | - | -   | - | -  | 691353-1    | STRIPPER                              | 19  |
| △ | - | - | -   | - | -  | 679625-1    | SHEAR HOLDER, FRONT (NO CUT)          | 13  |
| △ | - | - | -   | - | -  | 3-22280-3   | SPRING, COMPRESSION                   | 12  |
| △ | - | - | -   | - | -  | 690461-1    | STOP, SHEAR                           | 11  |
| △ | - | - | -   | - | -  | 690459-1    | SHEAR HOLDER, FRONT                   | 10  |
| △ | - | - | -   | - | -  | 454276-1    | FLOATING SHEAR, FRONT                 | 9   |
| △ | 1 | 1 | 1   | 1 | 1  | 2-1633108-8 | ANVIL, COMBINATION .070               | 8   |
| - | 1 | 1 | 1   | 1 | 1  | 240641-5    | SPACER                                | 7   |
| - | - | - | -   | - | .. | -           | -                                     | 6   |
| - | 1 | 1 | 1   | 1 | 1  | 1-455889-4  | DEPRESSOR, SHEAR                      | 5   |
| - | 1 | 1 | 1   | 1 | 1  | 238011-8    | BLOCK, CRIMPER SPACER                 | 4   |
| △ | 1 | 1 | 1   | 1 | 1  | 9-456134-0  | CRIMPER, INSULATION F PREMIUM         | 3   |
| △ | 1 | 1 | 1   | 1 | 1  | 455888-6    | SPACER, CRIMPER                       | 2   |
| △ | 1 | 1 | 1   | 1 | 1  | 3-456404-5  | CRIMPER, WIRE PREMIUM                 | 1   |



| DIMENSIONS: |             | TOLERANCES UNLESS OTHERWISE SPECIFIED: |                  |
|-------------|-------------|--|------------------|
| INCHES      | 0 PLC ±.01  | 1 PLC ±.01                             | 2 PLC ±.01       |
|             | 3 PLC ±.001 | 4 PLC ±.001                            | ANGLES ±.001     |
| MATERIAL    | FINISH      | WEIGHT                                 | CUSTOMER DRAWING |
| -           | -           | -                                      | -                |