

4

3

2

1

THIS DRAWING IS UNPUBLISHED.

RELEASED FOR PUBLICATION

© COPYRIGHT

ALL RIGHTS RESERVED.

LOC DIST

REVISIONS

P	LTR	DESCRIPTION	DATE	DWN	APVD
	A1	ECR-13-000756	15JAN2013	XZ	SX

REPLACED BY OCEAN STYLE APPLICATOR PART NUMBER 2150003-6

FOR REPLACEMENT PARTS FOR APPLICATOR 1911042 REFER TO ADDITIONAL PAGE(S). SPARE PARTS KIT (IF LISTED) WILL REMAIN AVAILABLE.

THE REPLACEMENT OCEAN STYLE APPLICATOR HAS THE SAME TERMINATOR/PRESS INTERFACE AS APPLICATOR 1911042

Dimensioning and tolerancing per ASME Y14.5M-2009


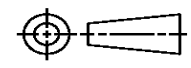
B

A

Dimensioning and tolerancing per ASME Y14.5M-2009

B

A

THIS DRAWING IS A CONTROLLED DOCUMENT.		DWN X. ZHAO	 TE Connectivity	
DIMENSIONS:		CHK S. XI		
		APVD S. XI	NAME	
TOLERANCES UNLESS OTHERWISE SPECIFIED:		PRODUCT SPEC	END FEED SYSTEM III APPLICATOR	
0 PLC ±		APPLICATION SPEC	SIZE	CAGE CODE
1 PLC ±			A3	
2 PLC ±			DRAWING NO	RESTRICTED TO
3 PLC ±			©- 1911042	
4 PLC ±				
ANGLES ±			SCALE	SHEET 1 OF 2
MATERIAL		WEIGHT		REV A1
FINISH				

Dimensioning and tolerancing per ASME Y14.5M-2009

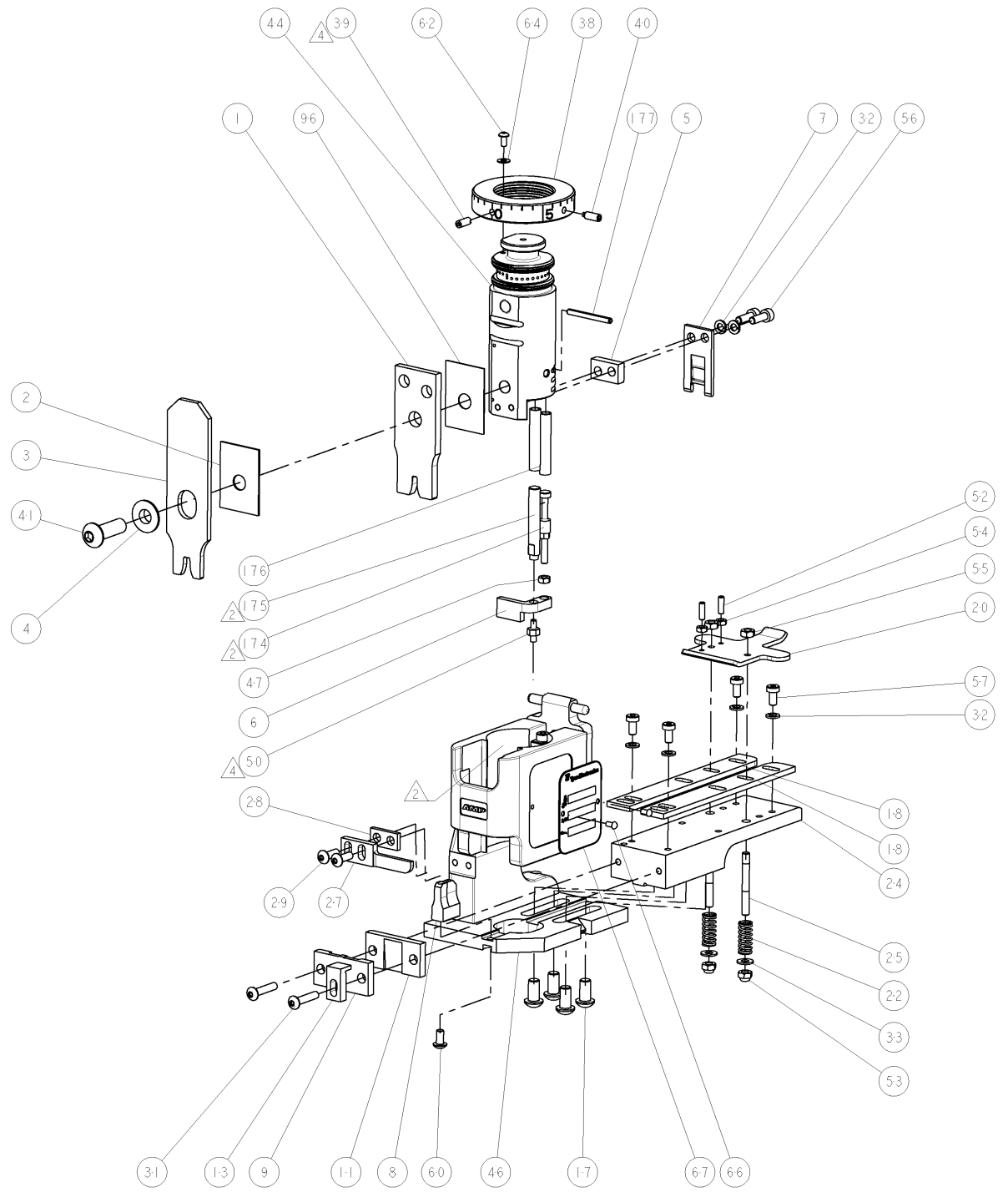
8		7		6		5		4		3		2		1	
THIS DRAWING IS UNPUBLISHED. RELEASED FOR PUBLICATION 20															
COPYRIGHT © BY TYCO ELECTRONICS CORPORATION. ALL RIGHTS RESERVED.															
PART NUMBER	REV	DESCRIPTION	PROGRAMMED MEMORY CHIP												
1911042-1	A	S3A APPLICATOR	8-1911042-1												
7-1911042-1	A	-1 AND SPARE PARTS	9-1911042-1												
7-1911042-7	A	SPARE PARTS KIT													

FEED FINGER 1901697-1	SET UP GAGE 1901068-1	LOC A	DIST 66	REVISONS				
				REV	DESCRIPTION	DATE	BY	APPV
				A	RELEASED	31OCT2007	DWW	GB

APPLICATOR DATA		
CRIMP	SIZE	TYPE
WIRE	3.05 [.120 IN]	F
INSUL	4.57 [.180 IN]	F
APPL INSTRUCTIONS 408-10136		

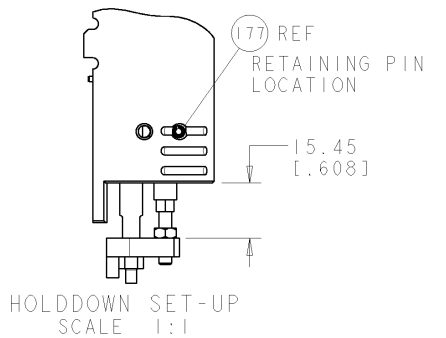
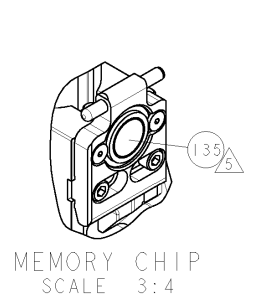
TERMINAL DATA: TE TERMINAL		TYCO ELECTRONICS CRIMP SPEC	
TERMINAL NAME: .250 SERIES FASTON RECEPTACLE			
WIRE STRIP LENGTH 6.00-6.80mm [.236-.267 IN]		INSULATION DIAMETER RANGE 3.05-4.32mm [.120-.170 IN]	
TERMINAL APPL SPEC	114-2036 (A)	-	-
	114-35000 (B)	-	-
TERMINALS APPLIED			
41274 (A)	41274-1 (A)	41274-2 (A)	41274-3 (A)
41202 (A)	41202-1 (A)	61107-1 (B)	61107-3 (B)
63500-1 (A)	63537-1 (A)	63655-1 (A)	63993-1 (A)
153377-1 (A)	153377-2 (A)	1217917-1 (A)	1217917-2 (A)

WIRE SIZE	CRIMP HEIGHT
14AWG	1.91±.05 [.075±.002]
16AWG	1.68±.05 [.066±.002]
18AWG	1.55±.05 [.061±.002]



-	1	1	1-993111-6	PIN, SLOTTED SPRING 3.0 X 30.0	177
-	2	2	3-22280-7	SPRING, COMPRESSION	176
-	1	1	1752353-1	GUIDE PIN, HOLDDOWN	175
-	1	1	1901680-1	GUIDE PIN, HOLDDOWN	174
REF	REF	REF	SEE TABLE	MEMORY CHIP, PROGRAMMED	135
-	1	1	455888-4	SPACER, CRIMPER	96
-	1	1	1633565-2	DOCUMENTATION PACKAGE	71
-	1	1	1901048-1	TAG, IDENTIFICATION	67
-	2	2	21017-2	SCREW, DRIVE	66
-	1	1	18028-1	WASHER, FLAT, REG M3	64
-	1	1	1655785-9	SCR, BTN SKT HD CAP (M3 X 6)	62
-	1	1	1655785-1	SCR, BTN SKT HD CAP (M4 X 8)	60
-	4	4	1655783-2	SCR, CAP, SOC HD, LOW HEAD, M4 X 8	57
-	2	2	2-1655316-0	SCR, SKT HD CAP, M4 X 12.0	56
-	2	2	18030-2	NUT, HEX, REG M4	55
-	2	2	18030-1	NUT, HEX, REG M3	54
-	2	2	986965-1	NUT, LOCK, HEX, TORQUE (M4)	53
-	2	2	2-18032-2	SCR, SET, FLT POINT M3 X 10.0	52
-	1	1	1-1976055-4	STANDOFF, HOLD-DOWN	50
-	1	1	1-18030-0	NUT, HEX, REG M3.5	47
-	1	1	1752320-1	EF SYSTEM III APPLICATOR	46
-	1	1	1752308-1	RAM	44
-	1	1	2-1655785-3	SCR, BTN SKT HD CAP (M8 X 25)	41
-	1	1	993002-4	SCREW, SET, SFT TIP	40
-	1	1	1962043-1	PLUNGER, BALL, METRIC	39
-	1	1	1752309-2	RING, INSULATION CRIMP	38
-	2	2	18028-2	WASHER, FLAT, REG M4	33
-	6	6	18026-2	WASHER, SPRG LOCK, REG M4	32
-	2	2	3-1655785-3	SCR, BTN SKT HD CAP (M4 X 20)	31
-	2	2	1655785-2	SCR, BTN SKT HD CAP (M4 X 12)	29
-	1	1	1-690451-8	SPACER, STRIPPER	28
-	1	1	240639-1	STRIPPER (MACHINING)	27
-	2	2	1320906-1	STUD, THREADED	25
-	1	1	1752371-1	PLATE, STRIP GUIDE	24
-	2	2	22281-7	SPRING, DRAG	22
-	1	1	1752373-1	DRAG	20
-	2	2	1901259-6	GUIDE, LOWER STRIP	18
-	4	4	1655785-5	SCR, BTN SKT HD CAP (M6 X 12)	17
△	1	1	1752360-1	SPACER, HOLD-DOWN	13
△	1	1	240644-1	PLATE, REAR SHEAR	11
△	1	1	3-690495-6	PLATE, FRONT SHEAR	9
△	1	2	1338673-2	ANVIL, COMBINATION	8
△	1	1	1-690474-7	BLADE, SLUG	7
△	1	1	1901681-5	HOLDDOWN, TERMINAL	6
△	1	1	7-240641-1	SPACER	5
△	1	1	238009-1	BLOCK, FL CRIMPER SPACER	4
△	1	2	4-456134-6	CRIMPER, INSULATION F PREMIUM	3
△	1	1	455888-7	SPACER, CRIMPER	2
△	1	2	1-456409-5	CRIMPER, WIRE .120 "F" PREMIUM	1
-	77	71	-1	PART NO	ITEM NO

- △ RECOMMENDED SPARE PARTS.
- △ GREASE BEARING SURFACES LIGHTLY.
- 3. LUBRICATE DAILY PER THE APPLICATOR INSTRUCTION SHEET SUPPLIED WITH THE APPLICATOR.
- △ APPLY P/N 1-23419-5 LOCTITE® TO THREADS.
- △ APPLICATOR SPECIFIC DATA TO BE ENTERED INTO BLANK MEMORY CHIP AT ASSEMBLY.



DIMENSIONS (mm [INCHES])		TOLERANCES (UNLESS OTHERWISE SPECIFIED):		DRAWN: D. WRIGHT		29OCT2007		Tyco Electronics	
0 PLC	± .1	1 PLC	± .05	2 PLC	± .02	3 PLC	± .005	4 PLC	± .0005
MATERIAL:				FINISH:		WEIGHT:		SCALE: 3:5 SHEET 1 OF 1 REV A	
CUSTOMER DRAWING				CUSTOMER DRAWING		CUSTOMER DRAWING		CUSTOMER DRAWING	