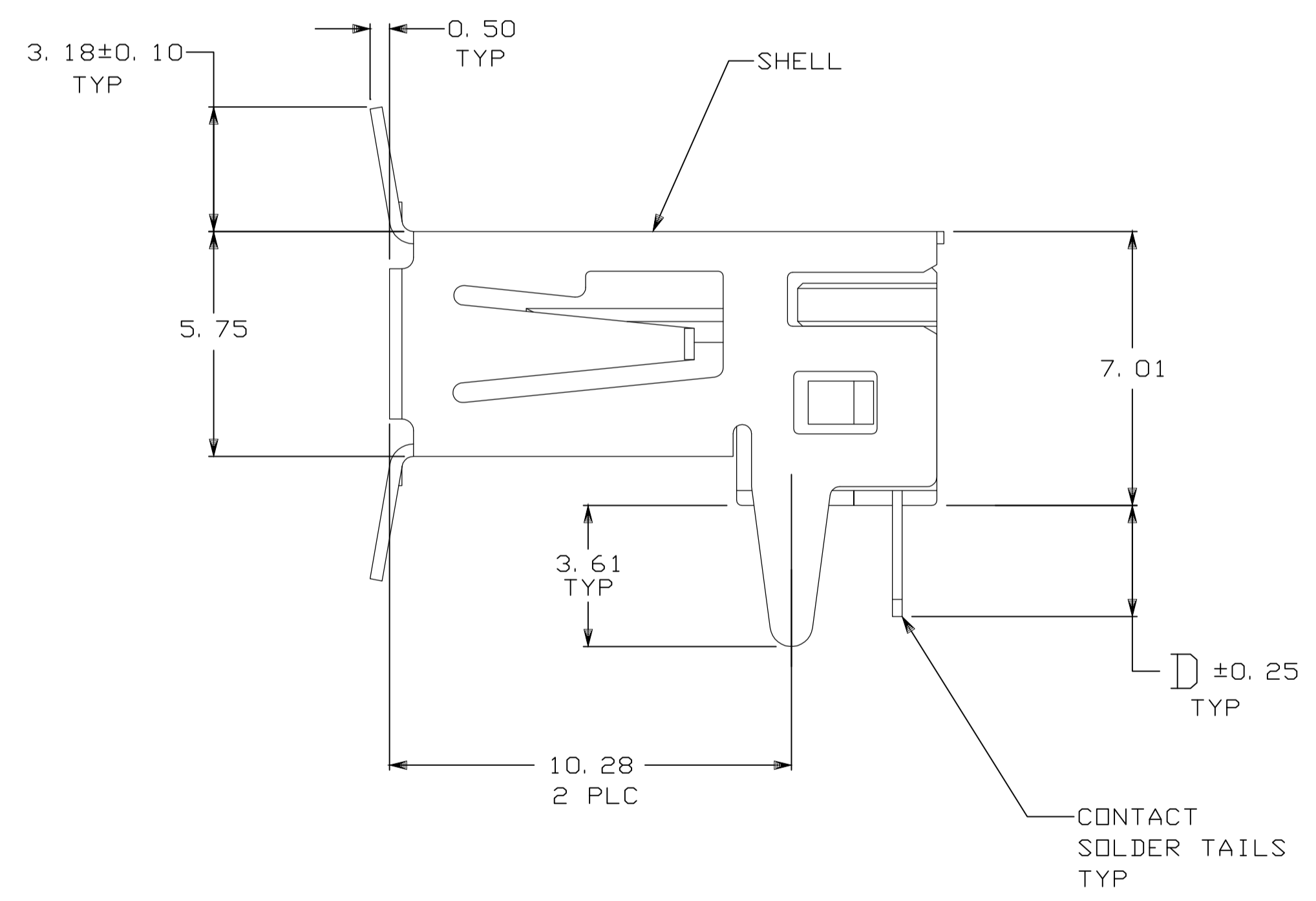
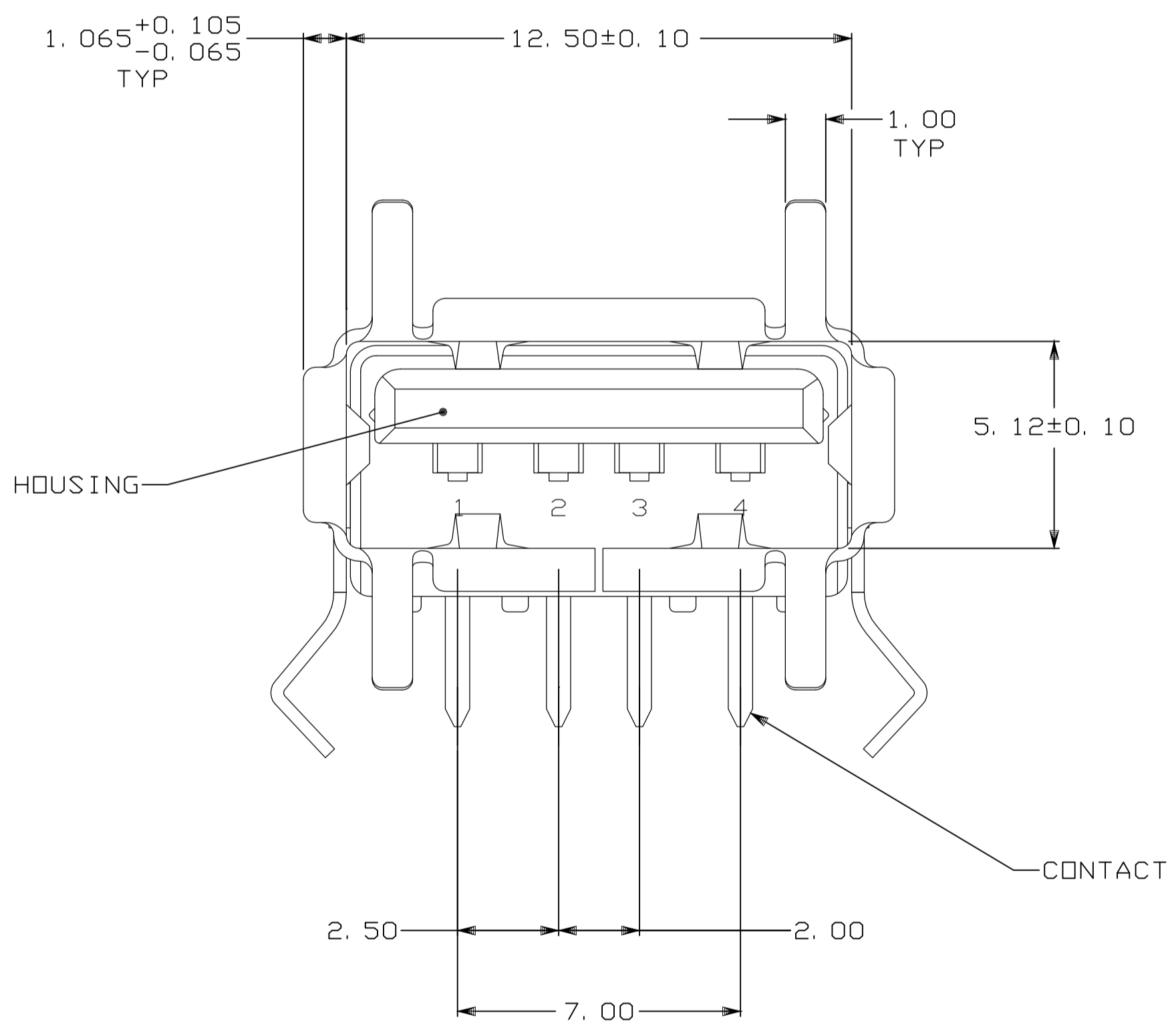


- △ MATERIAL:  
SHELL & CONTACTS- COPPER ALLOY.  
HOUSING- UL 94V-0 RATED, THERMOPLASTIC, BLACK.
- △ PLATING:  
CONTACTS- 0.076um MINIMUM GOLD OVER 0.76um MINIMUM PALLADIUM-NICKEL ON MATING AREA.  
3.8um MINIMUM MATTE TIN ON SOLDER TAILS.  
BOTH OVER 1.27um MINIMUM NICKEL.  
CONTACT ALTERNATE PLATING: 0.76um MIN GOLD ON MATING AREA, 3.80um MIN MATTE TIN ON SOLDER TAILS, BOTH OVER 1.27um MIN NICKEL.  
SHELL: 2~5um MINIMUM BRIGHT TIN OVER 1.0~3.0um NICKEL.
- △ DATUM AND BASIC DIMENSIONS ESTABLISHED BY CUSTOMER.
- △ RECOMMENDED PC BOARD THICKNESS OF 1.57.
- △ PLATING:  
CONTACT PLATING: 0.38um MIN GOLD ON MATING AREA, 3.80um MIN MATTE TIN ON SOLDER TAILS, BOTH OVER 1.27um MIN NICKEL.  
SHELL: 2~5um MINIMUM BRIGHT TIN OVER 1.0~3.0um NICKEL.
- △ OBSOLETE PARTS: OBSOLETE CIS STREAMLINING PER D.RENAUD/D.SINISI



△	YES	3.30	BLACK	5787761-8
△	YES	3.30	BLACK	5787761-7
△	YES	2.29	BLACK	5787761-6
△	NO	2.84	NATURAL	5787761-3
△	NO	2.29	BLACK	<del>5787761-2</del>
△	NO	2.84	BLACK	5787761-1
△	FINISH	HIGH TEMPERATURE COMPATIBLE	D	HOUSING COLOR PART NUMBER

THIS DRAWING IS A CONTROLLED DOCUMENT.

DIMENSIONS: mm	TOLERANCES UNLESS OTHERWISE SPECIFIED:	DRAWN: ROY HAO 18JUN04	CHK: STEVEN YAO 18JUN04	APVD: ILENOMOTO 18JUN04	NAME: RECEPTACLE ASSEMBLY, RIGHT ANGLE 4 POS, THRU-HOLE, USB
0 PLC ± -	1 PLC ± -	2 PLC ± 0.13	3 PLC ± -	4 PLC ± -	ANGLES ± -
MATERIAL: △	FINISH: △ △	SIZE: A1	CAGE CODE: 00779	DRAWING NO: C=5787761	RESTRICTED TO: -
CUSTOMER DRAWING		SCALE: 1:1	SHEET: 1 of 1	REV: C3	

STE TE Connectivity